

Notes:

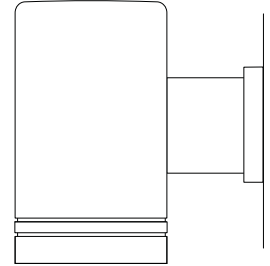
Job:

Type:

CYLINDERS

300 LINE EMERGENCY CYLINDER

GENERAL DESCRIPTION: The Gardco 300 LINE is a series of compact, high performance cylinder luminaires in a variety of styles. The Emergency style utilizes a 42w compact fluorescent lamp. Housings are die cast aluminum with twin architectural reveals located near the luminaire apertures. A choice of two (2) models, each with two (2) light control styles is available in a wall mounted configuration. Luminaires are finished with a fade and abrasion resistant polyester powder coat offered in five standard colors.



CUTOFF PERFORMANCE: 300 Line Emergency luminaires mounted in the normal downlight position provide full cutoff performance.

ORDERING

PREFIX	MODEL	MOUNTING	TRIMS	LAMP	VOLTAGE	FINISH	OPTIONS
<input type="text"/>	<input type="text"/>	<input type="text"/>	<input type="text"/>	<input type="text"/>	<input type="text"/>	<input type="text"/>	<input type="text"/>

Enter the order code into the appropriate box above. Note: Gardco reserves the right to refuse a configuration. Not all combinations and configurations are valid. Refer to notes below for exclusions and limitations. For questions or concerns, please consult the factory.

PREFIX	MODEL	MOUNTING	TRIMS
300EM Emergency Cylinder	D Enclosed Downlight	W Wall Mount	<i>Enclosed Downlight "D" only</i>
300EMR Remote Emergency Cylinder	O Open Downlight		L Solite Lens LL Solite Lens with Louver <i>Open Downlight "O" only</i> R Reflector <i>Luminaires cannot be field modified to change optics.</i>

LAMP	VOLTAGE	FINISH
32TRF	120	BRP Bronze Paint
42TRF	277	BLP Black Paint
		WP White Paint
		NP Natural Aluminum Paint
		BGP Beige Paint
		VP Verde Green Paint
		OC Optional Color Paint <i>Specify Optional Color or RAL ex: OC-LGP or OC-RAL7024.</i>
		SC Special Color Paint <i>Specify. Must supply color chip.</i>

Minimum ambient temperature for emergency battery pack is 32° F/ 0 °C.

OPTIONS

- PCB** Button Type Photocontrol *Contact factory for availability.*
- WS** Wall Mounted Box for Surface Conduit
- EMR Luminaires Only:**
- B84CG** Bodine Emergency Battery Pack
Emergency Battery Packs for EMR types MUST be ordered with luminaires and supplied by Gardco.

Gardco Lighting reserves the right to change materials or modify the design of its product without notification as part of the company's continuing product improvement program. Solite® is a Registered Trademark of AFG Industries

© Copyright Gardco Lighting 2001-2007. All Rights Reserved. International Copyright Secured.

A Genlyte Company

Gardco Lighting
1611 Clovis Barker Road
San Marcos, TX 78666

(800) 227-0758
(512) 753-1000
FAX: (512) 753-7855
www.sitelighting.com



CYLINDERS

300 LINE EMERGENCY CYLINDER

SPECIFICATIONS

HOUSING: Housings are die cast aluminum in a single-piece cylindrical form of corrosion resistant alloy, 1/8" min. wall thickness. Units are 7.5" in diameter and 12" in height, nominal measurements.

MOUNTING:

Wall Bracket (W): Cast aluminum canopy with integrated aluminum arm secured to housing with (2) 5/16" bolts. Requires mounting to a structural member of the building.

LIGHT CONTROL (Trim):

Lens (L): Lens units consist of a Solite® glass lens mounted to a die cast aluminum trim assembly. Type D (Enclosed Downlight) only.

Lens with Louver (LL): Lens with louver units consist of a Solite® glass lens mounted to a die cast aluminum trim assembly, including 1 5/8" x 1 5/8" square louvers with a nominal depth of 1". Type D (Enclosed Downlight) only.

Reflector (R): Reflectors are composed of spun components, electro-polished, anodized, sealed and feature a dual stage construction. Type O (Open Downlight) only.

ELECTRICAL: Standard fluorescent units have a starting temperature of 0°F/-18°C. Standard fluorescent ballasts are high power factor electronic solid state. Fluorescent sockets are high temperature (PBT) with brass contacts.

EM Luminaires: In the event of power interruption, integral battery pack will power (1) 42W or (1) 32W compact fluorescent lamp at reduced light levels for a minimum of 90 minutes. Maintenance free

battery is rated for ambient temperatures down to 32°F/0°C (EM). Indicator light is visible through the lens. A test switch is accessible through the door assembly. EM units do not bear CUL label.

EMR Luminaires: A 7.5"/2.29m, 12 wire, quick disconnect assembly is provided for wiring through conduit (by others) to a Bodine B84CG fluorescent emergency battery pack. The fluorescent emergency battery pack MUST be supplied by Gardco. The B84CG option is required to be on the order to the factory. In the event of power interruption, the remote battery pack (B84CG or B94C-CAN) will power (1) 42W or (1) 32W compact fluorescent lamp at reduced light levels; for a minimum of 90 minutes.

Maintenance free battery is rated for ambient temperatures down to 32°F/0°C. Minimum luminaire starting temperature is 0°F/-18°C. Indicator light is visible through the lens. A test switch is accessible through the door assembly. NOTE: B84CG does not bear CUL label.

FINISH: Each luminaire receives a fade and abrasion resistant, electrostatically applied, thermally cured, textured TGIC polyester powdercoat finish.

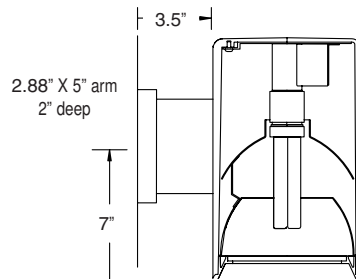
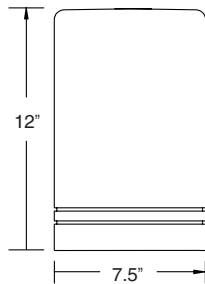
LABELS: All luminaires bear UL or CUL (where applicable) Wet Location labels, except as noted.

FULL CUTOFF PERFORMANCE: Full cutoff performance means a luminaire distribution where zero candela intensity occurs at an angle of 90° above nadir. Additionally, the candela per 1000 lamp lumens does not numerically exceed 100 (10 percent) at a vertical angle of 80° above nadir. This applies to all lateral angles around the luminaire.

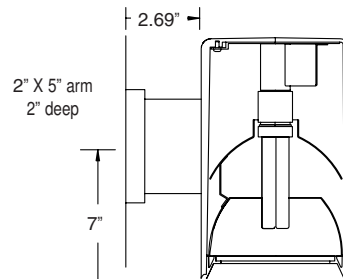
CUTOFF PERFORMANCE: Cutoff performance means a luminaire distribution where the candela per 1000 lamp lumens does not numerically exceed 25 (2.5 percent) at an angle at or above 90° above nadir, and 100 (10 percent) at a vertical angle of 80° above nadir. This applies to all lateral angles around the luminaire.

DIMENSIONS AND MOUNTING DETAIL

EM - Emergency Cylinder



EMR - Remote Emergency Cylinder



Gardco Lighting reserves the right to change materials or modify the design of its product without notification as part of the company's continuing product improvement program. Solite® is a Registered Trademark of AFG Industries

© Copyright Gardco Lighting 2001-2007. All Rights Reserved. International Copyright Secured.

A Genlyte Company

Gardco Lighting
1611 Clovis Barker Road
San Marcos, TX 78666

(800) 227-0758
(512) 753-1000
FAX: (512) 753-7855
www.sitelighting.com



79115-142/0907