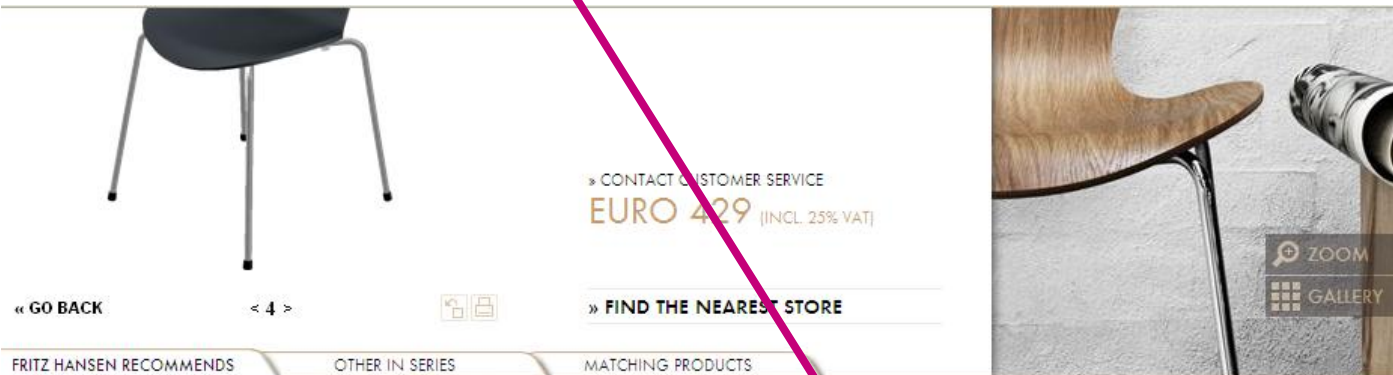


TOOLS FOR PROFESSIONALS

GUIDE FOR CONVERTING DWG TO REVIT/FAMILY



» CONTACT CUSTOMER SERVICE
EURO 429 (INCL. 25% VAT)

» FIND THE NEAREST STORE

« GO BACK < 4 >

FRITZ HANSEN RECOMMENDS OTHER IN SERIES MATCHING PRODUCTS

ZOOM GALLERY



SPECIFICATIONS

SERIES 7™

ARNE JACOBSEN 1955

The Series 7™ designed by Arne Jacobsen is by far the most sold chair in the history of Fritz Hansen and perhaps also in furniture history. The pressure moulded veneer chair is a further development of the classic Ant™ chair. The four-legged stackable chair can be seen as the culmination of the use of the lamination technique. A technique refined to perfection during the Twenties and Thirties by Søren C. Hansen, the grandson of the founder, Fritz Hansen. The visionary Arne Jacobsen exploited the possibilities of lamination to perfection resulting in the iconic shape of the chair. Series 7 represents the chair in the Fritz Hansen collection with the widest range of applications. It is lightweight and stackable and offers options such as armrests, castors etc. Choose from an extensive palette of colours and finishes, fabric or leather upholstery or wood qualities. Series 7 is available with a chrome or a satin chromed base in three different heights.



DOWNLOAD MATERIAL

» SEE ALL

» PRODUCT FACTS

» MAINTENANCE

TOOLS FOR PROFESSIONALS

» SEE ALL

» 3D MAX FILES

» 3DS FILES

» OBJ FILES

» 2D DWG FILES

» 3D DWG FILES

» LINE DRAWINGS (JPEG)



CONVERTING DWG TO REVIT/FAMILY

All 2D and 3D files, and image texture (png) retrieved from specific product pages, for example.

<http://www.fritzhanzen.com/en/egg-easy-chair-3316>

DWG TO REVIT

- Fritz Hansen does not create Revit Families for download, but it is possible to create a Revit family from our 3D DWG file
- Please note that the use of numerous DWG files in Revit can make a project heavy to work with. The ideal would be to create Revit Families from scratch for use in design
- It is recommended to create both a 2D and a 3D Family
- In terms of project size, 3D Families should be used exclusively in projects where the furniture needs to be displayed in 3D and Rendering Scenes
- We recommend using 2D Families for decorating plans, sections and elevations



2D FAMILY

- Download 2D DWG file to use as a underlay in Revit
- Expect to adapt the DWG file before it is ready to use in customer projects

IN REVIT - CREATE A NEW FURNITURE FAMILY

- New Family Search ➔ Metric Furniture.rft
- Save The Family
- Stand in Ref Level
- Insert Tab ➔ Import DWG to Revit
- Use Align to position the DWG file correctly in relation to the reference plans
- Draw up object with Symbolic Lines respectively. Ref Level, Left, Right, Front and Back
- Once all sides are drawn, delete DWG file and save The Family

3D FAMILY

- Download 3D DWG file
- Expect to adapt the DWG file before it is ready to use in customer projects

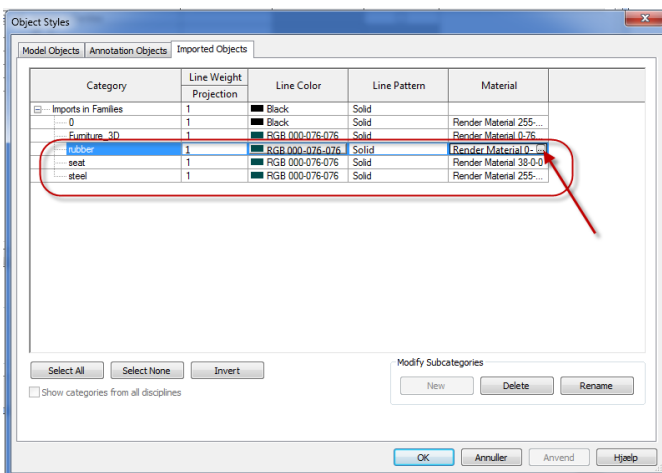
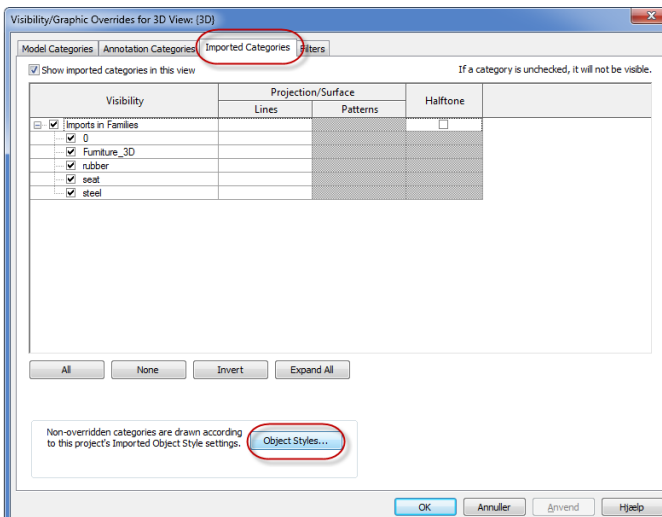
ADAPTION IN AUTOCAD:

- Open the drawing in AutoCAD
- Create layers for different objects
- Move objects to the appropriate layers and remember they must be **By layer**



IN REVIT

- New Family Search ➔ Metric Furniture.rft
- Save The Family
- Stand in Ref Level
- Import the custom drawing in Revit via the Insert Tab ➔ Import
- Use Align to place DWG model correctly in Ref Level, Front and Right
- In Visibility Graphic Overrides (VG) – Object Styles, each layer is assigned to a material:

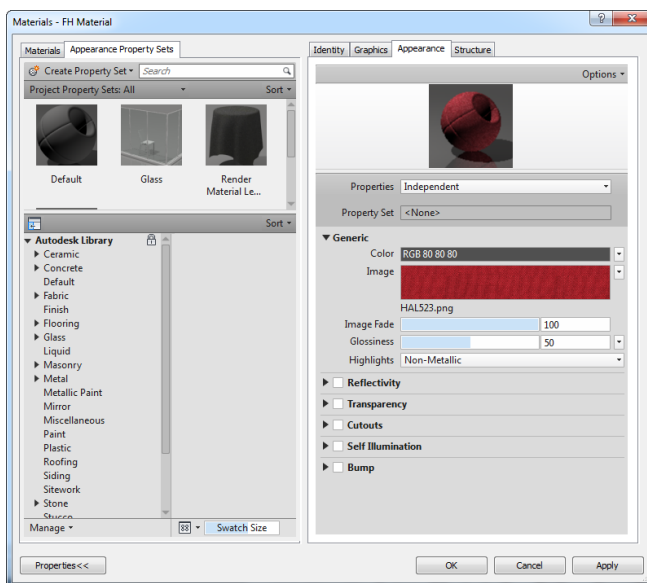
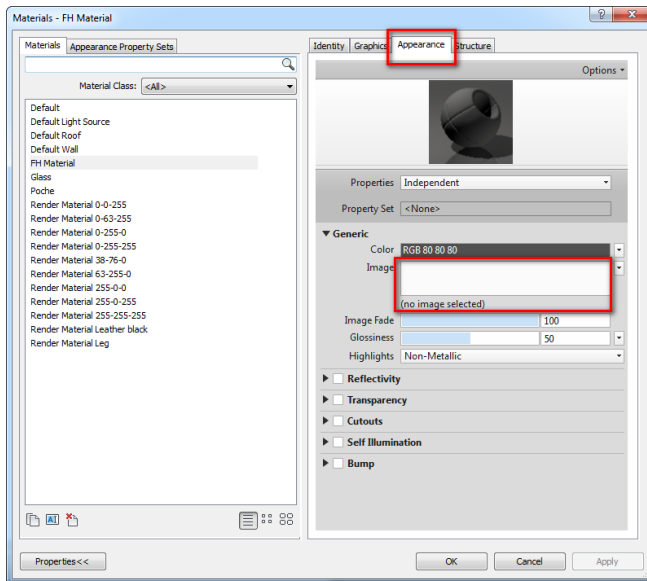


- Draw up the 2D object's appearance with Symbolic lines in Ref Level, Front, Back, Left, Right
- Save



CREATE FRITZ HANSEN MATERIAL IN REVIT

- Download texture file (png)
- Open the Material dialog box
- Create a new material
- In the Appearances tab, select Image



- Browse to the right image
- Click OK and Done

