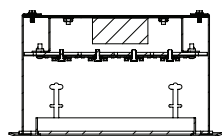
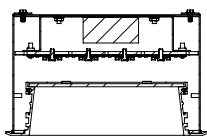


A	B	C	TRIM	S1
9.9	5.1	8.5	FT1010	11.0
9.9	5.1	8.5	RT1010	10.5



FT-Flush Trim/Lens



RT-Regressed Trim/Lens



Retrofit/Remodeler with Flush Trim

## 10" SQUARE LENSED

OA SERIES / 4400 LUMENS MAX LED

recessed  
fixtures



### SR10SQLEDOA

#### APPLICATION

10" square recessed LED downlight LED features soffit/area light for optimal performance.

#### FEATURES

Efficient, powerful LED light source, designed to exceed 50,000 hours of life (L70). Multi-Bar mounting brackets. Tamper-resistant option (TP). All LED modules and drivers are replaceable and up-gradeable. New and Retrofit/Remodeler options. Tamper Resistant and Wet location use screws fasteners. (4)

#### FINISH

A variety of architectural powdercoat and anodized finishes are available. Matte White self-flange is standard.

#### ELECTRONICS

LED module features high brightness white Nichia LEDs. 3-step MacAdam Ellipses binning and CRI 84 minimum. Variety of electronic 120v/277v and dimming drivers.

#### CONSTRUCTION

Housing constructed of .050 5052-H32 aluminum. Trim fabricated from aluminum extrusion and finished to specification.

#### CODE COMPLIANCE

ARRA Compliant. Non-IC rated. ETL listed for damp locations. Optional Wet location. Manufactured and tested to UL standards No. 1598/8750.

#### WATTAGE TO LUMENS UPDATE

CURRENT PART NUMBER EXAMPLE	PREVIOUS PART NUMBER EXAMPLE	SOURCE LUMENS <sup>1</sup>	SYSTEM WATTS
SR10SQLEDOA10L	SR10SQLEDOA12W	1100	12W
SR10SQLEDOA20L	SR10SQLEDOA22W	2200	22W
SR10SQLEDOA30L	SR10SQLEDOA33W	3300	33W
SR10SQLEDOA40L	SR10SQLEDOA42W	4400	42W

#### RECESSED HOUSING SPECIFICATION

SERIES	LUMENS <sup>1</sup>	CCT	DRIVER / VOLTAGE <sup>2</sup>	OPTIONS <sup>3</sup>
SR10SQLEDOA	10L 1000 Lm 20L 2000 Lm 30L 3000 Lm 40L 4000 Lm	27K 2700° K 30K 3000° K 35K 3500° K 40K 4000° K 50K 5000° K	E_ Electronic Driver DS10_ 10% 0-10V Dimming	1 120v 2 277v BH27 <sup>4</sup> 27" Mounting Bars BH6 Expandable Bar Hangers, 6" - 12" BH12 Expandable Bar Hangers, 12" - 24" CB24 C-Channel Bars FS Fuse Holder and Fuse EM Emergency Battery Pack CR Corrosion Resistant RM Remodeler Housing

#### TRIM SPECIFICATION

TRIM	FINISH <sup>5</sup>	OPTIONS
FLUSH TRIM	FINISH	LENS
FT1010 Flush Extruded Aluminum Door	MW <sup>5</sup> Matte White GW Gloss White MB Matte Black GB Gloss Black	FO <sup>7</sup> Matte White Acrylic Lens 90% Efficient SO Solite Lens WL <sup>8</sup> Wet Location
REGRESSED TRIM	BZ Bronze PT Platinum CC Custom Color	
RT1010 Regressed Extruded Aluminum Door		

EXAMPLE: SR10SQLEDOA20L30KE1/BH27/FT1010GW/FO

#### NOTES:

1 Nominal Source Lumens 2 Contact Factory for Additional Options 3 See Product Options Page for Details 4 Standard Bar Hangers 5 Contact Factory for Special Finishes 6 Standard Finish 7 Standard Lens 8 Trim Secured with 4 Screws

Dimensions shown are nominal. Spectrum Lighting is continually improving products and reserves the right to make changes that will not alter performance or appearance with or without written notice.



PROJECT:

TYPE:

CAT. NO.:

WWW.SPECLIGHT.COM • 994 JEFFERSON STREET, FALL RIVER, MA 02721 • 508.678.2303 FAX 508.678.2260

OSRAM  
LED Technology included

