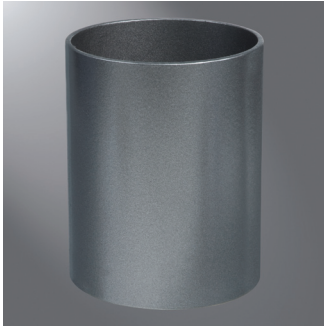


Aluminum Poles



RTA ROUND TAPERED ALUMINUM WITH ELLIPTICAL ARMS

Catalog #		Type
Project		
Comments		Date
Prepared by		

FEATURES

- Cast aluminum alloy base with aluminum bolt covers
- Flush, internally reinforced hand hole assembly
- 10'-45' mounting heights
- Drilled or tenon (specify)

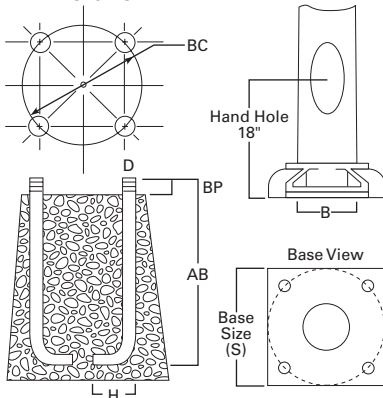
ORDERING INFORMATION

SAMPLE NUMBER: RTA6L20AAS24V

Product Family	Shaft Size (Inches) ¹	Wall Thickness (Inches)	Mounting Height (Feet)	Base Type	Finish	Mounting Type	Number and Location of Arms	Arm Lengths (Feet)	Options (Add as Suffix)
RTA=Round Tapered Aluminum (With Round Elliptical Arms)	6=6" 7=7" 8=8" 0=10"	T=0.125" L=0.156" M=0.188" X=0.250"	10=10' 12=12' 15=15' 18=18' 20=20' 25=25' 30=30' 35=35' 40=40' 45=45'	A=Aluminum (4-Bolt) ²	A=Satin Brushed Aluminum B=Clear Anodized C=Dark Bronze Anodized D=Black Anodized E=Medium Bronze Anodized F=Dark Bronze J=Summit White K=Carbon Bronze L=Dark Platinum P=Primer Powder Coat R=Hartford Green S=Silver T=Graphite Metallic V=Grey W=White X=Custom Color Y=Black	S=Standard Upsweep Arm	1=Single 2=2 at 180° 3=Triple ³ 4=4 at 90°	4=4' 6=6' 8=8'	A=1/2" Tapped Hub (Specify location desired) B=3/4" Tapped Hub (Specify location desired) C=Convenience Outlet ⁴ D=Base Cover for "A" Base E=GFCI Convenience Outlet ⁴ F=Vibration Pad G=Ground Lug H=Additional Hand Hole ⁵ V=Vibration Dampener

NOTES: 1. All shaft sizes nominal. 2. Base cover not included (order as option). 3. Square poles are 3 at 90°, round poles are 3 at 120°. 4. Outlet is located 4' above base and on same side of pole as hand hole, unless specified otherwise. Receptacle not included, provision only. 5. Additional hand hole is located 12" below pole top and 90° from standard hand hole location, unless otherwise specified.

DIMENSIONS

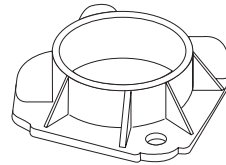


STANDARD BASE

(Round aluminum poles only.)

TYPE "A"

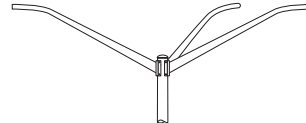
6", 7", 8" or 10"



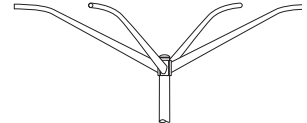
ARMS

(Configurations available on request. Consult factory.)

3 at 120°



4 at 90°



WARNING: Customer is responsible for engineering analysis to confirm pole and fixture compatibility for all applications. Refer to pole white paper WP513001EN for additional support information. Before installing, make sure proper anchor bolts and templates are obtained. The use of unauthorized accessories such as banners, signs, cameras or pennants for which the pole was not designed voids the pole warranty and may result in pole failure causing serious injury or property damage. Information regarding total loading capacity can be supplied upon request. The pole warranty is void unless poles are used and installed as a complete pole and luminaire combination. This warranty specifically excludes failure as the result of a third party act or omission, misuse, unanticipated uses, fatigue failure or similar phenomena resulting from induced vibration, harmonic oscillation or resonance associated with movement of air currents around the product.

Specifications and dimensions subject to change without notice. Consult your lighting representative at Eaton or visit www.eaton.com/lighting for available options, accessories and ordering information.

Effective Projected Area

Mounting Height (Feet)	Catalog Number ^{1,2}	Wall Thickness (Inches)	Bolt Circle Diameter (Inches)	Anchor Bolt Projection ³ (Inches)	Shaft Taper ³ (Inches)	Anchor Bolt Diameter x Length x Hook (Inches)	Net Weight (Pounds)	Maximum Effective Projected Area (Square Feet) ⁴				Max. Fixture Load - Includes Bracket (Pounds)	Arm Length (Feet)
MH			BC	BP	B	D x AB x H		70 mph	80 mph	90 mph	100 mph		
20	RTA6L20AAS14	0.156	9-3/8	3-1/2	6 x 4	3/4 x 17 x 3	94	8.9	6.7	5.2	4.1	75	4
20	RTA6L20AAS18	0.156	9-3/8	3-1/2	6 x 4	3/4 x 17 x 3	100	4.5	3.2	2.3	1.7	75	8
20	RTA6L20AAS24	0.156	9-3/8	3-1/2	6 x 4	3/4 x 17 x 3	97	5.9	3.9	2.6	1.7	150	4
20	RTA7L20AAS26	0.156	10-1/2	4-1/8	7 x 4	1 x 36 x 4	150	6.3	4.7	3.5	2.7	150	6
25	RTA6L25AAS14	0.156	9-3/8	3-1/2	6 x 4	3/4 x 17 x 3	117	7.8	4.9	3.1	2.0	75	4
25	RTA7L25AAS16	0.156	10-1/2	4-1/8	7 x 4	1 x 36 x 4	152	6.3	4.7	3.5	2.7	75	6
25	RTA7L25AAS18	0.156	10-1/2	4-1/8	7 x 4	1 x 36 x 4	154	4.5	3.2	2.3	1.7	75	8
25	RTA8L25AAS24	0.156	11-1/2	4-1/8	8 x 4-1/2	1 x 36 x 4	171	8.7	6.1	4.3	3.1	150	4
25	RTA7L25AAS26	0.156	10-1/2	4-1/8	7 x 4	1 x 36 x 4	170	5.3	3.2	1.9	1.1	150	6
30	RTA7L30AAS14	0.156	10-1/2	4-1/8	7 x 4	1 x 36 x 4	169	8.0	5.0	3.1	2.0	75	4
30	RTA8L30AAS16	0.156	11-1/2	4-1/8	8 x 4-1/2	1 x 36 x 4	182	6.3	4.7	3.5	2.7	75	6
30	RTA8L30AAS18	0.156	11-1/2	4-1/8	8 x 4-1/2	1 x 36 x 4	184	4.5	3.2	2.3	1.7	75	8
30	RTA8M30AAS24	0.188	11-1/2	4-1/8	8 x 4-1/2	1 x 36 x 4	215	7.5	5.0	3.5	2.4	150	4
30	RTA8L30AAS26	0.156	11-1/2	4-1/8	8 x 4-1/2	1 x 36 x 4	194	5.1	3.1	1.8	1.0	150	6
40	RTA0L40AAS16	0.156	14-1/2	4-3/4	10 x 6	1 x 36 x 4	282	6.3	4.7	3.5	2.7	75	6
40	RTA0X40AAS28	0.250	14-1/2	5-1/4	10 x 6	1-1/4 x 42 x 6	420	4.5	3.2	2.3	1.7	150	8

NOTES:

1. Catalog number includes pole with hardware kit. Anchor bolts not included. Before installing, make sure proper anchor bolts and templates are obtained.

2. Tenon size or machining for rectangular arms must be specified. Hand hole position relative to drill location.

3. Shaft size, anchor bolts and projections may vary slightly. All dimensions nominal.

4. EPAs based on shaft properties with wind normal to flat. EPAs calculated using base wind velocity as indicated plus 30% gust factor.