

# INSTALLATION INSTRUCTIONS

PRODUCT: SC DUSK TO DAWN  
AREA LUMINAIRE

IMI-177

**IMPORTANT: READ CAREFULLY BEFORE INSTALLING FIXTURE. RETAIN FOR FUTURE REFERENCE.**

**GENERAL:** UPON RECEIPT OF FIXTURE THOROUGHLY INSPECT FOR ANY FREIGHT DAMAGE, WHICH SHOULD BE BROUGHT TO THE ATTENTION OF THE DELIVERING CARRIER. COMPARE THE CATALOG DESCRIPTION LISTED ON THE PACKING SLIP WITH THE FIXTURE LABEL ON THE HOUSING TO ASSURE YOU HAVE RECEIVED THE CORRECT MERCHANDISE.

**SAFETY:** THIS FIXTURE IS INTENDED TO BE INSTALLED IN ACCORDANCE WITH ARTICLE 320 OF THE NATIONAL ELECTRICAL CODE; ANSI/NFPA 70, AND APPLICABLE LOCAL CODES AND ORDINANCES. PROPER GROUNDING IS REQUIRED TO INSURE PERSONAL SAFETY. CAREFULLY OBSERVE GROUNDING PROCEDURE UNDER INSTALLATION SECTION. ALL WORK SHOULD BE DONE BY A QUALIFIED ELECTRICIAN.

**WARNING:** Make certain power is OFF before starting installation or attempting any maintenance.

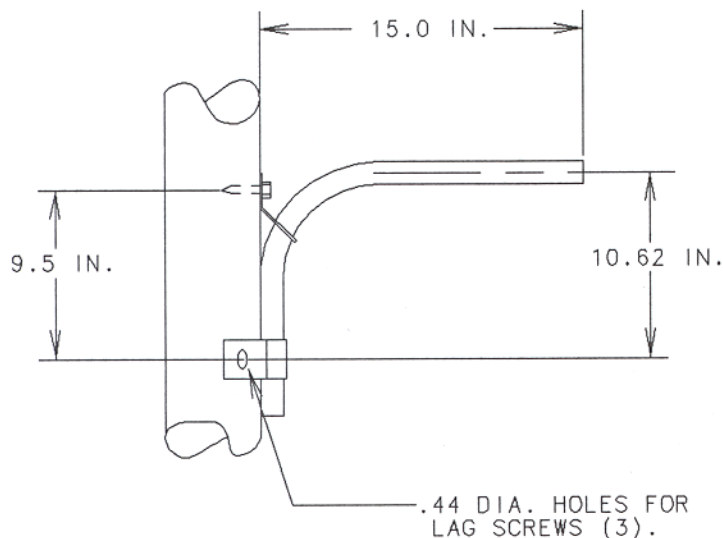


FIGURE 1

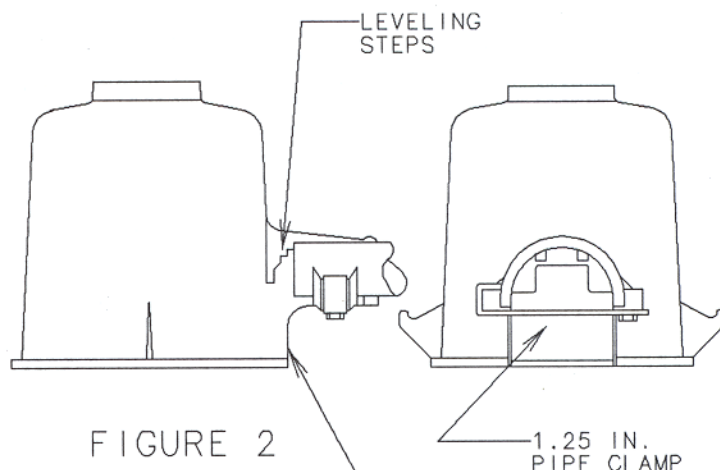


FIGURE 2

FIGURE 3

NOTE:

ENSURE THAT WIREWAY COVER IS PROPERLY INSTALLED AFTER CONNECTING TO LINE AND THAT WIRES ARE NOT TRAPPED BY COVER.

## (1) INSTALLATION OF PIPE BRACKET (SEE FIGURE 1)

ESTABLISH HEIGHT AND LOCATION FOR PIPE BRACKET AND LUMINAIRE. DRILL 7/16 (.44) DIAMETER HOLE 3" DEEP IN THE POLE. DRIVE ONE OF THE LAG SCREWS INTO THE HOLE, WITH THE WASHER IN PLACE ON THE SCREW. SLIDE SLOTTED PORTION OF THE UPPER BRACKET BEHIND THE WASHER, TIGHTEN LAG SCREW TO DRAW BRACKET AGAINST POLE. DRIVE LAG SCREWS THROUGH THE TWO HOLES IN THE LOWER BRACKET. TIGHTEN LAG SCREWS WITH WRENCH.

A GROUND SCREW IS INCLUDED WITH THE PIPE BRACKET. TO INSTALL, SCREW GROUND SCREW INTO HOLE IN THE UPPER BRACKET. ATTACH GROUND WIRE AROUND SCREW, AND TIGHTEN WITH WRENCH.

## (2) INSTALLATION OF HEAD ASSEMBLY (SEE FIGURE 2 & 3)

TO INSTALL, SIMPLY LOOSEN CLAMP BRACKET, SLIDE ON PIPE BRACKET, LEVEL HEAD ASSEMBLY BY PLACING PIPE ON DESIRED LEVELING STEP AND TIGHTEN PIPE CLAMP BRACKET SCREW FIRMLY. INSERT WIRES THROUGH PIPE BRACKET, FORM DRIP LOOP, CONNECT POWER SUPPLY TO LUMINAIRE LEAD WIRES. VOLTAGE RATING OF POWER SUPPLY AND LUMINAIRE MUST MATCH.

## (3) SNAP REFLECTOR TO THE LUGS ON SIDE OF HEAD CASTING. **FOR REFERENCE ONLY**

## (4) SCREW LAMP INTO SOCKET.

MAKE SURE LAMP IS SCREWED IN FIRMLY TO MAKE CONTACT WITH CENTER CONTACT.



LUMARK

THESE INSTRUCTIONS DO NOT CLAIM TO COVER ALL DETAILS OR VARIATIONS IN THE EQUIPMENT, PROCEDURE, OR PROCESS DESCRIBED, NOR TO PROVIDE DIRECTIONS FOR MEETING EVERY POSSIBLE CONTINGENCY DURING INSTALLATION, OPERATION OR MAINTENANCE. WHEN ADDITIONAL INFORMATION IS DESIRED TO SATISFY A PROBLEM NOT COVERED SUFFICIENTLY FOR USER'S PURPOSE, PLEASE CONTACT YOUR NEAREST REPRESENTATIVE.

(5) PHOTOCONTROL RECEPTACLE ORIENTATION

LOOSEN TWO FLAT HEAD SCREWS SUFFICIENTLY TO ALLOW ROTATION OF RECEPTACLE TO NORTH DIRECTION. INSERT SCREW DRIVER INTO CENTER SLOT TO ROTATE RECEPTACLE. HOLD RECEPTACLE IN POSITION AND RETIGHTEN SCREWS FIRMLY. INSERT PHOTO-ELECTRIC CONTROL AND TWIST TO A LOCKED POSITION. THE PHOTOCONTROL MUST CONTAIN A SOFT RESILIENT GASKET FASTENED TO THE BOTTOM SURFACE TO ASSURE A PROPER WEATHER SEAL BETWEEN THE CONTROL AND RECEPTACLE.

NOTE: THIS ORIENTATION PROCEDURE IS ONLY REQUIRED FOR PHOTOCONTROLS WHICH SPECIFICALLY REQUIRE THAT THE CELL BE AIMED "NORTH", OTHERWISE RANDOM FACTORY ORIENTATION MAY SUFFICE. FOLLOW THE DIRECTIONS RECOMMENDED BY THE SUPPLIER OF THE PHOTOCONTROL PROXIMITY TO LIGHT-COLORED BUILDING SURFACES, LIGHTED SIGNS OR FLOODLIGHTS, TREE BRANCHES, ETC. MAY AFFECT FINAL POSITION OF THE PHOTOCONTROL.

**FOR REFERENCE  
ONLY** *S. W.*