

Installation Instructions

3500MS Handrail

Please read all instructions before

installing handrail.

Note: Install product in environmentally controlled conditions. Acclimate the product to room temperature 24 hours before installation.

FIG. 1

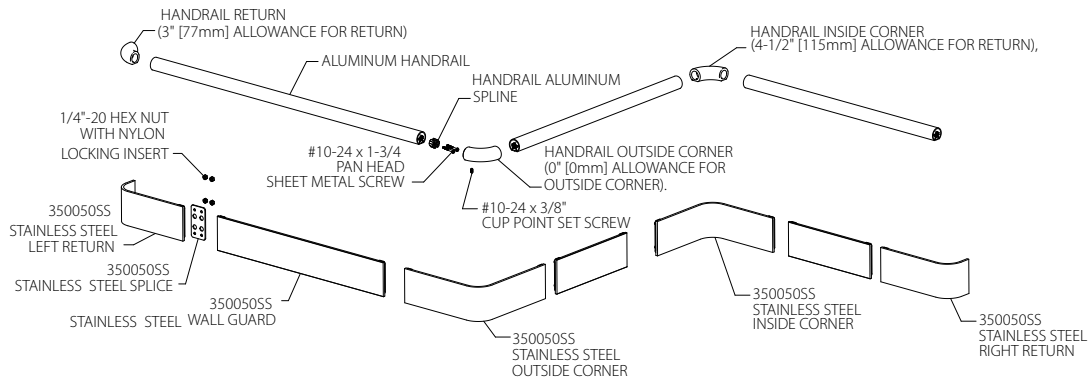
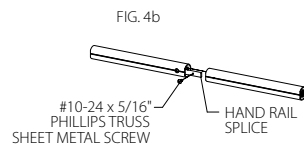
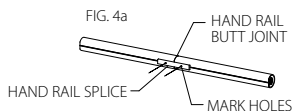
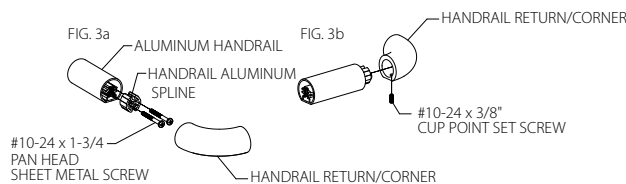
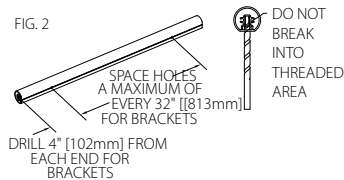


FIG. 2



1. Cut the aluminum handrail to the desired lengths leaving allowances for returns, outside corners and inside corners. Break sharp edges with fine Emory cloth. See **Figure 1**.

Handrail Allowances:

Return – 3" [77mm]

Inside corner – 4-1/2" [115mm]

Outside corner – 0" [0mm]

Wall Guard Allowances: Stainless steel wall guards are manufactured to customer supplied measurements.

2. Bracket Spacing: Use brackets 4" [102mm] from each end and spaced a maximum of 32" [813mm]. Drill 1/4" holes on the bottom of the handrail aluminum for brackets. Be careful to drill only through the outer wall of the handrail aluminum. See **Figure 2**.

3. To attach returns and corners:

a. Attach splines to handrail using two #10 x 1-3/4" sheet metal screws per spline. See **Figure 3a**.

b. Attach returns and corners to handrail by sliding component over the spline and secure with setscrews. See **Figure 3b**.

4. For lengths longer than 12' [3.7M] use a splice to join sections. Butt the two sections together, using a splice as a template, mark the hole locations. See **Figure 4a**. Drill 1/4" holes on the bottom of the handrail aluminum for the splice. Connect the two pieces using the splice and two #10-24 x 5/16" Phillips truss head screws. (Note: splice must be positioned inside handrail). See **Figure 4b**.

IPC.644/REV.4

Installation Hotline • 866.EZINPRO

Inprocorp.com • 800.222.5556 • 262.679.9010

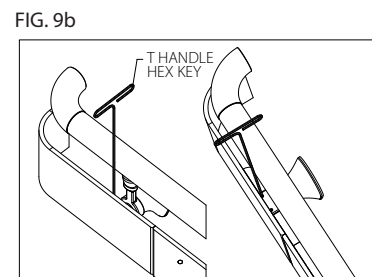
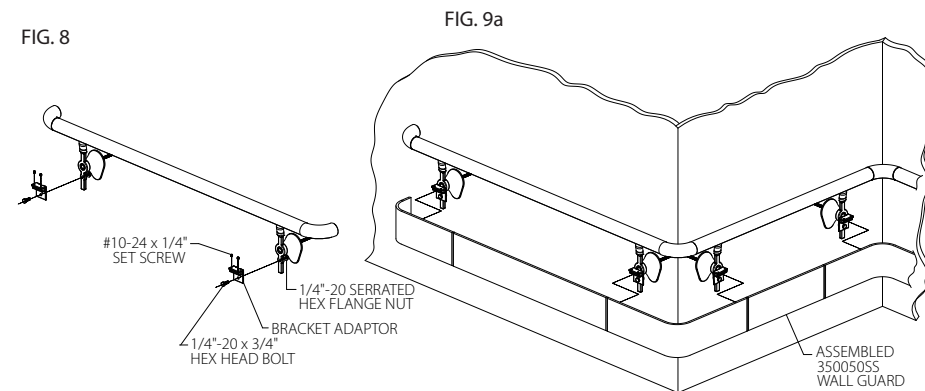
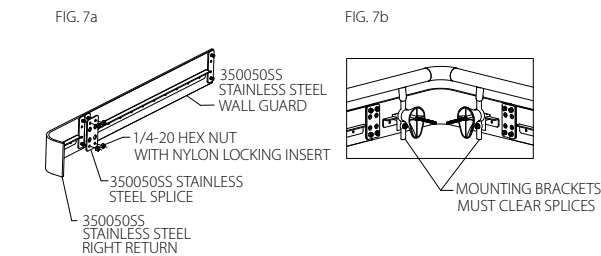
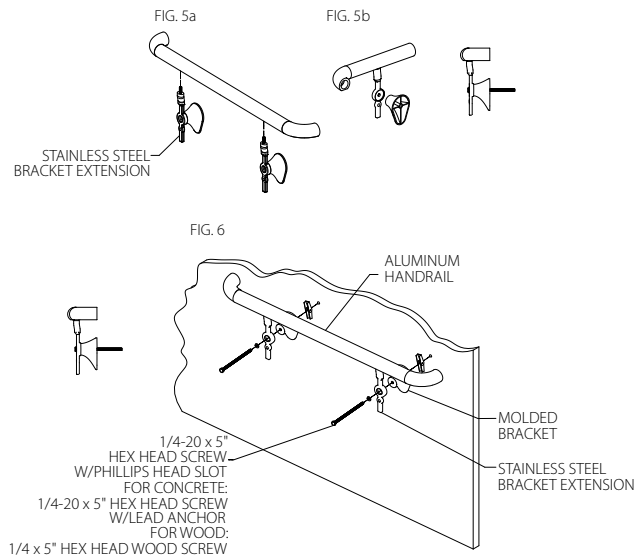
World Headquarters S80 W18766 Apollo Drive, Muskego, WI 53150 USA

IPC®

DOOR + WALL PROTECTION SYSTEMS
A DIVISION OF INPRO®

Installation Instructions

3500MS Handrail



5. Screw bracket extensions into the handrail holes on the bottom of the rail. Tighten and turn bracket extensions until aligned. See **Figure 5a**. Orientation of bracket extension is critical. See **Figure 5b**.

6. Snap a chalk line on the wall 4-7/16" [113mm] below the top of the handrail. Drill 3/4" holes for toggle bolts (drywall/metal stud installation), 1/2" [13mm] holes for lead anchor (concrete wall installation) or 1/8" pilot hole (wood screw into wood studs). Attach the molded bracket and stainless steel bracket extension/handrail assembly to the wall.

7. Attach the returns and corners to the straight lengths using splices. Align mating pieces and fit splice plate over 4 studs. Fasten 1/4 hex nut with nylon locking insert, using a 7/16 wrench or socket set. See **Figure 7a**. When determining handrail bracket extension locations, brackets must be clear of splice location. See **Figure 7b**.

8. Attach bracket adapters to the stainless steel bracket extensions, 1/4-20 x 3/4" hex head bolt and serrated hex flange nut. Level the adapters. See **Figure 8**.

9. Lift the wall guard assembly into position on the bracket adapters. See **Figure 9a**. Secure using two set screws in each adapter. See **Figure 9b**.

Installation Hotline • 866.EZINPRO

Inprocorp.com • 800.222.5556 • 262.679.9010

World Headquarters S80 W18766 Apollo Drive, Muskego, WI 53150 USA

IPC®
DOOR + WALL PROTECTION SYSTEMS
A DIVISION OF INPRO®