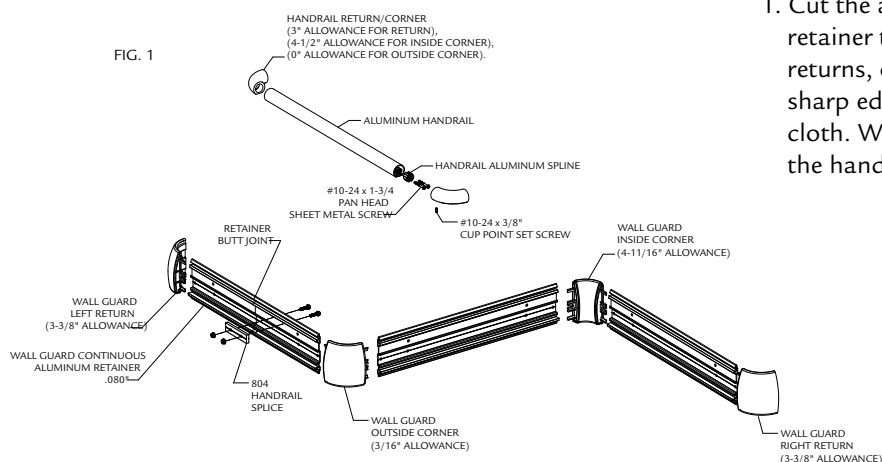


# Installation Instructions

## 3500MV/G2-3500MV Handrail

Please read all instructions before installing handrail.

**Note:** Install product in environmentally controlled conditions. Acclimate the product to room temperature 24 hours before installation.



1. Cut the aluminum handrail top and aluminum retainer to the desired lengths leaving allowances for returns, outside corners and inside corners. Break sharp edges on aluminum handrail with fine emery cloth. Wall guard aluminum will be 3/8" shorter than the handrail top. See Figure 1.

Handrail Allowances:

Return – 3"

Inside corner – 4-1/2"

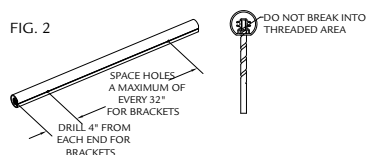
Outside corner – 0"

Wall Guard Allowances:

Return – 3-3/8"

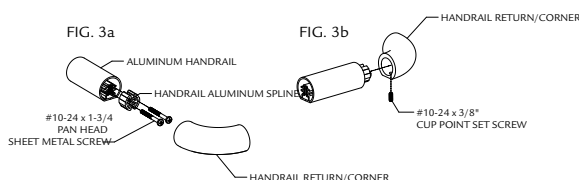
Inside Corners – 4-11/16"

Outside Corners – 3/16"

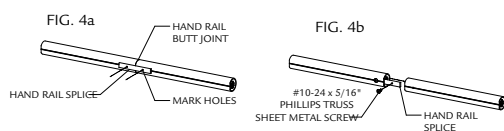


2. Drill 1/4" holes on the bottom of the handrail aluminum for brackets. Be careful to drill only through the outer wall of the handrail aluminum.

Bracket Spacing: Use brackets 4" from each end and spaced a maximum of 32" apart. See Figure 2.



3. To attach returns and corners:
  - a. Attach splines to handrail using two #10 x 1-3/4" sheet metal screws per spline. See Figure 3a.
  - b. Attach returns and corners to handrail by sliding component over the spline and tightening with set screws. See Figure 3b.



4. For lengths longer than 12', use a splice to join sections. Butt the two sections together, using a splice as a template, mark the hole locations. Drill 1/4" holes on the bottom of the handrail aluminum for the splice. See Figure 4a.

Connect the two pieces using the splice and two #10-24 x 5/16" Phillips truss head screws. (Note: splice must be positioned inside handrail). See Figure 4b.



IPC.639/REV.4

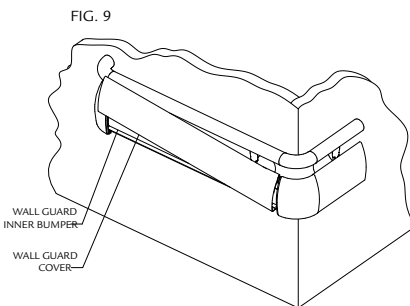
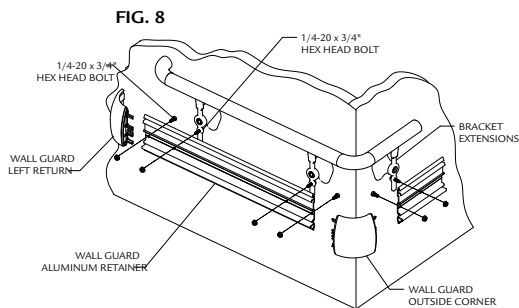
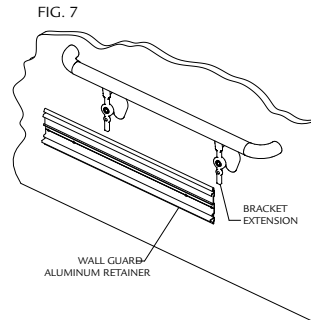
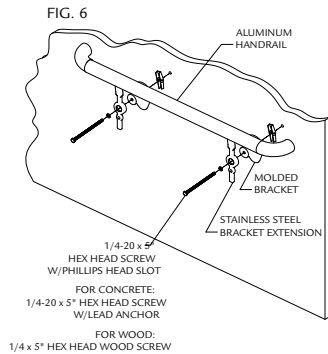
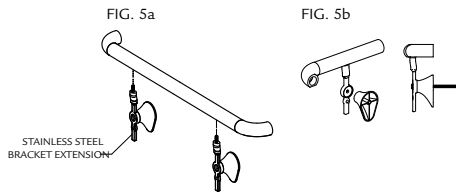
### Installation Questions?

Contact our Installation Hotline 866.EZINPRO  
For Sales & Customer Service call 800.222.5556

**INPRO**  
**IPC** Interior Protection Products  
and Decorative Surfaces

# Installation Instructions

## 3500MV/G2-3500MV Handrail



5. Screw bracket extensions into the handrail holes. Tighten and turn bracket extensions until aligned. See Figure 5a. Orientation of bracket extension is critical. See Figure 5b.

6. Snap a chalk line on the wall 4-7/16" below the top of the handrail. Drill 3/4" holes for toggle bolts (drywall/metal stud installation), 1/2" holes for lead anchor (concrete wall installation) or 1/8" pilot hole (wood screw into wood studs). Attach the molded bracket and stainless steel bracket extension/handrail assembly to the wall. See Figure 6.

7. Transfer the wall guard mounting hole from the bracket extensions to the aluminum retainer. The wall guard aluminum is 3/8" shorter than the handrail. Center the wall guard aluminum between the ends of the handrail. With lengths longer than 12', use a splice and bolts to join sections. Drill 5/16" holes at these marks on the v-groove of the retainer. In addition, drill holes 3/8" from the ends of the aluminum retainer to attach returns and corners. See Figure 7.

8. Attach the aluminum retainer to the bracket extensions. Attach wall guard returns and corners to the aluminum retainer. See Figure 8.

9. Cut the wall guard inner bumper to the length between the wall guard returns and corners. Position and snap the inner bumper in place. Cut the wall guard covers to the lengths between returns and/or corners. (Note: Trim factory edges square before installation). Position cover on retainer starting at one end and work to the other end by snapping the cover over the retainer. See Figure 9.



### Installation Questions?

Contact our Installation Hotline 866.EZINPRO  
For Sales & Customer Service call 800.222.5556

**INPRO CORPORATION**  
Interior and Exterior Architectural Products