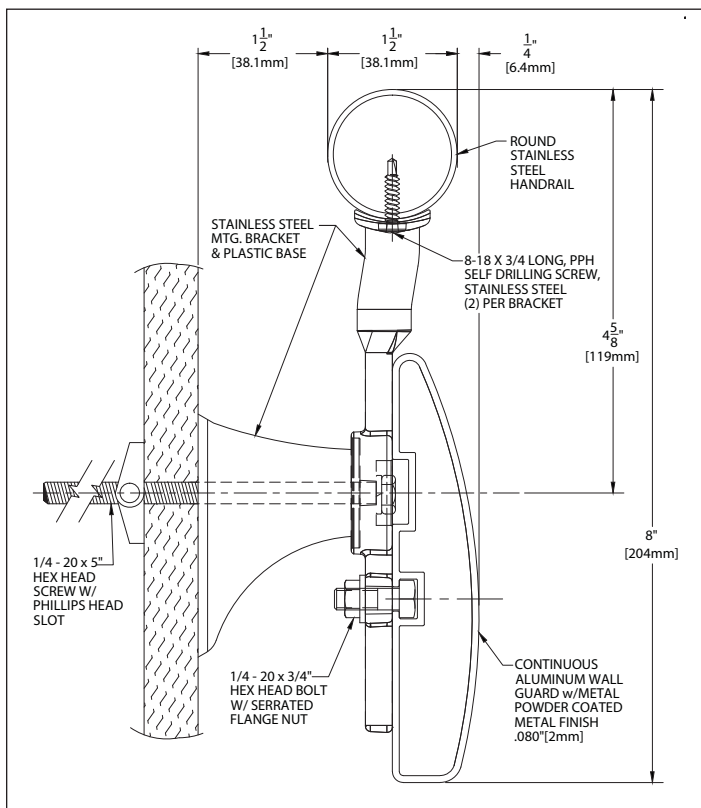


3500SRM

Silhouette Handrail, Round Stainless Steel Top, Aluminum Wall Guard Bottom



- 8" (204 mm) height x 1-½" (38mm) gripping diameter, system extends 3-¼" (83mm) from the wall
- System includes 1-½" (38mm) diameter stainless steel top handrail and an integrated 5" (127mm) aluminum wall guard.
- Type 304 Stainless Steel Handrail
- Aesthetically pleasing brushed finish
- Durable
- Pre-configured for fast and easy installation
- 1.5" diameter meets ADA requirements
- Non-porous surface does not promote the growth of mold and mildew

IPC.1639/REV.1

3500SRM Silhouette Handrail, Round Stainless Steel Top, Aluminum Wall Guard Bottom

Suggested Specifications

PART 1 GENERAL

1.01 SUMMARY

- A. Handrail systems for pedestrian safety and wall protection

1.02 SECTIONS INCLUDES

- A. 3500SRM Silhouette Handrail System, round stainless steel handrail with integrated aluminum wall guard

1.03 REFERENCES

- A. American National Standards Institute (ANSI)
B. American Society for Testing and Materials (ASTM)
C. American with Disabilities Act (ADA)

1.04 SYSTEM DESCRIPTION

- A. Performance Requirements: Provide metal handrail systems with integrated wall guard that conform to the following requirements of regulatory agencies and the quality control of IPC Door and Wall Protection Systems, InPro Corporation.
1. Fire Performance Characteristics: Provide Powder coated components conforming with NFPA Class A fire rating. Surface burning characteristics, as determined by ASTM E-84, shall be flame spread of 0 and smoke development of 5.
2. Fungal and Bacterial Resistance: Provide powder coated metal components that does not support fungal or bacterial growth as tested in accordance with ASTM G-21 and ASTM G-22.
3. Chemical and Stain Resistance: Provide powder coat materials that show resistance to stain when tested in accordance with applicable provisions of ASTM D-543.
4. Code Compliance: Provide handrails that comply with all current ANSI and ADA requirements.

1.05 SUBMITTALS

- A. Product Data: Manufacturer's printed product data for each product indicated in this section.
- B. Detail Drawings: Mounting details with appropriate fasteners for specific project substrates.
- C. Samples: Verification samples of handrail, 7" (178mm) long, in full size profiles with mounting brackets of each type indicated.
- D. Manufacturer's Installation Instructions: Printed installation instructions for each handrail.

1.06 DELIVERY, STORAGE AND HANDLING

- A. Deliver materials in unopened factory packaging to the jobsite.
- B. Inspect materials at delivery to assure that specified products have been received.
- C. Store in original packaging in a climate controlled environment away from direct sunlight.

1.07 WARRANTY

- A. Standard IPC limited lifetime warranty against material and manufacturing defects.

PART 2 PRODUCTS

2.01 MANUFACTURERS

- A. Acceptable Manufacturer: IPC Door and Wall Protection Systems
InPro Corporation, PO Box 406, Muskego, WI 53150 USA;
Telephone 800-543-1729, Fax: 888-715-8407,
Internet address: www.inprocorp.com
B. Substitutions: Not permitted
C. Provide all handrails and wall protection from a single manufacturer.

2.02 MANUFACTURED UNITS

- A. Stainless Steel/Aluminum Handrail System
1. 3500SRM Silhouette Handrail, 7-7/8" (200mm) height x 1-1/2" (38mm) gripping diameter, system extends 3-1/4" (83mm) from the wall. System includes 1-1/2" (38mm) diameter stainless steel top handrail and an integrated 5" (127mm) aluminum wall guard.

2.03 MATERIALS

- A. Stainless Steel:
1. Continuous stainless steel rail shall be type 304 alloy with a number 4 satin finish (type 304 meets NSF Standard 51).
2. Stainless steel brackets, returns and corners shall be type 304, stainless steel (type 304 meets NSF Standard 51).
- B. Aluminum:
1. Continuous aluminum wall guard of .080" (2mm) thickness shall be fabricated from 6063-T5 aluminum.
2. Cast wall guard returns and corners shall be fabricated from aluminum.
- C. Vinyl:
1. Molded components shall be made of polyvinyl chloride.

2.04 COMPONENTS

- A. Handrail returns and corners shall be type 304, stainless steel and a finish/color to match handrails.
- B. Wall guard returns and outside corners shall be fabricated of aluminum in a finish/color to match the wall guard.
- C. Stainless steel brackets shall be type 304, stainless steel with a brushed finish or a powder coat finish.
- D. Molded bracket components shall be fabricated from injection molded polyvinyl chloride.
- E. Fasteners: All mounting systems accessories appropriate for substrates indicated on the drawings shall be provided.

2.05 FINISHES

- A. Handrail: Stainless steel rail shall be 304 alloy with a #4 satin finish.
- B. Wall Guard Color: Color of the wall guard to be selected by the architect from the InPro Corporation

metal tone color palette.

C. Stainless Steel Brackets

1. Color of the stainless steel bracket to be selected by the architect from the solid color metal tone color palette.
2. Color of stainless steel brackets shall be #4 satin finish stainless steel.
- D. Molded Bracket Components: Molded bracket components shall be of a color matching the wall guard. Surface shall have a pebblette texture.

PART 3 EXECUTION

3.01 INSTALLERS

- A. Installer should be familiar with the installation of finished stainless steel products.

3.02 EXAMINATION

- A. Examine areas and conditions in which handrail will be installed.
1. Complete all finishing operations, including painting, before beginning installation of handrail system materials.
2. Wall surface shall be dry and free from dirt, grease and loose paint.

3.03 PREPARATION

- A. General: Prior to installation, clean substrate to remove dust, debris and loose particles.

3.04 INSTALLATION

- A. General: Locate the handrail as indicated on the approved detail drawing for the appropriate substrate and in compliance with the IPC installation instructions. Install handrail level and plumb at the height indicated on the drawings.

3.05 CLEANING

- A. At completion of the installation, clean surfaces in accordance with the IPC clean-up and maintenance instructions.