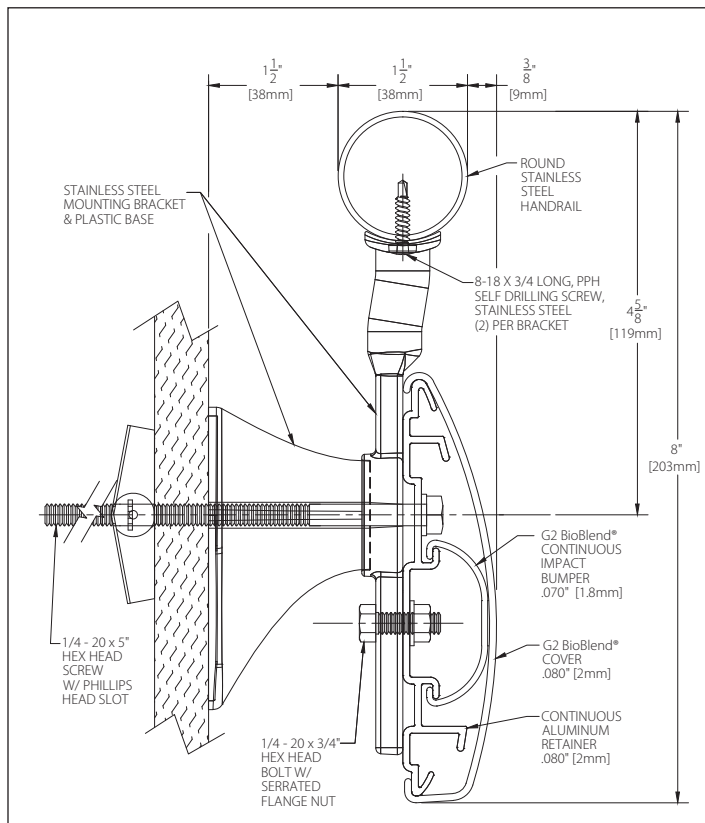


G2-3500SRV

Silhouette Handrail, Round Stainless Steel Top, G2 BioBlend® Wall Guard Bottom



- 8" (203 mm) height x 1-1/2" (38mm) gripping diameter, system extends 3-3/8" (86mm) from the wall.
- System includes 1-1/2" (38mm) diameter stainless steel top handrail and an integrated wall guard
- Wall Guard includes G2 cover, 5" (127mm) high with inner impact bumper, 1.89" (48mm) high and continuous aluminum retainer.
- Aesthetically pleasing brushed finish
- Type 304 Stainless Steel Handrail
- Durable
- Pre-configured for fast and easy installation
- 1.5" diameter meets ADA requirements
- Non-porous stainless steel surface does not promote the growth of mold and mildew

IPC.1645/REV.1

Inprocorp.com • 800.222.5556 • 262.679.9010
World Headquarters S80 W18766 Apollo Drive, Muskego, WI 53150 USA

IPC®
DOOR + WALL PROTECTION SYSTEMS
A DIVISION OF INPRO®

G2-3500SRV Silhouette Handrail, Round Stainless Steel Top, G2 BioBlend® Wall Guard Bottom

Suggested Specifications

PART 1 GENERAL

1.01 SUMMARY

- A. Handrail systems for pedestrian safety and wall protection

1.02 SECTIONS INCLUDES

- A. G2-3500SRV Silhouette Handrail System, round stainless steel handrail with integrated G2 BioBlend® wall guard

1.03 REFERENCES

- A. American National Standards Institute (ANSI)
B. American Society for Testing and Materials (ASTM)
C. American with Disabilities Act (ADA)
D. National Fire Protection Association (NFPA)
E. Society of Automotive Engineers (SAE)

1.04 SYSTEM DESCRIPTION

- A. Performance Requirements: Provide handrail system with integrated wall guard that conform to the following requirements of regulatory agencies and the quality control of IPC Door and Wall Protection Systems, InPro Corporation.
1. Fire Performance Characteristics: Provide extruded profiles conforming with the NFPA Class A fire rating. Surface burning characteristics, as determined by ASTM E-84, shall be flame spread of 25 or less and smoke development of 450 or less.
 2. Impact Strength: Provide materials that have been tested in accordance with the applicable provisions of ASTM D-256, Impact Resistance of Plastics.
 3. Chemical and Stain Resistance: Provide material that shows resistance to stain when tested in accordance with applicable provisions of ASTM D-543.
 4. Fungal and Bacterial Resistance: Provide material that does not support fungal or bacterial growth as tested in accordance with ASTM G-21 and ASTM G-22.
 5. GREENGUARD Certified: Provide GREENGUARD Certified profiles. Profiles shall meet the requirements of GREENGUARD Certification Standards for Low-Emitting Products and GREENGUARD Product Emission Standard for Children & Schools.
 6. Color Consistency: Provide components matched in accordance with SAE J-1545 - (Delta E) with a color difference no greater than 1.0 units using CIE Lab, CIE CMC, CIE LCh, Hunter Lab or similar color space scale systems.
 7. Code Compliance: Provide handrails that comply with all current ANSI and ADA requirements.

1.05 SUBMITTALS

- A. Product Data: Manufacturer's printed product data for each product indicated in this section.
B. Detail Drawings: Mounting details with appropriate fasteners for specific project substrates.
C. Samples: Verification samples of handrail, 7" (178mm) long, in full size profiles with mounting brackets of each type indicated.
D. Manufacturer's Installation Instructions: Printed installation instructions for each handrail.

1.06 DELIVERY, STORAGE AND HANDLING

- A. Deliver materials in unopened factory packaging to the jobsite.
B. Inspect materials at delivery to assure that specified products have been received.
C. Store in original packaging in a climate controlled environment away from direct sunlight.

1.07 WARRANTY

- A. Standard IPC limited lifetime warranty against material and manufacturing defects.

PART 2 PRODUCTS

2.01 MANUFACTURERS

- A. Acceptable Manufacturer: IPC Door and Wall Protection Systems
InPro Corporation, PO Box 406, Muskego, WI 53150 USA;
Telephone 800-543-1729, Fax: 888-715-8407,
Internet address: www.inprocorp.com
B. Substitutions: Not permitted
C. Provide all handrails and wall protection from a single manufacturer.

2.02 MANUFACTURED UNITS

- A. Stainless Steel/Vinyl Handrail System
1. G2-3500SRV Silhouette Handrail, 8" (203 mm) height x 1-1/2" (38mm) gripping diameter, system extends 3'-3/8" (86mm) from the wall. System includes 1-1/2" (38mm) diameter stainless steel top handrail and an integrated wall guard. Wall Guard includes G2 cover, 5" (127mm) high with inner impact bumper, 1.89" (48mm) high and continuous aluminum retainer.

2.03 MATERIALS

- A. Stainless Steel:
1. Continuous stainless steel rail shall be type 304 alloy with a number 4 satin finish (type 304 meets NSF Standard 51).
2. Stainless steel brackets, returns and corners shall be type 304, stainless steel (type 304 meets NSF Standard 51).
B. G2 BioBlend®
1. G2 BioBlend®: Snap on cover of .080" (2mm) thickness shall be extruded from chemical and stain resistant G2 BioBlend®. Inner snap on impact bumper of .070" (1.8mm) thickness shall be extruded from chemical and stain resistant G2 BioBlend®.
C. ABS
1. Molded components shall be made of ABS (Acrylonitrile Butadiene Styrene)
D. Aluminum
1. Continuous aluminum retainer of .080" (2mm) thickness shall be fabricated from 6063-T5 aluminum, with a mill finish.

2.04 COMPONENTS

- A. Handrail returns and corners shall be type 304, stainless steel and a finish to match handrails.
B. Wall guard returns and corners shall be fabricated of ABS (Acrylonitrile Butadiene Styrene) in a finish/color to match the wall guard.
C. Stainless steel brackets shall be type 304, stainless steel with a brushed finish.
D. Molded bracket components shall be fabricated from injection molded ABS (Acrylonitrile Butadiene Styrene).
E. Fasteners: All mounting systems accessories appropriate for substrates indicated on the drawings shall be provided.

2.05 FINISHES

- A. Handrail: Stainless steel rail shall be 304 alloy with a #4 satin finish.
B. Stainless Steel Brackets: Stainless steel brackets shall be #4 satin finish stainless steel.
C. Molded Components: Molded components shall be of a color matching the wall guard. Surface shall have a pebblette texture.

PART 3 EXECUTION

3.01 INSTALLERS

- A. Installer should be familiar with the installation of finished stainless steel products.

3.02 EXAMINATION

- A. Examine areas and conditions in which handrail will be installed.
1. Complete all finishing operations, including painting, before beginning installation of handrail system materials.
2. Wall surface shall be dry and free from dirt, grease and loose paint.

3.03 PREPARATION

- A. General: Prior to installation, clean substrate to remove dust, debris and loose particles.

3.04 INSTALLATION

- A. General: Locate the handrail as indicated on the approved detail drawing for the appropriate substrate and in compliance with the IPC installation instructions. Install handrail level and plumb at the height indicated on the drawings.

3.05 CLEANING

- A. At completion of the installation, clean surfaces in accordance with the IPC clean-up and maintenance instructions.