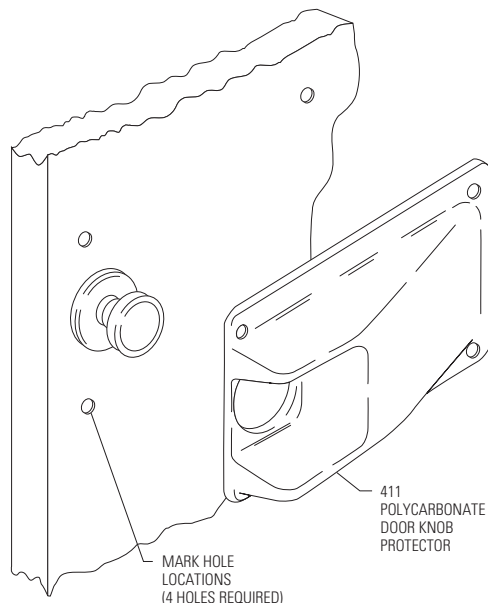


Installation Instructions

Door Knob/Lever Protectors:

Models 411, 412, 413L, 413R

FIG. 1 (Model 411 shown)

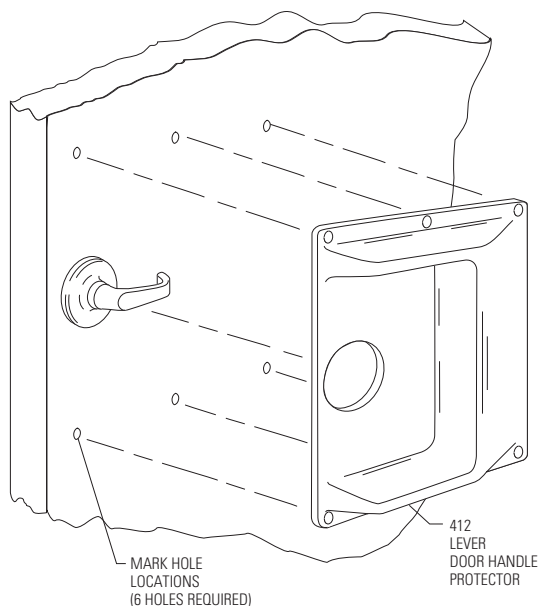


Please read all instructions before installing door knob/lever protectors.

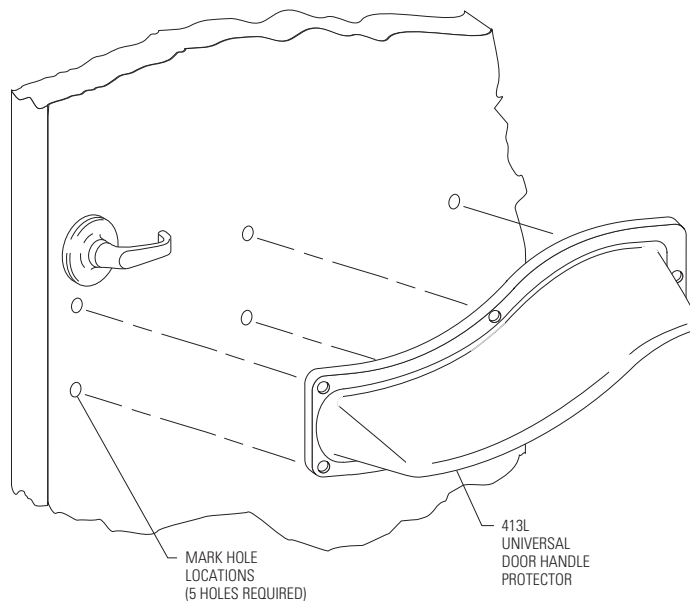
Material must be stored, installed and used in environmentally controlled conditions.

1. Position door knob/lever protector on the door. Using the protector as a template, mark the locations of the mounting holes on the door. See Figure 1.

(Model 412 shown)



(Model 413 shown)



IPC.455/REV.4



Installation Questions?

Contact our Installation Hotline 866.EZINPRO
For Sales & Customer Service call 800.222.5556

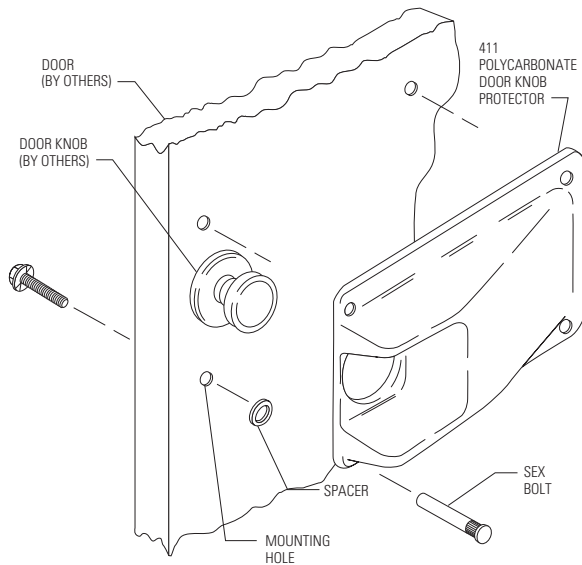
INPRO CORPORATION
Interior and Exterior Architectural Products

Installation Instructions

Door Knob/Lever Protectors:

Models 411, 412, 413L, 413R

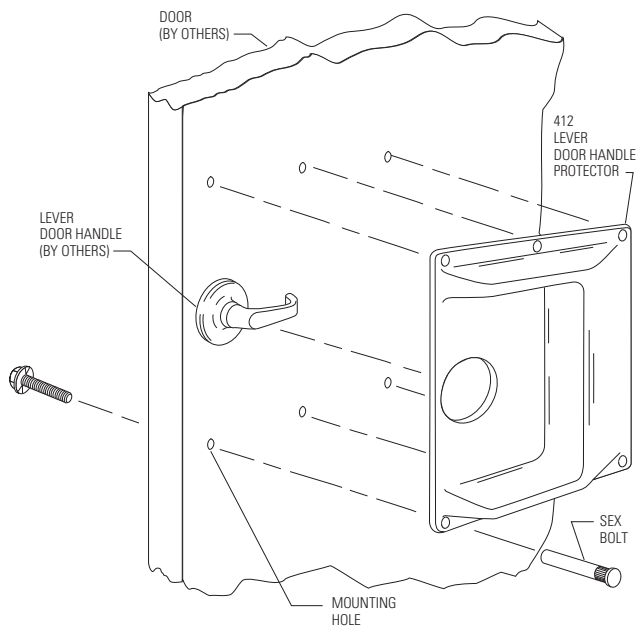
FIG. 2 (Model 411 shown)



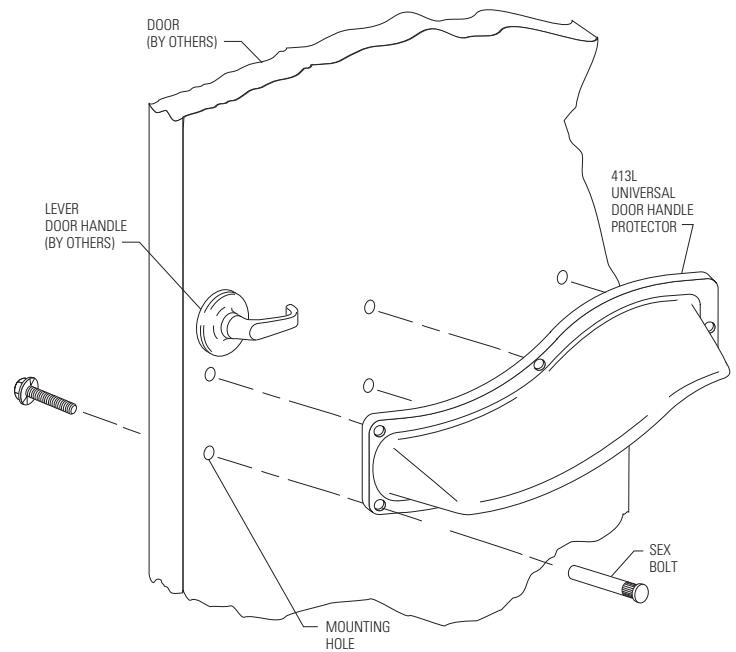
2. Using a 3/8" drill bit, drill marked holes through the door. Secure door knob/lever protector to the door.

See Figure 2.

(Model 412 shown)



(Model 413 shown)



Installation Questions?

Contact our Installation Hotline 866.EZINPRO
For Sales & Customer Service call 800.222.5556

INPRO CORPORATION
Interior and Exterior Architectural Products