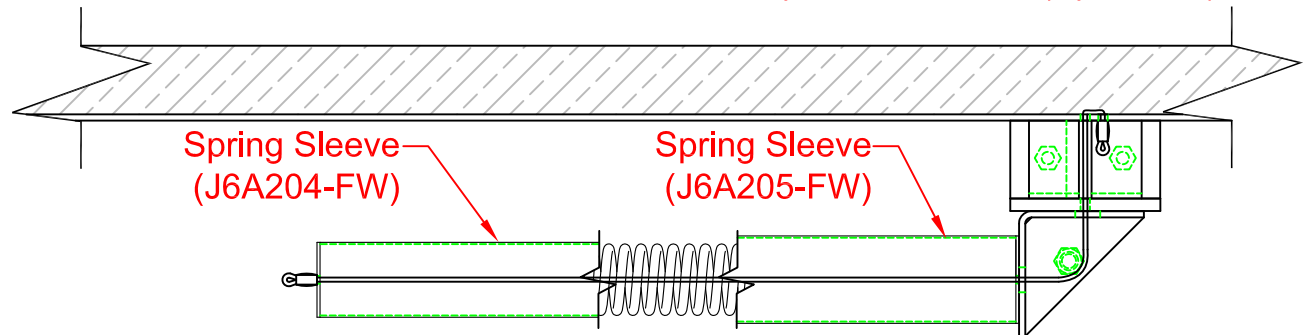


CUSTOM 601-A07/A09-300 THERMAL

Joint Width		Movement ±			
		Horizontal		Vertical	
US	mm	US	mm	US	mm
12"	305	1"	25	1"	25

SEISMIC

Joint Width		Movement ±			
		Horizontal		Vertical	
US	mm	US	mm	US	mm
12"	305	6"	152	6"	152



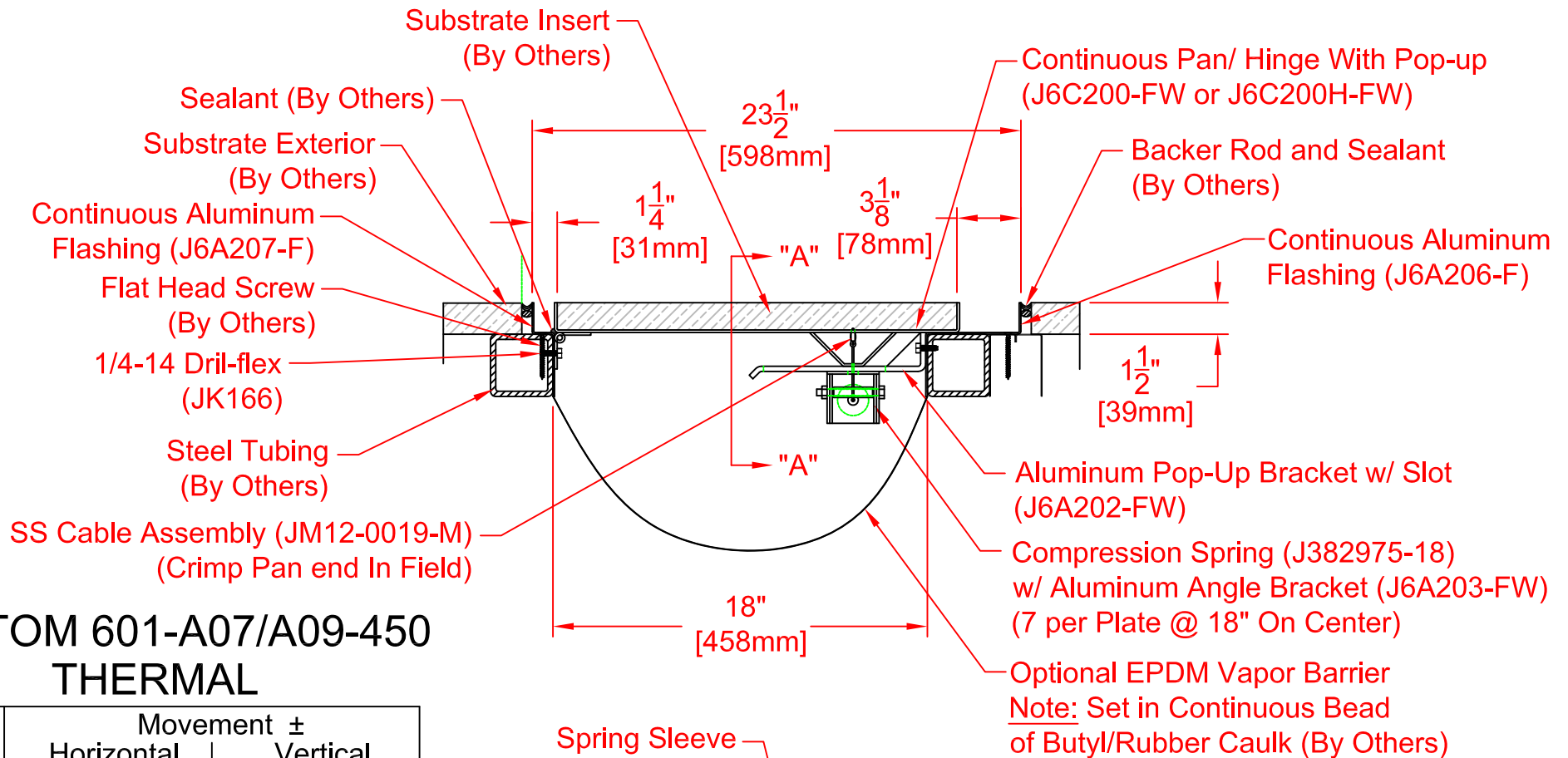
VIEW A - A

JOINTMASTER™
EXPANSION JOINT SYSTEMS

DATE: 9-11-12
SCALE: 1:4
DOC: CADJM.141/Rev1

APPLICATION-
EXTERIOR POP-UP SYSTEM
WALL/WALL & WALL/CORNER CONDITION

inpro.



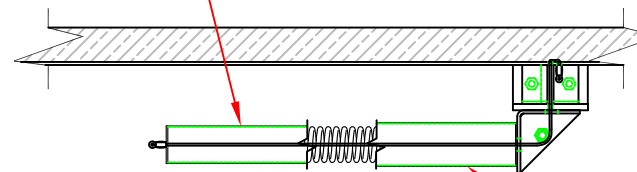
CUSTOM 601-A07/A09-450 THERMAL

Joint Width		Movement ±			
		Horizontal		Vertical	
US	mm	US	mm	US	mm
18"	457	1"	25	1"	25

SEISMIC

Joint Width		Movement ±			
		Horizontal		Vertical	
US	mm	US	mm	US	mm
18"	457	9"	229	9"	229

Spring Sleeve (J6A204-FW)



VIEW A - A

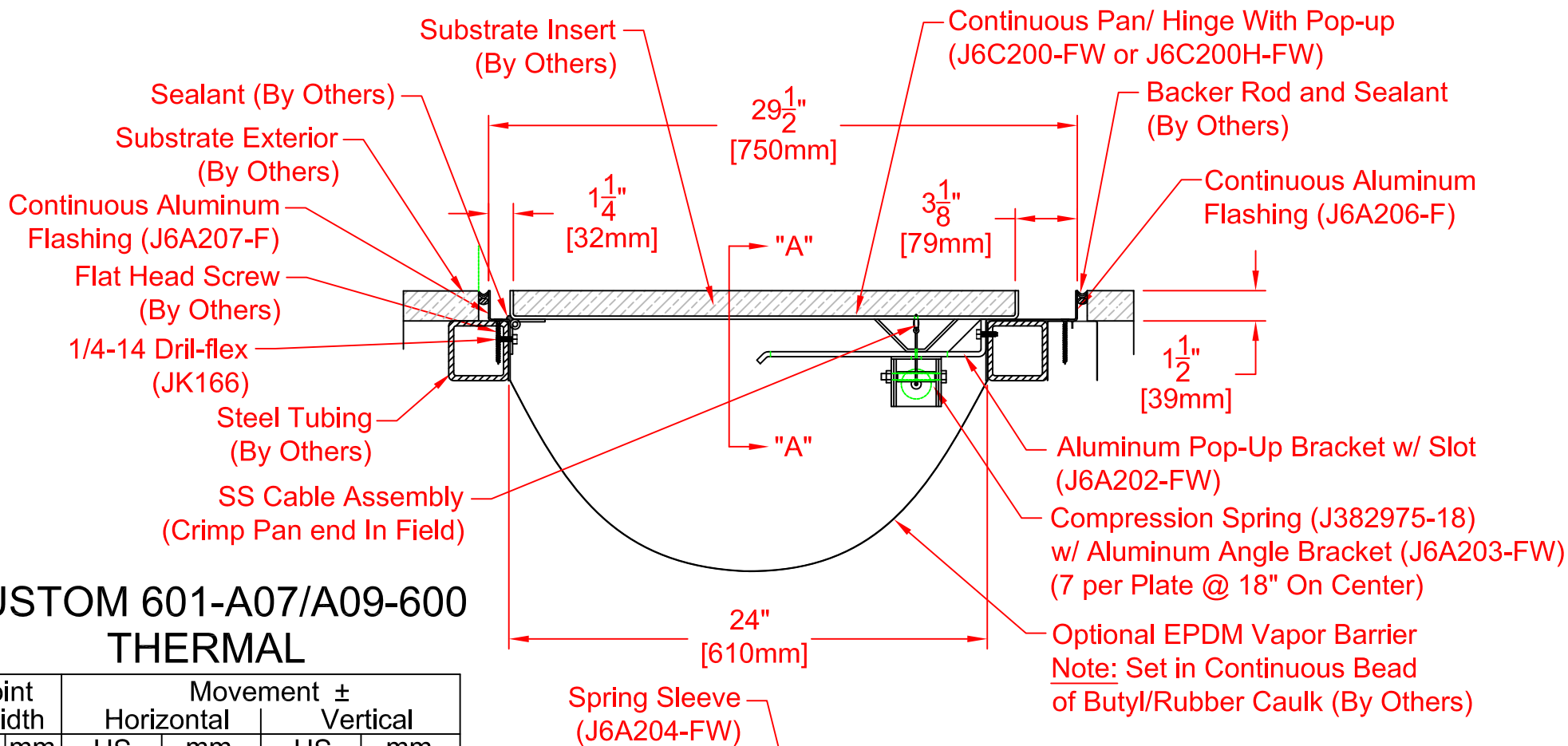
Spring Sleeve (J6A205-FW)

JOINTMASTER™
EXPANSION JOINT SYSTEMS

DATE: 9-11-12
SCALE: 1:8
DOC: CADJM.141/Rev1

APPLICATION-
EXTERIOR POP-UP SYSTEM
WALL/WALL & WALL/CORNER CONDITION

inpro.



CUSTOM 601-A07/A09-600 THERMAL

Joint Width		Movement ±			
		Horizontal		Vertical	
US	mm	US	mm	US	mm
24"	610	1"	25	1"	25

SEISMIC

Joint Width		Movement ±			
		Horizontal		Vertical	
US	mm	US	mm	US	mm
24"	610	12"	305	12"	305

