

Steel Poles



RTS ROUND TAPERED STEEL

Catalog #		Type
Project		
Comments		Date
Prepared by		

FEATURES

- ASTM Grade steel base plate with ASTM A366 base cover
- Hand hole assembly 3" x 5" on RTS poles
- 20'-50' mounting heights
- Drilled or tenon (specify)

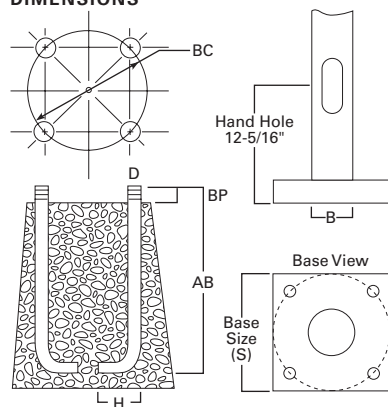
ORDERING INFORMATION

SAMPLE NUMBER: RTS8A30SF2XXG

Product Family	Shaft Size (Inches) ¹	Wall Thickness (Inches)	Mounting Height (Feet)	Base Type	Finish	Mounting Type	Number and Location of Arms	Arm Lengths (Feet)	Options (Add as Suffix)
RTS=Round Tapered Steel	6=6" 7=7" 8=8" 9=9" Steel; 6-3/4" Aluminum 0=10"	A=0.120" D=0.180"	20=20' 25=25' 30=30' 35=35' 39=39' 45=45' 50=50'	S=Square Steel Base	F=Dark Bronze G=Galvanized Steel J=Summit White K=Carbon Bronze L=Dark Platinum P=Primer Powder Coat R=Hartford Green S=Silver T=Graphite Metallic V=Grey W=White X=Custom Color Y=Black	2=2-3/8" O.D. Tenon (4" Long) 3=3-1/2" O.D. Tenon (5" Long) 4=4" O.D. Tenon (6" Long) 5=3" O.D. Tenon (4" Long) 6=2-3/8" O.D. Tenon (6" Long) 7=4" O.D. Tenon (10" Long) A=Type A Drilling C=Type C Drilling E=Type E Drilling F=Type F Drilling G=Type G Drilling J=Type J Drilling K=Type K Drilling M=Type M Drilling R=Type R Drilling S=Standard Upsweep Arm Z=Type Z Drilling	1=Single 2=2 at 180° 3=Triple ² 4=4 at 90° 5=2 at 90° 6=3 at 90° 7=2 at 120° X=None	X=None	A=1/2" Tapped Hub (Specify location desired) B=3/4" Tapped Hub (Specify location desired) C=Convenience Outlet ³ E=GFCI Convenience Outlet ³ G=Ground Lug H=Additional Hand Hole ⁴ L=Drilled for Bumper Glitter V=Vibration Damper

NOTES: 1. All shaft sizes nominal. 2. Square poles are 3 at 90°, round poles are 3 at 120°. 3. Outlet is located 4' above base and on same side of pole as hand hole, unless specified otherwise. Receptacle not included, provision only. 4. Additional hand hole is located 12" below pole top and 90° from standard hand hole location, unless otherwise specified.

DIMENSIONS



WARNING: Customer is responsible for engineering analysis to confirm pole and fixture compatibility for all applications. Refer to pole white paper WP513001EN for additional support information. Before installing, make sure proper anchor bolts and templates are obtained. The use of unauthorized accessories such as banners, signs, cameras or pennants for which the pole was not designed voids the pole warranty and may result in pole failure causing serious injury or property damage. Information regarding total loading capacity can be supplied upon request. The pole warranty is void unless poles are used and installed as a complete pole and luminaire combination. This warranty specifically excludes failure as the result of a third party act or omission, misuse, unanticipated uses, fatigue failure or similar phenomena resulting from induced vibration, harmonic oscillation or resonance associated with movement of air currents around the product.

Specifications and dimensions subject to change without notice. Consult your lighting representative at Eaton or visit www.eaton.com/lighting for available options, accessories and ordering information.

Effective Projected Area (At Pole Top)

Mounting Height (Feet)	Catalog Number ^{1,2}	Wall Thickness (Inches)	Base Square ³ (Inches)	Bolt Circle Diameter (Inches)	Anchor Bolt Projection ³ (Inches)	Shaft Taper ³ (Inches)	Anchor Bolt Diameter x Length x Hook (Inches)	Net Weight (Pounds)	Maximum Effective Projected Area (Square Feet) ⁴				Max. Fixture Load - Includes Bracket (Pounds)
MH			S	BC	BP	B	D x AB x H		80 mph	90 mph	100 mph	110 mph	
20	RTS6A20S	0.120	10-1/2	11	4-1/2	6.3 x 3.5	3/4 x 25 x 3	145	19.6	15.0	11.6	9.5	100
25	RTS7A25S	0.120	10-1/2	11	4-1/2	7.0 x 3.5	3/4 x 25 x 3	187	14.7	11.0	8.6	6.8	200
30	RTS8A30S	0.120	12-1/2	12-1/2	5	7.7 x 3.5	1 x 36 x 4	254	18.0	13.5	10.5	8.4	300
35	RTS8A35S	0.120	12-1/2	12-1/2	5	8.4 x 3.5	1 x 36 x 4	305	16.1	11.9	9.1	7.2	300
35	RTS9D35S	0.180	12-1/2	12-1/2	5	8.4 x 3.5	1 x 36 x 4	452	20.5	15.4	12.0	9.6	300
39	RTS9A39S	0.120	12-1/2	12-1/2	5	8.9 x 3.5	1 x 36 x 4	347	14.5	10.7	8.1	6.2	300
39	RTS9D39S	0.180	12-1/2	12-1/2	5	8.9 x 3.5	1 x 36 x 4	516	16.9	12.5	9.6	7.5	300
45	RTS0A45S ⁵	0.120	13-1/2	13-1/2	5	10.2 x 4.2	1 x 36 x 4	466	14.5	10.1	7.7	5.8	300
45	RTS0D45S ⁵	0.180	13-1/2	13-1/2	6	10.2 x 4.2	1-1/4 x 42 x 6	670	27.0	20.5	16.1	13.0	300
50	RTS0A50S ⁵	0.120	13-1/2	13-1/2	5	10.2 x 3.5	1 x 36 x 4	490	7.4	4.9	3.3	2.2	400
50	RTS0D50S ⁵	0.180	13-1/2	13-1/2	6	10.2 x 3.5	1-1/4 x 42 x 6	704	19.8	14.7	11.2	8.6	400

Effective Projected Area (Two Feet Above Pole Top)

Mounting Height (Feet)	Catalog Number ^{1,2}	Wall Thickness (Inches)	Base Square ³ (Inches)	Bolt Circle Diameter (Inches)	Anchor Bolt Projection ³ (Inches)	Shaft Taper ³ (Inches)	Anchor Bolt Diameter x Length x Hook (Inches)	Net Weight (Pounds)	Maximum Effective Projected Area (Square Feet) ⁴				Max. Fixture Load - Includes Bracket (Pounds)
MH			S	BC	BP	B	D x AB x H		80 mph	90 mph	100 mph	110 mph	
20	RTS6A20S	0.120	10-1/2	11	4-1/2	6.3 x 3.5	3/4 x 25 x 3	145	17.4	13.4	10.4	8.4	100
25	RTS7A25S	0.120	10-1/2	11	4-1/2	7.0 x 3.5	3/4 x 25 x 3	187	13.7	10.0	7.8	6.2	200
30	RTS8A30S	0.120	12-1/2	12-1/2	5	7.7 x 3.5	1 x 36 x 4	254	16.7	12.6	9.7	7.7	300
35	RTS8A35S	0.120	12-1/2	12-1/2	5	8.4 x 3.5	1 x 36 x 4	305	15.1	11.2	8.6	6.7	300
35	RTS9D35S	0.180	12-1/2	12-1/2	5	8.4 x 3.5	1 x 36 x 4	452	19.5	14.6	11.3	9.0	300
39	RTS9A39S	0.120	12-1/2	12-1/2	5	8.9 x 3.5	1 x 36 x 4	347	13.8	10.1	7.6	5.9	300
39	RTS9D39S	0.180	12-1/2	12-1/2	5	8.9 x 3.5	1 x 36 x 4	516	16.1	11.9	9.1	7.1	300
45	RTS0A45S ⁵	0.120	13-1/2	13-1/2	5	10.2 x 4.2	1 x 36 x 4	466	13.2	9.8	7.3	5.6	300
45	RTS0D45S ⁵	0.180	13-1/2	13-1/2	6	10.2 x 4.2	1-1/4 x 42 x 6	670	26.0	19.8	15.5	12.4	300
50	RTS0A50S ⁵	0.120	13-1/2	13-1/2	5	10.2 x 3.5	1 x 36 x 4	490	7.1	4.7	3.7	2.1	400
50	RTS0D50S ⁵	0.180	13-1/2	13-1/2	6	10.2 x 3.5	1-1/4 x 42 x 6	704	19.0	14.1	10.7	8.3	400

NOTES:

1. Catalog number includes pole with hardware kit. Anchor bolts not included. Before installing, make sure proper anchor bolts and templates are obtained.

2. Tenon size or machining for rectangular arms must be specified. Hand hole position relative to drill location.

3. Shaft size, base square, anchor bolts and projections may vary slightly. All dimensions nominal.

4. EPAs based on shaft properties with wind normal to flat. EPAs calculated using base wind velocity as indicated plus 30% gust factor.

5. Two-piece pole.