



EcoPlus and EcoSlim Drawings and Charts (TSF)

Wiring Diagrams:

EL000979 - Non-Dimmable / No RF Filter
 EL000980 - Dimmable / No RF Filter
 EL000364 - Single Dimmer with Multiple Power Systems
 EL000981 - Non-Dimmable / RF Filter
 EL000982 - Dimmable / RF Filter

For:

EP22 Series = EP22, EP22M, EP22G
 EP24 Series = EP24, EP24M, EP24G
 EP26 Series = EP26, EP26M, EP26G
 EP34 Series = EP34, EP34M, EP34G
 EP33 Series = EP33, EP33M, EP33G
 EP36 Series = EP36, EP36M, EP36G
 EP44 Series = EP44, EP44M, EP44G

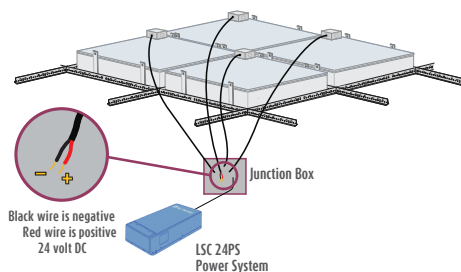
ES22 Series = ES22, ES22M, ES22G
 ES24 Series = ES24, ES24M, ES24G
 ES26 Series = ES26, ES26M, ES26G
 ES33 Series = ES33, ES33M, ES33G
 ES34 Series = ES34, ES34M, ES34G
 ES36 Series = ES36, ES36M, ES36G
 ES44 Series = ES44, ES44M, ES44G

Dimmer Assembly:

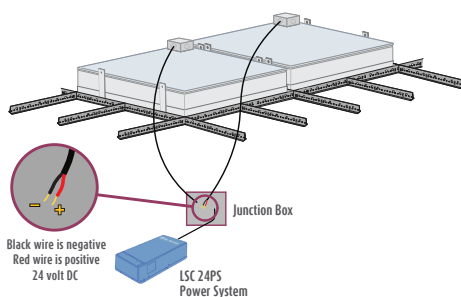
EL000195 - Dimmer Wall Plate Assembly

Sky Factory LSC 24PS Power System: Electrical Panel and Dimensions

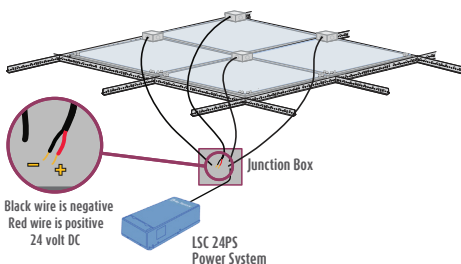
Wire Sizing Chart



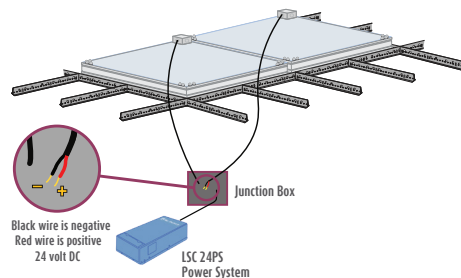
Standard w/ EcoPlus – EP22 & 24 Series



Revelation w/ EcoPlus – EP26,33,34,36 & 44 Series



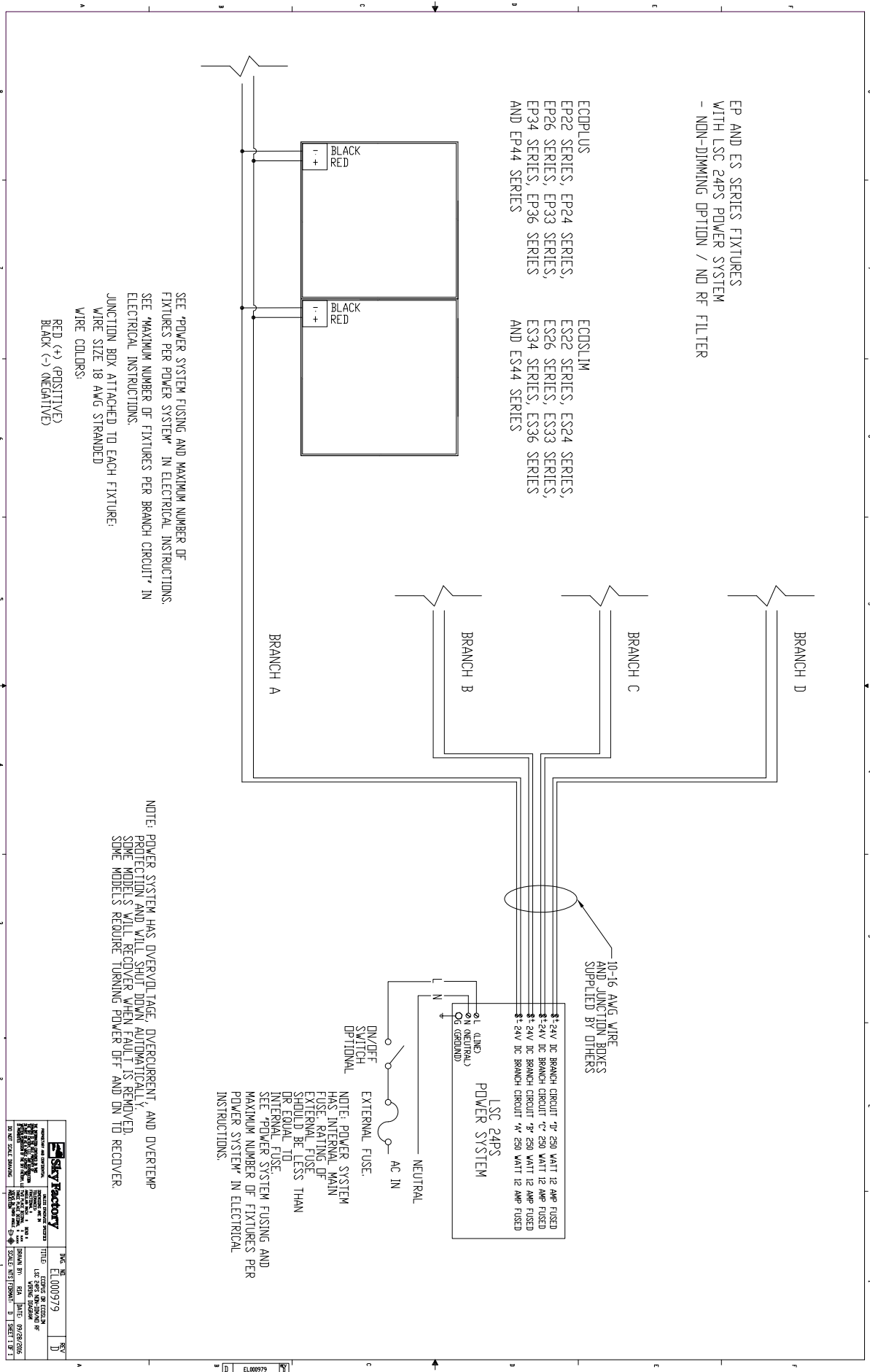
Standard w/ EcoSlim – ES22 & 24 Series



Revelation w/ EcoSlim – ES26,33,34,36 & 44 Series

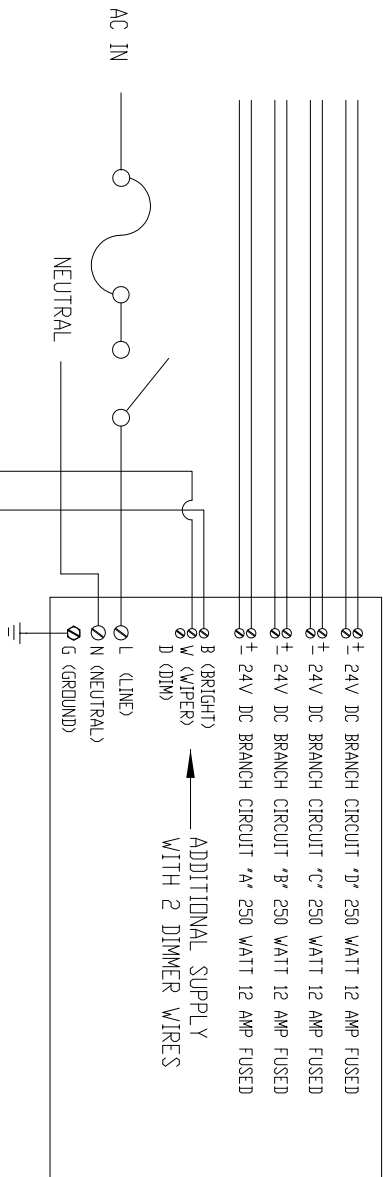
For technical support at any time during the installation, please call us **toll free at 866-759-3228**.

We want your installation to go as smoothly as possible. Thank you for choosing The Sky Factory.

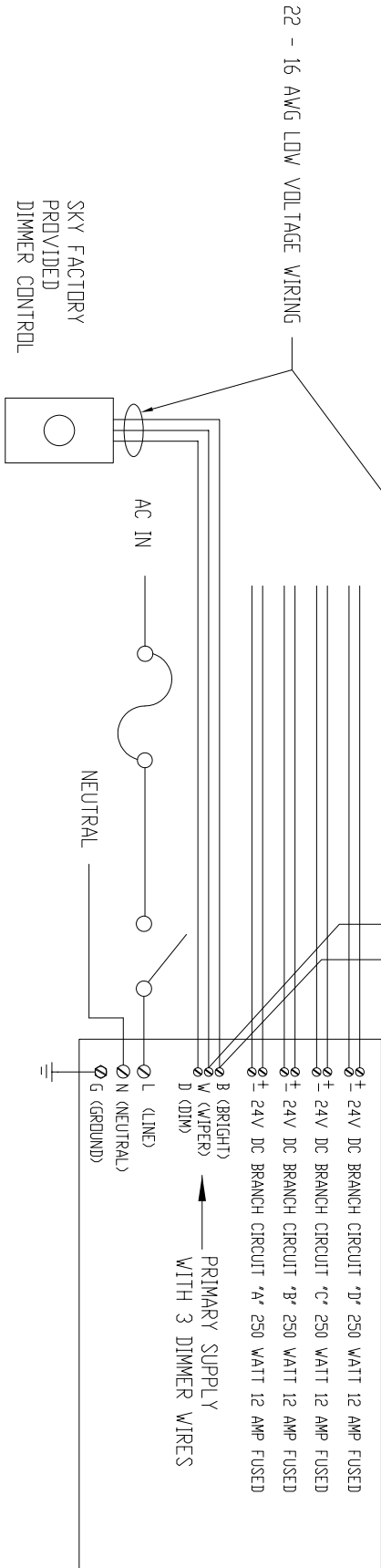


MULTIPLE LSC 24PS POWER SYSTEMS
AND SINGLE DIMMER CONTROL

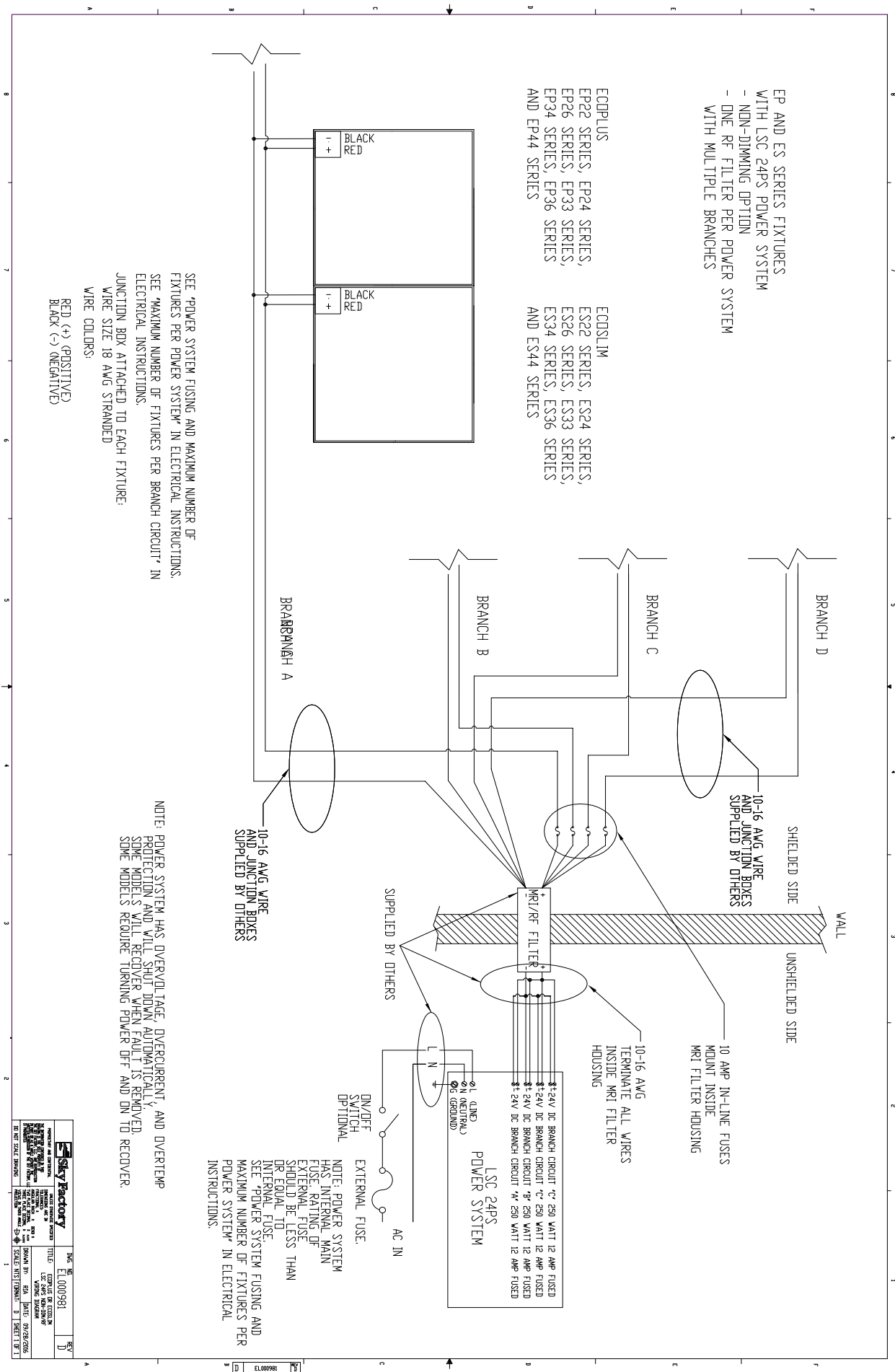
LSC 24PS POWER SYSTEM



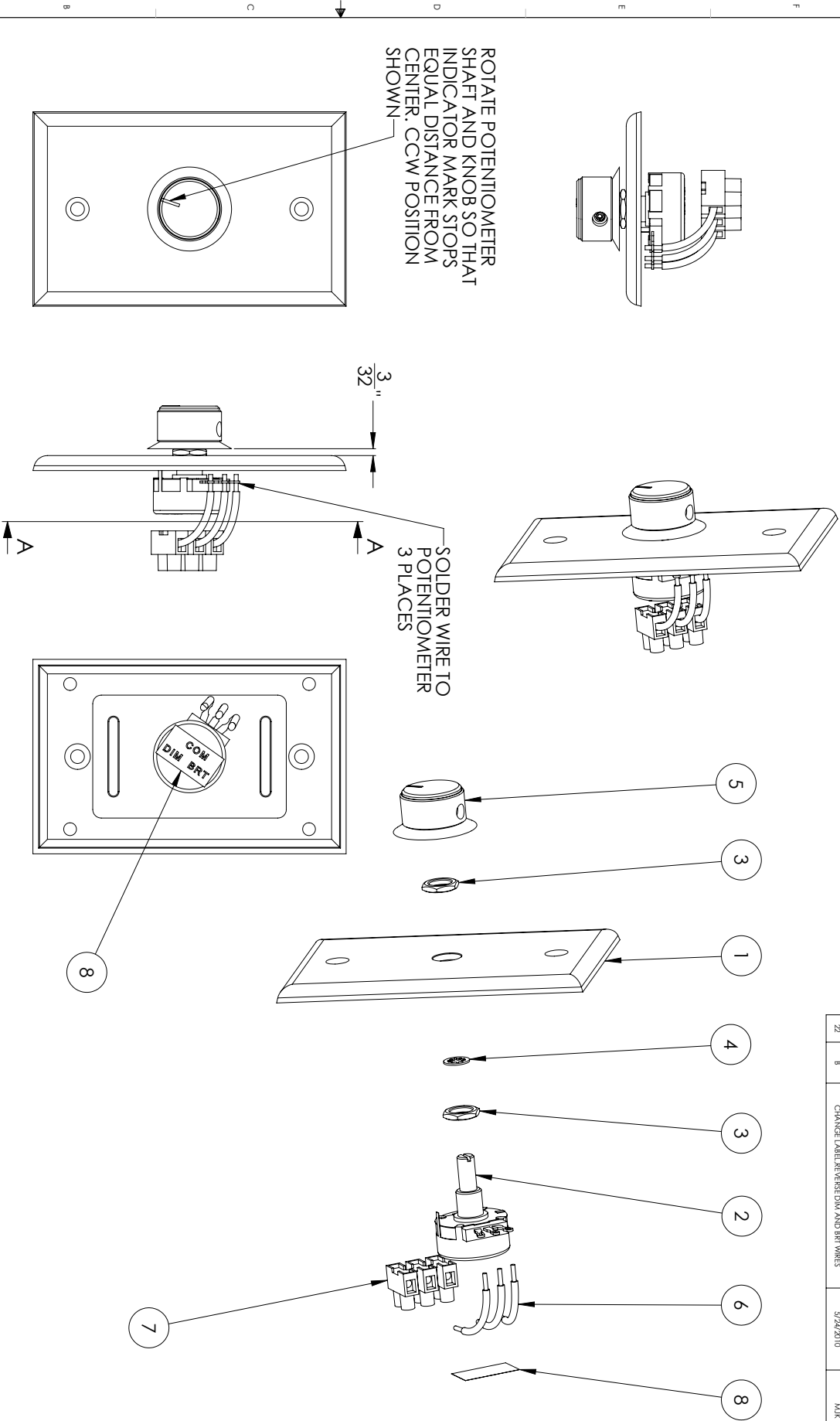
LSC 24PS POWER SYSTEM



Sky Factory		Rev. 01
WIRING DIAGRAM		8
MULTIPLE DIMMER CONTROL SYSTEMS		
DATE: 09/29/2015		
SCALE: NOT TO SCALE		
BY: [Signature]		
CHECKED: [Signature]		
APPROVED: [Signature]		



REVISIONS				
ECRN	REV	DESCRIPTION	DATE	APPROVED
22	8	CHANGE LABEL REVERSE DIM AND BRT WIRES	5/24/2010	MAK



ITEM NO.	PART NUMBER	DESCRIPTION	QTY.
1	EI000183	WALL PLATE, WHITE, 7/16 HOLE	1
2	EI000184	POTENTIOMETER, DIMMER, 10K, 1/4 DIA X 5/8 SHAFT	1
3	EI000193	HEX NUT 3/8-32 UNEF	2
4	Internal tooth-lock washers, AI		1
5	EI000182	KNOB, DIMMER, W/SET SCREW, 1/4 DIA SHAFT	1
6	EI000196	WIRE 16AWG, STRANDED TFFN BLACK, 2 IN	3
7	EI000185	TERMINAL BLOCK 3 POSITION (for dimmer pot field wiring)	1
8	EI000361	LABEL, PWR SYS, DIMMER, DIM-COM-BRT	1

UNLESS OTHERWISE SPECIFIED, DIMENSIONS ARE IN INCHES.

DRAWING: 11-04-09

CHECKED: BNG/APP

DATE: 11-04-09

DESIGNED: BNG/APP

DATE: 11-04-09

REVISIONS:

1	WALL PLATE ASSY
2	WALL PLATE ASSY
3	WALL PLATE ASSY
4	WALL PLATE ASSY
5	WALL PLATE ASSY
6	WALL PLATE ASSY
7	WALL PLATE ASSY
8	WALL PLATE ASSY

3RD ANGLE

FAIRFIELD, IA

SCALE: 1:1

WRIGHT

SHEET 1 OF 1

TITLE: DIMMER WALL PLATE ASSY

REV: B

Sky Factory LSC 24PS Power System: Electrical Panel and Dimensions

Power system electrical panel (with cover removed):

branch circuit terminal blocks and fuse

— accepts wire size 10-22 AWG

dimmer terminal blocks

— accepts wire size 16-22 AWG

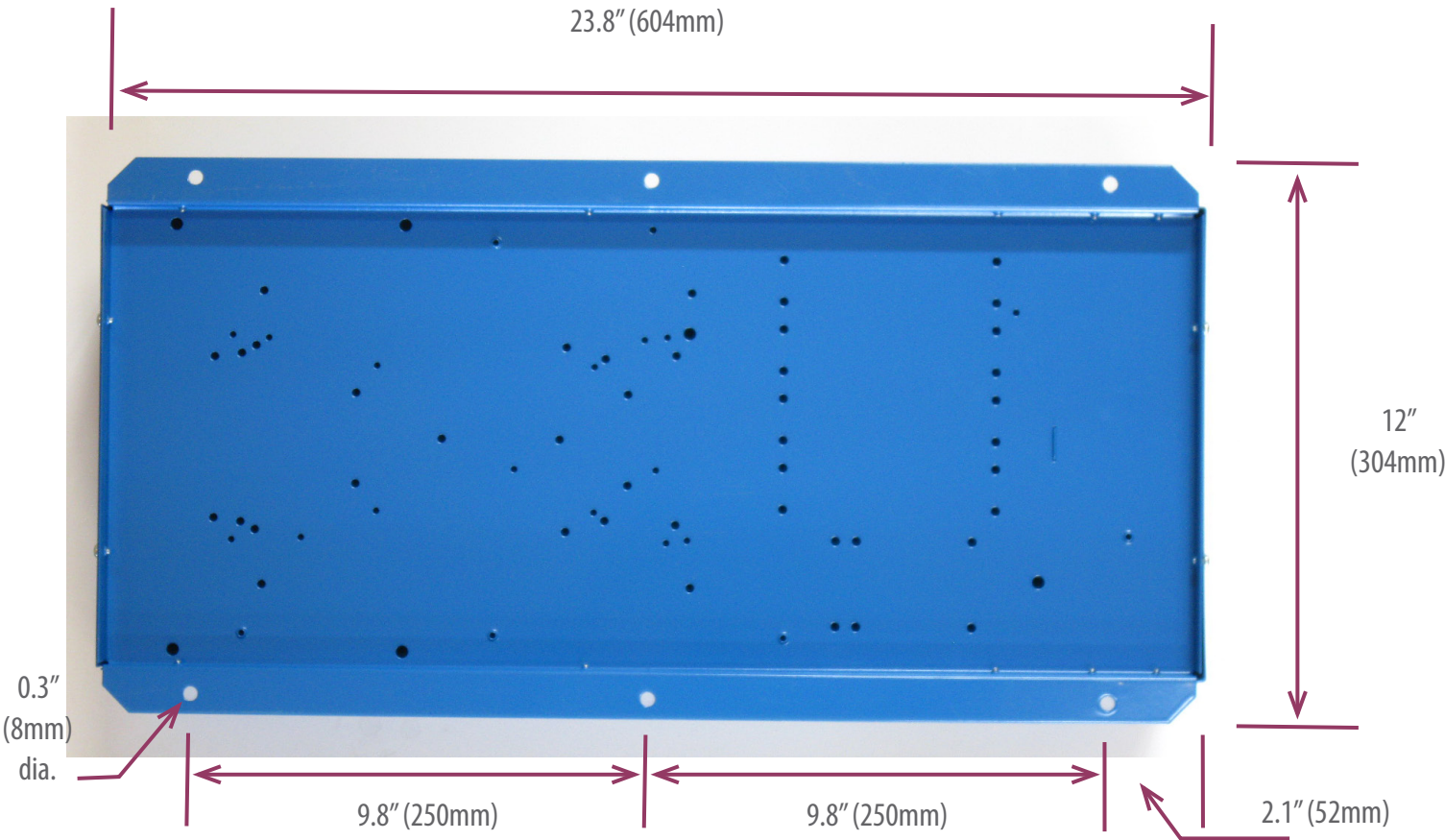
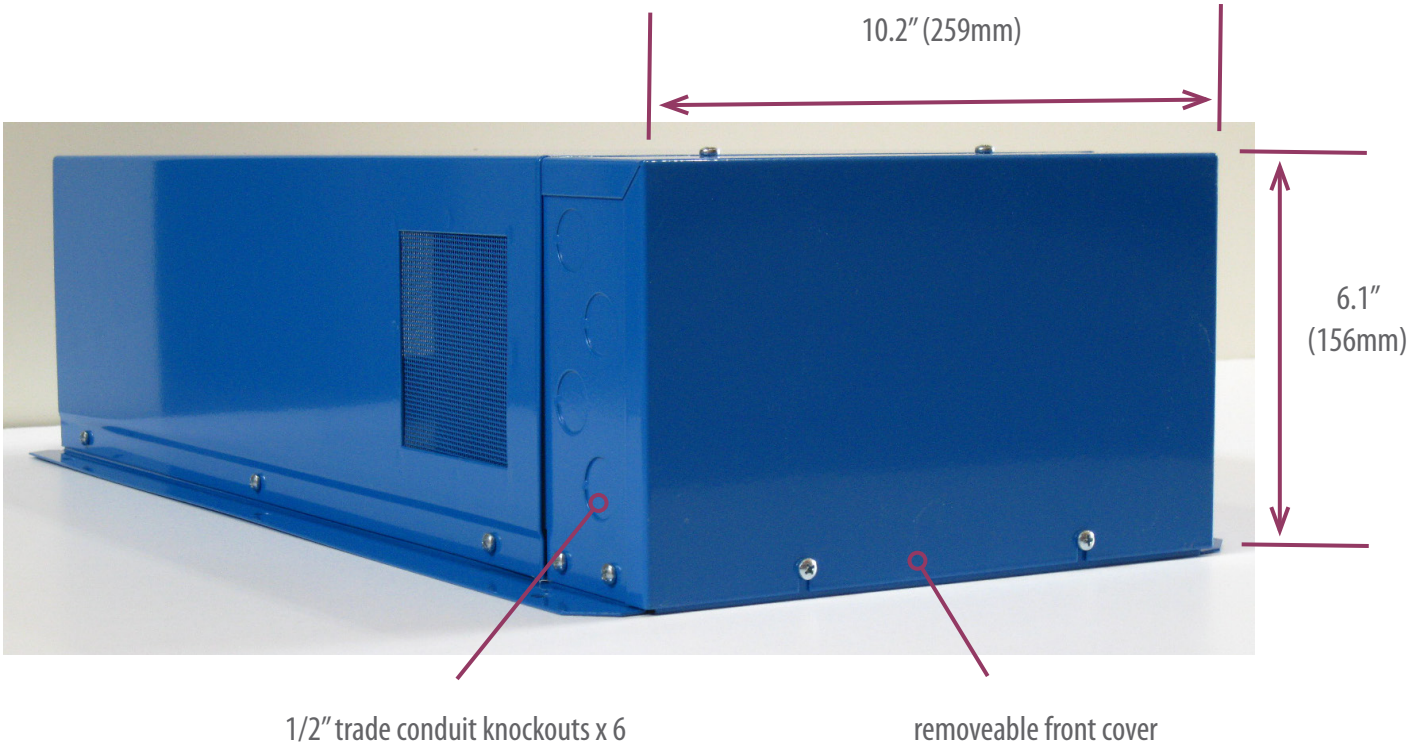


AC input terminal blocks

— accepts wire size 10-18 AWG

Note: panel shown here with two branch circuits

Power system dimensions and mounting hole layout:



Wire Sizing Chart

This chart is a guideline for recommended wiring practice.

Applies to 24V DC power only, i.e. from "fixture to branch circuit on power system."

Not meant for "V AC to power system" nor "dimmer to power system."

Wire sizes in AWG Conversion chart below.

Distance: Feet (Meters)	AWG for 5A	AWG for 10A	AWG for 15A
20 (6)	18	14	12
30 (9)	16	12	10
40 (12)	14	10	10
50 (15)	12	10	*
60 (18)	12	10	*
80 (24)	10	*	*
100 (30)	10	*	*
* Terminal block wire range #10 - #22 Awg.			

AWG	MM
10	6.271
11	5.156
12	3.302
13	2.629
14	2.088
15	1.652
16	1.308
17	1.039
18	0.823