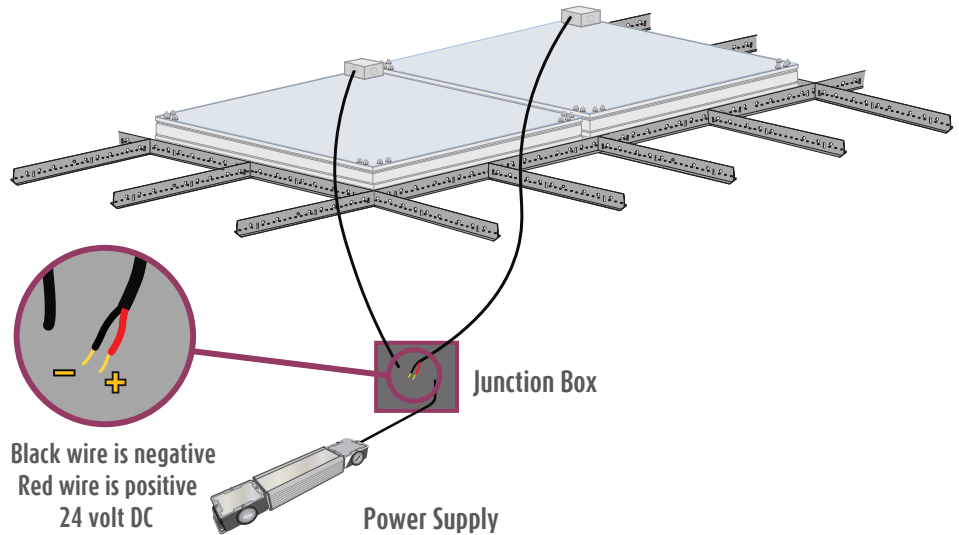




Revelation w/ EcoSlim Electrical Instructions (HLG)



Installation Instructions includes:

Revelation w/ EcoSlim Electrical Instructions (HLG)

Wiring Diagram EL001180

Number of ES26 Series Fixtures per Power Supply

Number of ES33 Series Fixtures per Power Supply

Number of ES34 Series Fixtures per Power Supply

Number of ES36 Series Fixtures per Power Supply

Number of ES44 Series Fixtures per Power Supply

Wire Sizing Chart

Custom SkyCeiling wiring diagram (where applicable)

For technical support at any time during the installation, please call us **toll free at 866-759-3228**.

We want your installation to go as smoothly as possible. Thank you for choosing The Sky Factory.

Revelation w/ EcoSlim Electrical Requirements:

ES26 Series = ES26, ES26M, ES26G

ES33 Series = ES33, ES33M, ES33G

ES34 Series = ES34, ES34M, ES34G

ES36 Series = ES36, ES36M, ES36G

ES44 Series = ES44, ES44M, ES44G

NOTE: For custom sizes, see Custom SkyCeiling wiring diagram (where applicable)

All EcoSlim fixtures are 24V DC only.

EcoSlim fixtures must be powered only by provided UL Recognized, CE Compliant 24V DC power supply

Dry locations only.

For number of fixtures per power supply, see

“Number of ESXX Series Fixtures per HLG Power Supply” on page 7-9

For installations with one or more custom sizes, see

Custom SkyCeiling wiring diagram attached

For dimming requirements, see page 5.

RF filter, if used, is not provided by The Sky Factory.

Electrical work must be performed by a qualified electrician who is familiar with DC lighting systems and must conform to all local and national codes.

Sky Factory provided external dimmable power supply:

Input (Typ) 90-305V, 47 - 63 Hz

Output 24V DC

UL (U.S. and Canada) Recognized and CE Compliant

Surface mountable

HLG-80H only:

Class 2, UL8750 Listed and CE compliant

Junction box on both input and output ends

Junction box wiring access holes limited to 1/2" nominal trade size conduit

Suitable for dry/damp/wet locations

Sky Factory provided dimmer control (where specified)

Lutron Diva DVSTV 0 - 10V sliding dimmer/switch (UL & CSA compliant)

Input: auto-ranging 120 - 277V AC

Lutron Lyneo preset 0 - 10V sliding dimmer/switch and external relay (CE compliant):

Input: 220 - 240V AC

Step 1: Wiring the Revelation fixtures to the power supply

See supporting drawing and charts on pages 6-9 and Custom SkyCeiling wiring diagram (where applicable)

EcoSlim Lighting System - ES26 Series to ES44 Series				
TSF Model No.	Light Box Dimensions and Weight Only		System Wattage (Max)	Input Current @ 24 Volts DC
	WxLxH	Weight		
ES26	22.8125 x 34.8125 x 3.72 (inches)	28.3 lb	63.2	2.64A
ES33	34.8125 x 34.8125 x 3.72 (inches)	20.8 lb	46.8	1.95A
ES34	34.8125 x 46.8125 x 3.72 (inches)	27.1 lb	56.2	2.34A
ES36	34.8125 x 70.8125 x 3.72 (inches)	40 lb	72.5	3.02A
ES44	46.8125 x 46.8125 x 3.72 (inches)	35.3 lb	65.5	2.73A
ES26M	57 x 177 x 9.54 (cm)	12.9 kg	63.2	2.64A
ES33M	87 x 87 x 9.54 (cm)	9.5 kg	46.8	1.95A
ES34M	87 x 117 x 9.54 (cm)	12.3 kg	56.2	2.34A
ES36M	87 x 177 x 9.54 (cm)	18.1 kg	72.5	3.02A
ES44M	117 x 117 x 9.54 (cm)	16 kg	65.5	2.73A
ES26G	59.5 x 184.5 x 9.54 (cm)	12.9 kg	63.2	2.64A
ES33G	90.8 x 90.8 x 9.54 (cm)	9.5 kg	46.8	1.95A
ES34G	90.8 x 122 x 9.54 (cm)	12.3 kg	56.2	2.34A
ES36G	90.8 x 184.5 x 9.54 (cm)	18.1 kg	72.5	3.02A
ES44G	122 x 122 x 9.54 (cm)	16 kg	65.5	2.73A

NOTE: For custom sizes, see also Custom SkyCeiling wiring diagram



Notice: The LED fixtures are 24V DC ONLY.

AC voltage connected directly to the fixtures
will destroy the lighting system.

Step 1 continued

Fixtures may be arranged in rows or clusters, depending on the installation.

A junction box with 1/2" trade size knock-outs is attached on top corner of each fixture.

- Power leads inside fixture junction box are polarized, red (+) to (+) and black (-) to (-).
- Wire size 18 AWG stranded.

Wiring from fixtures to V DC side of provided power supply is polarized, positive (+) to positive (+) and negative (-) to negative (-):

EcoSlim fixture red "+" to power supply **V+ (RED)**

EcoSlim fixture black "-" to power supply **V- (BLACK)**

Power supply V DC wire size 18 AWG on 40-80w, 14 AWG on 100-600w.

Wire and additional junction boxes from fixtures to power supply provided by others.

Voltage drop will occur over long distances. For appropriate lengths and gauges, see Wire Sizing Chart on page.

Wire gauge must conform to local and national codes.

Step 2: Wiring the power supply to source V AC

Run power to V AC side of the power supply. Power supply V AC wire size 18 AWG.

Line to **ACL (BROWN)**

Neutral to **ACN (BLUE)**

Ground to  **(GREEN/YELLOW)**

Wire gauge must conform to local and national codes.

Install the power switch on the V AC input side of the power supply.

Step 3: Dimming requirements

Contact the Sky Factory if you plan on using a dimming system provided by others.



Notice: Dimming using non-approved systems may permanently damage LED's and will void the warranty!

Wiring a Sky Factory provided dimmer control:

To wire the 0-10V dimmer control (and external relay where specified), refer to wiring diagram included with dimmer and relay and EL001180.

Step 4: Checking the polarity

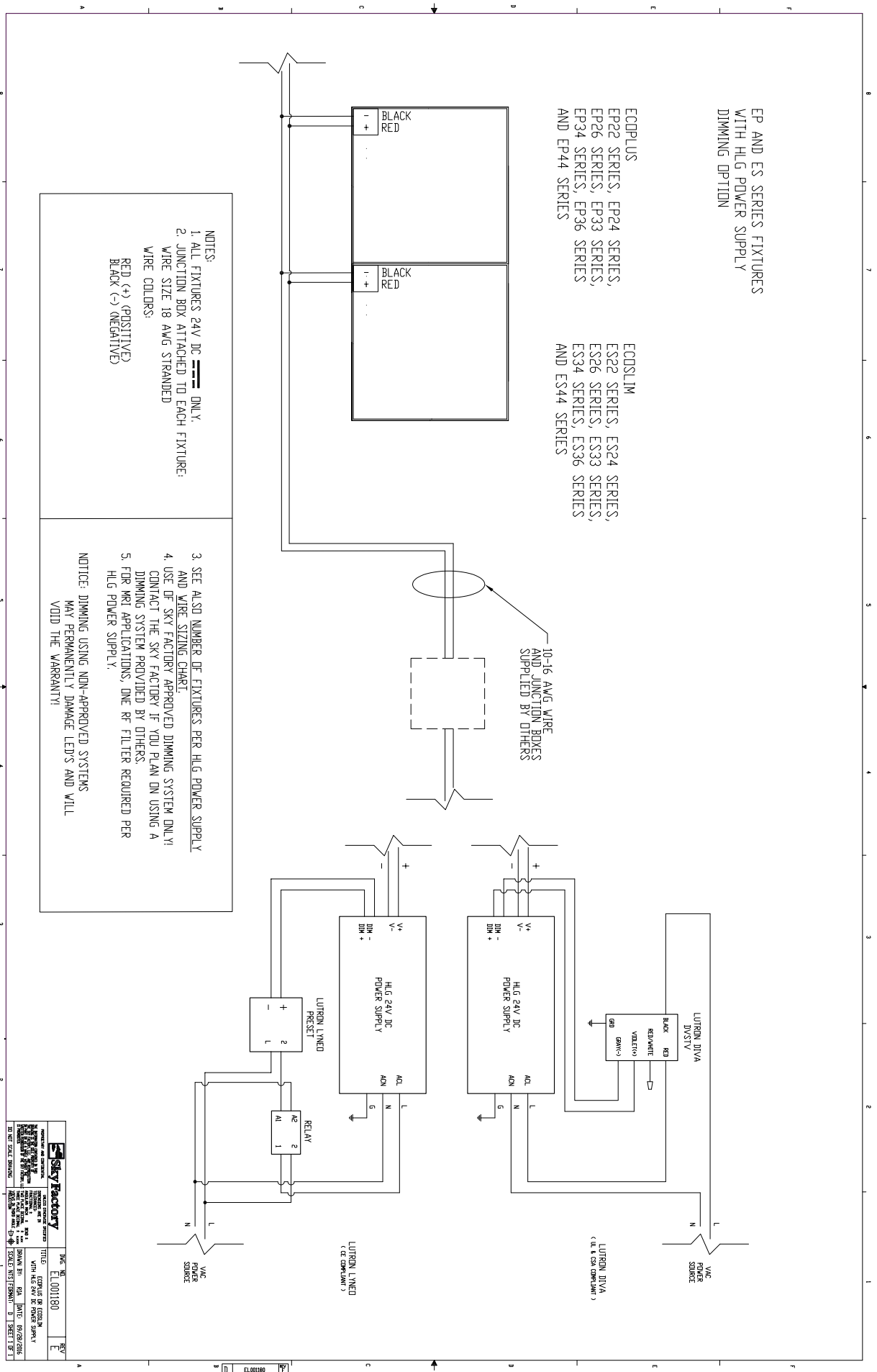


Notice: CHECK THE POLARITY BEFORE TURNING ON POWER. MAKE SURE:

Red wires on the fixtures go to the "+" terminals of the power supply

Black wires on the fixtures go to the "-" terminals of the power supply

IF THE SYSTEM IS WIRED BACKWARD, IT WILL DESTROY THE LED'S!



Number of ES26 Series Fixtures per HLG Power Supply

This table provides information for properly sizing an HLG power supply given the number of fixtures in a given installation.

No. of Fixtures	Amperage [A]	Power [W]	HLG Power Supply 24V DC	Fixtures per Power Supply
1	2.64	63.4	80	1 per 80
2	5.28	126.7	150	2 per 150
3	7.92	190.1	240	3 per 240
4	10.56	253.4	320	4 per 320
5	13.2	316.8	80+320	1 per 80, 4 per 320
6	15.84	380.2	240+240	3 per 240
7	18.48	443.5	600	7 per 600
8	21.12	506.9	600	8 per 600
9	23.76	570.2	240+240+240	3 per 240
10	26.4	633.6	150+600	2 per 150, 8 per 600
Please contact the Sky Factory for additional or custom configurations				

Number of ES33 Series Fixtures per HLG Power Supply

This table provides information for properly sizing an HLG power supply given the number of fixtures in a given installation.

No. of Fixtures	Amperage [A]	Power [W]	HLG Power Supply 24V DC	Fixtures per Power Supply
1	1.95	46.8	60	1 per 60
2	3.9	93.6	120	2 per 120
3	5.85	140.4	185	3 per 185
4	7.8	187.2	240	4 per 240
5	9.75	234.0	320	5 per 320
6	11.7	280.8	320	6 per 320
7	13.65	327.6	Contact Sky Factory	Contact Sky Factory
8	15.6	374.4	240+240	4 per 240
9	17.55	421.2	185+185+185	3 per 185
10	19.5	468.0	600	10 per 600
11	21.45	514.8	600	11 per 600
12	23.4	561.6	320+320	6 per 320
Please contact the Sky Factory for additional or custom configurations				

Number of ES34 Series Fixtures per HLG Power Supply

This table provides information for properly sizing an HLG power supply
given the number of fixtures in a given installation.

No. of Fixtures	Amperage [A]	Power [W]	HLG Power Supply 24V DC	Fixtures per Power Supply
1	2.34	56.2	60	1 per 60
2	4.68	112.3	120	2 per 120
3	7.02	168.5	185	3 per 185
4	9.36	224.6	240	4 per 240
5	11.7	280.8	320	5 per 320
6	14.04	337.0	185+185	3 per 185
7	16.38	393.1	Call Sky Factory	Call Sky Factory
8	18.72	449.3	600	8 per 600
9	21.06	505.4	600	9 per 600
10	23.4	561.6	320+320	5 per 320
Please contact the Sky Factory for additional or custom configurations				

Number of ES36 Series Fixtures per HLG Power Supply

This table provides information for properly sizing an HLG power supply
given the number of fixtures in a given installation.

No. of Fixtures	Amperage [A]	Power [W]	HLG Power Supply 24V DC	Fixtures per Power Supply
1	3.02	72.5	80	1 per 80
2	6.04	145.0	185	2 per 185
3	9.06	217.4	240	3 per 240
4	12.08	289.9	320	4 per 320
5	15.1	362.4	80+320	1 per 80, 4 per 320
6	18.12	434.9	240+240	3 per 240
7	21.14	507.4	600	7 per 600
8	24.16	579.8	320+320	4 per 320
9	27.18	652.3	240+240+240	3 per 240
10	30.2	724.8	240+240+320	3 per 240, 4 per 320
Please contact the Sky Factory for additional or custom configurations				

Number of ES44 Series Fixtures per HLG Power Supply

This table provides information for properly sizing an HLG power supply given the number of fixtures in a given installation.

No. of Fixtures	Amperage [A]	Power [W]	HLG Power Supply 24V DC	Fixtures per Power Supply
1	2.73	65.5	80	1 per 80
2	5.46	131.0	150	1 per 150
3	8.19	196.6	240	1 per 240
4	10.92	262.1	320	1 per 320
5	13.65	327.6	80+320	1 per 80, 1 per 320
6	16.38	393.1	240+240	2 per 240
7	19.11	458.6	240+320	3 per 240, 4 per 320
8	21.84	524.2	600	1 per 600
9	24.57	589.7	240+240+240	3 per 240
10	27.3	655.2	240+240+240	3 per 240
11	30.03	720.7	240+240+320	3 per 240, 4 per 320
12	32.76	786.2	320+320+320	4 per 320
Please contact the Sky Factory for additional or custom configurations				

Wire Sizing Chart

This chart is a guideline for recommended wiring practice.

Applies to 24V DC power only, i.e. from “fixture to power supply.”

Not meant for “V AC to power supply” nor “dimmer to power supply.”

Wire sizes in AWG Conversion chart below.

Distance: Feet (Meters)	AWG for 5A	AWG for 10A	AWG for 15A
20 (6)	18	14	12
30 (9)	16	12	10
40 (12)	14	10	10
50 (15)	12	10	*
60 (18)	12	10	*
80 (24)	10	*	*
100 (30)	10	*	*
* Terminal block wire range #10 - #22 Awg.			

AWG	MM
10	6.271
11	5.156
12	3.302
13	2.629
14	2.088
15	1.652
16	1.308
17	1.039
18	0.823