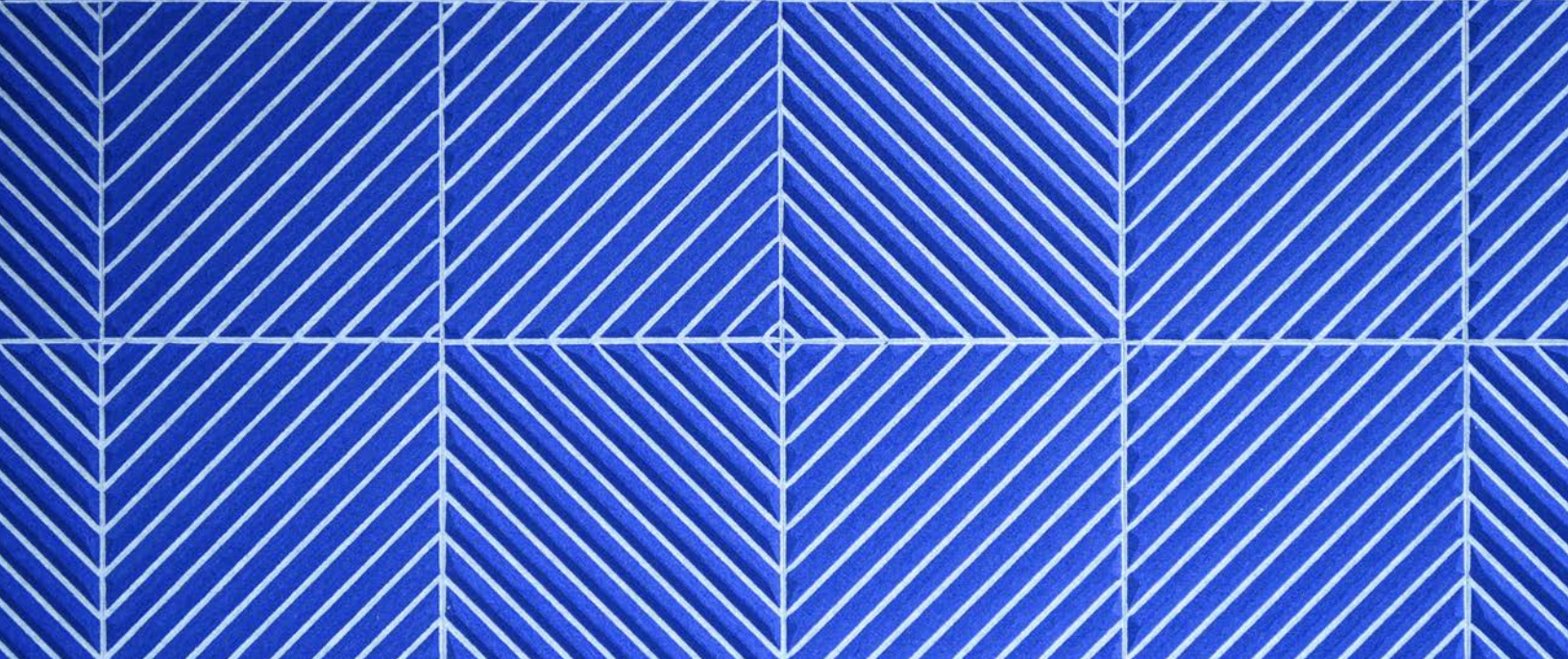


The background of the entire image is a complex, repeating geometric pattern in shades of blue. It consists of numerous thin, parallel lines that intersect to form a series of sharp, triangular and quadrilateral shapes, creating a three-dimensional, crystalline effect.

Carved Tile

by

T U R F™



Carved Tile

DYNAMIC & EASY-TO-INSTALL

Glass walls, concrete floors, and exposed ceilings are the leading cause of poor office acoustics. Most offices want an open office feel, but often fail to recognize that it will come at the expense of clear communication. With a library of tiling patterns and tessellations, TURF's adhesive tiles can increase speech clarity (and sanity) even in the most modern and minimal office environments.

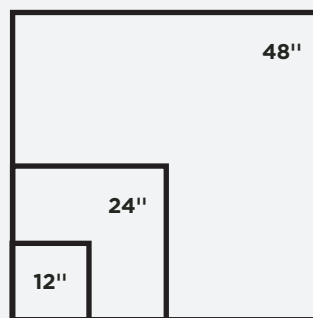
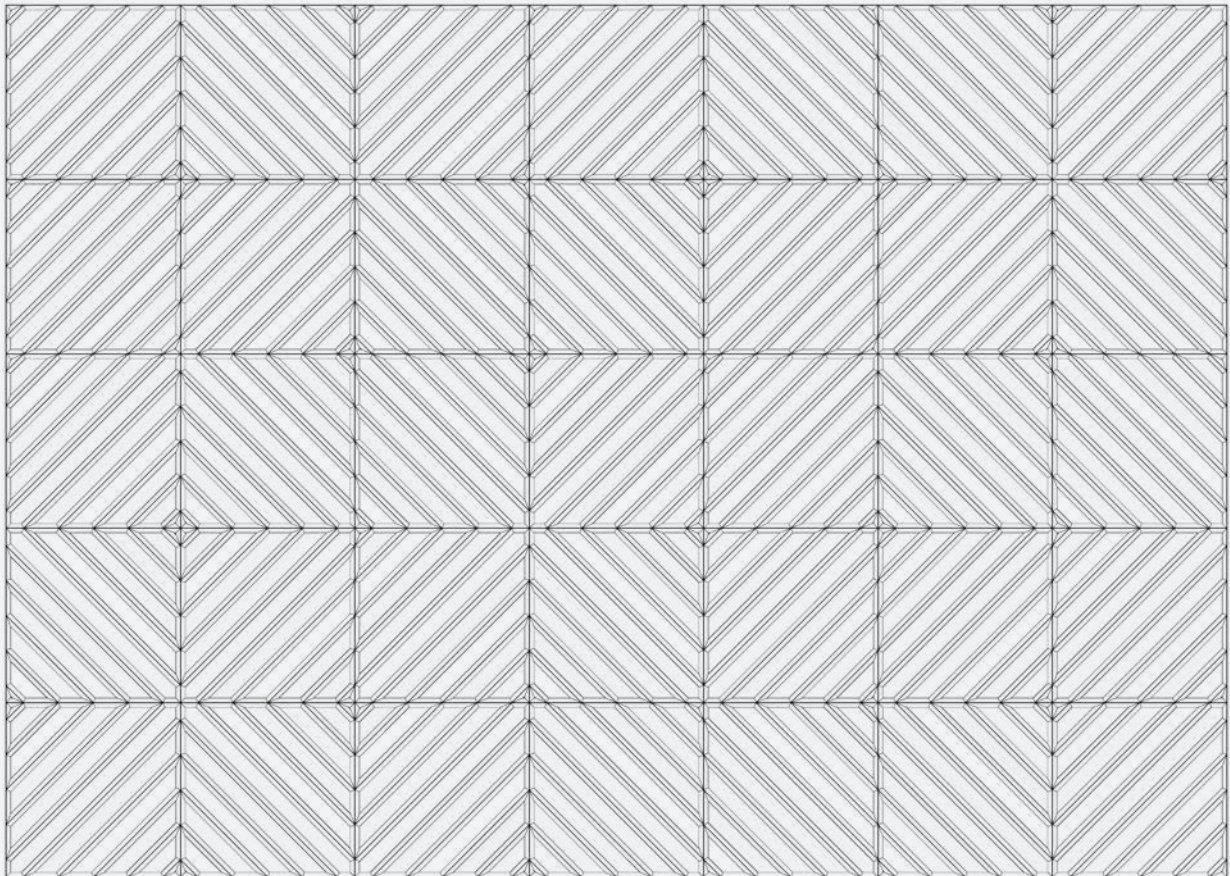
TURF's carved tiles combines the modularity of standard tile options but are enhanced with 'V-channel' patterns carved into the surface. By carving into the surface of the material, multiple colors are revealed creating new aesthetic opportunities, while also increasing the effective surface area of the acoustic absorbing material.

Building off of TURF's research into Pressure Sensitive Adhesives (PSA's), TURF's adhesive tiles will stick to almost any interior surface, and can be applied in seconds to become the most effective decorative solution to your acoustic problems.

Installation

FRONT ELEVATION

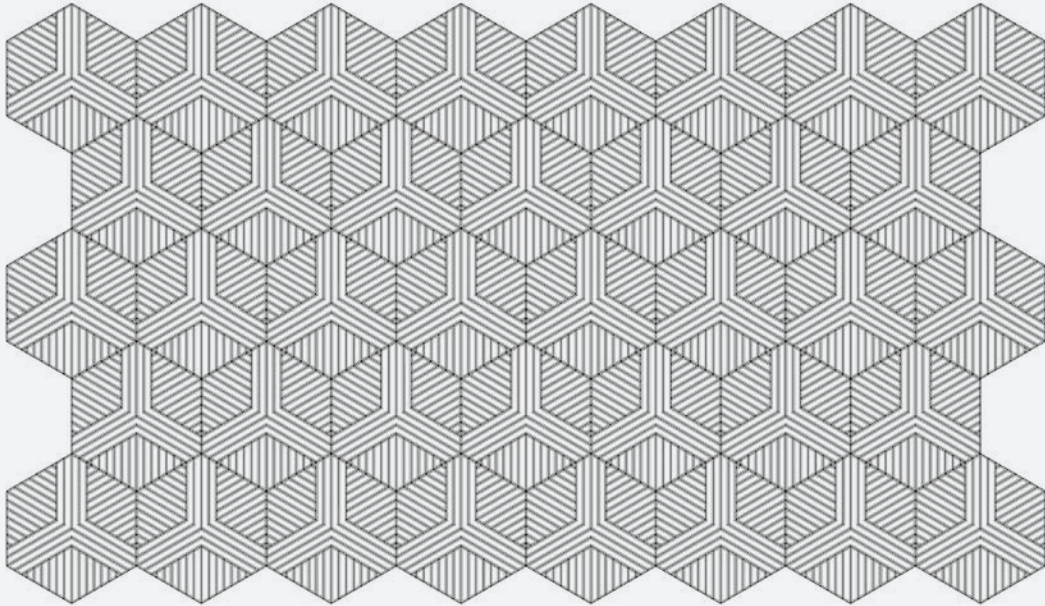
Installation is easy, simply peel off the paper backing and install on a wall. Accuracy of installation is increased with the use of a laser level.



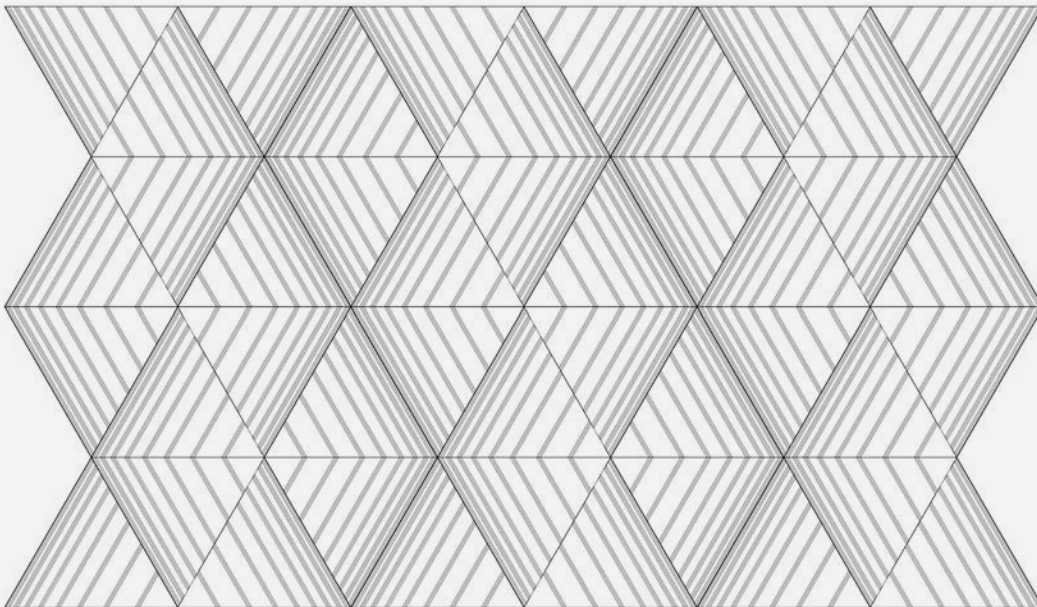
Carved Tiles come in 12", 24", and 48" sizes, and come standard with a pressure sensitive adhesive.

Patterns

1

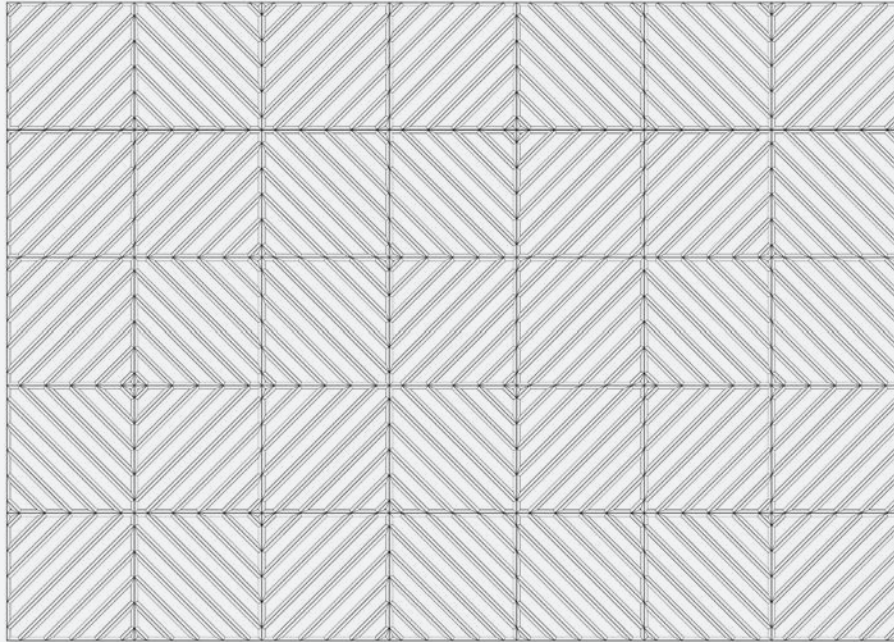


2

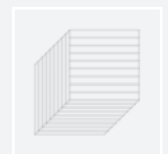
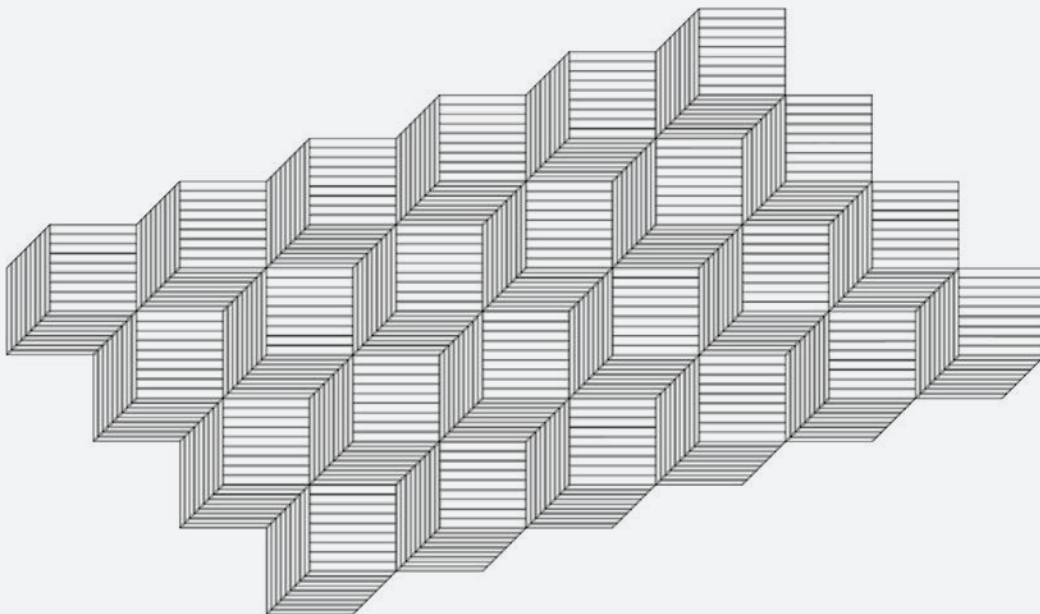


Patterns

3



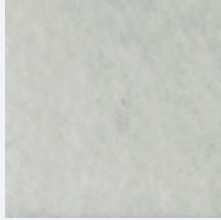
4



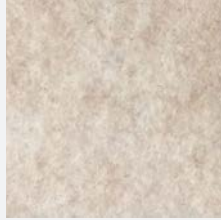
Specifications

PRODUCT NAME	Carved Tile (patent pending)
CONTENT	99% Recycled Polyester Felt
FELT THICKNESS	9mm
SUBSTRATE THICKNESS	3mm OR 9mm
PANEL THICKNESS	12mm
STANDARD SIZE	11"X11"
MAXIMUM SIZE	48"X48"
EDGE OPTIONS	Exposed Felt. Chamfer
COMPONENTS	Pressure Sensitive Adhesive Backing
DURABILITY	Contract
MAINTENANCE	Vacuum occasionally to remove any particulate matter and air-borne debris or dust. Compressed air can be used to dust the material in difficult to reach areas or for large assemblies.
LEAD TIME	Shipped in 4 weeks.
ENVIRONMENTAL	9mm PET felt board is made from over 99% recycled polyester plastic, over 50% of which come from recycled water bottles. TURF is pursuing product transparency for LEED V4 MR Credit 4 Option 1, and MR Credit 3 Option 2 for recycled content. TURF is pursuing a Declare Label for this product.
VARIATION	PET Felt uses a traditional 'felting' process to create it's panels. This often results in a pleasing heathered effect, where multiple tones are present in the fiber. Slight and consistent variations in color should be expected when using this sustainable material.
ACOUSTICS	ASTM C 423: NRC [500hz] = .76 NRC [1000hz] = 1.00
FIRE RATING	UL tested ASTM E-84: Class A

9MM Felt Colors



5 WHITE



1 CREAM



4 LIGHT GREY



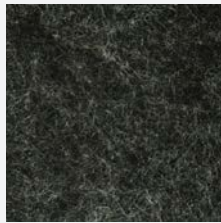
48 LIGHT BROWN



32 BROWN



38 MATTE GREY



6 CHARCOAL



7 BLACK



45 YELLOW



20 MANGO



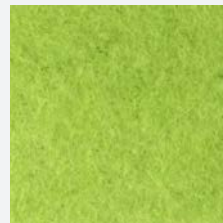
42 ORANGE



16 RED



39 LAVENDER



47 LIME



14 GREEN



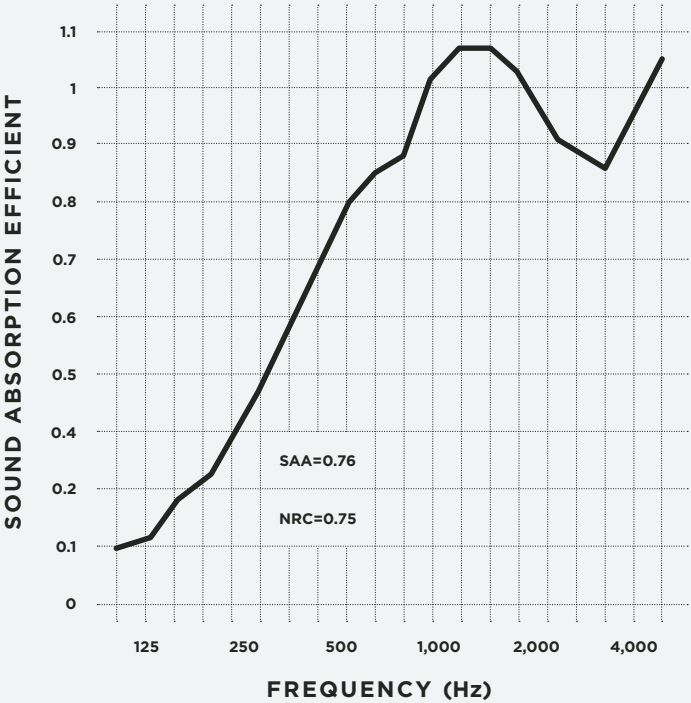
25 LIGHT BLUE



29 DARK BLUE

Acoustic Testing (ASTM C 423)

FREQUENCY (Hz)	SOUND ABSORPTION COEFFICIENT
32	.03
40	.01
50	-.02
63	-.07
80	.06
100	.09
125	.12
160	.20
200	.24
250	.33
315	.45
400	.59
500	.76
630	.85
800	.89
1,000	1.00
1,250	1.06
1,600	1.06
2,000	.99
2,500	.89
3,150	.83
4,000	.94
5,000	1.04
6,300	1.00
8,000	1.05
10,000	1.07
12,500	1.07



TEST ARRANGEMENT

PET Acoustic panel +100mm air layer (Filled with 50mm rock wool board).

Adhesive Warranty

SHELF LIFE STATEMENTS ON SELECT CONVERTER PRODUCTS

Limitation of Liability for Adhesive products used by TURF Design

The technical information, recommendations and other statements contained in this document are based upon tests or experience that our adhesive product believes are reliable, but the accuracy or completeness of such information is not guaranteed.

Many factors beyond our adhesive product's control and uniquely within user's knowledge and control can affect the use and performance of it's particular application. Given the variety of factors that can affect the use and performance of this product, user is solely responsible for evaluating the product and determining whether it is fit for a particular purpose and suitable for user's method of application.

Unless an additional warranty is specifically stated on the applicable product packaging or product literature, our adhesive manufacturer warrants that each of it's products meets the applicable product specification at the time it ships out. Our adhesive manufacturer **MAKES NO OTHER WARRANTIES OR CONDITIONS, EXPRESS OR IMPLIED, INCLUDING, BUT NOT LIMITED TO, ANY IMPLIED WARRANTY OR CONDITION OF MERCHANTABILITY OR FITNESS FOR A PARTICULAR PURPOSE OR ANY IMPLIED WARRANTY OR CONDITION ARISING OUT OF A COURSE OF DEALING, CUSTOM OR USAGE OF TRADE.**

If our adhesive product does not conform to this warranty, then the sole and exclusive remedy is, at our adhesive manufacturer's option, replacement of the product or refund of the purchase price.

Except where prohibited by law, the adhesive manufacturer will not be liable for any loss or damage arising from the product, whether direct, indirect, special, incidental or consequential, regardless of the legal theory asserted, including warranty, contract, negligence or strict liability.