

Hampshire HAM-N-SW



Classic single-ended tub

- The more generously proportioned version of the Wessex
- Made from ENGLISHCAST™
 - One piece casting of rare volcanic limestone and resin
 - Harder and more durable than acrylic
- Easy clean high gloss finish
- Exterior can be painted, faux finished or stenciled
- 25 year warranty

Recline in single-ended luxury. Shown with polished chrome ball & claw feet - FT-HAM-PC



Options to be Specified

Tub:

- **No faucet holes**
Suitable for freestanding, wall or deck mounted faucets. Victoria & Albert warranty installers drilling custom faucet holes on-site.

Feet: (see feet page for more information)



White
Metal

FT-HAM-WH



Polished
Chrome

FT-HAM-PC



Polished
Brass

FT-HAM-PB



Brushed
Nickel

FT-HAM-BN



Polished
Nickel

FT-HAM-PN



Oil Rubbed
Bronze

FT-HAM-ORB



White
ENGLISHCAST™

FT-HAM-SW

Recommended Drain:

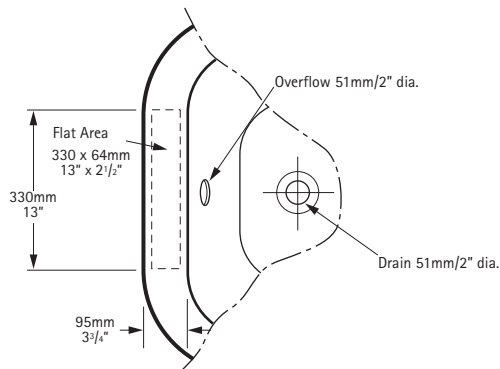
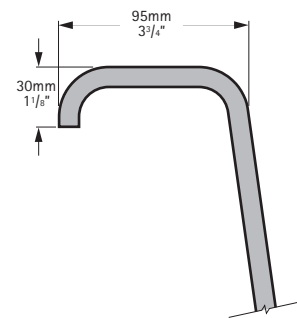
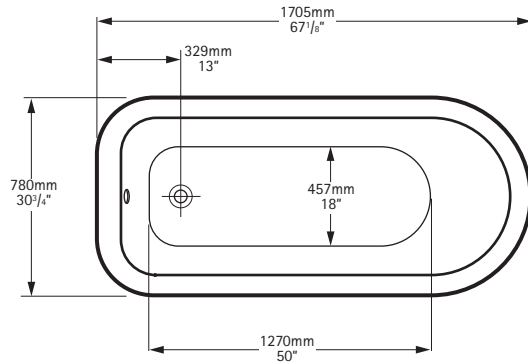
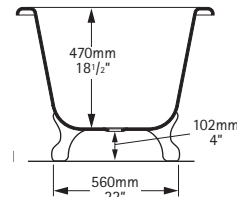
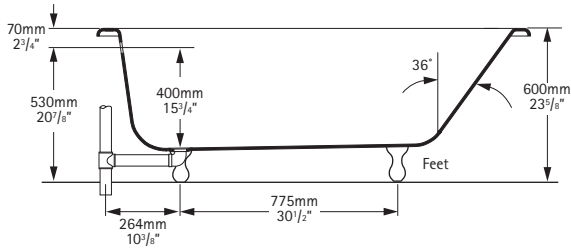
Standard Drain - STD-UNI-XX

Note: For product specifications please see over



Hampshire HAM-N-SW

Classic single-ended tub



General specifications for Hampshire tub

Installed size	67 1/8" x 30 3/4" x 23 5/8"
Weight	111lbs
Weight with water	551lbs
Gallons to overflow	53 gallons
Bathing well at sump	50" x 18"
Bathing well at rim	60 3/8" x 24 3/8"
Water depth to overflow	15 3/4"

Notes

Refer to installation instructions supplied with tub for additional information. The feet supplied support sump of tub. No additional support required.

Fittings (faucets & drain assembly) not included and must be ordered separately. If installing deck mounted hardware refer to 'drilling faucet holes' instructions before installation.

Important

Dimension of fixtures are nominal and may vary within the range of tolerances established by ANSI standard A112.19.4M.

These measurements are subject to change or cancellation.

No responsibility is assumed for use of superseded or void leaflet.