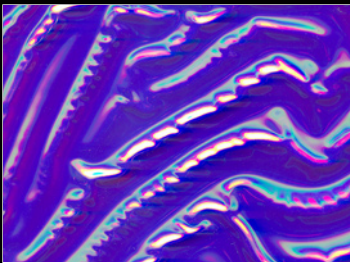


JOHN  
BLAZY  
DESIGNS

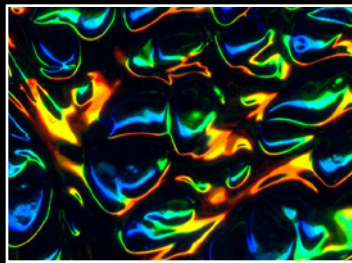


## Dichrolam Sea Textures™

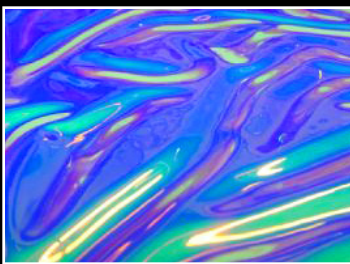
John Blazy Designs introduces our Dichrolam Sea Textures™ series. Visually rich in color and textural depth, these vibrant and rich materials are protected by a layer of glass or plastic. The Dichrolam Sea Textures™ series demands attention without wearing out its welcome. The color and texture delights both the short term and long term occupier of its space. These products have been successfully incorporated in a number of market segments and applications. You can find John Blazy Designs' Dichrolam Sea Textures™ series in commercial, healthcare, restaurant, hospitality, gaming, cruise ship, and residential settings.



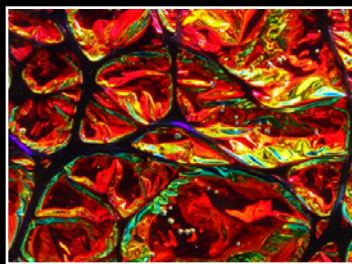
Crystal Sea



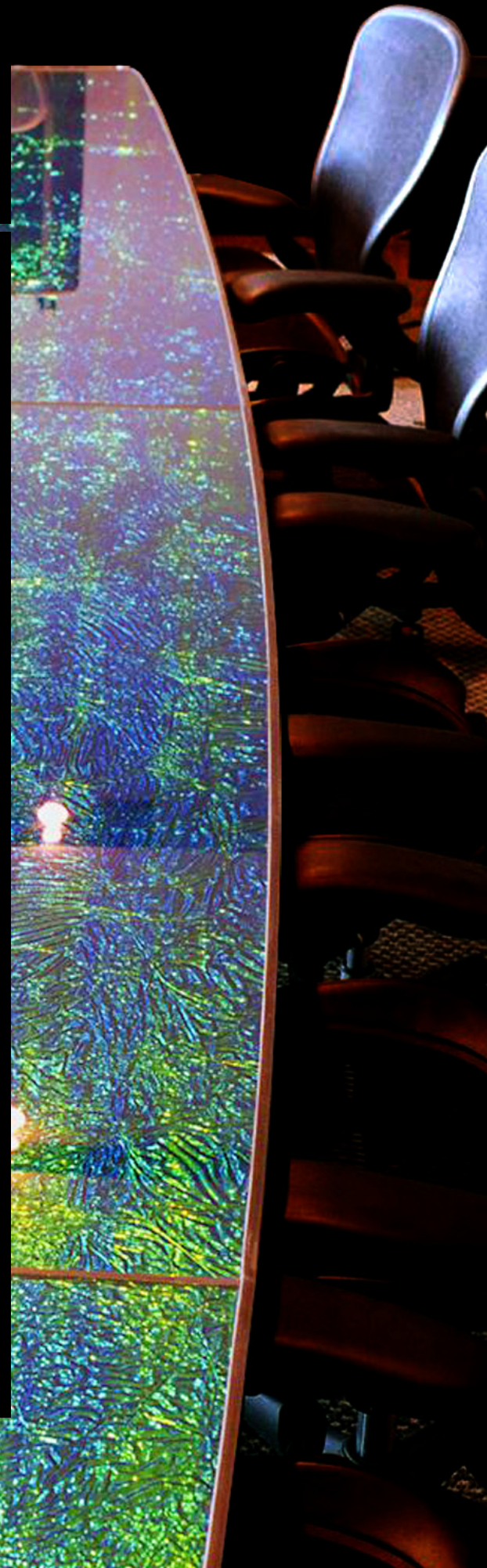
Black Sea



Caribbean



Red Burl



# Dichrolam Sea Textures™

Dichrolam Crystal Sea Green. Skylight panels at Levine Children's Hospital, Charlotte, NC.

## Technical Information (Interior and Building Envelope)

	Material	Safety	Thickness	Size
Crystal Sea	Plastic and Glass	Temp or Lami IGU	¼" – 1"	52" x 120"
Black Sea	Plastic or Glass	Temp or Lami	¼" – 1"	50" x 120"
Caribbean	Plastic or Glass	Temp or Lami	¼" – 1"	52" x 120"
Red Burl	Plastic or Glass	Temp or Lami	¼" – 1"	42" x 72"

Edge Work: We offer seamed or flat polish edge work. Insulated Glass Units are available. Plastics include Acrylic and Polycarbonate, both available with scratch-resistant hard coating (AR).

# Dichrolam Sea Textures™

## Cost Summary (US Funds)

There are several factors that determine the price of these products. These factors are material thickness, edge work, total square footage (SF), shape, warranty length, and material used.

Crystal Sea Red/Green - \$50 to \$65 SF

Black Sea - \$60 - \$80 SF

Caribbean - \$60 - \$80 SF

Red Burl - \$80-\$95 SF

## Cleaning Instructions

For our glass based products, we recommend using ammonia based cleaners. If the base substrate is plastic then we recommend plastic based compatible cleaners. Isopropyl alcohol is strongest solvent recommended for plastic based Dichrolam – no MEK, acetone or similar solvents. Abrasive cleaners, strong ammonia or alkaline solutions should always be avoided unless glass based products are used.

## Warranty

We offer a one year limited warranty on these products. For terms and conditions please see our Dichrolam™ Statute of Limitations.

## Opaque Applications

Table Tops, Transaction Tops, Back Splashes, Opaque Dividers, Wall and Accent Tiles

## Translucent Applications (Crystal Sea only)

Table Tops, Transaction Tops, Skylights, windows, translucent dividers, transoms, side lites, hand rails, and more.

## Installation Instructions

The Dichrolam Sea Textures™ series installation procedures are like any other glazing product. In the case of edge lighting and back lighting these products, we will add a light diffuser to the glass make up to enhance the lighting affects. We highly recommend that the light diffuser be part of the glass make up rather than a separate item.

Dichrolam Caribbean.



(216) 272-3948, Fax (216) 749-0692  
[www.johnblazydesigns.com](http://www.johnblazydesigns.com)

Please contact our Sales Manager, Igor Beaufils  
(419) 450-5051, [igorglass@sbcglobal.net](mailto:igorglass@sbcglobal.net)