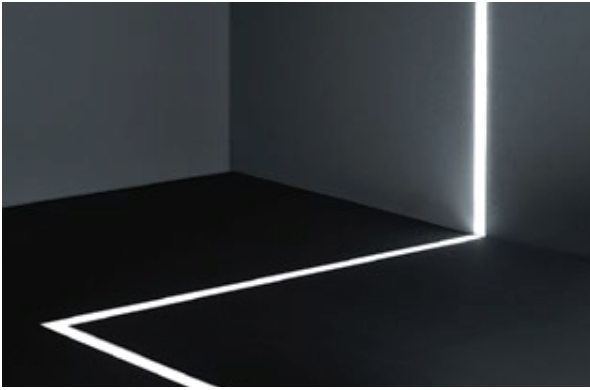


Project name: _____

Type: _____



Inground walk over fitting designed to create paths of light with perfect uniformity and unlimited length. Suitable for exterior applications.

Luminaire characteristics: Luminaire only.

Power input: 2.1W /ft

Lumens: 99lm/ft (delivered for 3000K)

Luminaire efficacy: 47lm/W (for 3000K)

Source: White LED (LM-80 tested)

3000K: 80CRI,

4000K: 80CRI

Lumen maintenance: >70% of initial lumens at 50 000 hours (L70),(LM-79 tested).

Optics: Wide distribution for general lighting. The diffuser provides uniform distribution without visible leds imaging, light lines or shadows.

Material:

Body: Extruded anodized aluminum body, recessed box and fixing base

Diffuser: 15mm thick frosted tempered glass.

Electrical: See remote power supply options on page 3

Mounting: Inground installation using recessed box. Supplied with 6" long neoprene cable with cable gland. Separate waterproof wiring box to be provided by the contractor. Insure 12" of gravel minimum for appropriate drainage

Finish: Anodized aluminum

Weight:

S.7016: 7lbs (3.15kg)

S.7011: 11.8lbs (5.35kg)

S.7012: 17lbs (7.7kg)

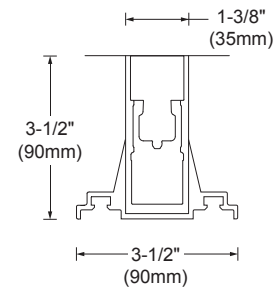
Max load capacity: 1100Lbs (500kg)

Contact temperature: Less than 39°C (102°F)

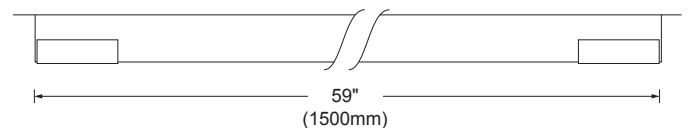
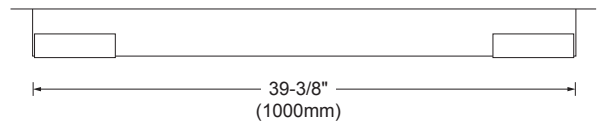
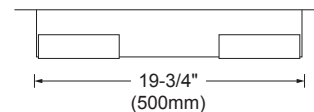
Warranty: 5 year limited warranty.

Certification: cULus listed for wet location

Ratings: IP67, IK10.



SIDE VIEW



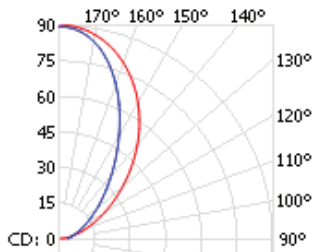
FRONT VIEW

Project name: _____

Type: _____

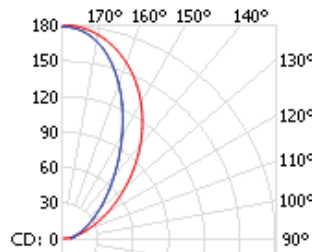
TECHNICAL DATA

LOAD (W)	CCT (K)	CRI	OPTIC	DELIVERED LUMENS (lm)	LUMINAIRE EFFICACY (lm / w)	CENTER BEAM CANDLE POWER (cd)	MODEL
3.5W	3000K	80	General lighting	165	47	89	S.7016W
7W				330	47	179	S.7011W
10.5W				495	47	269	S.7012W



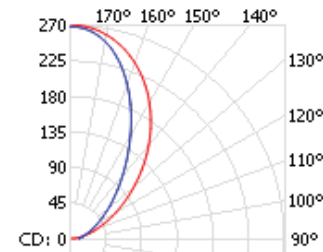
■ - 0° H
 ■ - 90° H

S.7016W - 3000K - 80 CRI



■ - 0° H
 ■ - 90° H

S.7011W - 3000K - 80 CRI

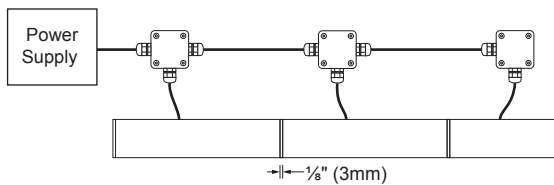


■ - 0° H
 ■ - 90° H

S.7012W - 3000K - 80 CRI

INSTALLATION AND WIRING

Single units can be combined to obtain a dark spot free continuous run. Each luminaire must be wired back to the remote power supply (No fixture chain wiring). Please refer to instruction sheet for more details



Project name: _____

Type: _____

ORDERING INFO

MODEL	FINISH	
<p>MODEL</p> <p><input type="radio"/> S.7016W- 1'8"(0.5m), 3000K</p> <p><input type="radio"/> S.7016N- 1'8"(0.5m), 4000K</p> <p><input type="radio"/> S.7011W- 3'3½"(1m), 3000K</p> <p><input type="radio"/> S.7011N- 3'3½"(1m), 4000K</p> <p><input type="radio"/> S.7012W- 4'11"(1.5m), 3000K</p> <p><input type="radio"/> S.7012N- 4'11"(1.5m), 4000K</p>		<p>FINISH</p> <p><input type="radio"/> 13 - Anodized aluminum</p>
<p>REMOTE POWER SUPPLY OPTION</p> <p>REMOTE POWER SUPPLY OPTIONS (TO BE ORDERED SEPARATELY) Requirement : 2.1W/ft, 24VDC</p> <p><input type="radio"/> 4444-0024-025-UNV-ND</p> <p><input type="radio"/> 4448-0024-150-UNV-D10</p> <p><input type="radio"/> 4548-0024-072-UNV-D10</p> <p><input type="radio"/> 4551-0024-075-UNV-ND</p> <p><input type="radio"/> 4551-0024-080-120-LTE</p> <p><input type="radio"/> 4546-0024-200-2C-UNV-ND</p>		

REMOTE POWER SUPPLY OPTIONS
(TO BE ORDERED SEPARATELY)

Watts	Maximum length	Voltage	Rated	Dimming protocol	Box dimensions	Max distance 18AWG	Code
25	Up to 11'6" (3.5m)	120-277V	Indoor	None	6" X 4" X 3" (152 X 102 X 76mm)	30ft (9m)	4444-0024-025-UNV-ND
150	Up to 68'11" (21m)	120-277V	Indoor	0-10V	10" X 8" X 4" (254 X 203 X 102mm)	25ft (7.5m)	4448-0024-150-UNV-D10
72	Up to 32'10" (10m)	120-277V	Outdoor	0-10V	4¼" X 7⅞" X 3" (108 X 178 X 76mm)	30ft (9m)	4548-0024-072-UNV-D10
75	Up to 34'5½" (10.5m)	120-277V	Outdoor	None	11¼" X 3" X 1¾" (285 X 75 X 42mm)	30ft (9m)	4545-0024-075-UNV-ND
80	Up to 36'1" (11m)	120V	Outdoor	Leading and trailing edge (ELV and TRIAC)	14" X 5" X 2" (356 X 127 X 51mm)	30ft (9m)	4551-0024-080-120-LTE
200	Up to 45'11¼" Per channel MAX 91'10½"(28m)	120-277V	Outdoor	None	12" X 4½" X 2¾" (305 X 114 X 60mm)	30ft (9m) Per channel	4546-0024-200-2C-UNV-ND