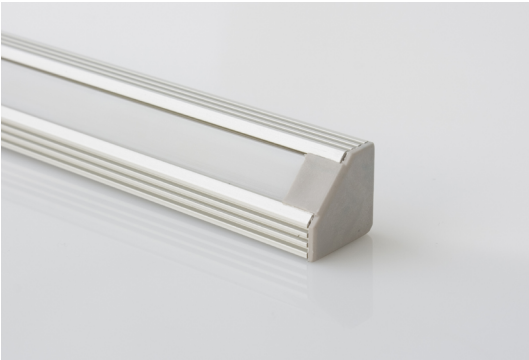


Flex 45 Degree Channel



Client:

Project:

Type:

Order Code:

Quantity:

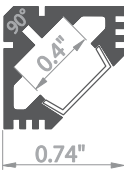
The **Flex 45 Degree Channel** is an anodized aluminum channel which allows for a 45 degree mounting of Flex II products, in conjunction with optional lenses.

Compatible with: Flex II Interior

Specifications

Length	3.28' (1m), Cut to length as needed
Material	Double Anodized Aluminum, Polycarbonate Lenses
IP Rating	IP22, Dry Location
Area Temperature	32° F - 104° F (0° C - 40° C)
Warranty	3 Years
Mounting	via Flex 45 Degree Zinc Mounting Bracket (Sold Separately)
Weight	1.37 lbs. (0.62 kg)
Dimensions	L: 39.3" (1m) W: 0.74" (1.9cm) H: 0.74" (1.9cm)

Dimensions



Flex 45 Degree Channel

Order Code

FLK 45D: Flex 45 Degree Channel Extrusion, 1m (3.28')

Related Components

FLK MFC: Clear Lens 1m (3.28')



FLK MFL: Frosted Lens 1m (3.28')



FLK MOL: Opal Lens 1m (3.28')



FLK 45D EC: End Cap



FLK 45D ECH: End Cap with Hole



FLK 45D ZMB: 45 Degree Zinc Mounting Bracket



FLK 45D CF: 45 Degree Conductive Fastener

