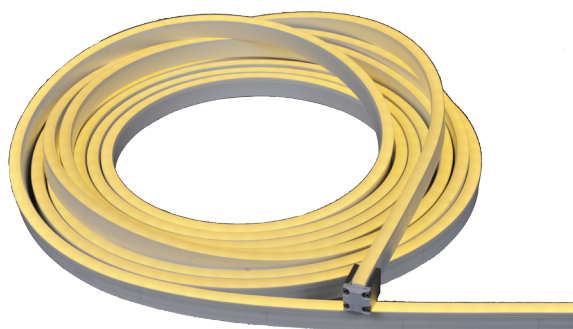


Flex Tube SC

Client:	
Project:	
Type:	
Order Code:	
Quantity:	



Flex Tube SC is a single color, outdoor rated, flexible LED tube. It features a bend diameter of as little as 5", can be cut to length every 4", and features an IP68, submersible rating, suitable for any exterior application. It is sold in spools of 32' (10m), and is, impact, UV, and saltwater resistant.

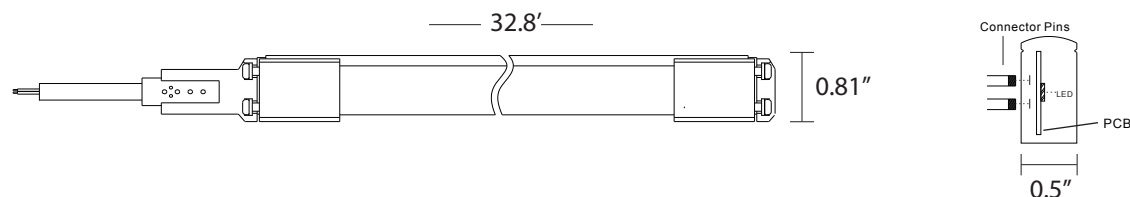
SPECIFICATIONS

Color	2700K, 3000K, 3500K, 4000K, Red, Green, Blue
Beam Angle	160°
Max Fixture Runs	32' (10m)
Power Consumption	3.75W Per Foot, 120W per 32' (10m) Spool
Lumens Per Foot	120
Cut & Connect Joints	Located Every 4"
Housing	UV Coated, Flexible PVC Jacket + Silicone Top
Installation Temperature	32°F to 113°F (-0°C to 45°C)
Operating Temperature	-40°F to 131°F (-40°C to 55°C)
Operating Voltage	24VDC
Dimming	via DMX-512, 1 Channel Per Spool / Section
Connectors & Hardware	All Accessories Sold Separately Including First Cables and End Caps, See Page 2
Ingress Protection	IP 68, Wet Location / Submersible Up To 10' (3m)
Impact Resistance	IK 08, Up 5 Joule Impact Energy Protection
Warranty	3 Years
Weight	7.6 lbs (3.5 kg)
Dimensions	W 0.5" x H 0.81" x L 32.8' (12.7 mm x 20.6 mm x 10m)

Certifications



DIMENSIONS



Flex Tube SC

Client:	
Project:	
Type:	
Order Code:	
Quantity:	

ORDER CODES (*Special Order Item)

FTB - 12 - AA - N

All Accessories Sold Separately Including First Cables and End Caps, See Below

- A** - 2700K*
- B** - 3000K
- D** - 3500K*
- E** - 4000K
- N** - Red*
- P** - Green*
- Q** - Blue

- 3** - Flex Tube SC 32.8' Spool (10m)
- 4*** - Flex Tube SC Injection Molded Side Mount Cable 32.8' Spool (10m)
- 5*** - Flex Tube SC Injection Molded Rear Mount Cable 32.8' Spool (10m)

RELATED COMPONENTS

APS-480-24	Non-Dim 24VDC 480W 120/240V UL Din Rail Power Supply, Maximum Load - 3 x 10m Runs
APS-240-24	Non-Dim 24VDC 240W 120/240V UL Din Rail Power Supply, Maximum Load - 1 x 10m Run
DPW-111-FA	AL Driver 8 RGBW 24V - 24V Power + DMX Driver, 120VAC or 240VAC Input / 1 Spool Maximum
AL-150-24	Dry Location 24VDC 150W Transformer, 120 or 240VAC Input / 1 Spool Maximum for Non-Dim Use
CLG-150-24	Wet Location 24VDC 150W Transformer, 120V-277VAC Input / 1 Spool Maximum for Non-Dim Use
FTUBESCFC	Flex Tube SC First Cable Kit (FTB Only) - IP68, 300mm (12"), Includes Gasket + Screws
FTUBESCLC	Flex Tube SC Link Cable (FTB Only) - IP68, 300mm (12"), Includes Gasket + Screws
FTUBESCMC	Flex Tube SC Seamless Mid Connector (FTB Only)
FTUBEEC	Flex Tube End Cap Kit - IP68, Includes Gasket + Screws
FTUBELCH1M	Flex Tube Self Lock Mounting Channel 1m (3.28') - Aluminum, Includes 3 Clasps + 4 Screws
FTUBELCH5CM	Flex Tube Self Lock Mounting Channel 5cm (2") - Aluminum, Includes 1 Clasp + 1 Screw
FTTK2	Flex Tube Install Tool Kit - Includes Cutter, Insert Assist, and Carrying Case

Flex Tube SC

Client:	
Project:	
Type:	
Order Code:	
Quantity:	

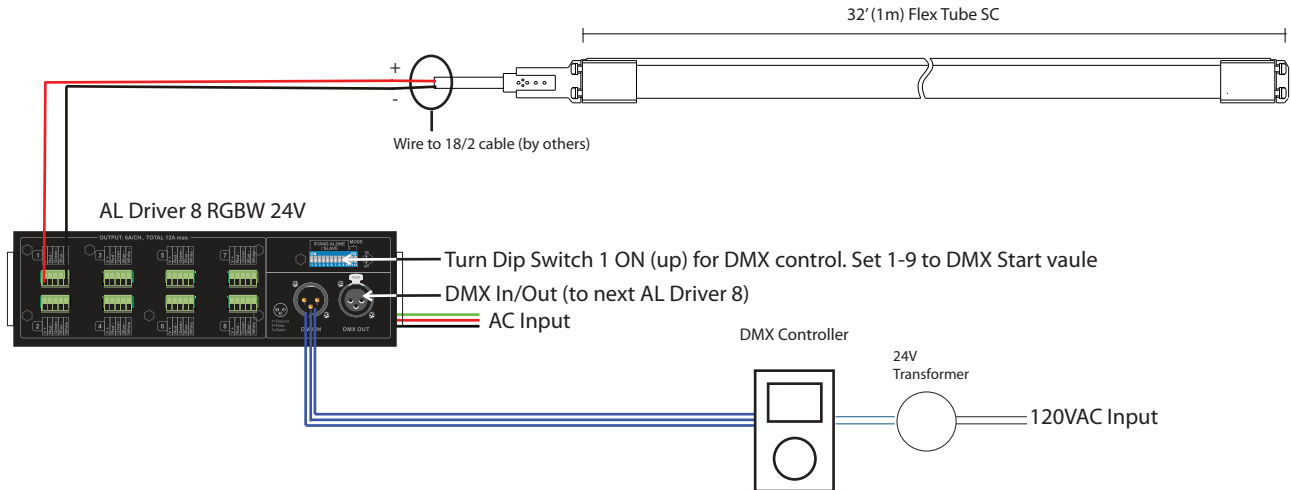
WIRING (DMX Dimming)

Maximum DC cable lengths - solid cable or higher, to be provided by others:

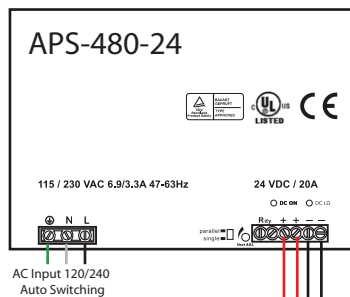
18/2 : 50' to each 32' run

14/2 : 120' to each 32' run

12/2 : 200' to each 32' run



WIRING (Non-dim)



Maximum DC cable lengths - solid cable or higher, to be provided by others:

18/2 : 50' to each 32' run

14/2 : 120' to each 32' run

12/2 : 200' to each 32' run

