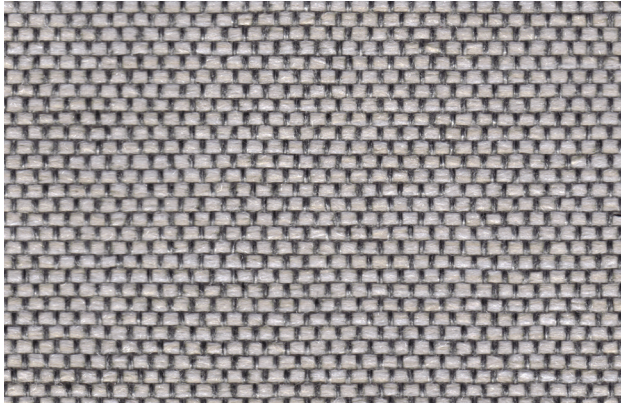
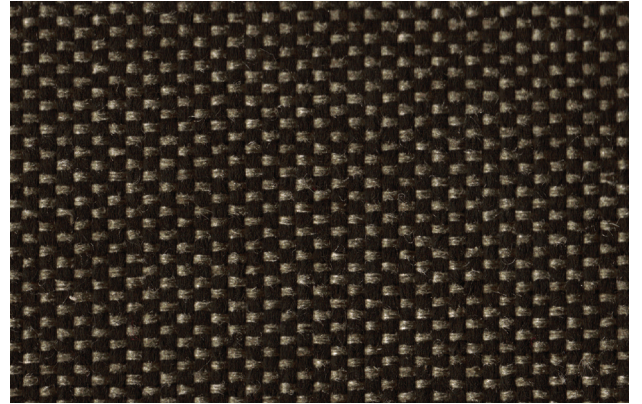


## FABRIC 2A

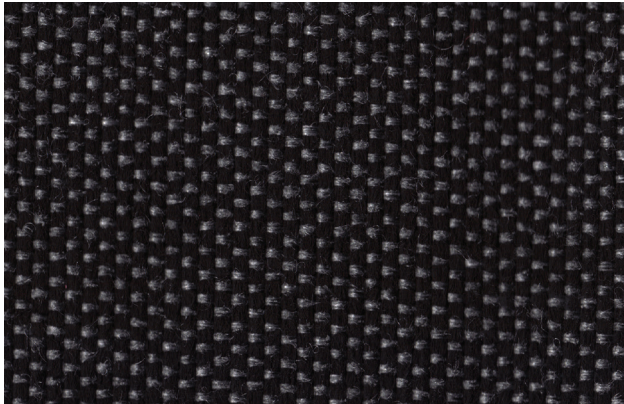
---



GREY BRICK



GODIVA



BLACK PEPPER

# FABRIC 2A

---

Viscose has a silk-like aesthetic with superb drape and feel and retains its rich brilliant colours. Its cellulosic base contributes many properties similar to those of cotton or other natural cellulosic fibres. Polyester provides improved wrinkle resistance, durability, high color retention and its low absorbency allows the fiber to dry very quickly. The blend of polyester and viscose contributes durability, resiliency and shape retention.

**Content:**

67% Polyester

33% Viscose

- Weight: 405 g/m<sup>2</sup> ±5%
- Width: 130 cm
- Abrasion Resistance: 30,000 cycles
- Flammability: BS EN 1021 - 1
- Light Fastness: 6 (ISO 105 - B02)
- Fastness to Rubbing: 4 Wet/Dry
- Maintenance: Vacuum regularly.  
Wipe clean with a damp cloth or use upholstery shampoo.

\* Swatches shown are a representation of colour only and may not match actual material.