

CORE 200 SX

pendant

PROJECT

Job _____	Notes
Type _____	
Part # _____	

SPECIFICATIONS

- Source Xicato XTM LED module - up to 2000 lumens
- C.C.T. 2700K, 3000K, 3500K or 4000K
- Color Consistency 1x2 SDCM (MacAdam) along BBL, CCT +/- 40K to 70K, Duv +/- .001
- CRI (Ra) 83 or 98
- Driver / Location Included / Remote mount or deep canopy options
- Dimming 0-10V or phase dimming to 10% standard; DALI, DMX and 1% dimming available
- Input Voltage 100 to 277VAC, phase dimmable versions are 120VAC only
- Power Up to 24 watts max, depending on LED module / driver
- Reflector 20°, 40° or 60° - field replaceable without tools
- Material CNC machined aluminum with stainless steel hardware
- Finish Powder coat - TGIC polyester for exterior and interior use
- Weight 1.6 lb. [0.7 kg]
- Location Listed for Wet & Damp locations
- Approvals ETL Listed to UL 1598, 2108, 8750 and CSA C22.2# 9 & #250.0
- L80 Life > 50,000 hours at 80% lumen maintenance based on IESNA LM-80-08
- Warranty Lifetime Limited Warranty - see warranty for details
- IES Files LM-79-08 IES files available at www.v2LightingGroup.com/downloads
- Modifications Any modification or customization is possible - consult factory



ORDERING LOGIC

Model	Driver		Mounting		Output	CRI *	C.C.T.	Reflector	Shell Color	Suspension	Options
	Location	Dimming	Location	Location							
C2SP											
	R =Remote D =Deep Canopy	N =None P =Phase V =0-10V Z =Other	D =Damp W =Wet		07 =700 lm 10 =950 lm 13 =1300 lm 20 =2000 lm	83 =83 98 =98*	27 =2700K 30 =3000K 35 =3500K 40 =4000K	20 =20° 40 =40° 60 =60°	XX (see chart on page 4) ZZ =Custom	BK =Black Cord WH =White Cord CB =Clear Cord CC =Colored Cord add /AC to any cord for aircraft cable	RS## =Rigid Stem SS## =Swivel Stem ## = length in inches

* 98 CRI not available in 2000 lm

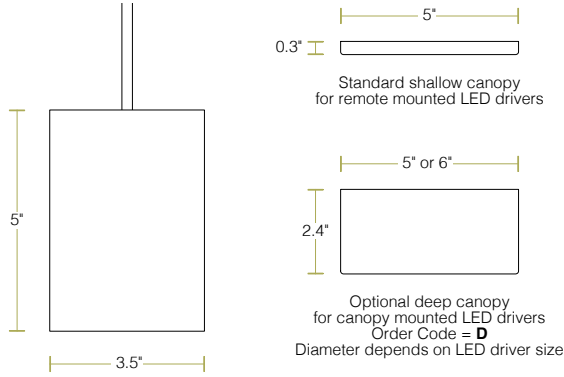
Example Part Number: **C2SP-RND-13832740-S3BK**

CORE 200 SX Pendant - Remote Driver, No Dimming, Damp Location - 1300 lm, 83 CRI, 2700K, 40° Reflector - S3 Red Shell, Black Cord

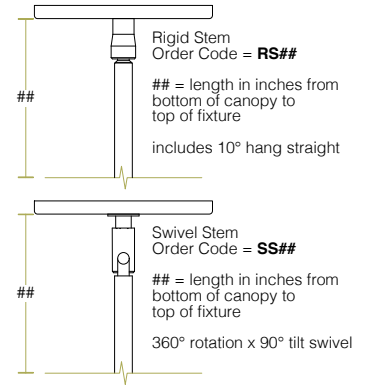
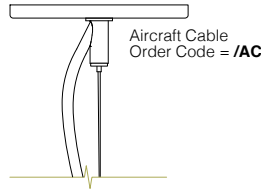
CORE 200 SX

pendant

DIMENSIONS



Standard cable length = 6'
Cable length is field adjustable
To order longer cable put length in options section at end of part number
All canopies fit standard 3.5" and 4" round and octagonal junction boxes
Not to scale, dimensions are nominal
Consult factory for CAD drawings



LED OPTIONS

Reflector Option	LES ¹	CRI	LED Specifications		
			Lumens ^{2,3,4}	Wattage ⁵ (W)	Efficacy ⁶ (lm/W)
20°, 40° & 60°	19mm	Ra = 83 ± 3	700	5.6	129
			950	8.2	118
			1300	11.7	111
			2000	19.5	102
		Ra = 98 R9 ≥ 90 R15 ≥ 95	700	7.4	97
			950	10.9	89
		1300	15.6	83	

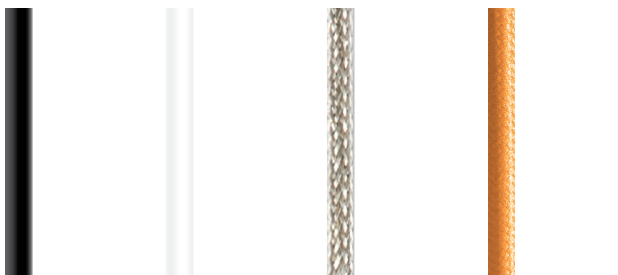
- ¹ LES: Light Emitting Surface diameter
- ² ±10%
- ³ Source lumens - see photometrics on page 3 for LOR to calculate delivered lumens
- ⁴ Higher lumen outputs are available in CORE / QUBE 300 and 400 series
- ⁵ Maximum luminaire wattage including LED driver = LED wattage x 1.2
- ⁶ Higher efficacies are available via lower drive currents - consult factory

CONTROL OPTIONS

Standard LED Drivers* (included in base price)	Order Code V = 0-10V dimming to 10% Order Code P = Phase dimming to 10% Compatible with both forward and reverse phase dimmers
Optional LED Drivers*	eldoLED 0-10V, DALI, or DMX dimming to 0% Lutron Hi-lume™ A-series, EcoSystem or forward phase dimming to 1% Lutron Hi-lume™ 5-series, EcoSystem dimming to 5%

- * All LED drivers must be mounted in a deep canopy or remote
- * Standard LED drivers are suitable for Wet Location
- * Optional LED drivers are suitable for Damp Location
- * For EM applications:
All LED drivers may be used with 3rd party inverter style systems

CORD OPTIONS



- Black
Order Code = **BK**
For all locations
- White
Order Code = **WH**
For all locations
- Clear Silver Braid
Order Code = **CB**
For dry and damp locations only
- Cloth Cover
Order Code = **CC**
For dry and damp locations only

Specify cloth cord color in option section at the end of the part number

PHOTOMETRICS

LM-79-08 IES files available at www.v2LightingGroup.com/downloads

Beam Angle	Order Code	Intensity Plot (cd) (1300lm)	Polar Plot (cd) (1300lm)	Cone Diagram (1300lm)	Description										
20°	20			<table border="1"> <thead> <tr> <th>Beam Diameter</th> <th>Distance</th> </tr> </thead> <tbody> <tr> <td>1.9'</td> <td>5' 166 fc</td> </tr> <tr> <td>3.8'</td> <td>10' 42 fc</td> </tr> <tr> <td>5.7'</td> <td>15' 18 fc</td> </tr> <tr> <td>7.6'</td> <td>20' 10 fc</td> </tr> </tbody> </table>	Beam Diameter	Distance	1.9'	5' 166 fc	3.8'	10' 42 fc	5.7'	15' 18 fc	7.6'	20' 10 fc	CBCP = 3195 cd/klm Beam Angle = 21° Field Angle = 63° LOR = 89.4% Beam = full width @ 50% Field = full width @ 90%
Beam Diameter	Distance														
1.9'	5' 166 fc														
3.8'	10' 42 fc														
5.7'	15' 18 fc														
7.6'	20' 10 fc														
40°	40			<table border="1"> <thead> <tr> <th>Beam Diameter</th> <th>Distance</th> </tr> </thead> <tbody> <tr> <td>3.9'</td> <td>5' 84 fc</td> </tr> <tr> <td>7.9'</td> <td>10' 21 fc</td> </tr> <tr> <td>11.8'</td> <td>15' 9 fc</td> </tr> <tr> <td>15.7'</td> <td>20' 5 fc</td> </tr> </tbody> </table>	Beam Diameter	Distance	3.9'	5' 84 fc	7.9'	10' 21 fc	11.8'	15' 9 fc	15.7'	20' 5 fc	CBCP = 1607 cd/klm Beam Angle = 43° Field Angle = 73° LOR = 88.7% Beam = full width @ 50% Field = full width @ 90%
Beam Diameter	Distance														
3.9'	5' 84 fc														
7.9'	10' 21 fc														
11.8'	15' 9 fc														
15.7'	20' 5 fc														
60°	60			<table border="1"> <thead> <tr> <th>Beam Diameter</th> <th>Distance</th> </tr> </thead> <tbody> <tr> <td>5.6'</td> <td>5' 55 fc</td> </tr> <tr> <td>11.3'</td> <td>10' 14 fc</td> </tr> <tr> <td>16.9'</td> <td>15' 6 fc</td> </tr> <tr> <td>22.6'</td> <td>20' 3 fc</td> </tr> </tbody> </table>	Beam Diameter	Distance	5.6'	5' 55 fc	11.3'	10' 14 fc	16.9'	15' 6 fc	22.6'	20' 3 fc	CBCP = 1050 cd/klm Beam Angle = 59° Field Angle = 86° LOR = 85.2% Beam = full width @ 50% Field = full width @ 90%
Beam Diameter	Distance														
5.6'	5' 55 fc														
11.3'	10' 14 fc														
16.9'	15' 6 fc														
22.6'	20' 3 fc														

Beam Shaping Options

Add the order code shown below to the options box at the end of the part number:

Order Code	Description
-HL	Honeycomb Louver
-DF	Diffusion Lens
-SF	Satin finish on any standard reflector
-LS	Linear Spread Lens (60° x 1°)
-WW	Wall Wash Lens (shifts beam 20° from vertical)

COLOR OPTIONS

Anodized Effect



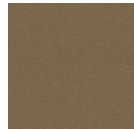
A1
Clear Silver



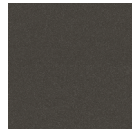
A2
Champagne



A3
Light Bronze



A4
Medium Bronze



A5
Dark Bronze



A6
Black

Metallic



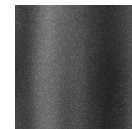
M1
Pearl



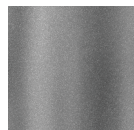
M2
Sea Foam



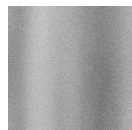
M3
Forest Gray



M4
Charcoal Gray



M5
Gunmetal Gray



M6
Dove Gray



M7
Old Copper



M8
Old Brass

Basic



L1
Gloss White



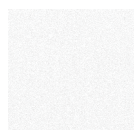
L2
Gloss Light Gray



L3
Gloss Dark Gray



L4
Gloss Black



T1
Textured Matte White



T2
Textured Matte Light Gray



T3
Textured Metallic Dark Gray



T4
Textured Matte Black

Sparkle



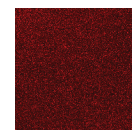
S1
Light Orange



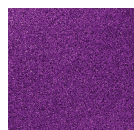
S2
Deep Orange



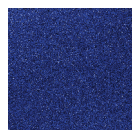
S3
Red



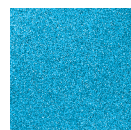
S4
Burgundy



S5
Violet



S6
Deep Blue



S7
Sky Blue

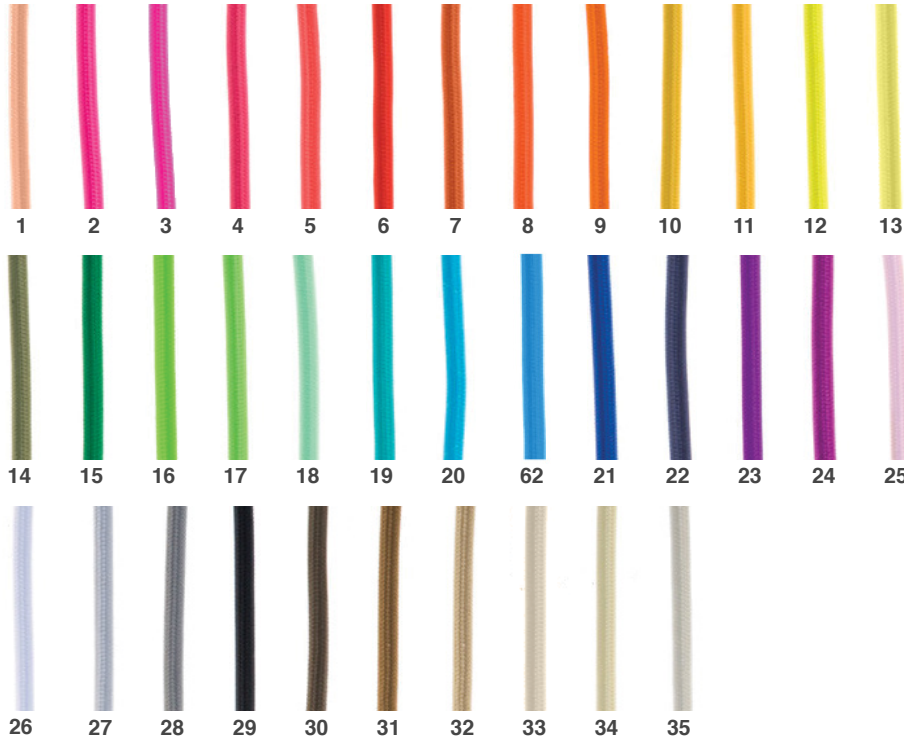


S8
Bright Green

The complete range of powder coat colors from Tiger Drylac is available - consult factory
 Custom match powder coat colors are available - consult factory
 Printed or on-screen colors are only approximations - consult v2 Color Chip Set Rev.4 before specifying

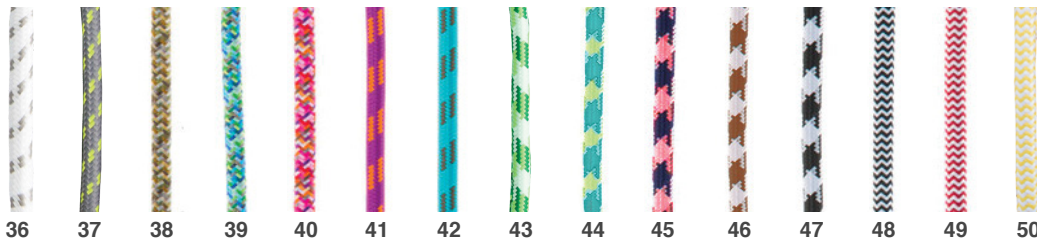
CLOTH CORD COLOR OPTIONS

For dry and damp locations only



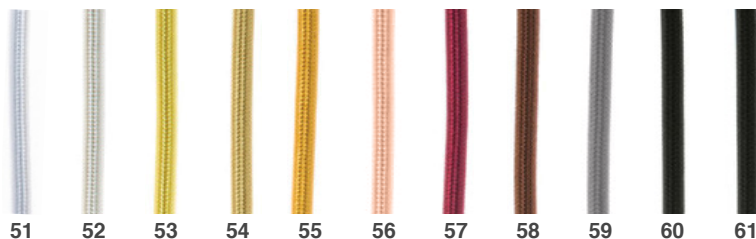
Solid Color Cloth Cords

1. Peach
2. Pink
3. Neon Pink
4. Hot Pink
5. Neon Coral
6. Red
7. Adobe
8. Orange
9. Neon Orange
10. Goldenrod
11. Sunshine Yellow
12. Neon Yellow
13. Citrus Yellow
14. Olive Green
15. Kelly Green
16. Neon Green
17. Lime Green
18. Mint Green
19. Turquoise
20. Skyblue
62. Electric Blue
21. Cobalt Blue
22. Navy
23. Purple
24. Magenta
25. Blush
26. White
27. Silver
28. Gray
29. Black
30. Antique Brown
31. Chocolate Brown
32. Flax
33. Khaki
34. Sand
35. Ivory



Patterned Cloth Cords

36. White & Gray Dot
37. Gray & Citrus Yellow Dot
38. Neutral Tweed
39. Cool Tweed
40. Warm Tweed
41. Magenta & Orange Stripe
42. Turquoise & Brown Stripe
43. Green Argyle
44. Turq. & Yellow Houndstooth
45. Navy & Coral Houndstooth
46. Brown & Ivory Houndstooth
47. Black & White Houndstooth
48. Black & White Zigzag
49. Red & White Zigzag
50. Yellow & White Zigzag



Metallic Cloth Cords

51. Pearl Metallic
52. Champagne Metallic
53. Yellow Gold Metallic
54. Brass Metallic
55. Copper Metallic
56. Copper Penny
57. Currant Metallic
58. Bronze Metallic
59. Gunmetal
60. Black Patent
61. Black Satin

Specify **cloth cord color** in option section at the end of the part number
 Printed or on-screen colors are only approximations - consult sample before specifying