

Drive Ergonomics Collection





DELIGHT **USERS** | EMPOWER **TECHNOLOGY** |



HOK office, Toronto. Photo credit: Richard Johnson Photography.

Drive Ergonomics Collection

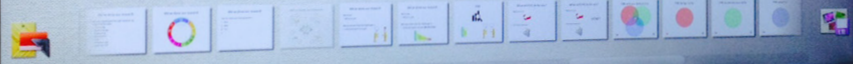
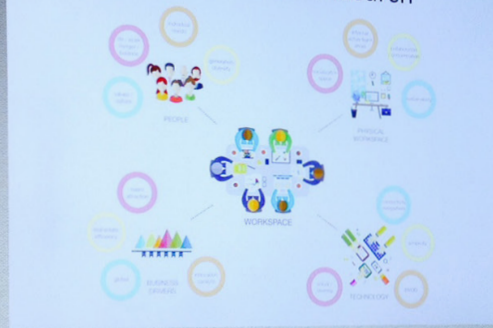
Take control of movement and wellness at work

We understand thoughtful details help drive the impact of a workspace. The Drive Ergonomics Collection gives employees the power to control their workspace. Improve productivity and wellness with height adjustable tables that allow you to sit or stand with just the touch of a finger, increase desk space and eliminate awkward positions with adjustable monitor arms and keyboard trays, and reduce headaches and eye strain with proper task lighting. Movement matters for a happier, healthier work life.





We've done our research





Stand up for health

Height adjustable desks

Our bodies are built to move – why shouldn't your workstation? Most office workers spend the majority of their day at their desk. Height adjustable tables offer the freedom to rise up and lower down with the touch of a finger, helping to boost metabolism, increase productivity and foster happier employees. Choose from two-legged and three-legged height adjustable desks for whatever your workspace demands. Our height adjustable bench allows you to communicate with your team easily and feel good about it. With a variety of load capacities, height ranges and leg options, we make it easy for you to find the right solution for your business needs.



E-Levo is smooth and quiet design with concealed crossbar.



E2-Levo & E3-Levo have more lifting capacity and an exceptional height range to suit many needs either with two legs or three legs.



Our Inscape Bench also features height adjustable options.

Beauty meets comfort

Nuform worksurfaces

Nuform is Inscape's unique and exclusive worksurface. Nuform is a durable, beautiful and ergonomic alternative to conventional worksurfaces. Its uninterrupted seamless edge looks and performs better than traditional laminate top edge-banding. Our straight edge option offers a sleek look while the popular tapered edge is ergonomically superior to traditional 90 degree edges, providing a comfortable sloped surface that eliminates pressure on wrists.

This beautiful worksurface is also resistant to stain, bacteria and heat and does not fade when exposed to sunlight. Choose from 30 finish options and customize the right shape and size for your space. Nuform is level® 2, GREENGUARD, and FSC-certified.



Straight Edge



Tapered Edge

Ergonomic chairs

Inscape's seating collection is a perfect fit across the office. Flexible enough to fit your body with the ability to adjust the height, back lumbar support, seat depth and much more. Our task seating includes the European-designed Agia – bringing comfort and style to your workplace. Discover the entire range of seating options on our website.



Agia





Give technology a lift

Motus monitor arms

Our collection of monitor arms adjust fluidly so it is easy to personalize the screen position. Keeping the neck, shoulders and back in the proper position is key to avoiding muscle fatigue.

Choose from a single monitor arm, double monitor arm or single arm with a laptop platform. Dual monitors allow workers to run multiple applications simultaneously, increasing productivity and convenience. For example, keep your e-mail browser open on one screen while you work on documents on the other.

With monitor quick release, cable management, 180 degree lock out and effortless adjustment, these monitor arms will keep users happy and productive.





A better visual experience

Lux lighting

Over 80% of our sensory experience is visual. Task lighting is an integral part of a well lit workplace. Inscape's collection of long lasting LED lighting brightens desks and helps workers avoid headaches and eye strain.

Like incandescent lamps and unlike most fluorescent lamps (e.g. tubes and compact fluorescent lamps or CFLs), LEDs come to full brightness without need for a warm-up time. The life of fluorescent lighting is also reduced by frequent switching on and off. LED lamps have a lifespan and electrical efficiency that is several times better than incandescent lamps, and significantly better than most fluorescent lamps.

Choose from three different light options ranging from compact light weight to sleek telescoping lighting. Adjust to any light level desired and save energy with built in dimmers, LED lighting, and 8 hour auto shut off. Lighting with USB charging port makes it easy to charge personal devices. Allow lighting to move with you and provide a well lit workspace to improve productivity and personalize the workspace.





A platform for technology

Keyboard platforms are just another way to give users control of their workspace, boosting engagement and wellness. Inscape's collection of keyboard platforms keep wrists in the proper neutral position, helping users avoid strains and pains while typing. When the keyboard is not required, it can be simply hidden underneath the desk, freeing up space for desktop work.

Inscape offers three different keyboard options with different length glide tracks, tilt and lock features and reversible designs that allow users to maintain the neutral wrist position and support the benefits of proper ergonomic seating.

All keyboard solutions include a keyboard platform, articulating arm, leatherette-covered gel palm rest(s), nonslip pads, mouse pad, mouse guards, and cord management clips at no extra charge. One part number is all you need for a complete system.

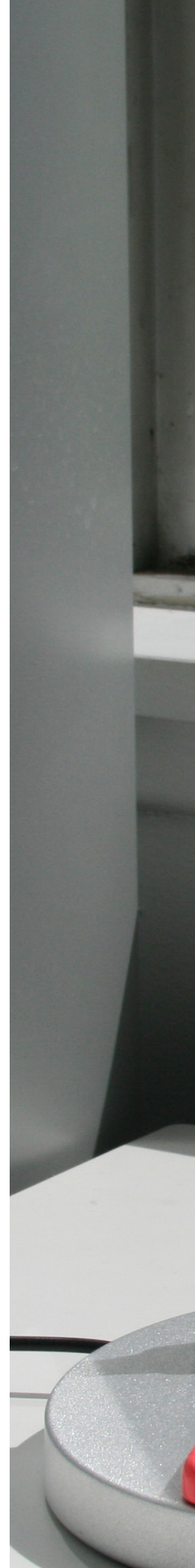
Sustainability matters

At Inscape, transforming regular offices into high-performing work environments is just one part of our mandate. Doing so in an environmentally intelligent way is the other.

Our deep sense of ecological responsibility is shared not only by everyone in the organization but also by our diverse group of customers, on whose behalf we are conscientious about design and manufacture principles. We seek to create workplace solutions that make sense for today and are kind to tomorrow—solutions that are sustainable, long-lasting and made from materials whose impact to our natural environment will be slight.

For example, Inscape's Superior and Prime keyboard platforms are a sustainable choice. Both are composed of 100% post consumer material, making them completely recyclable at the end of their life cycle. They are free of formaldehydes and carcinogens and emit no VOC's (Volatile Organic Compounds).

Our energy efficient lighting collection features built in dimmers, 8 hour auto shut-off or occupancy sensor features and low wattage, all of which attribute to cost savings and less use of electricity.





Drive Ergonomics Collection