

# Dimming Interface Module (DIM)

### APPLICATION

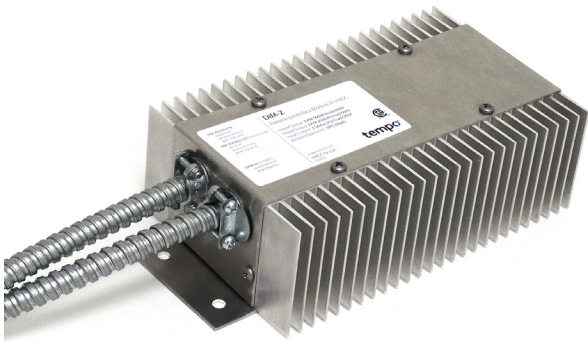
Tempo's Dimming Interface Module (DIM) converts a 0-10V dimming signal to an Electronic Low Voltage (ELV) dimming output to control Tempo luminaires with ELV power supplies. One DIM is required per run up to a maximum 900W (120V) or 2000W (277V). The DIM accepts a 0-10V dimming signal and fixed line voltage.

### CONSTRUCTION

- Sheet metal aluminum housing with extruded aluminum heat sinks
- 18" lead wires, 16 gauge, within flex conduit
- Self-diagnostic fault indicator
- CSA dry location listed
- Plenum rated

### PERFORMANCE

- 120-277VAC line voltage, 60 Hz
- 0-10V dimming input converts to Electronic Low Voltage (ELV) signal via a microprocessor based controller
- One DIM-Z per linear fixture run up to 900W (120V) or 2000W (277V)
- Operating temperature range of -20°C to 50°C
- Proprietary technology for use with Tempo Products only



**WARRANTY**  
Tempo provides a 5-year limited warranty.



US Patent-Pending

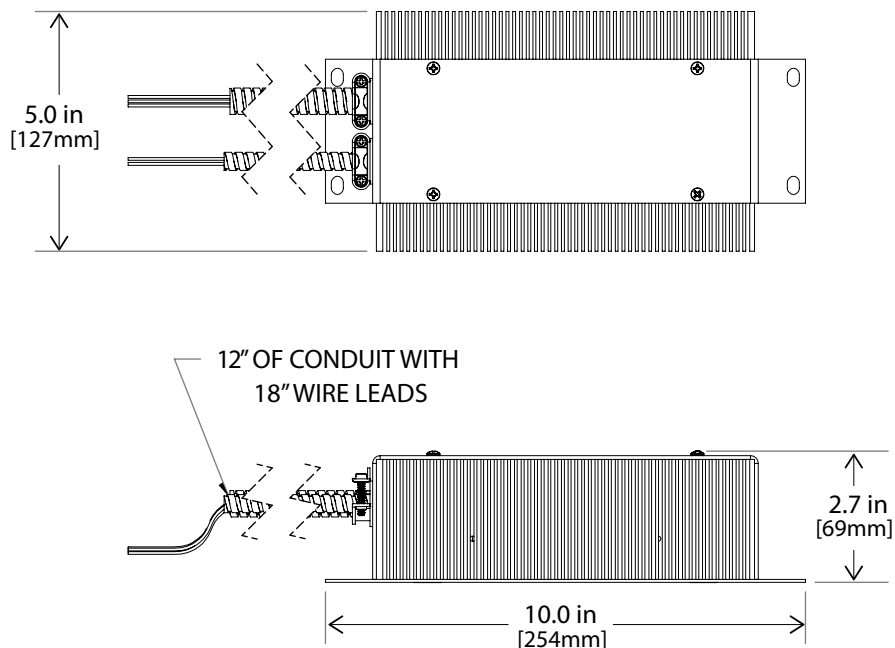
### ORDERING INFORMATION

Example: **DIM-Z**  
Dimming interface module converts 0-10V dimming signal to ELV

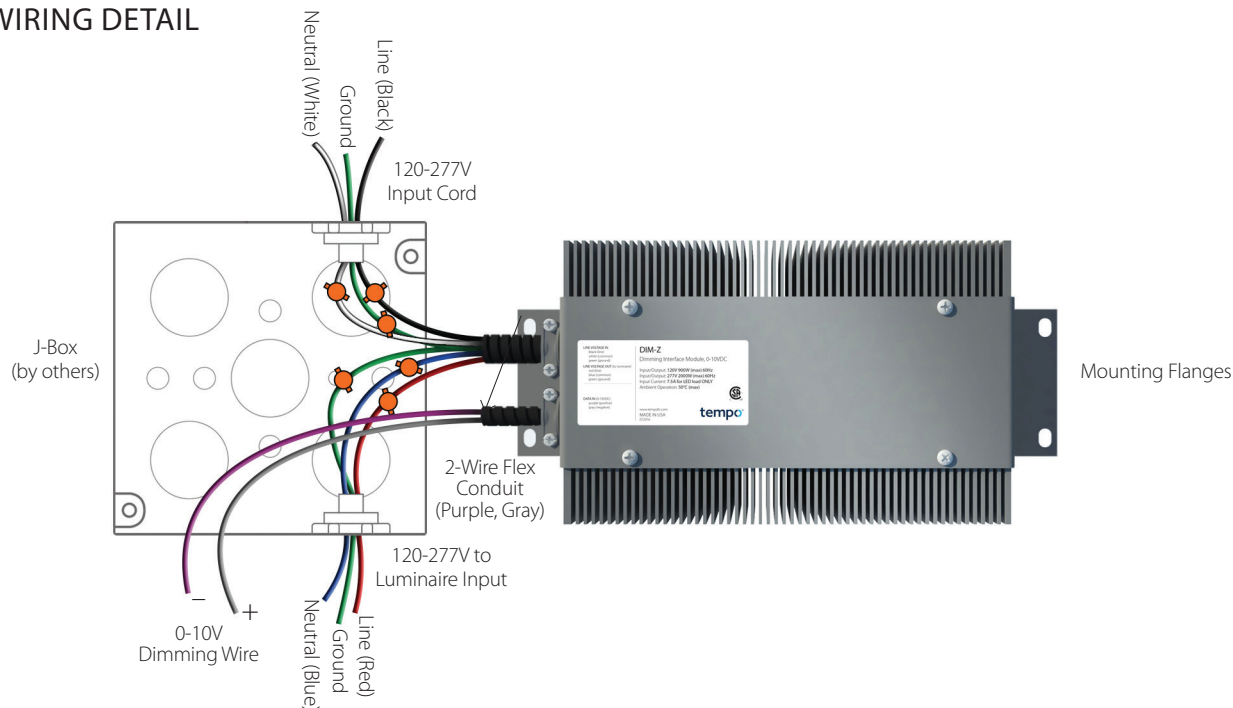
<b>DIM</b>	
<b>PLATFORM</b>	<b>DIMMING</b>
<b>DIM</b>	<b>Z</b> 0-10V signal to ELV

## Dimming Interface Module (DIM)

### DIMENSIONAL INFORMATION



### WIRING DETAIL



Tempo products and technologies are protected under one or more US and International patents.

Tempo reserves the right to change materials or modify the design of its product without notification as part of the company's continuing product improvement program. Please consult [www.tempollc.com](http://www.tempollc.com) for the most up-to-date specifications and technical data.