

## C6RX Exterior

RIGID LED LINEAR COVE LIGHTING, HIGH LUMEN  
INTREGAL POWER SYSTEM



## INSTALLATION INSTRUCTIONS

Ratings, Hardware and Warning.....	Page 1
Installation Instructions.....	Page 2-4

### IMPORTANT:

Before installing the C6RX be sure to install Tempo Surge Suppression Device (SSD-120/SSD-277) to every branch circuit to validate warranty.

### ELECTRICAL RATINGS

C6R Products Operate at Universal 120-277VAC



PFC-EXT-F-300

### REQUIRED HARDWARE

- 1) Power Feed Cable (PFC-EXT-F-300)

### OPTIONAL HARDWARE

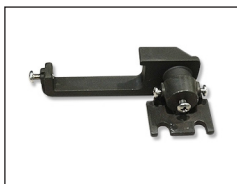
- 1) Joiner Feed Cable (JFC-EXT-FM-12)
- 2) Mounting Clips, screws provided (C6A-MC)
- 3) +/-90° Adjustable Mounting Bracket (PA-6)



JFC-EXT-FM-12



C6A-MC



PA-6

NOTE: For maximum C6RX run lengths, please refer to Specification Sheet



### WARNING:

Read and understand these instructions before installing. This product must be installed in accordance with the applicable installation code by a person familiar with the construction and operation of the product and the hazards involved. Turn off main power supply before you start installing C6RX Exterior.

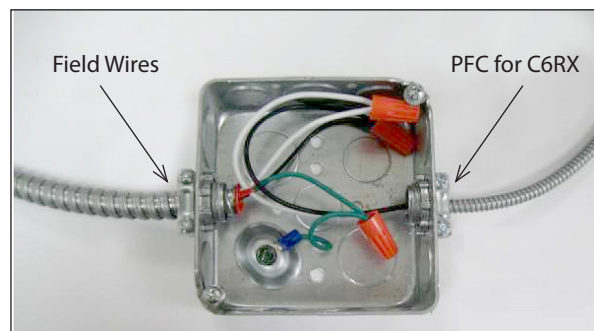
## C6RX Exterior

RIGID LED LINEAR COVE LIGHTING, HIGH LUMEN  
INTREGAL POWER SYSTEM

### INSTALLATION

#### IMPORTANT:

To achieve proper fixture ground, supplied Tempo Power Feed Cable (PFC) assembly must be used and attached to grounded J-Box. When connecting field wires to PFC wires observe polarity; i.e. White to neutral, Black to Line and Green to ground.



#### STEP 1

##### Connecting power to the C6RX:

Connect the female connector on the PFC to the male connector on the C6RX, **Figure 1**. Tighten the lock nut by hand, **Figure 2**.

Note: When connecting female to male connector ensure that the guide pin is inserted correctly into the guide hole for proper connection, **Figure 3**.

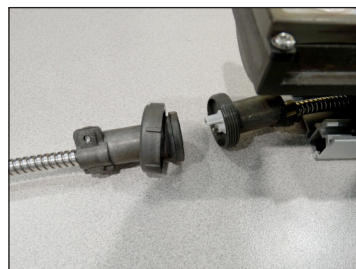


Figure 1



Figure 2

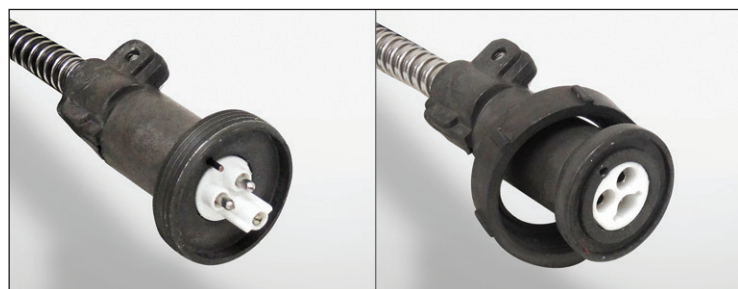


Figure 3

## C6RX Exterior

RIGID LED LINEAR COVE LIGHTING, HIGH LUMEN  
INTREGAL POWER SYSTEM

### INSTALLATION (continued)

#### STEP 2

##### Connecting fixture to fixture:

The C6RX can be joined to other C6RX products by inserting male connector and terminating to the female connector to the next fixture by tightening the lock nut, **Figure 4** and **Figure 5**.

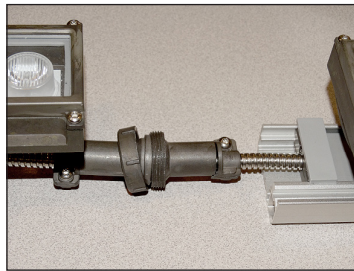


Figure 4

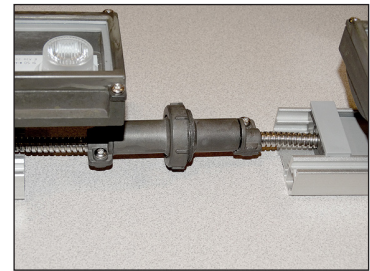


Figure 5

#### STEP 3A

##### Installing C6RX using optional flat mounting clip: C6A-MC

Place mounting clip on surface and secure using wall-dog screws (provided) **Figure 6**. Place C6RX on the mounting clip, placing one side of fixture track hook under mounting clip lip, **Figure 7**. Once the first side is engaged, carefully push down the fixture onto the clip to engage the opposite side, **Figure 8**.

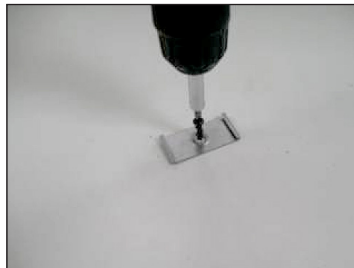


Figure 6



Figure 7



Figure 8

## C6RX Exterior

RIGID LED LINEAR COVE LIGHTING, HIGH LUMEN  
INTREGAL POWER SYSTEM

### INSTALLATION (continued)

#### STEP 3B

**Installing C6R using optional adjustable mounting clip:**

##### PAX-6

Secure adjustable mounting bracket to surface using wall-dog screws (provided), **Figure 9**. Place C6RX on the mounting clip, placing one side of the fixture track hook under the mounting clip lip and carefully pushing down on the fixture to engage the opposite side, **Figure 10** & **Figure 11**. Tighten screw to secure fixture to the mounting bracket, **Figure 12**. Adjust the fixture to the desired angle and tighten using a Phillips-head Screwdriver, **Figure 13**.

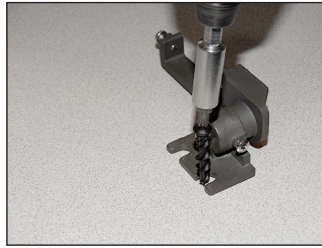


Figure 9



Figure 10

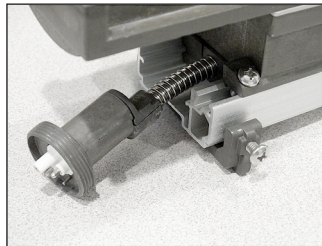


Figure 11



Figure 12

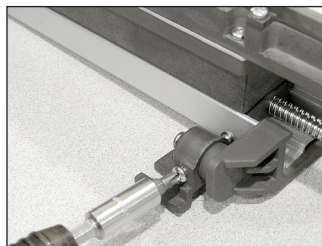


Figure 13