

Catalog # :

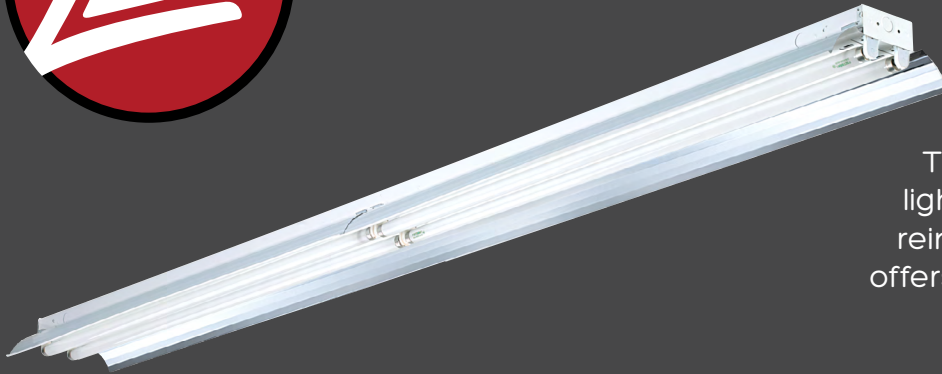
Project :

Prepared By :

Date :



FLB FL Linear Fluorescent Low Bay



The FLB fixture provides excellent lighting in heavy-duty, high-impact, reinforced steel housing. This series offers significant energy savings over HID low bays.

Features & Specifications

Electrical

- Universal Voltage (120-277 Vac) Electronic Ballast
- T5 or T8 offering.
- Suitable for up to 50° ambient operations
- Minimal start temperature -30°C
- Suitable for damp locations.
- Quick wire access panel allows for easy power connection.
- Inline fusing available.

Optics

- Miro-4 reflector

Construction

- Fixture housing, is made of 20 gauge, die formed steel.
- Miro-4 reflector is code gauge, die formed specular, aluminum finish, providing minimum 95% reflectivity.

Installation

- Unit may be chain, cable, toggle, or pendant mounted.
- Mounting accessories are to be ordered separately. See Accessories section.

Warranty

- LSI Fluorescent Fixtures carry a 3-year warranty.

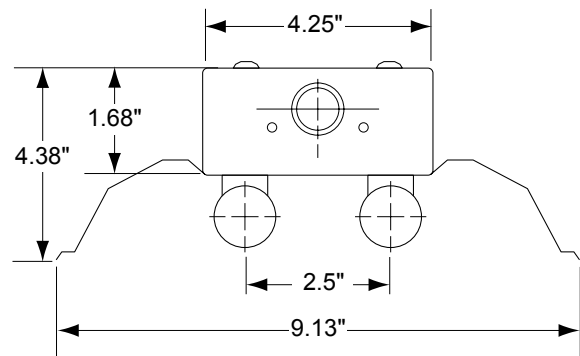
Listings

- Listed to UL 1598 and UL 8750.
- American Recovery and Reinvestment Act Funding Compliant.



ARRA
Funding Compliant

Dimensions





FLB FL Linear Fluorescent Low Bay

Features & Specifications (Cont.)

Ambient Temperature Fixture Rating

Part Number	Description	12" Chain Mount
IFA4254UEP5	4' 2 Lamp 54W T5HO	131°F 55°C
IFA4232UEI8	4' 2 Lamp 32W T8	131°F 55°C
IFA8254UEP5	8' 4 Lamp 54W T5HO	131°F 55°C
IFA8232UEI8	8' 4 Lamp 32W T8	113°F 45°C

Luminaire Ordering Guide

TYPICAL ORDER EXAMPLE: **FBHB FL 4 4 32 UNV SSOHL 3T**

Family Prefix	Fixture Length	Lamps/Cross Section	Wattage	Voltage	Ballast	Optics	Options
FLB FL	4 - 4 Feet 8 - 8 Feet	2 4	32 - 32W T8 54 - 54W T5HO	UNV - Universal (120-277V) 480V - 480 volt	SSO - T8 Electronic Instant Start SS5HO - T5HO Electronic Program Start	Blank - Miro-4	3C - 3' Cord (No Plug) 3T - 3' 120V Cord & Plug 3E - 3' 208V Cord & Plug 3F - 3' 240V Cord & Plug 3S - 3' 277V Cord & Plug 3I - 3' 480V Cord & Plug F - Inline Fusing N - No Lamps 83 - 835 Lamps 85 - 850 Lamps OS - Occupancy Sensor EB - Emergency Ballast Backup PM - Pendant Mount

Accessories

CH36 - Chain Mounting Set

CH36HFC - Chain Mounting Set and Hammer-On Flange Clip

CA36 - Cable Mounting Set

MS360 - 360° Motion Sensor