

# INSTALLATION AND ASSEMBLY INSTRUCTIONS

## HILTON® HR SERIES AFT / AI / A5 REFLECTOR KIT

**WARNING:** Disconnect power before servicing.

**WARNING:** Verify the existing input voltage. Make sure it matches the pre-wired voltage of the power panel. On multi-tap ballasts, be sure to wire to correct supply lead voltage! Cap off unused wires individually.

**WARNING:** Wiring to be performed by qualified electrician.

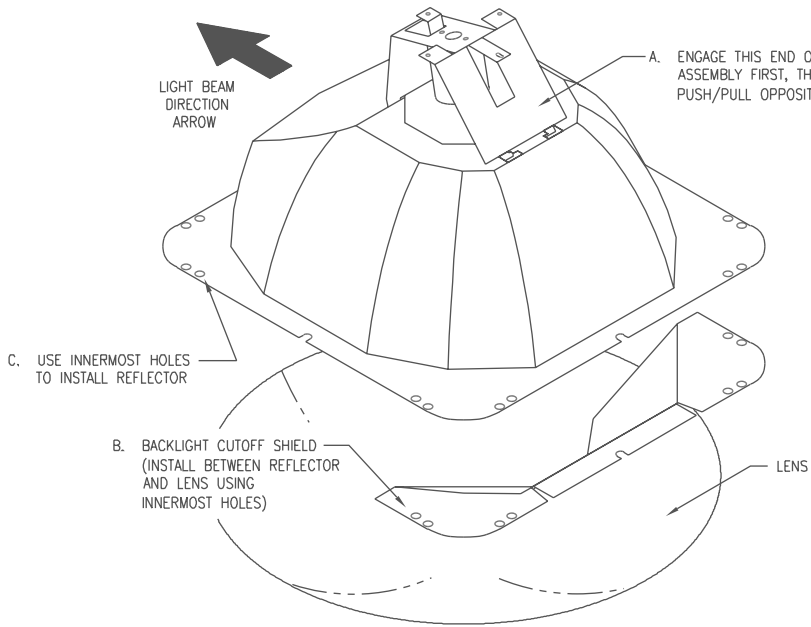
**IMPORTANT:** Multi-tap ballasts are pre-wired to 277V.

**IMPORTANT:** Socket assemblies and cutoff shields are packed in *bottom of outer reflector carton*.

1. It is important to identify which reflector kit you are installing. Read label on outside of carton to confirm kit type. AI and A5 kits include a new reflector and new socket assembly. AFT kits include a new reflector, new socket assembly, and new backlight cutoff shield.
2. Loosen (4) top cover screws (do not remove - screws are captive). Allow cover to hang over side of housing on safety cable (do not remove cover).
3. Remove ballast cover by removing both screws. Set aside to reuse later.
4. Unplug quick connect from power panel to reflector. Remove (4) hex nuts securing reflector. Lift reflector out and set aside. Keep nuts to reuse.
5. Remove lamp from reflector. Discard lamp and reflector per local code.
6. Locate socket assembly packed in *bottom of outer reflector carton*. Attach socket assembly to top of new reflector by engaging tabs on one end of socket assembly into mating slots of reflector top. Then push/pull opposite side of socket assembly to engage opposite side of reflector top. Depending on which type of reflector kit you have, see Figures 1A-1C.

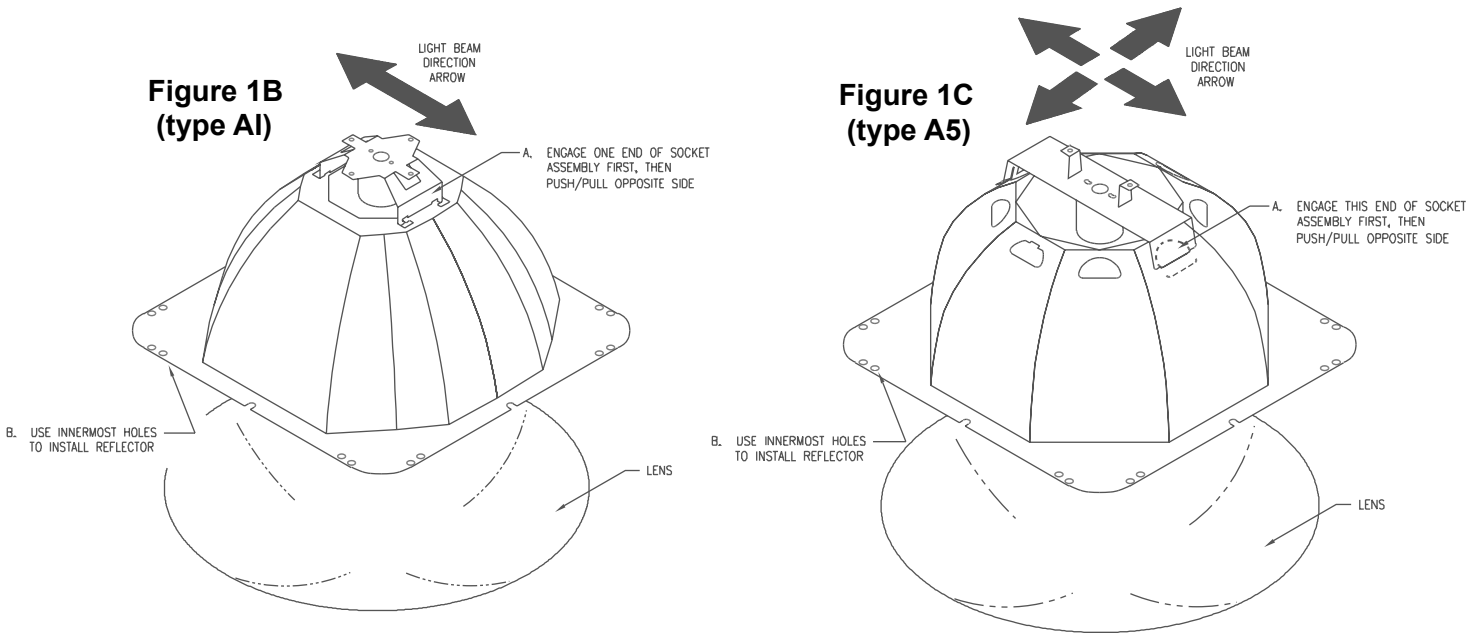
**NOTE:** Reflectors are directional. Use arrow on label to direct light in correct direction.

7. Install new lamp in new reflector. Tighten lamp, then loosen slightly, then retighten for secureness and long life. Wipe lamp and reflector with dry, clean cloth. Secure new reflector/socket assembly to housing using old hex nuts thru reflector flange! See Figures 1A-1C, depending on reflector type.
8. On type AFT reflectors only, locate additional cutoff shield in bottom of outside reflector carton and install as shown in Figure 1A.



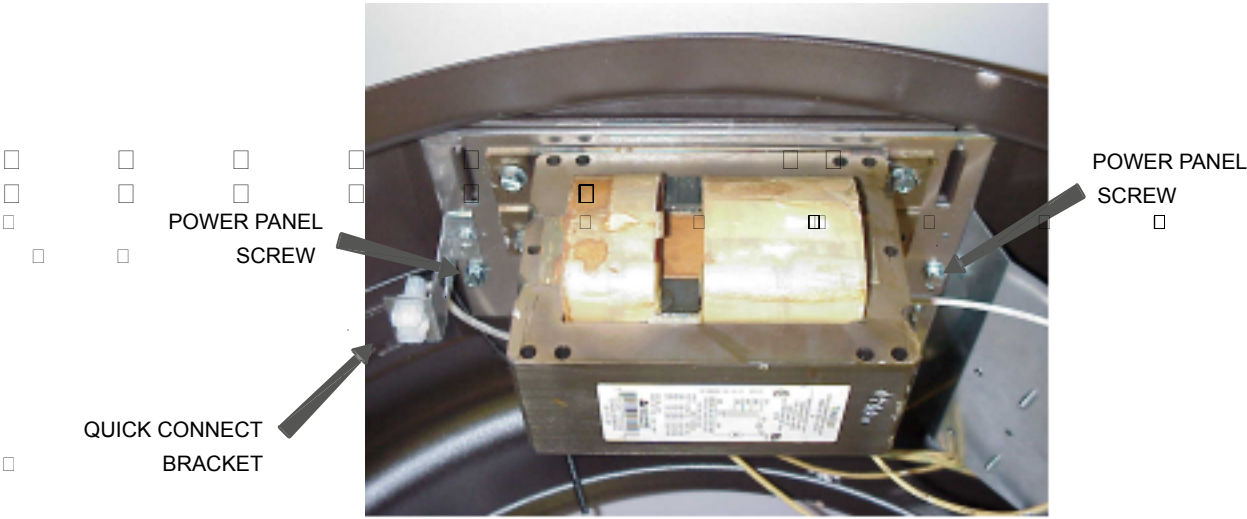
**Figure 1A  
(type AFT)**

# INSTALLATION AND ASSEMBLY INSTRUCTIONS, cont'd.



**NOTE:** If replacing reflector only, proceed to step 13. If replacing ballast and reflector, proceed to step 9.

9. Disconnect incoming power leads from ballast and ground.
10. Remove (2) screws securing power panel. See Figure 2. Keep screws to reuse. Discard components per local code.
11. Install new power panel. Secure in place using (2) screws.
12. Wire to local code and National Electrical Code. Use all ground leads.
13. Connect quick connect from reflector to power panel.



**Figure 2**

14. Install ballast cover. Secure using (2) screws.
15. Locate new ballast cover labels shipped with reflectors. Place new label over existing label on ballast cover. This ensures ballast will be serviced correctly in the future. Replace label ONLY if changing ballast wattage from 1000 to 750.
16. Install top cover by evenly tightening (4) screws, making sure safety cable is not pinched.

### Questions?

Call LSI Field Service  
1-800-436-7800 Ext. 3300 Fax 1-877-861-1368

