

INSTALLATION AND ASSEMBLY INSTRUCTIONS

HILTON™ LARGE SERIES

ARM MOUNT

U.S. PATENT No. D321,406

WARNING

All installation, service, and maintenance of LSI Industries lighting products must be performed by an electrician qualified in building and site lighting. It is the responsibility of the electrician to follow all local codes, the National Electrical Code, and OSHA regulations.



LUMINAIRE PREPARATION

1. Remove luminaire from packaging, taking care to protect the finish.
2. Open luminaire door by loosening the (4) captive door screws.
3. Remove reflector by:
 - A. Loosen the quarter-turn fasteners. Grab reflector by sides. **Do not touch inside of reflector!**
 - B. Lift slightly and push rearwards towards hinge in order to disengage reflector tab from hinge slot. Remove reflector. See Figure 1.

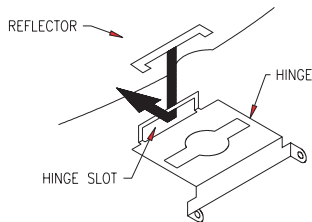


FIGURE 1

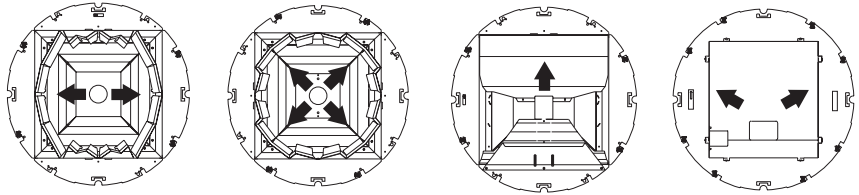


FIGURE 2
(Arrows indicate light direction)

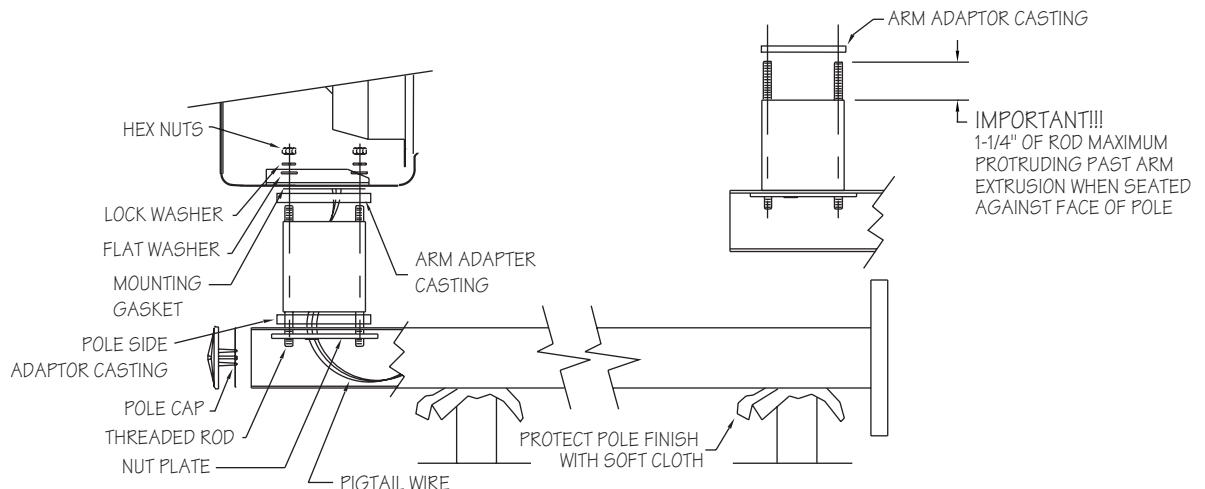
4. Lay pole on raised surface. Protect pole finish with a soft cloth. See Figure 3.
5. Remove bolts securing power panel to housing. Loosen both bolts at keyhole slots and set power panel aside. See Fig. 3.
6. Insert nut plate into pole end, so the large center hole is closest to the pole end. Thread both all-thread rods into nut plate.

NOTE: When mounting arm and luminaire to a round pole, use the pole side adaptor casting between arm and pole.

IMPORTANT! Arm adaptor casting must be installed between arm and housing!

IMPORTANT: Luminaire is supplied with 150C rated wiring!

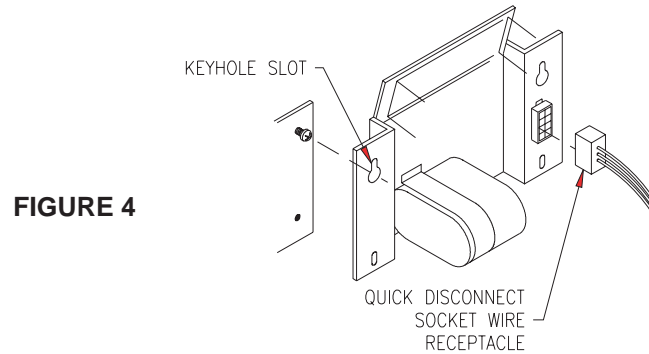
7. Feed supplied pigtail wiring from luminaire through bracket arm and into pole.
8. Secure luminaire using flat washer, lock washer, and nut (in that order), then tighten. Repeat for other all-thread. Tighten top mounting bolt first, then lower bolt, making certain that arm and luminaire are perpendicular with pole.



WARNING: Risk of electrical shock. High temperature inside luminaire. Make certain that supply wiring is not “hot” before wiring. Luminaire may be equipped with a multi-tap ballast. It may be necessary to change ballast primary lead to match supply voltage. All unused ballast leads must be individually capped. Connect wiring according to local code and the National Electrical Code.

NOTE: Some luminaires may be equipped with multi-tap ballast. It may be necessary to change primary wiring leads to match incoming voltage!

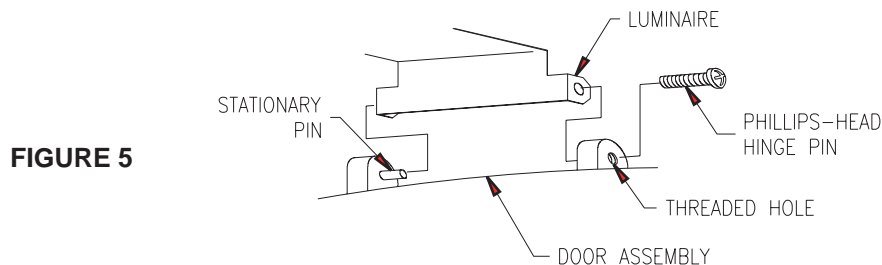
9. Install ballast assembly by hooking keyhole slots in plate over screw heads on housing side mounting brackets and locating tab on plate into slot in center mounting bracket. Slide ballast assembly downward until firmly seated. Tighten both screws. See Fig. 4.



10. Connect wiring according to local codes and National Electrical Code. Make certain supply voltage matches ballast primary voltage.
11. Re-engage reflector tab into hinge slot.

IMPORTANT: All Hilton/Hatteras reflectors are rotatable (except small models) in 90 degree increments. Position reflector in housing for desired light distribution. See Figure 3.

12. Plug socket leads into quick disconnect receptacle onto ballast plate. See Figure 4.
13. Close reflector assembly and secure with four 1/4-turn fasteners loosened earlier. See Figure 2.
14. Locate separately shipped lamp. Check to make sure lamp type and wattage are the same as shown on label.
15. Install lamp. To ensure best contact in socket, tighten lamp, loosen, then re-tighten. Wipe lamp, lens surfaces, and reflector surfaces with dry, clean, soft cloth.
16. Locate separately shipped door assembly.
17. Remove Phillips-head hinge pin and hook remaining pin on door assembly into hinge on luminaire.
18. Re-insert Phillips head hinge pin into threaded hole being sure that pin engages hole in hinge, tighten fully. See Figure 5.



19. Carefully close door and secure using captive fasteners.
20. The luminaire and pole assembly are now ready for installation to anchor bolts. When erecting, use belts, slings, or rope. Do not use chain or cable. Do not attach at luminaire arm.

IMPORTANT: Before setting pole on anchor bolts, make certain pole and luminaire are still positioned correctly for desired light distribution. Set and level pole on anchor bolts using nuts and washers provided.

INSTALLATION AND ASSEMBLY INSTRUCTIONS

HILTON™ LARGE SERIES

YOKE MOUNT

U.S. PATENT No. D321,406

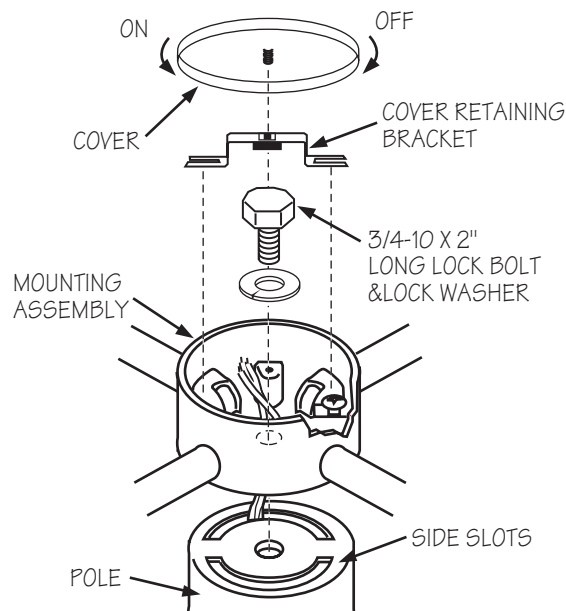
WARNING

All installation, service, and maintenance of LSI Industries lighting products must be performed by an electrician qualified in building and site lighting. It is the responsibility of the electrician to follow all local codes, the National Electrical Code, and OSHA regulations.

NOTE: Some luminaires may be equipped with multi-tap ballast. It may be necessary to change primary wiring leads to match incoming voltage!

1. Make certain supply voltage matches luminaire's pre-wired voltage. If it does not match, luminaire must be re-wired.
 - A. Open door by loosening (4) door lock screws.
 - B. Disconnect housing retainer bracket by bending slightly outward to unhook bracket from housing.
 - C. Loosen (4) 1/4-turn fasteners from sides of reflector. See Figure 2.
 - D. Hinge reflector away from housing to expose ballast.
 - E. Connect to proper voltage lead or terminal to match supply voltage. **All unused leads must be individually capped off!**
 - F. Hinge reflector back down and refasten (4) 1/4-turn fasteners loosened earlier.
 2. Locate separately shipped lamp. Make certain that lamp type and wattage match the luminaire's label.
 3. Install lamp. To ensure best contact in socket, tighten lamp, loosen, then re-tighten. Wipe lamp, lens surfaces, and reflector surfaces with dry, clean, soft cloth. Unscrew (counterclockwise) cover from wiring/mounting assembly. See Figure 4.
 4. Carefully close door, reconnecting housing retaining bracket by hooking slot over tab on housing bracket, and secure with captive fasteners.
 5. Slide cover retaining bracket from under screw heads and remove. Remove mounting bolt and lock washer.
 6. Unscrew (counter-clockwise) cover from wiring/mounting assembly. See Figure 6.
 7. Slide cover retaining bracket from under screw head and remove. Remove mounting bolt and lock washer.
- NOTE: On small luminaires, mounting bolt and lock washer are attached to yoke arm. See Figure 6.**

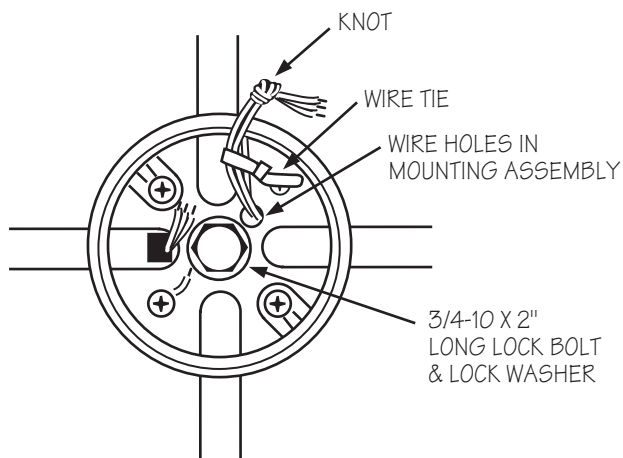
FIGURE 6



8. Feed supplied pigtail wiring through pole top plate side slots and through either hole in bottom of mounting assembly. See Figure 7.
9. Attach luminaire to top of pole with the 3/4 - 10 x 2" lock bolt and lock washer threading into top of pole. Be certain not to pinch wire between mounting assembly and pole top. See Figure 7.

IMPORTANT: Make certain luminaire is positioned correctly on pole top for desired distribution. Luminaire may be rotated 360 degrees on pole top for proper positioning. Align yoke arms with luminaires on all poles and align and tighten mounting bolt securely when proper position is determined. See Figure 2 for light distributions for each reflector type.

FIGURE 7



10. Tie incoming supply leads into a knot and loop through strain relief wire tie provided. Tighten wire-tie. See Figure 7.
11. Attach all ground wires together (two from fixture and one from incoming supply).
12. Connect wiring according to local and National Electrical Code.

IMPORTANT: Luminaire is supplied with 150C rated wiring!

IMPORTANT WIRING INFORMATION: Risk of electrical shock.

- Make certain supply wiring is not "HOT" before wiring luminaire.
- Make certain supply voltage corresponds to luminaire voltage.
- Fixture may be equipped with a multi-tap ballast. It may be necessary to remove top and ballast cover to change ballast primary wiring to match supply wiring.

13. Install cover.
14. The luminaire and pole assembly are now ready for installation to anchor bolts. When erecting, use belts, slings or rope - do not use chain or cable. Do not attach at luminaire arm.

IMPORTANT: Before setting pole on anchor bolts, make certain that pole and luminaire are still positioned correctly for desired light distribution. Set and level pole on anchor bolts using nuts and washers provided.

Installation Questions?

Call LSI Field Service Department at:

1-800-436-7800 Ext. 3300 Fax: (513)984-9723



LSI LIGHTING SYSTEMS
An LSI Industries Company
10000 Alliance Road
Cincinnati, Ohio 45242
(513) 793-3200 Fax (513) 984-1335
www.lsi-industries.com