

# INSTALLATION AND ASSEMBLY INSTRUCTIONS

## HILTON® II SERIES

### ARM MOUNT

#### WARNING

All installation, service, and maintenance of LSI Industries lighting products must be performed by an electrician qualified in building and site lighting. It is the responsibility of the electrician to follow all local codes, the National Electrical Code, and OSHA regulations.



#### LUMINAIRE PREPARATION

1. Remove luminaire from packaging, taking care to protect the finish.
2. Remove ballast cover by loosening three (3) screws on top cover.
3. Disconnect quick-connect, separating socket from ballast.
4. Remove ballast cover by rotating 1/4-turn fasteners 90 degrees.
5. Loosen but do not remove (2) Phillips-head screws and lift out ballast/capacitor assembly. See arrows in Figure 1.

#### ASSEMBLY OF ARM AND LUMINAIRE TO POLE

1. Lay pole on raised surface. Protect pole finish with soft cloth. See Figure 2.
2. Insert nut plate into pole end, so the large center hole is closest to the pole end. Thread both all-thread rods into nut plate.

**NOTE:** When mounting arm and luminaire to a round pole, use the pole side adaptor casting between arm and pole.

**IMPORTANT!** Arm adaptor casting must be installed between arm and housing!



PHILIPS HEAD SCREWS

FIGURE 1

3. Secure luminaire using flat washer, lock washer, and nut (in that order), then tighten. Repeat for other all-thread. Tighten top mounting bolt first, then lower bolt, making certain that arm and luminaire are perpendicular with pole.
4. Feed supplied pigtail wiring from luminaire through bracket arm and into pole.

**IMPORTANT:** Luminaire is supplied with 150C rated wiring!

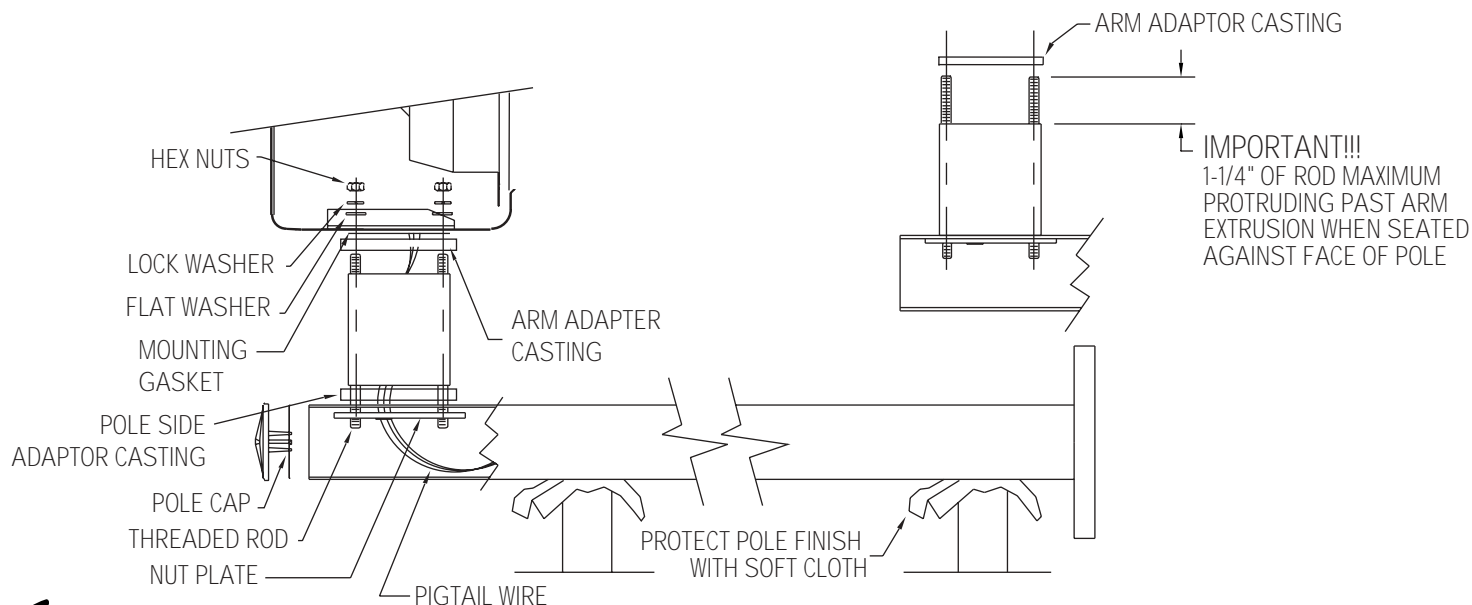


FIGURE 2

## WIRING CONNECTIONS

**WARNING:** Risk of electrical shock. High temperature inside luminaire. Make certain that supply wiring is not “hot” before wiring. Luminaire may be equipped with a multi-tap ballast. It may be necessary to change ballast primary lead to match supply voltage. All unused ballast leads must be individually capped. Connect wiring according to local code and the National Electrical Code.

**NOTE:** Supplied pigtail wiring is rated 150 C!

5. Reinstall ballast/capacitor assembly (power panel) and retighten (2) Philips head screws. **IMPORTANT** - Note that power panel hooks onto top edge of reinforcement and supports weight of panel!
6. After connections are made, incoming supply leads must be reliably held away from hot surfaces of the ballast and reflector using wire-tie provided above.
7. Reinstall ballast cover.

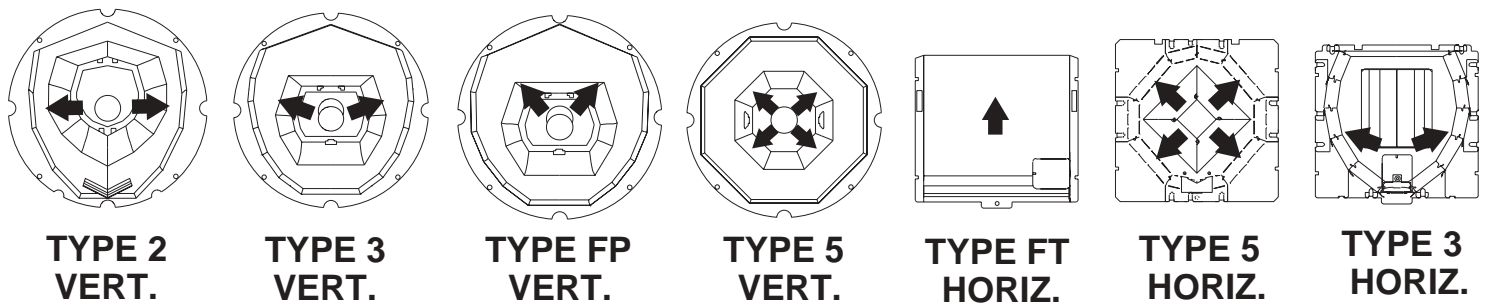
## COMPLETING LUMINAIRE ASSEMBLY

1. Install lamp by removing top socket assembly or top of reflector.
2. Check to make sure lamp type and wattage are the same as shown on fixture label.
3. To ensure best contact in socket, tighten, loosen, and re-tighten lamp. Wipe lamp with a soft, dry, clean cloth.

**WARNING:** If lamp is soiled, operating hours and performance will significantly decrease.

4. Replace socket assembly or top of reflector.
5. Replace top cover and secure. Clean outside of lens with a non-amonia, non-static cleaner.
6. The luminaire and pole assembly are now ready for installation to anchor bolts. When erecting pole, use belts, slings, or ropes - do not use chain or cable. Do not lift by luminaire arm.

**FIGURE 3**  
(ARROWS INDICATE LIGHT DISTRIBUTION PATTERNS)



**NOTE:** Before setting pole on anchor bolts, check to make sure pole and luminaire are still positioned correctly for desired light distribution. Set and level anchor bolts using nuts and washers provided.

# INSTALLATION AND ASSEMBLY INSTRUCTIONS

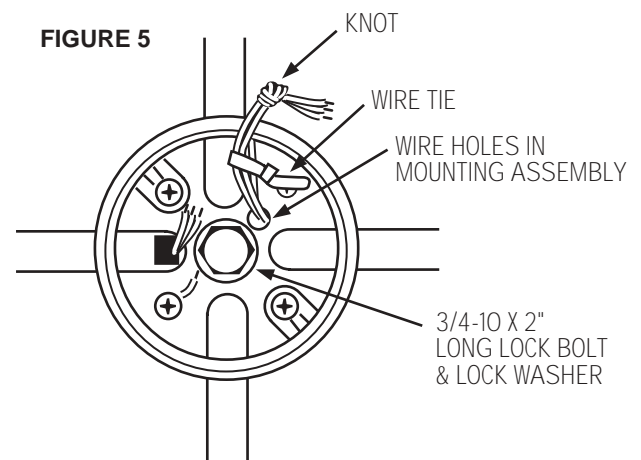
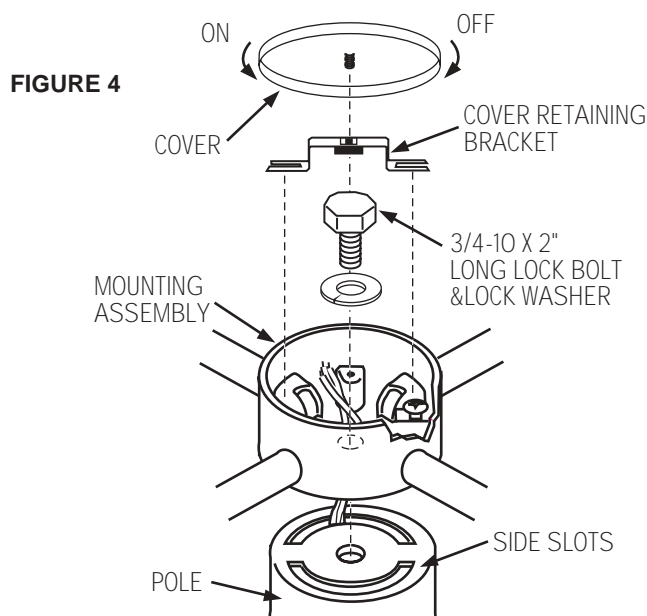
## HILTON® II SERIES

### POLE TOP (YOKE) MOUNT

1. Unscrew (counterclockwise) cover from wiring/mounting assembly. See Figure 4.
2. Slide cover retaining bracket from under screw heads and remove. Remove mounting bolt and lock washer.
3. Feed supplied pigtail wiring through pole top plate side slots and through either hole in bottom of mounting assembly. See Figure 4.
4. Attach luminaire to top of pole with the 3/4 - 10 x 2" lock bolt and lock washer threading into top of pole. Be certain not to pinch wire between mounting assembly and pole top. See Figure 5.

#### IMPORTANT NOTE

Make certain that luminaire is positioned correctly on pole top for desired light distribution. Luminaire may be rotated 360° on pole top for proper positioning. See Figure 3 for light distribution patterns.



## WIRING CONNECTIONS

5. Tie incoming supply leads into a knot and loop through strain relief wire tie provided. Tighten wire-tie. See Figure 5.
6. Attach all ground wires together (two from fixture and one from incoming supply).
7. Connect wiring according to local and national electrical codes.

**IMPORTANT: Luminaire is supplied with 150C rated wiring!**

**IMPORTANT WIRING INFORMATION: Risk of electrical shock.**

- Make certain supply wiring is not "HOT" before wiring luminaire.
- Make certain supply voltage corresponds to luminaire voltage.
- Fixture may be equipped with a multi-tap ballast. It may be necessary to remove top and ballast cover to change ballast primary wiring to match supply wiring.

8. Reinstall cover retaining bracket by sliding bracket under screw heads.
9. Screw cover (clockwise) onto wiring/mounting assembly. See Figure 4. **DO NOT OVER TIGHTEN.**
10. Install lamp by following Steps 1 - 5 of "Completing Luminaire Assembly" on other side.
11. The luminaire and pole assembly are now ready for installation to anchor bolts. When erecting, use belts, slings or rope - do not use chain or cable. Do not attach at luminaire arm.

### IMPORTANT NOTE

**Before setting pole on anchor bolts, make certain that pole and luminaire are still positioned correctly for desired light distribution. Set and level pole on anchor bolts using nuts and washers provided.**

## Installation Questions?

Call LSI Field Service Department at:  
1-800-436-7800 Ext. 3300 Fax: (513)984-9723



LSI LIGHTING SYSTEMS  
An LSI Industries Company  
10000 Alliance Road  
Cincinnati, Ohio 45242  
(513) 793-3200 Fax (513) 984-1335  
[www.lsi-industries.com](http://www.lsi-industries.com)