

INSTALLATION AND ASSEMBLY INSTRUCTIONS
Sterling XSB Series HSS HOUSE SIDE SHIELD



SMARTVISION®

WARNING: Failure to follow instructions could result in damage to product and void warranties!

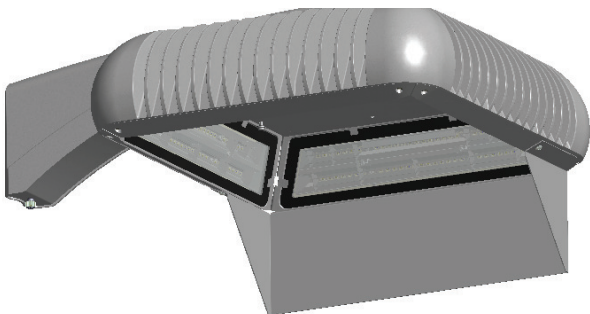
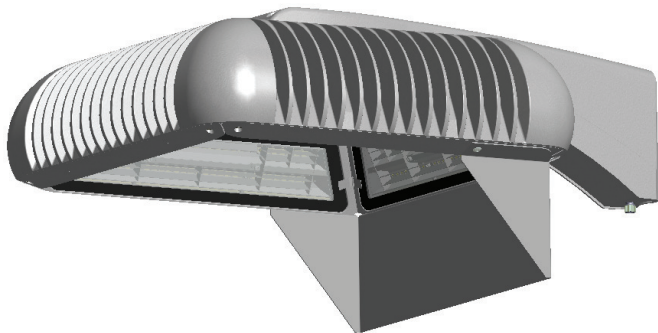
WARNING: Risk of fire or electrical shock. Disconnect power before installing or servicing.

WARNING: Before proceeding, read all instructions carefully to ensure proper and safe installation.

IMPORTANT: This product must be installed in accordance with the applicable installation code by a person familiar with the construction and operation of the product and the hazards involved.

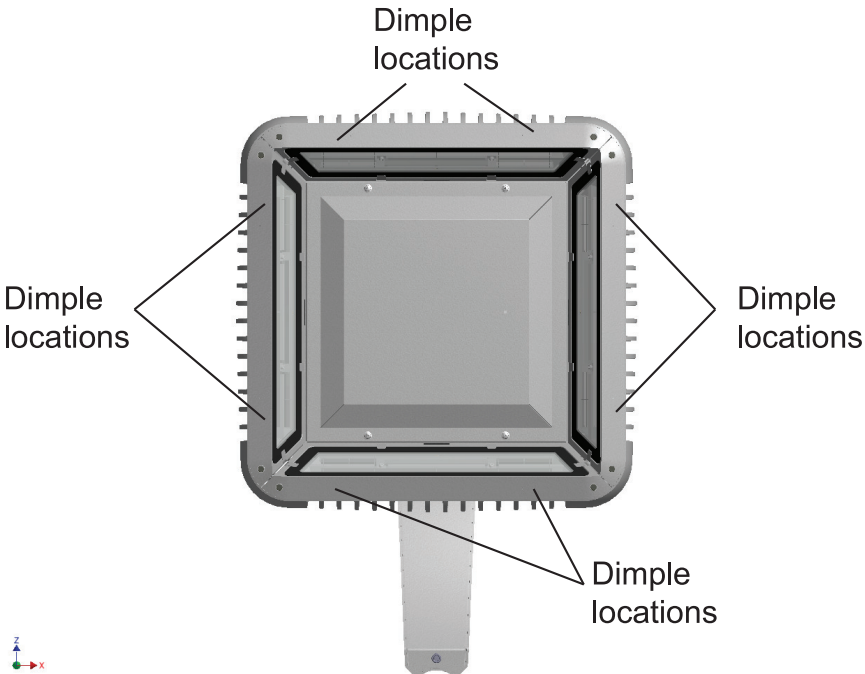
Tools required: Drill & 11/64” drill bit, and size T20 Torx driver.

1. Shield can be mounted on any side of Luminaire.



XSB HSS, cont'd.

2. After determining which side to mount Shield to, locate (4) dimples in Luminaire that require drilling.



3. Drill (4) dimples to a MAXIMUM depth of 1/4” deep. DO NOT EXCEED 1/4” DEPTH!

4. Position Shield to Luminaire. Secure Shield to Luminaire using (4) supplied screws. Tighten (4) screws evenly.



Installation Questions?
Call LSI Field Service Department at:
1-800-436-7800 Ext. 3300
Fax: 1-877-861-1368