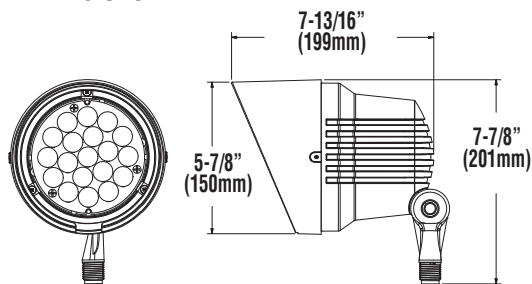


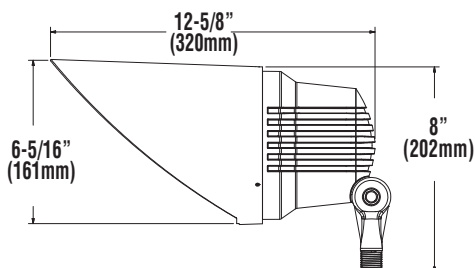
# LSI LED BULLETS LARGE FLOOD (XBAL)



## DIMENSIONS



XBAL USF / USC



XBAL DSF/DSC

**SHIELD** – One-piece, die-cast aluminum, 360 alloy, low copper .125" nominal wall thickness shield secures to housing via three, stainless steel recessed hex socket screws. .228" thick clear tempered glass lens is sealed to shield by a one-piece molded silicone gasket.

**EXPECTED LIFE** - Minimum 60,000 to 100,000 hours depending upon the ambient temperature of installation location.

**LEDS** - Select high-brightness LEDs in Moon White (6000K) for tree lighting applications, Cool White (5000K) color temperature, 70 CRI. Neutral White (4000K) or Warm White (3500K) color temperature, 80 CRI.

**DISTRIBUTION PATTERN** - LED module is strategically mounted to interchangeable optical panels, to deliver a choice of 3 high performance distributions; FL40°, NFL25°, SP10°.

**HOUSING** - Architecturally styled, one-piece, die-cast aluminum, 360 alloy, low copper housing features a multi-radius round shape with integral cooling ribs over the back, and .125" nominal wall thickness. One-piece molded silicone gasket seals the shield to the housing and is concealed when fixture is closed.

**MOUNTING** - ½" NPSM mounting arm is standard. Mounting arm may be threaded into hubs in tree or surface mounts, spikes, junction boxes, or CFH composite J-box. Mounting arm provides a 200° + range of motion to achieve desired aiming angles.

**ELECTRICAL** - Surge protection (including separate surge protection built into electronic driver) IEEE C62.41.2-2002, Scenario 1, Location Category C, 3KV. Available with universal voltage power supply 120-277VAC (UE - 50/60Hz input).

**INTEGRAL DRIVERS** - Available in Super Saver (SS) and High Output (HO) drive currents. Driver components are fully encased in potting for moisture resistance. Complies with IEC and FCC standards. Optional 0-10V dimming driver available, with controls by others.

**OPERATING TEMPERATURE** - -40°C to +40°C (-40°F to +104°F).

**FINISH** - Each fixture is finished with a polyester powder coat process. Standard colors include bronze, black, platinum plus, white, satin verde green, metallic silver, and graphite.

**WARRANTY** - LSI LED fixtures carry a limited 5-year warranty.

**PHOTOMETRICS** - Please visit our web site at [www.lsi-industries.com](http://www.lsi-industries.com) for detailed photometric data.

**SHIPPING WEIGHT (IN CARTON)** - 7 lbs. (3.2 kg.)

**LISTINGS** - UL listed to UL 1598, UL8750 and other U.S. and International safety standards. Suitable for wet locations.

This product, or selected versions of this product, meet the standards listed below. Please consult factory for your specific requirements.



LIGHT OUTPUT - XBAL											
		Lumens (Nominal)									Watts (Nominal)
		SP10			NFL25			FL40			
Moon White		NEMA Type	Lumens	LER	NEMA Type	Lumens	LER	NEMA Type	Lumens	LER	
	SS	3H x 3V	2129	101	4H x 3V	1592	76	4H x 4V	1636	78	
Cool White	HO	3H x 2V	2612	93	4H x 3V	1981	70	4H x 4V	2396	86	
	SS	3H x 3V	1936	94	4H x 4V	1814	89	4H x 4V	1773	87	
Neutral White	HO	3H x 3V	2646	97	4H x 4V	2253	82	4H x 4V	2287	84	
	SS	3H x 3V	1823	86	4H x 3V	1367	66	4H x 4V	1613	78	
Warm White	HO	3H x 3V	2185	79	4H x 3V	1720	62	4H x 4V	2001	73	
	SS	3H x 3V	1631	78	4H x 3V	1263	60	4H x 4V	1435	69	
	HO	3H x 3V	1984	71	4H x 3V	1589	57	4H x 4V	1862	66	

LED Chips are frequently updated therefore values may increase.



Project Name \_\_\_\_\_ Fixture Type \_\_\_\_\_  
Catalog # \_\_\_\_\_

1/29/15  
© 2015  
LSI INDUSTRIES INC.

# LSI LED BULLETS LARGE FLOOD (XBAL)

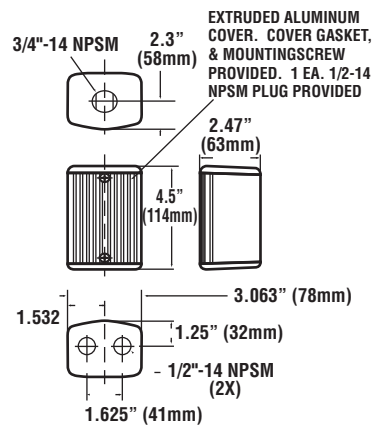
## PRODUCT ORDERING INFORMATION

TYPICAL ORDER EXAMPLE: **XBAL SP10 LED HO CW UE BRZ USC**

Prefix	Distribution	Light Source	Drive Current <sup>1</sup>	Color Temp <sup>2</sup>	Input Voltage	Finish	Shield/Lens Style
XBAL - LED Bullet - Large	SP10 - 10° Spot NFL25 - 25° Flood FL40 - 40° Flood	LED	HO - High Output SS - Super Saver	MW - Moon White (6000K) CW - Cool White (5000K) NW - Neutral White (4000K) WW - Warm White (3000K)	UE - Universal Electronic (120-277V)	BLK - Black BRZ - Bronze GPT - Graphite MSV - Metallic Silver PLP - Platinum Plus SVG - Satin Verde Green WHT - White	USC - Uplight Cast Shield Convex <sup>3</sup> USF - Uplight Cast Shield Flat <sup>3</sup> DSC - Downlight Cast Shield Convex <sup>4</sup> DSF - Downlight Cast Shield Flat <sup>4</sup>
							<b>ACCESSORIES</b>
							DIM - 0-10V Dimming JB1 - Architectural J-Box 1/2" Hub J35AH1 - Aluminum J-Box SPB - Mounting Spike PVC J-Box T - Tree Mount J-Box J4RSC - Single Canopy & 4" J-Box CFH LB - Composite J-Box w/ Hub Lid

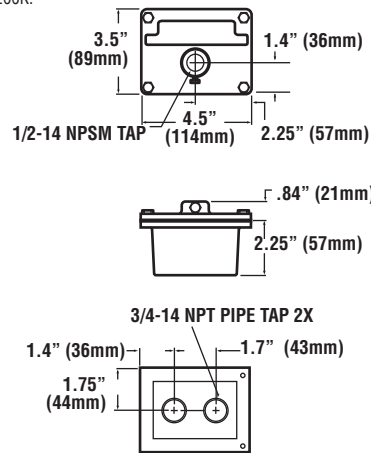
### NOTES:

1. Drive currents are HO = 450mA, SS = 350mA.
2. Color temperatures are MW = 6000K, CW = 5000K, NW = 4000K, WW = 3200K.
3. Uplight shields are 4" in length and provides 30 degree cut-off angle.
4. Downlight shields are 9" in length and provides 60 degree cut-off angle.

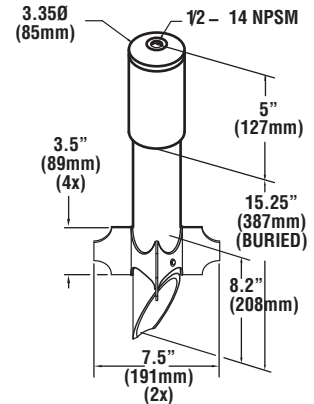


INTERIOR VOLUME 16.5 in

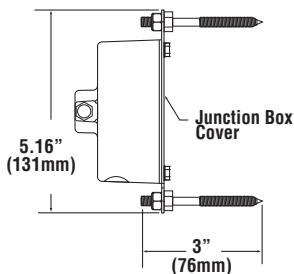
**JB1 Architectural J-Box**



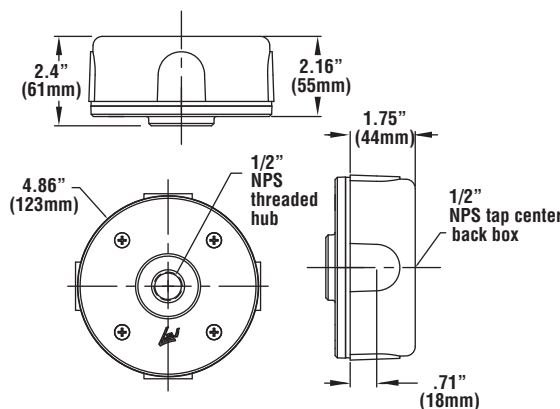
**J35AH1 Aluminum J-Box**



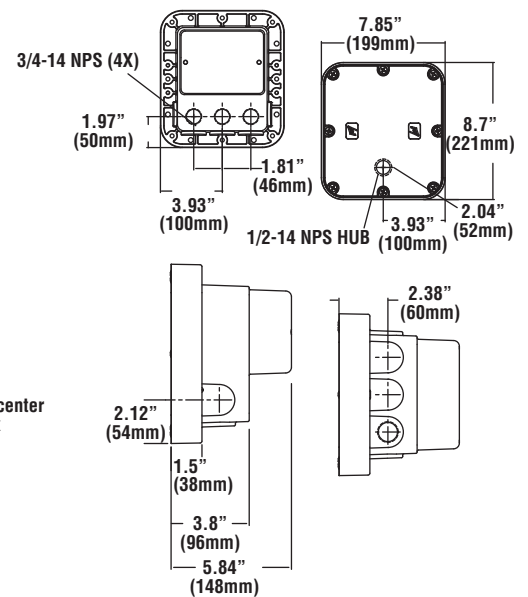
**(SPB) Heavy Duty PVC Spike J-Box**



**(T) Tree Mount J-Box**



**J4R SC or J4R SCE 4" J-Box**



**CFH LB Composite J-Box w/Hub Lid**



Project Name \_\_\_\_\_ Fixture Type \_\_\_\_\_  
Catalog # \_\_\_\_\_

1/29/15  
© 2015  
LSI INDUSTRIES INC.