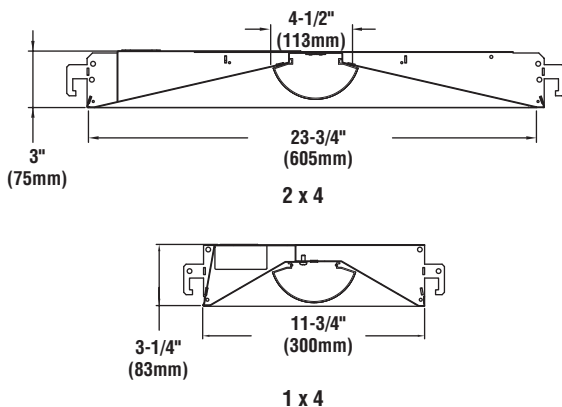


LED LOW PROFILE RECESSED TROFFER (LPASC)



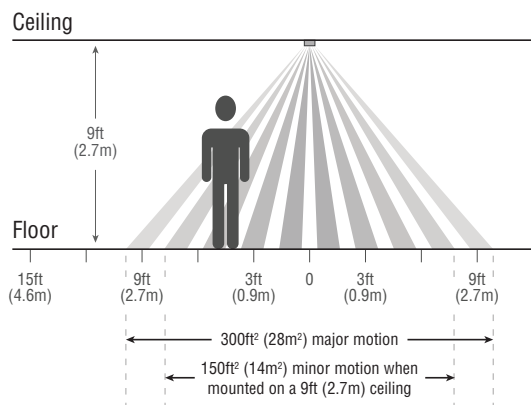
DIMENSIONS



	SS - Super Saver			HO - High Output			Watts	
	WW	NW	CW	WW	NW	CW	SS	HO
LPASC14 -(1X4)	3075	3295	3695	3580	3860	4330	29	35
LPASC22 -(2X2)	2810	3060	3430	3320	3620	4055	29	35
LPASC24 -(2X4)	3525	3790	4275	4320	4656	5185	36	46

LED Chips are frequently updated therefore values may increase.

AirLink™ ALOS AND ALVS COVERAGE PATTERN



PRODUCT HIGHLIGHTS

- Long life, high brightness LEDs virtually eliminate maintenance.
- RoHS compliant, recyclable "green" design contains no mercury or other hazardous materials.
- Cooler running electronic components allow for improved lumen performance.
- Direct/Indirect lighting delivers even illumination throughout the space.
- Available with AirLink™ wireless controls for maximum energy savings.

EXPECTED LIFE - Projected life of at least 60,000 hours. Contact factory for TM-21 detail.

LEDs - Use of closely spaced medium-power, high brightness chips minimizes pixelation and provides uniform lens luminance. Available in Cool White (5000K), Neutral White (4000K) and Warm White (3500K) color temperatures. CRI >= 80. LM_80 reports available.

HOUSING - Formed code-guage steel housing, painted after fabrication. Integral NEC-compliant earthquake clips are standard.

FINISH - All metal parts are painted after fabrication following treatment with phosphate rust inhibitor. Finish coating of housing reflecting surfaces is with high-reflectance (minimum 92%) matte white polyester powder. Matte white reflectors for soft indirect light distribution.

LENS - Frosted extruded acrylic lens with micro prisms for maximum diffusion, even illumination.

INSTALLATION - Unit simply lifts through grid ceiling and rests on T-bars. Wiring access/strain relief plate attaches with one screw, allowing connections to be made from below the ceiling.

ELECTRICAL - Universal voltage (120-277 Vac, 50/60 Hz input), Power factor > 0.9, THD < 20%, in-rush current < 15 Amps.

DRIVER - High-performance driver features over-voltage, under voltage, short-circuit and over temperature protection. Class A sound rating. 0-10 volt dimming (1% - 100%) standard.

AirLink™ - LSI AirLink™ controls featuring Lutron® Clear Connect makes each luminaire controllable, creating a wireless communication with other AirLink™ control devices such as dimmers, switches, occupancy sensors and photocontrols. The integrated sensor is both a passive infrared motion detector and photocell. The photocell provides a simple out-of-the-box daylight harvesting solution. The motion detector uses exclusive Lutron XCT™ technology which provides fine motion detection and 360° sensor field-of-range.

OPERATING TEMPERATURE - -40°C - +40°C (-40°F - +104°F)

WARRANTY - Limited 5-year warranty.

PHOTOMETRICS - Please visit our web site at www.lsi-industries.com for detailed photometric data.

LISTING - Listed to UL 1598 and UL 8750. Suitable For Damp Locations. IC Rated. For a list of the specific products in this series that are DLC listed, please consult the LED Lighting section of our website or the Design Lights website at www.designlights.org.

This product, or selected versions of this product, meet the standards listed below. Please consult factory for your specific requirements.



Project Name _____ Fixture Type _____
Catalog # _____

10/04/16
© 2016
LSI INDUSTRIES INC.

LED LOW PROFILE RECESSED TROFFER (LPASC)

LUMINAIRE ORDERING INFORMATION

TYPICAL ORDER EXAMPLE: **LPASC24 LED HO NW UE ALOS EM**

Prefix	Light Source	Output	Color Temperature	Line Voltage	Controls	Options
LPASC14 - (1x4) ¹ LPASC22 - (2x2) LPASC24 - (2x4)	LED	SS -Super Saver HO - High Output	CW - Cool White (5000K) NW - Neutral White (4000K) WW - Warm White (3500K)	UE - Universal Input Voltage (120-277V) 347 - 347V ²	Blank (none) ALC - AirLink™ Controller ALOS - AirLink™ Controller w/ Occupancy Sensor ALVS - AirLink™ Controller w/ Vacancy Sensor	EM - Emergency Battery FC1 - 6' 3/8" (3) #18 Leads (For Use In Non-Dimming Applications) FC15D - 6' 3/8" (5) #18 Leads (For Use In Dimming Applications) SD50 - Step Dimming to 50% L3D - Lutron Hi-lume 1% LDE1 - Lutron Hi-lume 1% (with Soft-On, Fade-to-Black) LDE5 - Lutron 5-Series

ACCESSORY ORDERING INFORMATION (Accessories are field installed)

Description	Order Number
Flange Kit - 1x4	FK14
Flange Kit - 2x2	FK22
Flange Kit - 2x4	FK24

AIRLINK™ CONTROL ACCESSORIES Order as separate catalog number. Visit <http://www.lsi-airlink.com> for complete listing of AirLink™ controls.

Wireless switches	Catalog number	Part Number	Wireless Occupancy Sensors	Part Number
On/Off & Raise Lower	ALWS 3B-(color)-KIT ³	624103CLR ³	Wireless 360° 400 ft², Ceiling Mount	624094
			Wireless 180° 3000 ft², Wall Mount	632617
Wireless Photocell controls	Catalog number	Part Number	Wireless 90° 2500 ft², Corner Mount	Part Number
On/Off & Dimming	ALCM-W-PC	624090	Wireless, Hallway 150 ft Length	632620
Commission Laser Kit (See Laser warnings)	AL-CLK	634574		

FOOTNOTES:

- 1 - LPASC14 not available with ALOS or ALVS
- 2 - Not available with AirLink
- 3 - Available colors are White, Ivory and Light Almond (WHT, IV, LA)

LASER Warnings:

- Warning: Eye injury and/or blindness hazard; avoid direct eye exposure to laser beam.
- Use of laser pointer is NOT recommended for use with AirLink products located near reflective surfaces.
 - Do NOT aim or shine laser pointers at any person, pet, vehicle, or aircraft directly, or through reflection by mirrors or other shiny surfaces.
 - Do NOT view the laser beam through binoculars, magnifying glass, or other optical devices.
 - Do NOT allow children to use laser pointers.
 - Read and follow the laser pointer manufacturer's instructions on safe use. In the event of injury, get medical attention immediately.



Project Name _____ Fixture Type _____
Catalog # _____

10/04/16
© 2016
LSI INDUSTRIES INC.