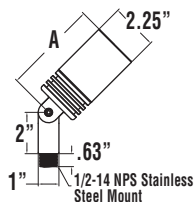


LED ALV MR16 SIGN LIGHTS (XALV SL) – LOW VOLTAGE

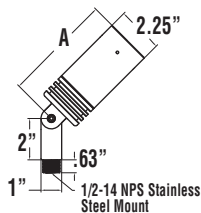


DIMENSIONS

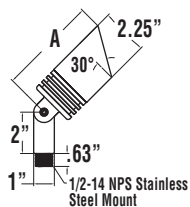
XALV SL LED16 HO SDDR/SSUF LOW VOLTAGE



XALV SL LED16 HO SCDR/SCUA LOW VOLTAGE



XALV SL LED16 HO S3DR/S3UF LOW VOLTAGE



XALV Dimensions - (Low Voltage)		A
XALV SL LED16 HO SDDR / SSUF		4.57" (116mm)
XALV SL LED16 SS SDDR / SSUF		3.84" (98mm)
XALV SL LED16 HO SCDR / SCUA		5.26" (134mm)
XALV SL LED16 SS SCDR / SCUA		4.58" (116mm)
XALV SL LED15 HO S3DR / S3UF		5.47" (139mm)
XALV SL LED15 SS S3DR / S3UF		4.80" (122mm)

Average watts

	HO	SS
	12W	9W

This product, or selected versions of this product, meet the standards listed below. Please consult factory for your specific requirements.



ARRA
Funding Compliant

IP66



Project Name _____ Fixture Type _____

Catalog # _____

SHIELD/LENS ASSEMBLY – Available in six combinations to maximize design flexibility. Shield is machined from premium alloys to match housing. Lenses are tempered glass. Select R – Recessed flat lens or F – Flush machined lens (for improved drainage).

SDDR – Short Shield – Recessed Lens; **SSUF** – Short Shield – Flush Lens;

SCDR – Collar Shield – Recessed lens and Aqueducts; **SCUA** – Collar Shield – Flush Lens and Aqueducts; **S3DR** – 30° Cutoff Shield – Recessed Lens; **S3UF** – 30° Cutoff Shield – Flush Lens

EXPECTED LIFE - Minimum 60,000 hours, depending upon the ambient operating temperature of the installation location.

LED MODULE - LED MR16 Low Voltage, Bi-Pin module offers a choice of 3 color temperatures; Neutral White (4000K), Warm White (3000K) and Very Warm (2700K), CRI>80 (nominal).

“HO” module features 4 “field selectable” light level equivalents of 50w, 35w, 20w & 10w, via an easily accessible push button.

“SS” module features 2 “field selectable” light level equivalents of 35w or 20w, via an easily accessible High/Low mode switch.

OPTICS / DISTRIBUTION - “HO” offers a choice of 3 beam patterns; Spot (SP) = 12°, Narrow Flood (NF) = 21°, Flood (FL) = 41° “SS” choices are Spot (SP) = 19°, Narrow Flood (NF) = 34°, Flood (FL) = 60°.

WIRING - Pre-wired with 250°C rated, 18 gauge, Teflon wire. 96” extended leads provided (SL).

HOUSING - Aluminum housing is CNC machined from premium 6061-T6 alum solid bar alloy.

MOUNTING - Rear mounted arm has a ½” NPSM threaded stainless steel knuckle for mounting to standard J-Box or mounts.

ELECTRICAL - 12V AC, 50/60 HZ input. Complies with UL8750 safety regulations and with ANSI/IEEE C62.41 Class A operation.

LED ENGINE - Provides on board circuitry that makes it compatible with 12V low voltage magnetic or electronic transformers. Phase dimmable.

TRANSFORMER - Required and must be ordered separately. Compatible with low voltage magnetic or electronic transformers.

OPERATING TEMPERATURE - -40°C to 55°C (-22°F to +104°F)

FINISH - Standard finishes are BRS - Bronze Smooth, WHS - White Smooth and BKS - Black Smooth. MSV - Metallic Silver, SVG - Satin Verde Green and Graphite are textured finishes. All finishes are in a UV resistant, thermoset polyester powder coat finish, which provides durable protection from environmental conditions, corrosion and the elements.

WARRANTY - Limited 5-year warranty.

EXTRA VALUE FEATURES:

- Premium aluminum alloys protected by a chromate conversion process and polyester powder coat finish, provide XALV Series with incredible corrosion resistance, ensuring a long life and trouble free operation.
- Precision O-ring sealing system between the lens and housing are high temperature silicone or Viton fluoroelastomer material, prevents dust and water ingress.
- Posi-Seal provides reliable protection against water and dirt intrusion. No RTV silicone is used to seal XALV fixtures.
- Available Spread Lenses, Color Filters, and Louvers expand performance.
- Waterproof wire connectors are provided with each low-voltage luminaire.

PHOTOMETRICS - Please visit our web site at www.lsi-industries.com for detailed photometric data.

SHIPPING WEIGHT - 3 lbs.

LISTINGS - UL listed to UL8750. Suitable for wet locations.

10/21/15

© 2015

LSI INDUSTRIES INC.

LED ALV MR16 SIGN LIGHTS (XALV SL) – LOW VOLTAGE

PRODUCT ORDERING INFORMATION

TYPICAL ORDER EXAMPLE: **XALV SL LED16 HO NW NF 12V S3DR SVG CH MS24 SLB90 S75T**

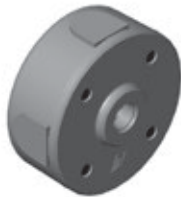
Prefix	Type	Light Source	Drive Current	Color Temp ⁴	Beam Angle ⁵	Voltage	Shield(s)	Finish	Mounting Accessories
XALV (LED ALV - Low Voltage)	SL - Sign ¹ Light	LED16	SS ² HO ³	NW - Neutral White (4000K) WW - Warm White (3000K) VW - Very Warm White (2700K)	SP - Spot Flood NF - Narrow Flood FL - Flood	12V - 12 volt ⁹	SSDR - Short Shield - Recessed Lens SSUF - Short Shield - Flush Lens SCDR - Collar Shield - Recessed Lens Aqueducts SCUA - Collar Shield - Flush Lens Aqueducts S3DR - 30° Cutoff Shield - Recessed Lens S3UF - 30° Cutoff Shield - Flush Lens	BKS - Black Smooth BRS - Bronze Smooth WHS - White Smooth SVG - Satin Verde Green Textured MSV - Metallic Silver Textured GPT - Graphite Textured	NO - None Mounting Stems MSXX - Straight Stem (Specify Length) 18", 24", 30", & 36" Mounting Brackets A90 - 90° Arm Bracket CH - Classic Hook Bracket TMA - Twin Mount Adaptor ⁷ SLB90 - Single 90° Sign Light Bracket TLB90 - Twin 90° Sign Light Bracket ⁷ Junction Box W/Xformer S75T - Single Canopyr & J-Box with 75w 120:12v Transformer ACCESSORIES⁶ CFX16 - MR16 Color Filters ⁹ HL16 - MR16 Hexcell Louvers LS16 - MR16 Linear Spread Lenses PS16 - MR16 Prismatic Spread Lenses CC250 - 250' Spool of 12-2 stranded Low Energy - Underground Cable

NOTES:

- SL - Sign Lights. Sign lights have 96" extended leads for use with mounting stems & brackets.
- 16 SS = MR16, 2-Position lamp featuring adjustable Hi/Lo switch, to replicate either 35w or 20w halogen light output levels.
- 16 HO = MR16, 4-Position lamp featuring adjustable button, to replicate four Halogen light output levels (10w, 20w, 35w or 50w).
- Color Temperatures; NW = 4,000K, WW = 3,000K, VW = 2,700K.
- Beam Angle (SS): SP = 19 degree, NF = 34 degree, FL = 60 degree.
(HO): SP = 12 degree, NF = 21 degree, FL = 41 degree.
- Only Single Accessory Can Be Installed in Shield
- TLB90 & TMA twin mounts supplied with 2ea identical XALV SL luminaires.
- Color Filters - Replace "X" with required filter color - R-Red, G-Green, B-Blue, Y-Yellow.
- Transformer is required.



A90 - 90° Arm



S75T Wall Mount with LV Transformer



CH - Classic Hook



MS - Straight Stem



UH - U Hook
180° Arm Bracket



TMA - Twin
Mount Adaptor



SLB90 - Single 90°
Sign Light Fitting



TLB90 - Twin 90°
Sign Light Fitting



Project Name _____ Fixture Type _____
Catalog # _____

10/21/15
© 2015
LSI INDUSTRIES INC.