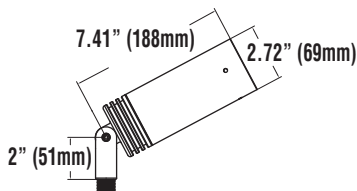


LED ALV PAR20 PATHWAY LIGHTS (XALV PL) – LINE VOLTAGE

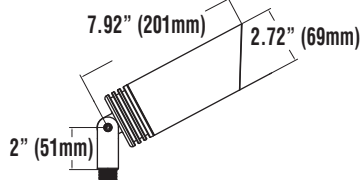


DIMENSIONS

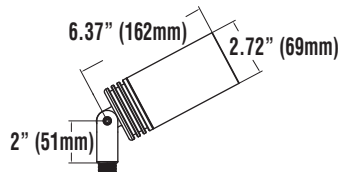
XALV PL PAR20 LED SCDR



XALV PL PAR20 LED S3DR



XALV PL PAR20 LED SSDR



Average Watts = 16W

SHIELD/LENS ASSEMBLY – Available in six combinations to maximize design flexibility. Shield is machined from premium alloys to match housing. Lenses are tempered glass. Select R – Recessed flat lens or F – Flush machined lens (for improved drainage).

SSDR – Short Shield – Recessed Lens; **SSUF** – Short Shield – Flush Lens

SCDR – Collar Shield – Recessed lens & Aqueducts; **SCUA** – Collar Shield – Flush Lens and Aqueducts; **S3DR** – 30° Cutoff Shield – Recessed Lens; **S3UF** – 30° Cutoff Shield – Flush Lens

EXPECTED LIFE - Minimum 60,000 hours, depending upon the ambient operating temperature of the installation location.

LED MODULE - LED PAR20 Line Voltage, module offers a choice of 3 color temperatures; Neutral White (4000K), Warm White (3000K) and Very Warm (2700K), CRI>80 (nominal). The lamp features 4 “field selectable” light levels of 100%, 80%, 55% & 18%, via an easily accessible push button.

OPTICS / DISTRIBUTION - Choice of 4 beam patterns; Spot (SP) = 15°, Narrow Flood (NF) = 23°, Flood (FL) = 35° and Wide Flood (WF) = 51°, that puts the light where it is needed, in the most efficient way possible. XALV Sign Lights are easy to adjust, aim and lock in place.

WIRING - Pre-wired with 200°C rated Tefzel wire. 96” extended leads are provided (PL).

HOUSING - Aluminum housing is CNC machined from premium 6061-T6 alum solid bar alloy.

MOUNTING - RM – Rear Mount arms have a ½” NPSM threaded stainless steel knuckle for attachment to J-box or mounts.

ELECTRICAL - 120 VAC, 50/60 HZ input. Complies with UL8750 safety regulations and with ANSI/IEEE C62.41 Class A operation.

LED ENGINE - Powered by a fully integrated, constant current, line voltage Class 2 LED driver, with active power factor correction. Phase dimmable.

OPERATING TEMPERATURE - -40°C to 55°C (-40°F to +131°F)

FINISH - Standard finishes BRS - Bronze Smooth, WHS – White Smooth and BKS – Black Smooth. MSV – Metallic Silver, SVG – Satin Verde Green and Graphite are textured finishes. All finishes are in a UV resistant, thermoset polyester powder coat finish, which provides durable protection from environmental conditions, corrosion and the elements.

WARRANTY - Limited 5-year warranty.

EXTRA VALUE FEATURES:

- Premium aluminum alloys protected by a chromate conversion process and polyester powder coat finish, provide XALV Series with incredible corrosion resistance, ensuring a long life and trouble free operation.
- Precision O-ring sealing system between the lens and housing are high temperature silicone or Viton fluoroelastomer material, prevents dust and water ingress.
- Posi-Seal provides reliable protection against water and dirt intrusion. No RTV silicone is used to seal XALV fixtures.
- Available Spread Lenses, Color Filters, and Louvers expand performance.
- Shield/Lens combinations give designers unequalled choice and flexibility.

PHOTOMETRICS - Please visit our web site at www.lsi-industries.com for detailed photometric data.

SHIPPING WEIGHT - 5 lbs.

LISTINGS - UL listed to UL8750. Suitable for wet locations.

This product, or selected versions of this product, meet the standards listed below. Please consult factory for your specific requirements.



Project Name _____ Fixture Type _____
Catalog # _____

10/21/15
© 2015
LSI INDUSTRIES INC.

LED ALV PAR20 PATHWAY LIGHTS (XALV PL) – LINE VOLTAGE

PRODUCT ORDERING INFORMATION

TYPICAL ORDER EXAMPLE: **XALV PL LED20 NW FL 120V S3UF MSV SPB**

Prefix	Type	Light Source	Color Temp ³	Beam Angle ⁴	Voltage	Shield(s)	Finish	Mounting Accessories
XALV (LED ALV - Line Voltage)	PL ¹ - Pathway Light	LED20 ²	NW - Neutral White (4000K) WW - Warm White (3000K) VW - Very Warm White (2700K)	SP - Spot Flood MF - Medium Flood FL - Flood WF - Wide Flood	120V	SSDR - Short Shield - Recessed Lens SCDR - Collar Shield - Recessed Lens Aqueducts S3DR - 30° Cutoff Shield - Recessed Lens	BKS - Black Smooth BRS - Bronze Smooth WHS - White Smooth SVG - Satin Verde Green Textured MSV - Metallic Silver Textured GPT - Graphite Textured	NO - None Mounting Stems MSXX - Straight Stem (Specify Length) 18", 24", 30", & 36" Mounting Brackets TMA - Twin Mount Adaptor SLB90 - Single 90o Sign Light Bracket TLB90 - Twin 90o Sign Light Bracket A90 - 90° Arm Bracket UH - U-Hook 180° Arm bracket Mounting Spikes SPB - Heavy Duty Spike for Line or Low JEP12 - 12" PVC Ground Conduit Mount JEP18 - 18" PVC Ground Conduit Mount Junction Boxes CFH LB - Composite Grade Mount J-Box ACCESSORIES⁵ CFX20 - PAR20 Color Filters ⁷ HL20 - PAR20 Hexcell Louvers LS20 - PAR20 Linear Spread Lenses PS20 - PAR20 Prismatic Spread Lenses

NOTES:

- Specify PL - Pathway Lights have extended leads for use with mounting stems & brackets.
- PAR20 - Lamp provides choice of 4 field selectable light levels: 100%, 80%, 55% & 18%.
- Color Temperatures; NW = 4,000k, WW = 3,000k, VW = 2,700k.
- Beam Angle: SP = 15 degrees, NF = 23 degrees, FL = 35 degrees, WF = 51 degrees.
- Only Single Filter/Louver Accessory Can Be Installed in Shield
- TLB90 & TMA twin mounts supplied with 2ea identical XALV PL luminaires.
- Color Filter - Replace "X" with required filter color - R-Red, G-Green, B-Blue, Y-Yellow.



**TMA - Twin
Mount Adaptor**



**SLB90 – Single 90°
Sign Light Fitting**



**TLB90 – Twin 90°
Sign Light Fitting**



MS - Straight Stem



A90 - 90° Arm



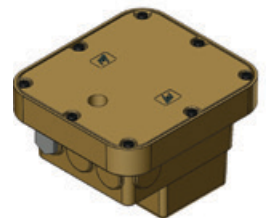
**UH - U Hook
180° Arm Bracket**



**JEP -
Mounting Spike
Junction Box**



Spike (SPB)



CFH LB



Project Name _____ Fixture Type _____

Catalog # _____

10/21/15

© 2015
LSI INDUSTRIES INC.