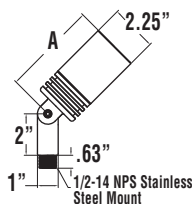


LED ALV MR16 PATHWAY LIGHTS (XALV PL) – LOW VOLTAGE

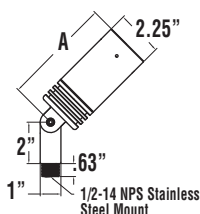


DIMENSIONS

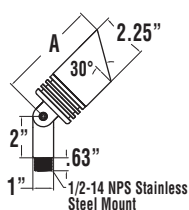
**XALV PL LED16 HO
SSDR/SSUF LOW VOLTAGE**



**XALV PL LED16 HO
SCDR/SCUA LOW VOLTAGE**



**XALV PL LED16 HO
S3DR/S3UF LOW VOLTAGE**



XALV Dimensions - (Low Voltage)		A
XALV PL LED16 HO SSDR / SSUF		4.57" (116mm)
XALV PL LED16 SS SSDR / SSUF		3.84" (98mm)
XALV PL LED16 HO SCDR / SCUA		5.26" (134mm)
XALV PL LED16 SS SCDR / SCUA		4.58" (116mm)
XALV PL LED15 HO S3DR / S3UF		5.47" (139mm)
XALV PL LED15 SS S3DR / S3UF		4.80" (122mm)

Average watts

	HO	SS
	12W	9W

This product, or selected versions of this product, meet the standards listed below. Please consult factory for your specific requirements.



ARRA
Funding Compliant

IP66



Project Name _____ Fixture Type _____

Catalog # _____

SHIELD/LENS ASSEMBLY – Available in six combinations to maximize design flexibility.

Shield is machined from premium alloys to match housing. Lenses are tempered glass. Select R – Recessed flat lens or F – Flush machined lens (for improved drainage).

SSDR – Short Shield – Recessed Lens; **SSUF** – Short Shield – Flush Lens;

SCDR – Collar Shield – Recessed lens and Aqueducts; **SCUA** – Collar Shield – Flush Lens and Aqueducts; **S3DR** – 30° Cutoff Shield – Recessed Lens; **S3UF** – 30° Cutoff Shield – Flush Lens

EXPECTED LIFE - Minimum 60,000 hours, depending upon the ambient operating temperature of the installation location.

LED MODULE - LED MR16 Low Voltage, Bi-Pin module offers a choice of 3 color temperatures; Neutral White (4000K), Warm White (3000K) and Very Warm (2700K), CRI>80 (nominal).

“HO” module features 4 “field selectable” light level equivalents of 50w, 35w, 20w & 10w, via an easily accessible push button.

“SS” module features 2 “field selectable” light level equivalents of 35w or 20w, via an easily accessible High/Low mode switch.

OPTICS / DISTRIBUTION - “HO” offers a choice of 3 beam patterns; Spot (SP) = 12°, Narrow Flood (NF) = 21°, Flood (FL) = 41° “SS” choices are Spot (SP) = 19°, Narrow Flood (NF) = 34°, Flood (FL) = 60°.

WIRING - Pre-wired with 250°C rated, 18 gauge, Teflon wire. 96” extended leads provided (PL).

HOUSING - Aluminum housing is CNC machined from premium 6061-T6 alum solid bar alloy.

MOUNTING - Rear mounted arm has a 1/2” NPSM threaded stainless steel knuckle for mounting to standard J-Box or mounts.

ELECTRICAL - 12V AC, 50/60 HZ input. Complies with UL8750 safety regulations and with ANSI/IEEE C62.41 Class A operation.

LED ENGINE - Provides on board circuitry that makes it compatible with 12V low voltage magnetic or electronic transformers. Phase dimmable.

TRANSFORMER - Required and must be ordered separately. Compatible with low voltage magnetic or electronic transformers.

OPERATING TEMPERATURE - -40°C to 55°C (-22°F to +131°F)

FINISH - Standard finishes are BRS - Bronze Smooth, WHS – White Smooth and BKS – Black Smooth. MSV – Metallic Silver, SVG – Satin Verde Green and GPT – Graphite are textured finishes. All finishes are in a UV resistant, thermoset polyester powder coat finish, which provides durable protection from environmental conditions, corrosion and the elements.

WARRANTY - Limited 5-year warranty.

EXTRA VALUE FEATURES:

- Premium aluminum alloys protected by a chromate conversion process and polyester powder coat finish, provide XALV Series with incredible corrosion resistance, ensuring a long life and trouble free operation.
- Precision O-ring sealing system between the lens and housing are high temperature silicone or Viton fluoroelastomer material, prevents dust and water ingress.
- Posi-Seal provides reliable protection against water and dirt intrusion. No RTV silicone is used to seal XALV fixtures.
- Shield/Lens combinations give designers unequalled choice and flexibility.
- Available Spread Lenses, Color Filters, and Louvers expand performance.
- Waterproof wire connectors are provided with each low-voltage luminaire.

PHOTOMETRICS - Please visit our web site at www.lsi-industries.com for detailed photometric data.

SHIPPING WEIGHT - 3 lbs.

LISTINGS - UL listed to UL8750. Suitable for wet locations.

10/21/15

© 2015

LSI INDUSTRIES INC.

LED ALV MR16 PATHWAY LIGHTS (XALV PL) – LOW VOLTAGE

PRODUCT ORDERING INFORMATION

TYPICAL ORDER EXAMPLE: **XALV PL LED20 NW FL 120V S3UF MSV SPB**

Prefix	Type	Light Source	Drive Current	Color Temp ⁴	Beam Angle ⁵	Voltage	Shield(s)	Finish	Mounting Accessories
XALV (LED ALV - Line Voltage)	PL ¹ - Pathway Light	LED16	SS ² HO ³	NW - Neutral White (4000K) WW - Warm White (3000K) VW - Very Warm White (2700K)	SP - Spot NF - Narrow Flood FL - Flood	12V - 12 volt	SSDR - Short Shield - Recessed Lens SCDR - Collar Shield - Recessed Lens Aqueducts S3DR - 30° Cutoff Shield - Recessed Lens	BKS - Black Smooth BRS - Bronze Smooth WHS - White Smooth SVG - Satin Verde Green Textured MSV - Metallic Silver Textured GPT - Graphite Textured	NO - None Mounting Stems MSXX - Straight Stem (Specify Length) 18", 24", 30", & 36" Mounting Brackets TMA - Twin Mount Adaptor SLB90 - Single 90° Sign Light Bracket TLB90 - Twin 90° Sign Light Bracket A90 - 90° Arm Bracket UH - U-Hook 180° Arm bracket Mounting Spikes SPP - ABS Spike for Low Voltage fixtures SPB - Heavy Duty Spike for Line or Low MTP12 - 12" PVC Ground Conduit Mount with 120/12v Stepdown Xformer MTP18 - 18" PVC Ground Conduit Mount with 120/12v Stepdown Xformer ACCESSORIES⁶ CFX16 - MR16 Color Filters ⁸ HL16 - MR16 Hexcell Louvers LS16 - MR16 Linear Spread Lenses PS16 - MR16 Prismatic Spread Lenses CC250 - 250' Spool of 12-2 stranded Low Energy - Underground Cable

NOTES:

- Specify PL - Pathway Lights have extended leads for use with mounting stems & brackets.
- 16 SS = MR16, 2-Position lamp featuring adjustable Hi/Lo switch, to replicate either 35w or 20w Halogen light output levels.
- 16 HO = MR16, 4-Position lamp featuring button, to replicate four Halogen light output levels (10w, 20w, 35w or 50w).
- Color Temperatures: NW = 4,000k, WW = 3,000k, VW = 2,700k.
- Beam Angle (SS): SP = 19 degree, NF = 34 degree, FL = 60 degree. (HO): SP = 12 degree, NF = 21 degree, FL = 41 degree.
- Only Single Filter/Louver Accessory Can Be Installed in Shield.
- TLB90 & TMA twin mounts supplied with 2ea identical XALV PL luminaires.
- Color Filter - Replace "X" with required filter color - R-Red, G-Green, B-Blue, Y-Yellow.
- Transformer is required.



TMA - Twin Mount Adaptor



SLB90 - Single 90° Sign Light Fitting



TLB90 - Twin 90° Sign Light Fitting



MS - Straight Stem



A90 - 90° Arm



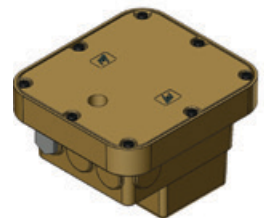
UH - U Hook 180° Arm Bracket



JEP - Mounting Spike Junction Box



Spike (SPB)



CFH LB



Project Name _____ Fixture Type _____
Catalog # _____

10/21/15
© 2015
LSI INDUSTRIES INC.