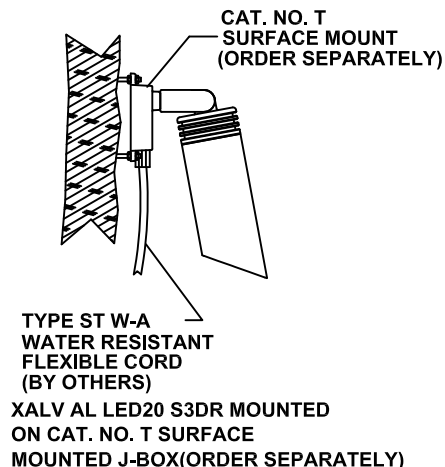


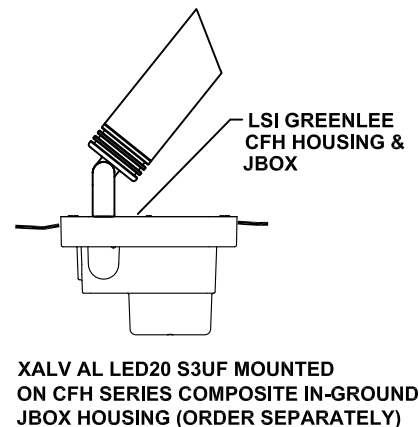
XALV AL/SL LINE VOLTAGE INSTALLATION INSTRUCTIONS

- WARNING:** BEFORE PROCEEDING, READ ALL INSTRUCTIONS CAREFULLY TO INSURE PROPER AND SAFE INSTALLATION.
- WARNING:** RISK OF FIRE OR ELECTRICAL SHOCK. DISCONNECT POWER BEFORE INSTALLING OR SERVICING.
- WARNING:** RISK OF ELECTRICAL SHOCK. HIGH TEMPERATURES INSIDE LUMINAIRE. MAKE CERTAIN LINE VOLTAGE CORRESPONDS WITH LED MODULES INPUT VOLTAGE. (SEE LED MODULE MARKINGS LABEL)
- WARNING:** ALL WIRING TO BE PERFORMED PER NATIONAL ELECTRICAL CODE AND LOCAL CODE BY A QUALIFIED ELECTRICIAN.
- IMPORTANT:** WHEN SERVICING, ALWAYS WEAR EYE PROTECTION. MAKE SURE AREA BELOW FIXTURE IS CLEAR.
- NOTE:** IF LED MODULE IS DIRTY, OPERATING HOURS AND PERFORMANCE WILL SIGNIFICANTLY DECREASE.
- NOTE:** FIELD MOUNTING CONNECTIONS ARE TO BE MADE IN SUCH A MANNER SO AS TO EXCLUDE WATER FROM WIRE WAY & JUNCTION BOX. CAULKING UNEVEN SURFACES SUCH AS MASONRY DURING WALL MOUNTING MAY BE NEEDED.

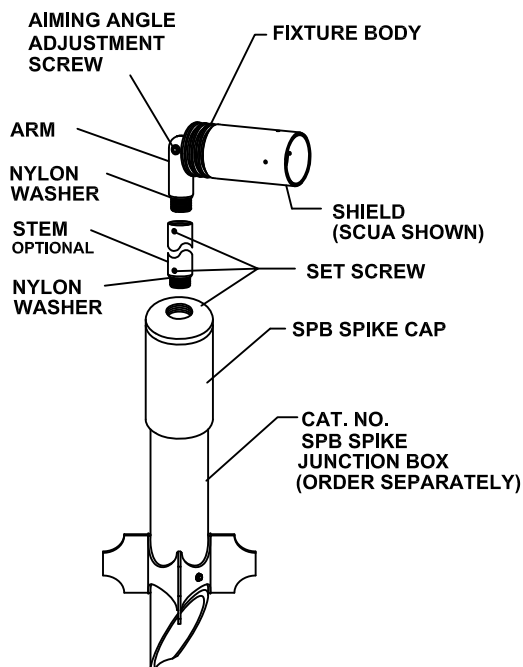
TREE MOUNTING



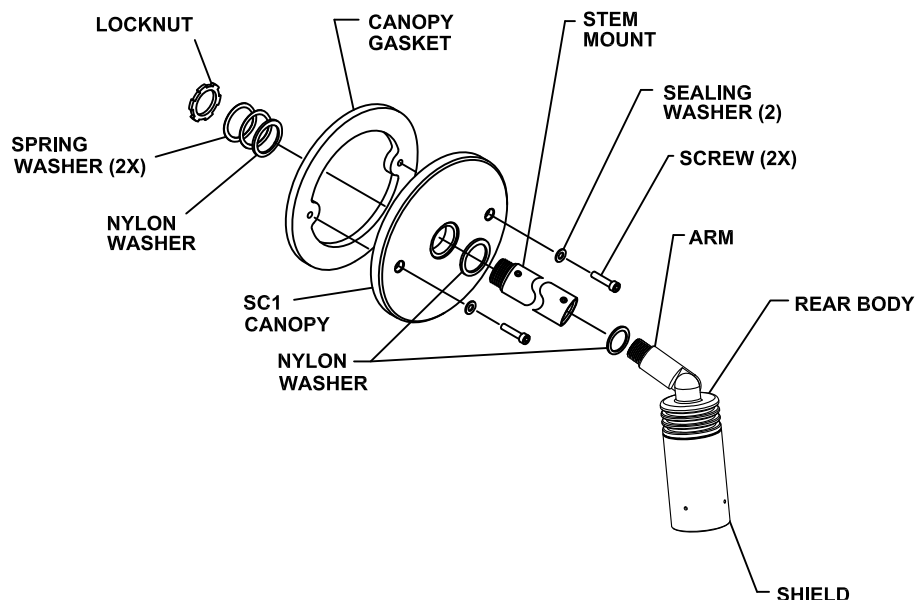
GROUND MOUNTING



SPIKE MOUNTING



WALL CANOPY MOUNTING



**INSTALLATION QUESTIONS?
CALL LSI FIELD SERVICE
800-436-7800 EXT 3300
FAX 513-984-9723**

XALV AL/SL LINE VOLTAGE INSTALLATION INSTRUCTIONS

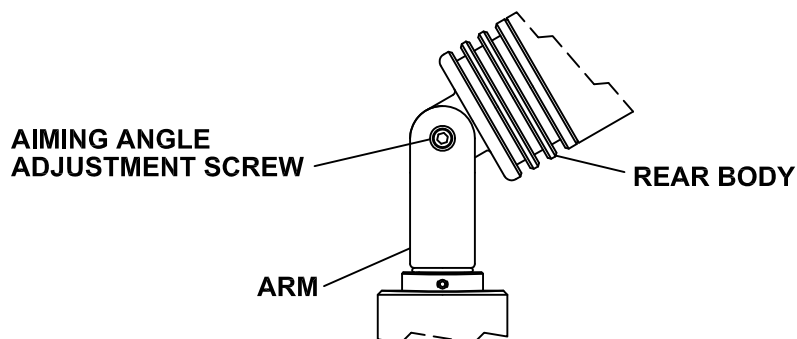
SERVICING XALV AL/SL LED20 MODULE



XALV AL/SL LED MODULE SERVICE:

1. TURN OFF POWER BEFORE SERVICING.
2. REMOVE FIXTURE FROM JUNCTION BOX OR MOUNT. REMOVE SHIELD BY ROTATING COUNTER CLOCKWISE TO ACCESS LED MODULE. REMOVE SCREWS RETAINING LED MODULE TO FIXTURE BODY.
3. REMOVE SILICONE WIREWAY SEAL BY SLIDING IT OFF OF THE FIXTURE LEADS.
4. LOOSEN GROUND WIRE RETAINING SCREW, & RETAIN SCREW FOR REPLACEMENT.
5. PULL OLD MODULE UP AND SLIDE LEADS OUT FROM WIREWAY.
6. INSTALL NEW MODULE BY ROUTING LEADS THRU WIREWAY, REPLACE GROUND & TIGHTEN, REPLACE WIREWAY SEAL, TIGHTEN LED MODULE RETAINING SCREWS, REPLACE SHIELD BY ROTATING CLOCKWISE UNTIL FULLY TIGHTENED. LUBRICATE SHIELD O-RING SEAL WITH DOW CORNING 55 IF NEEDED. CLEAN SHIELD LENS WITH VINEGAR TO REMOVE MINERAL SCALE. CLEAN LENS AT LEAST ANNUALLY FOR OPTIMUM LIGHTING.
7. ADJUST LED20 MODULE BRIGHTNESS BETWEEN 100%, 80%, 55%, & 18% BY TOGGING LEVER SWITCH ON SIDE OF MODULE TO DESIRED BRIGHTNESS.

XALV AL/SL AIMING ANGLE ADJUSTMENT



XALV AL AIMING ANGLE ADJUSTMENT

1. LOOSEN ADJUSTMENT SCREW WITH 5/32 HEX KEY
2. TILT FIXTURE TO DESIRED AIMING ANGLE
3. TIGHTEN ADJUSTMENT SCREW WITH 5/32 HEX KEY
4. ROTATIONAL ADJUSTMENT LOCKED BY SET SCREW OR LOCKNUT, DEPENDING ON MOUNTING DEVICE.

FAILURE TO FOLLOW THE MANUFACTURER'S INSTRUCTIONS OR MAKING ANY MODIFICATIONS TO THE FIXTURE WILL AUTOMATICALLY VOID THE WARRANTY. FIXTURE FAILURES RESULTING FROM POOR MAINTENANCE OR POOR DRAINAGE WILL NOT BE COVERED BY THE WARRANTY.