

XALV LED Line and Low Voltage Lights

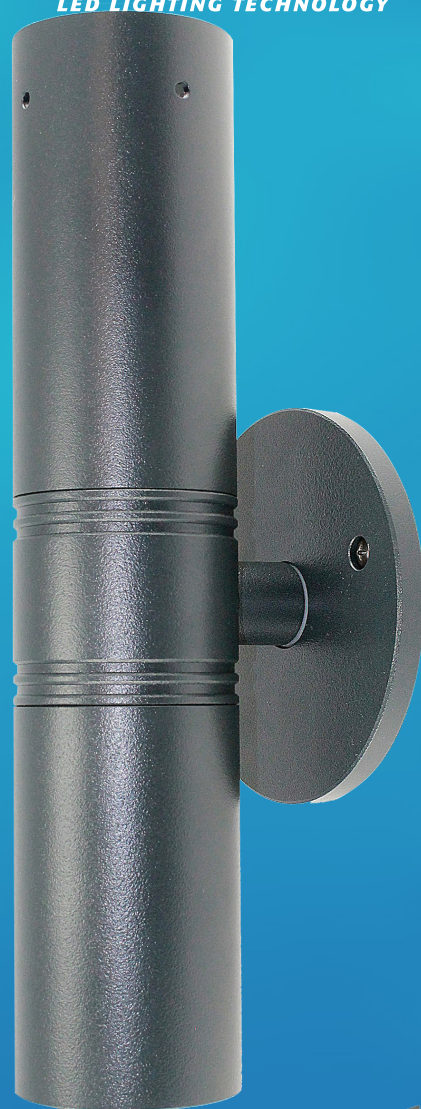
Leading Specification Features

Crossover®
LED LIGHTING TECHNOLOGY



Marketing Positioning Statement

Architecturally styled with powerful performance, XALV LED Architectural Wall Cylinders (WC), Accent Lights (AL), Pathway (PL) and Sign Lights (SL) are available in both low voltage MR16's and line voltage PAR20 lamp equivalents. XALV provides precise control to light landscape and architectural features such as sculptures, statues, signs, pathways, trees, shrubs and flowers. Machined from premium aluminum alloys, protected by a chromate conversion process and polyester powder coat finish, the XALV Series features incredible corrosion resistance ensuring long life and trouble free operation. The XALV's precision O-ring sealing system prevents dust and water ingress. Overall performance is expanded through available spread lenses, color filters and louvers, providing even more precise light control.



Superior Control Technology – Thermal Management

Thermal Management LEDSense®¹ Management system maximizes output while assuring long-term lumen maintenance via closed loop thermal control monitoring

Low-Voltage Transformers Integrated ‘Dynamic Transformer Recognition™¹ that allows the usage of standard cost-effective magnetic or electronic halogen transformers

Dimming (DIM) Low Voltage – compatible with standard low-voltage phase dimmers

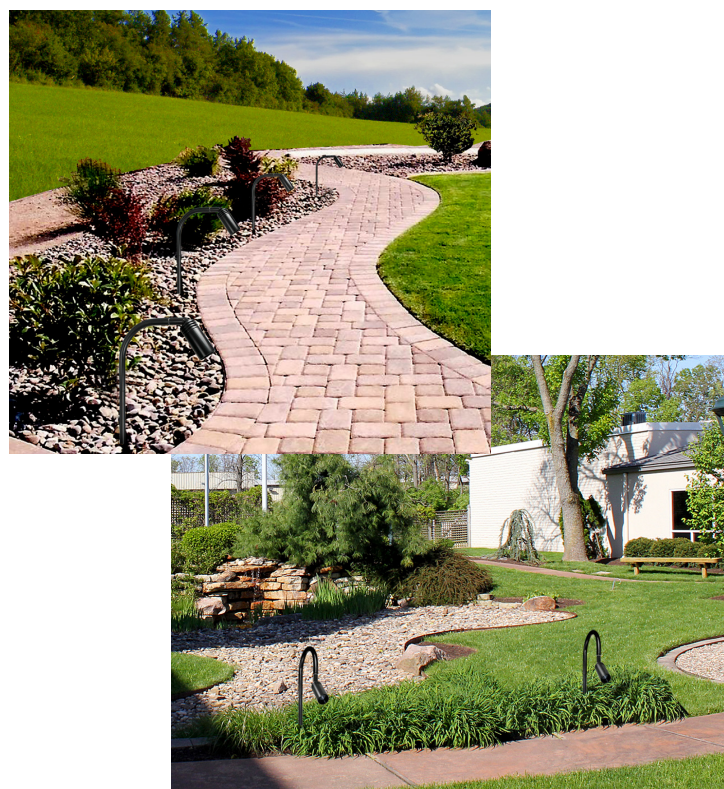
Line Voltage – compatible with phase-cut 120V dimmers

1 - Trademark of Terralux

Low Total Cost of Ownership – Quick Payback

Annual Energy & Maintenance Savings \$623 savings for (15) MR16 Low Voltage LED XALV fixtures replacing (15) MR16 HID fixtures

\$584 savings for (15) PAR20 Line Voltage LED XALV fixtures replacing (15) PAR20 HID fixtures



Wide Selection of Light Output Options

Distribution Options/ Drive Currents Multiple optics for enhanced performance

PAR20 Line Voltage - available in 15° Spot (SP), 23° Narrow Flood (NF), 35° Flood (FL) or 51° Wide Flood (WF)

- Features 4 “field selectable” light levels of 100%, 80%, 55% & 18% - via easily accessible push button on side of module

MR16 Low Voltage – available in Super Saver (SS) or High Output (HO)

- SS Module features HID light level equivalents of 35w or 20w - adjustable via easily accessible switch on side of module
- HO Module features HID light level equivalents of 50w, 35w, 20w or 10w – adjustable via easily accessible push button on side of module

Light Output Enhancements Available options include spread lenses, color filters and louvers

Color Rendering Index Nominal CRI of 80
Facilitates recognition of specific colors of various objects which are being illuminated

Color Temperature All XALV Series lighting available in Neutral white – 4000K, Warm white – 3000K or Very warm white – 2700K

Temperature Range -40°C to 55°C (-40°F to +131°F)

Suitable for a wide range of ambient temperatures

Input Voltage Low Voltage 12V AC or Line Voltage 120 VAC, 50/60 HZ input

Both comply with UL8750 safety regulations and ANSI/IEEE C62.41 Class A operation

Leading Specification Features

Speed & Ease of Installation

Mounting

Sign Lights (SL)/Accents Lights (AL)/ Pathway Lights (PL) supplied with rear mount arm with ½" NPSM threaded stainless steel connector for quick attachment to a wide variety of J-boxes, brackets, stems or spikes to meet site requirements

Lightweight

Low Voltage MR16 - 3 pounds

Line Voltage PAR20 - 5 pounds

Aids in installation time

Maintenance-Free

Once installed, XALV fixtures are virtually maintenance free



Exceptional Reliability in XALV Lighting

Housing

Aluminum, CNC machined from premium 6061-T6 aluminum solid bar alloy

Precision O-ring sealing system between lens and housing – prevents dust and water ingress

Posi-Seal - high temperature silicone or Viton fluorelastomer material provides reliable protection against water and dirt intrusion

Waterproof wire connectors – provided with low voltage luminaires

Shield machined from premium alloys to match housing

Shield/Lens Assembly

SL, PL and AL available in six combinations to maximize design flexibility

Wall Cylinders (WC) available in three combinations

Provides designers with superior choice and flexibility of light control

Listings

UL listed to UL8750

Suitable for wet locations

Finish

All finishes are in a UV resistant, thermoset polyester powder coat finish

Provides durable protection from environmental conditions, corrosion and elements

Resists cracking and peeling

Long-Life

Minimum 60,000 hours depending upon ambient temperature of installation location

Once installed, virtually maintenance free

Warranty

Limited 5-year warranty