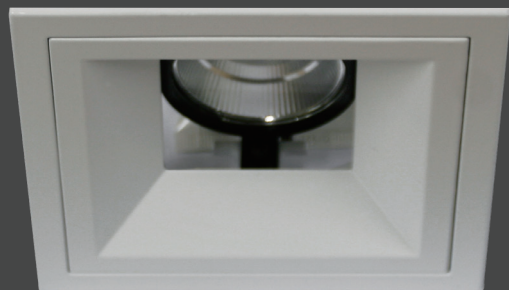


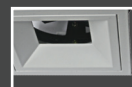


4" X 4" IC and Non-IC Square Splay Aperture Architectural LED

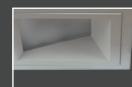
COMMERCIAL / ARCHITECTURAL



Straight Downlight (TSQ4FX)



Adjustable
(TSQ4AJ)

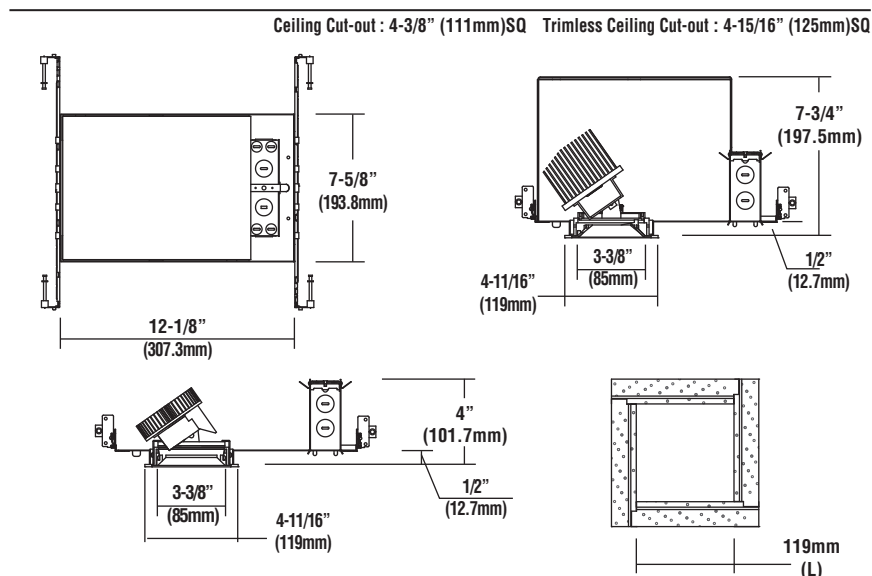


Wall Wash
(TSQ4WW)

LAD4SQ DESCRIPTION

4" X 4" IC and Non-IC Square Splay Aperture
Architectural LED

| | | | |
|---------------|---|------|------|
| LED Quantity | 1EA (COB) | | |
| Input Voltage | 120 or 277V | | |
| Wattage | 16W | 23W | 30W |
| Lumen | 900 | 1400 | 1700 |
| Efficacy LPW | 56 | 61 | 57 |
| Color | 3000K, 3500K, 4000K | | |
| CRI (typical) | 80 (standard) | | |
| Dimming | 0-10V Standard | | |
| Lamp Life | Rated for 50,000 hrs at 70% lumen maintenance | | |



Ordering Information

| Luminaire Prefix | Housing | Beam Spread | Light Engine Lumens | Source | Color Temp. | Voltage | Trim | Reflector Finish | Options |
|--|---|------------------------|------------------------------------|--------|--|--------------------------------|--|------------------|---|
| LAD4SQ - 4" X 4" Square Splay Aperture Architectural LED | TR - Non-IC rated housing with overlapping Trim | N - Narrow W - Wide | 09 - 900 14 - 1400 17 - 1700 | LED | 30 - 3000K 35 - 3500K 40 - 4000K | 120 or 277V (voltage specific) | TSQ4FX - Straight fixed with soft focus lens TSQ4AJ - Adjustable 0-30° tilt TSQ4WW - Wall Wash | WH - White | EM - Emergency Battery (Non-IC housing only) field installation |

SELECTION:

LAD4SQ **LED**

Example: LAD4SQ - TR - N - 09 - LED - 27 - 120 - TSQ4FX - WH - EM



Project Name _____ Fixture Type _____ Cat# _____

www.lsi-industries.com

5/16/17
© LSI INDUSTRIES INC.



4" X 4" IC and Non-IC Square Splay Aperture Architectural LED

COMMERCIAL / ARCHITECTURAL

SQUARE

LAD4SQ Features & Benefits

- Single wall aluminum housing, adjusts for ceiling up to 1-1/4" thick.
- Factory installed thermal protectors voltage specific. Select 120 or 277V input high efficacy drivers with dimming.
- Hanger bars and mounting channel brackets installed.
- All results are according to IESNA LM-79-2008 : Approved Method for the Electrical and Photometric Testing of Solid-State Lighting. LED chip provided with fixture are in compliance with LM80.
- Cast-aluminum trim frame painted and available overlap or flush mounting using with a square muddy frame.
- Heat sink aluminum cold forged, light weight also high efficacy of heat dissipation.
- Listing - cETLus Listed.
- Emergency battery back-up is sold separately; field installation required. Installed remote adjacent to the luminaire.



Project Name _____ Fixture Type _____ Cat# _____

www.lsi-industries.com

5/16/17
© LSI INDUSTRIES INC.