

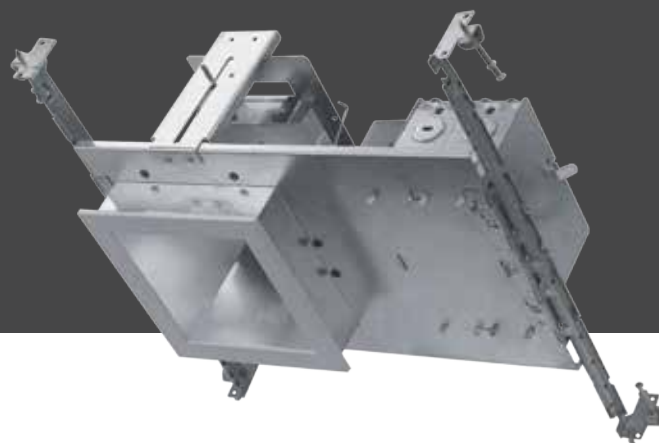


6" Square Architectural Downlight

COMMERCIAL / ARCHITECTURAL



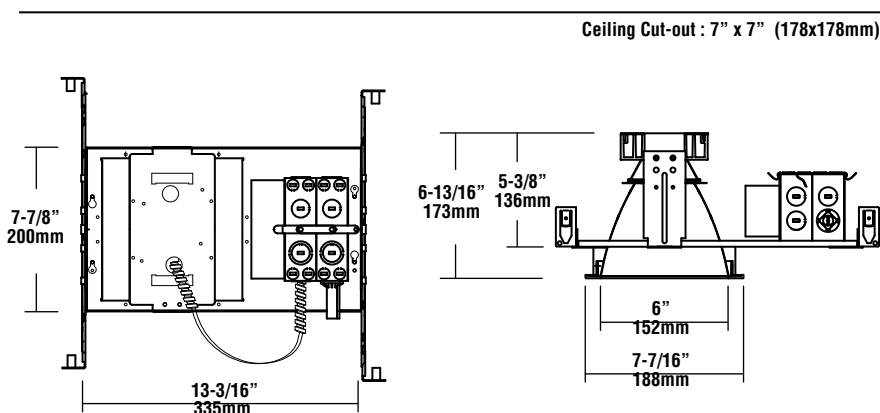
Open Straight Downlight (TSQ6)



LAD6SQ DESCRIPTION

6" Square Architectural Downlight

LED Quantity	1EA (COB)		
Input Voltage	120-277V AC		
Light Engine	12	17	27
Wattage	14W	23W	30W
Lumen	1200	1770	2700
Efficacy LPW	83	90	98
Color	2700K - 4000K		
CRI	80 (standard)		
Dimming	0-10V		
Lamp Life	Rated for 50,000 hrs at 70% lumen maintenance		



SQUARE

Ordering Information

Luminaire Prefix	Light Engine Lumens (nom.)	Source	Color Temp.	Beam Angle		Voltage	Trim	Reflector Finish	Trim Finish	Options
LAD6SQ - 6" x 6" Square Architectural Downlight	12 17 27	LED	27 - 2700K 30 - 3000K 35 - 3500K 40 - 4000K	12 26 - 26° Narrow Flood 48 - 48° Flood 69 - 69° Wide Flood	17, 27 23 - 23° Spot 35 - 35° Narrow Flood 52 - 52° Flood 75 - 75° Wide Flood	UE - Universal Input Voltage (120-277V)	TSQ6 - Open reflector	HAZ - Semi-diffused/Satin	WH - White	EM - Emergency Battery field installation

SELECTION:

LAD6SQ **LED**

Example: LAD6SQ - 27 - LED - 27 - 48 - 120 - TSQ6 - HAZ - WH - EM



Project Name _____ Fixture Type _____ Cat# _____

www.lsi-industries.com

5/9/17
© LSI INDUSTRIES INC.



6" Square Architectural Downlight

COMMERCIAL / ARCHITECTURAL

SQUARE

LAD6SQ Features & Benefits

- 20 gauge CRS black painted 6" X 6" square aperture housing adjusts for ceiling up to 1-1/4" thick.
- 120-277 input high efficiency drivers with capability to dim by;
 - 1) a TRIAC 120V electronic dimmer switch
 - 2) 0-10V dimmer switches.
- Semi-matte diffuse lower reflectors under the upper reflector.
- 60° cut-off to light source.
- Uniform color temperature to 3SDCM.
- Trims for straight downlight with flood lens.
- Light engine and driver can be replaced through aperture below ceiling.
- Provided listed J-box and adjustable height and mounting channel brackets.
- Listing - cETLus Listed.
- Emergency battery back-up is sold separately; field installation required. Installed remote adjacent to the luminaire.

Quick-connect Case

In anticipation of rapidly-changing LED technological advancements, this product includes a special light engine quick-disconnect feature. This enables easy upgrades, as well as changes to the heatsink, chip and driver without any tooling.



Triac Approved Dimmers

- Lutron: S-603PG, DVELV-303P, CT-103P, SELV-300P, DVCL-153P, DV-600P, MAELV-600, FAELV-500, TGCL-153P, TG-600P, S-600P, LG-600P, IPI06-1LZ, 6631-2, 6683-IW, IPE04, 6161, 6633-P, VPE06
- Cooper: SLC03P, DLC03P, DAL06P
- Lightolier: ZP260QEW

0-10V Approved Dimmers

- Lutron: Nova series (part number NFTV), Diva series (part number DVTV)
- Leviton: IllumaTech series (part number IP710-DL)

Consult factory for additional dimmers

Lutron, Nova and Diva are trademarks of Lutron Electronics Co., Inc. Leviton, Acenti, Trimatron and Decora are trademarks of Leviton Manufacturing Co., Inc.



Project Name _____ Fixture Type _____ Cat# _____

www.lsi-industries.com

5/9/17
© LSI INDUSTRIES INC.