



6" Commercial Frame-in Kit

ROUND



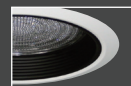
Baffle w/ Reflector (TR6B)



Open Reflector
(TR6R)



Wall Wash w/
Kick-off Plate
(TR6WW)



Baffled lens w/
Reflector
(TR6BL)

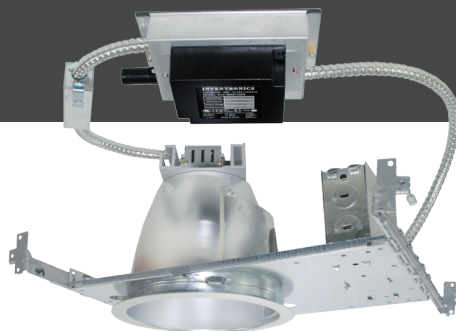


Reflector w/
Frosted Floating Lens
(TR6RFL)



Reflector w/
Regressed Lens
(TR6RL)

NOTE: All trims are damp location rated.
Regressed lens trims are wet location listed.

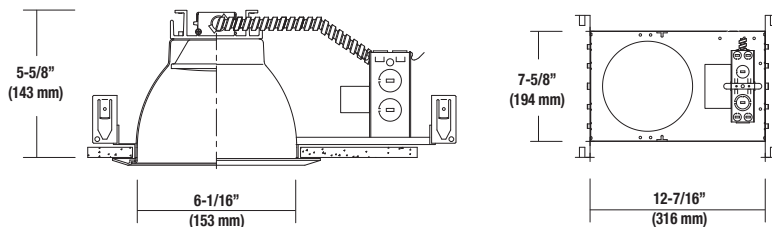


LCD6 DESCRIPTION

6" commercial frame-in kits (with LED module and integral reflector) are designed for use in non-insulated ceilings. Insulation material must be kept a minimum of 3" from fixture. Provided in high efficacy LED with dimmable driver and the special optical diffuser allows high lumen transmission and light uniformity.

LED Quantity	1EA(COB)			
Input Voltage	120-277V AC			
Light Engine	13	20	29	41
Wattage	14W	23W	30W	45W
Lumen	1321	2052	2934	4103
Efficacy LPW	95	90	90	97
Beam Angle°	48°	52°	52°	52°
Color	2700K - 4000K			
CRI	80 (standard)			
Dimming	0-10V Standard			
Lamp Life	Rated for 50,000 hrs at 70% lumen maintenance			

Ceiling Cut-out: 6-1/2"



Ordering Information

Luminaire Prefix	Light Engine Lumens (nom.)	Source	Color Temp.	Beam Angle		Voltage	Trim¹	Reflector Finish	Baffle	Optional Metal Trim Ring Finish	Options
LCD6 - 6" Architectural Downlight	13	LED	27 - 2700K	13	20,29,41	UE - Universal Input Voltage (120-277V)	TR6R - Open	(Self-Flanged)	BL - Black WH - White <div>NOTE: For use with TR6B & TR6BL only</div>	WH - White SN - Satin Nickel CH - Chrome AN - Antique Nickel AC - Antique Copper MO - Mocha CA - Cappuccino UN - Natural Steel PB - Polished Brass <div>NOTE: Not available with "SF" Option</div>	EM - Emergency Battery field installation
	20		30 - 3000K	22 - 22° Spot	23 - 23° Spot		TR6B - Baffle	SF HAZ - Semi Diffused / Satin³			
	29		35 - 3500K	26 - 26°	35 - 35°		TR6BL - Baffle Lens	SF SPC - Specular Clear³,⁴			
	41		40 - 4000K	Narrow Flood	Narrow Flood		TR6RL - Regressed Lens	SF CH - Champagne³ SF PW - Pewter³			
62 - 62° Wide Flood	75 - 75° Wide Flood	TR6RWW - Wall Wash	HAZ - Semi Diffused / Satin SPC - Specular Clear⁴	<div>Note: White plastic trim ring supplied standard. Optional metal trim rings available.</div>							

SELECTION:

LCD6

LED

Example: LCD6 - 41 - LED - 30 - 52 - UE - TR6R - SF - HAZ - EM

1- All trims are damp location rated. Regressed lens trims are wet location listed.
2- Accessories are field installed.

3 - Self Flanged reflectors available with open trims only.
4 - SPC finish not available with wall wash trims.



Project Name _____ Fixture Type _____ Cat# _____

www.lsi-industries.com

5/9/17
© LSI INDUSTRIES INC.



6" Commercial Frame-in Kit

LCD6 Features & Benefits

Mounting Frame

- Galvanized steel construction.
- Housing adjusts for ceilings up to 1-1/4" thick.

LED Module & Trim

- Aluminum extruded heat sink facilitates heat dissipation for maintaining constant light output, color and life of solid state components.
- Module construction includes LED, heat sink and lens.
- Heavy gauge aluminum reflector anodized in clear, haze, gold, champagne and pewter color finish. Reflectors provided with black and white milled groove baffle collar.
- Uniform color temperature within 3 SDCM.

Junction Box

- Listed for through-branch circuit wiring. (Max 8 No 12 AWG 90 branch-circuit conductors. [4 in, 4 out])
- (5) 1/2" knockouts with true pry-out slots and (4) knockouts with Romex cable clamp.
- Ground wire provided on J-box.

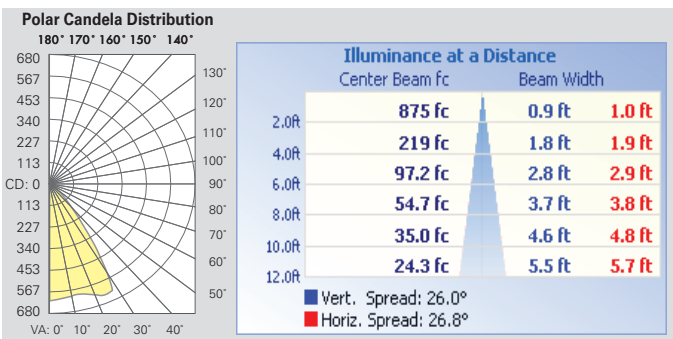
Bar Hangers

- 24" Bar Hangers provide stability and support on joists and T-Bar Grid ceilings.
- Housing can be positioned at any point within 24" joist span.
- Score lines allow adjustment for 12" joists without tools.

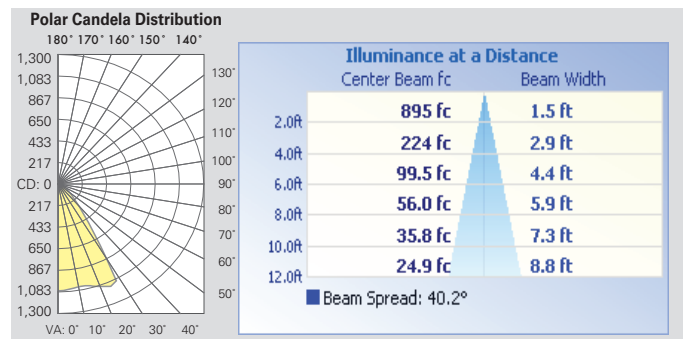
Warranty

- LSI LED Fixtures carry a limited 5-year warranty.

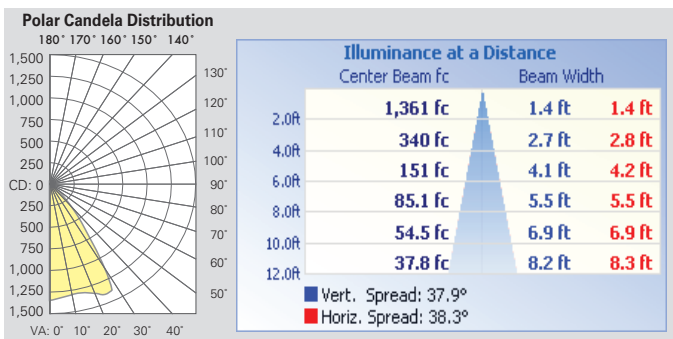
Photometrics (Contact factory for IES file)



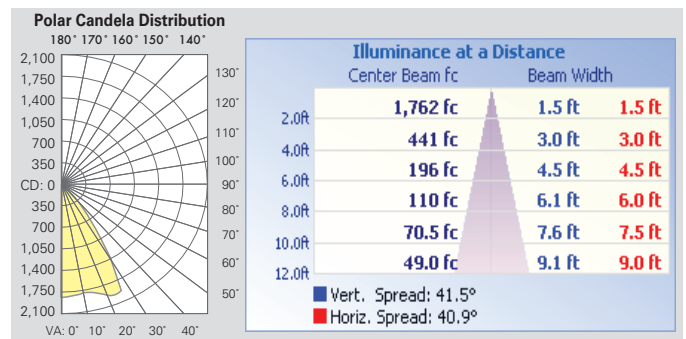
LAD6-13-LED



LAD6-20-LED



LAD6-29-LED



LAD6-45-LED

LED Power Supply Driver

- 120-277V input high efficacy drivers
- Compatible with Triac (forward-phase or leading edge) / ELV (reverse-phase or trailing edge) and 0-10V dimmers
- Triac dimming only at 120 Vac
- Deep dimming from 100% down to 1%
- Power factor >.90, THD <20% with integral thermal protection.
- Emergency battery back-up is sold separately; field installation required. Installed adjacent to the luminaire

- Driver mounts externally to the module, allowing future replacement, if needed.

Listings

- cETLus Listed
- State of California Title 24
- ENERGY STAR® Certified

Quick-connect Case

In anticipation of rapidly-changing LED technological advancements, this product includes a special light engine quick-disconnect feature. This enables easy upgrades, as well as changes to the heatsink, chip and driver without any tooling.



Approved Dimmers

- Lutron: NovaT(Ntelv300&600)
Diva(Dvelv-300P&303P)
Nova 0-10V (NTFTV)
Diva 0-10V (DVTV)

- Leviton: Acenti (Ate06-1Lw)
Trimatron #705V
Decora 0-10V (IP710DL)

Consult factory for additional dimmers

Lutron, Nova and Diva are trademarks of Lutron Electronics Co., Inc. Leviton, Acenti, Trimatron and Decora are trademarks of Leviton Manufacturing Co., Inc.



Project Name _____ Fixture Type _____ Cat# _____

www.lsi-industries.com

5/9/17
© LSI INDUSTRIES INC.

ROUND

COMMERCIAL FRAME-IN KIT