

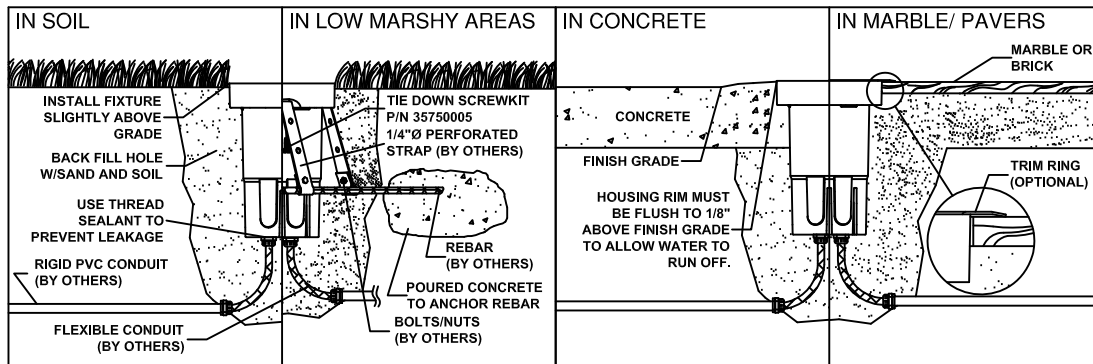
RDS INSTALLATION INSTRUCTIONS

- WARNING:** BEFORE PROCEEDING, READ ALL INSTRUCTIONS CAREFULLY TO INSURE PROPER AND SAFE INSTALLATION.
- WARNING:** RISK OF FIRE OR ELECTRICAL SHOCK. DISCONNECT POWER BEFORE INSTALLING OR SERVICING.
- WARNING:** RISK OF ELECTRICAL SHOCK. HIGH TEMPERATURES INSIDE LUMINAIRE. MAKE CERTAIN LINE VOLTAGE CORRESPONDS WITH BALLAST'S PRIMARY VOLTAGE. (SEE BALLAST LABEL)
- WARNING:** ALL WIRING TO BE PERFORMED PER NATIONAL ELECTRICAL CODE AND LOCAL CODE BY A QUALIFIED ELECTRICIAN.
- IMPORTANT:** WHEN LAMPING, ALWAYS WEAR EYE PROTECTION.
- NOTE:** IF LAMP IS INSTALLED DIRTY, OPERATING HOURS AND PERFORMANCE WILL SIGNIFICANTLY DECREASE.

TOOLS REQUIRED FOR INSTALLATION: #3 PNT PHILLIPS SCREWDRIVER
#2 PNT PHILLIPS SCREWDRIVER

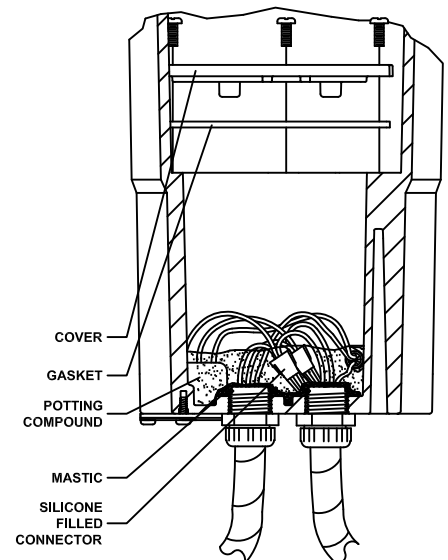
FIXTURE HOUSING INSTALLATION:

1. EXCAVATE HOLE APPROXIMATELY 15" IN DIAMETER. INSTALL CONDUIT FITTINGS USING TEFLON TAPE OR OTHER THREAD SEALANT.
2. INSTALL FIXTURE HOUSING PER APPROPRIATE BELOW.
3. BACK FILL HOLE WITH SAND AND SOIL FOR STABILITY. DO NOT BACK FILL WITH BARK OR VERMICULITE.



FIXTURE HOUSING WIRING:

1. PULL SUPPLY CONDUCTORS INTO JUNCTION BOX. MAKE CONNECTIONS WITH THE SILICONE-FILLED WIRE CONNECTORS PROVIDED.
2. SEAL CONDUIT ENTRIES FROM INSIDE THE JUNCTION BOX USING THE MASTIC PROVIDED.
3. MIX POTTING COMPOUND PER INSTRUCTIONS ON ENVELOPE. POT JUNCTION BOX MAKING CERTAIN THE CONNECTIONS ARE COVERED BY THE COMPOUND AS SHOWN.
4. INSTALL JUNCTION BOX COVER AND GASKET WITH THE FOUR SCREWS (PROVIDED) AS SHOWN. TORQUE SCREWS TO 30 IN./LBS. TORQUE FOR PROPER SEAL.
5. SEE PAGE 2 FOR FINISHING SECTION INSTALLATION DETAILS.



CAUTION:

FAILURE TO PROPERLY WIRE & ENCAPSULATE J-BOX WILL VOID WARRANTY!



A Company with a Smart Vision

**INSTALLATION QUESTIONS?
CALL LSI FIELD SERVICE
800-436-7800 EXT 3300
FAX 513-984-9723**

RDS INSTALLATION INSTRUCTIONS

CAUTION:
**FIXTURE HOUSING MUST BE FREE OF DIRT & MOISTURE PRIOR TO
INSTALLATION OF ALL FINISHING SECTION MODULES!**

FINISHING SECTION INSTALLATION:

1. HOUSING MUST BE FREE OF DIRT AND WATER! VACUUM AND WIPE ANY DIRT OR WATER FROM HOUSING. PLACE POWERPAK MODULE INSIDE OF FIXTURE HOUSING.
2. CONNECT THE 3-CIRCUIT MALE CONNECTOR ON THE FIXTURE HOUSING TO THE FEMALE CONNECTOR IN THE POWERPAK MODULE.
3. INSTALL ACCESS BARRIER PLATE ALIGNING CONNECTOR WITH OPENINGS IN PLATE. SECURE WITH SCREWS PROVIDED.
4. CONNECT THE 4-CIRCUIT MALE CONNECTOR FROM THE REFLECTOR ASSEMBLY TO THE FEMALE CONNECTOR IN THE POWERPAK.
5. AIM & ADJUST THE REFLECTOR ASSY ACCORDING TO INSTRUCTIONS PROVIDED WITH THE REFLECTOR ASSY.
6. INSTALL THE CORRECT LAMP. SEE POWERPAK & REFLECTOR FOR LAMP INFORMATION.
7. INSTALL LENS/GASKET SUB-ASSEMBLY. INSTALL LENS FRAME, OR ROCKGAURD, OR ROCKGUARD, OR DIRECTIONAL SHIELD PER INSTRUCTIONS PROVIDED IN THEIR SHIPPING CARTON.

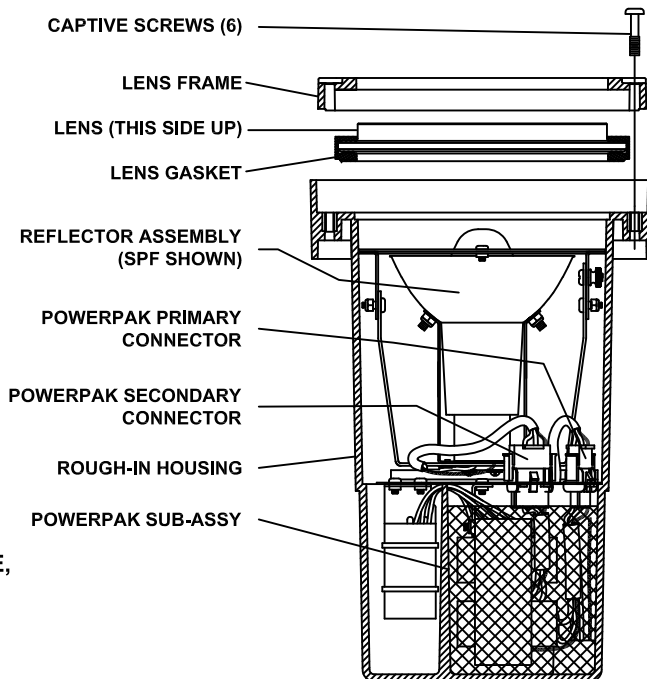
MAINTENANCE:



ACCUMULATED DEBRIS/MINERALS ON THE LENS WILL CAUSE EXCESSIVE HEAT BUILD-UP RESULTING IN PREMATURE LAMP FAILURE, FIXTURE FAILURE, OR FIRE. THE LENS MUST BE CLEANED REGULARLY WITH A MINERAL DISSOLVING CLEANER.

IT IS THE RESPONSIBILITY OF THE CONTRACTOR TO:

1. INSURE THE FIXTURE IS PROPERLY INSTALLED.
2. INSURE THE FIXTURE IS GROUNDED IN ACCORDANCE WITH APPLICABLE LOCAL, STATE, AND NATIONAL ELECTRICAL CODES.
3. DETERMINE THAT THE CORRECT LAMP, BALLAST, FIXTURE, AND VOLTAGE COMBINATION IS USED.
4. INSTRUCT THE OWNER IN THE REQUIRED MAINTENANCE.



**FAILURE TO FOLLOW THE MANUFACTURER'S INSTRUCTIONS
OR MAKING ANY MODIFICATIONS TO THE FIXTURE WILL
AUTOMATICALLY VOID THE WARRANTY. FIXTURE FAILURES
RESULTING FROM POOR MAINTENANCE WILL NOT BE
COVERED BY THE WARRANTY.**