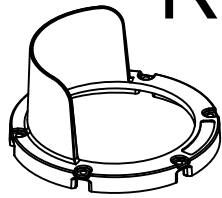
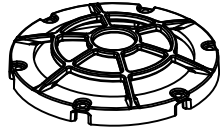


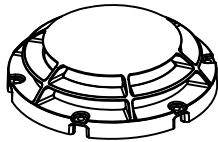
# RDB/S ACCESSORY RING INSTALLATION



RDS  
DSA/DSB



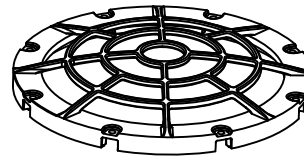
RDS  
RGA/RGB



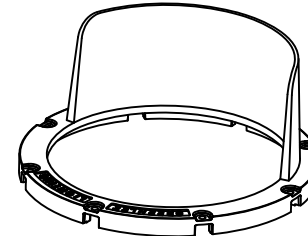
RDS  
DMA/DMB



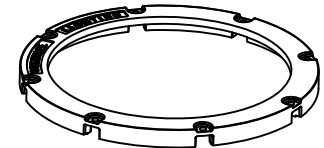
RDS  
ALR/BLR



RDB  
RGA/RGB

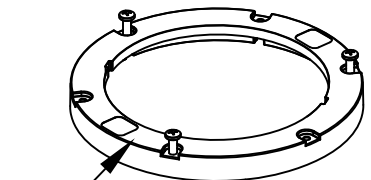
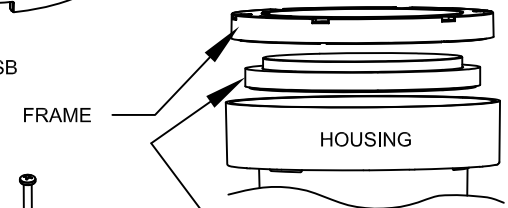
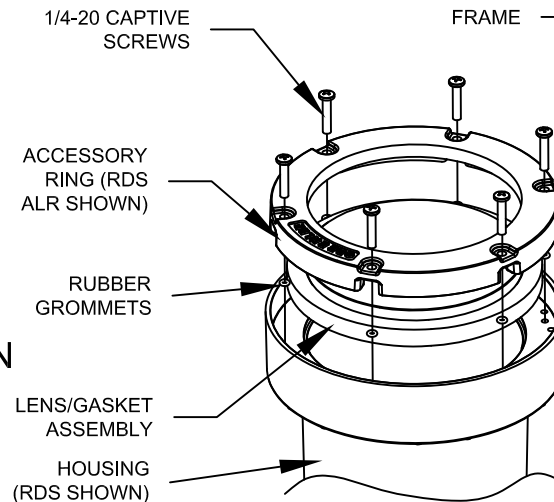


RDB  
DSA/DSB



RDB  
ALR/BLR

REMOVE COMPOSITE LENS RING, SUPPLIED WITH RIH ONLY. MAKE SURE GASKET SEATING SURFACE IS CLEAN AND INSTALL THE LENS/GASKET ASSEMBLY AND ACCESSORY RING. INSTALL 1/4-20 CAPTIVE SCREWS THROUGH HOLES IN ACCESSORY RING. SLIDE RUBBER GROMMETS ON THE CAPTIVE SCREWS TO SECURE THEM TO ACCESSORY RING. ALIGN SCREWS WITH BRASS INSERTS IN HOUSING. USING AN ALTERNATING TORQUE SEQUENCE, TIGHTEN ALL SCREWS UNTIL ACCESSORY RING SEATS AGAINST HOUSING. THE ACCESSORY RING MUST BE SEATED AGAINST THE HOUSING FOR PROPER SEAL!



INSTALLATION QUESTIONS?  
CALL LSI FIELD SERVICE  
800-436-7800 EXT 3300  
FAX 513-984-9723



A Company with a Smart Vision