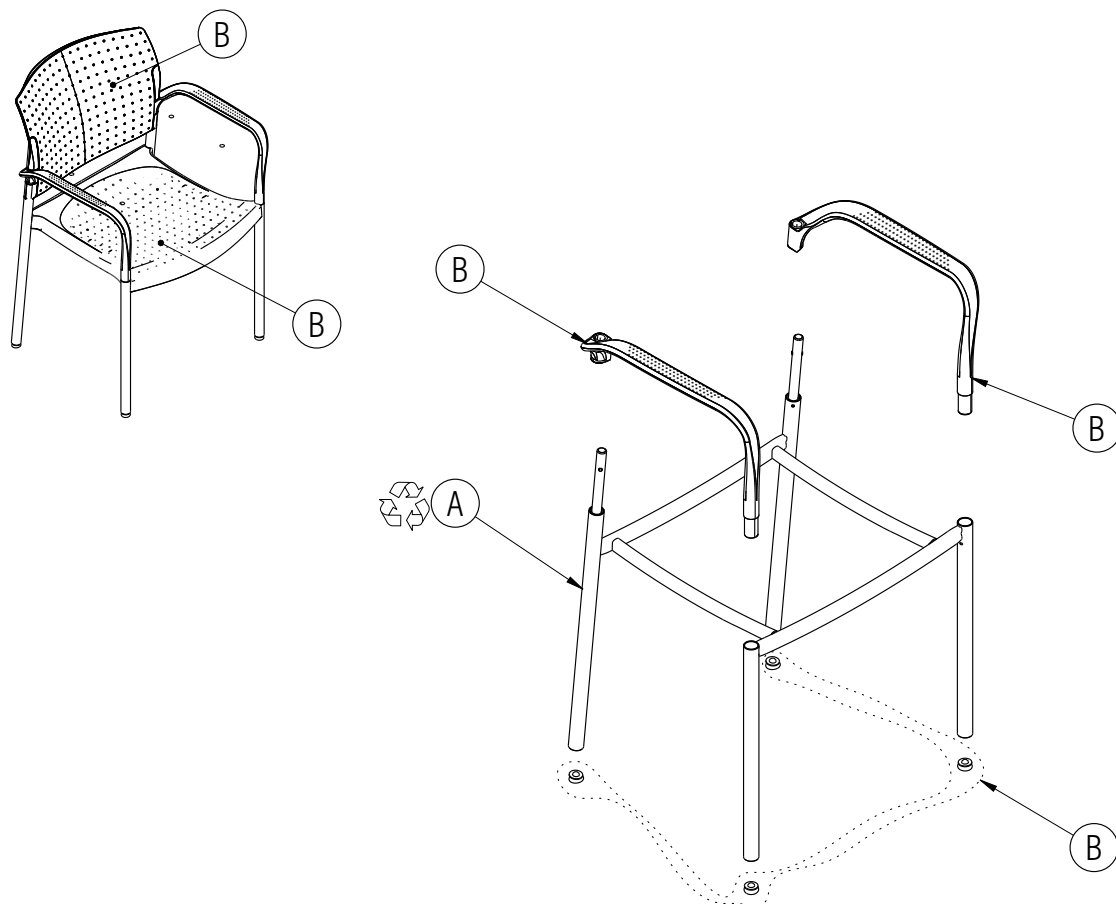


Disassembly Instructions

Rapture Chair

Material Type: A .Steel B. Plastic




Procedure:

1. Remove the screws holding the seat shroud to the seat and remove the shroud.
2. Remove the screws holding the armrests into the top of the front leg tubes and pull out the front of each armrest.
3. Rotate each armrest outwards to disengage the backrest lock. Pull the backrest and the armrests upwards to remove them from the frame.
4. Pry the out the glides from the ends of the leg tubes.

General Notes:

1. Disassembly time: 5-10 minutes
2. This procedure assumes basic familiarity with hand tools and furniture terminology: no specialized training is required
3. All materials removed and disassembled shall be sorted and segregated with like materials and disposed of or recycled according to recycling availability or waste acceptance
4. For items to be recycled, refer to KI's End of Life Recycling Matrix and KI's End of Life Recovery Options Matrix, available at www.ki.com

 All fasteners not explicitly tagged are Material Type A: Steel

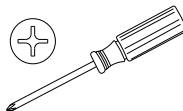
Required Tools



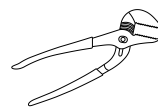
Gloves



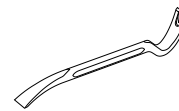
Safety Glasses



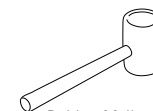
Philips Screwdriver



Channel Lock Pliers



Pry Bar



Rubber Mallet