

Modular Power Systems

Activ8® | PowerUp® | Villa Series™



Furnishing Knowledge®

Modular Power Systems

Modular Power Systems provide a heightened level of productivity and accessibility to KI table solutions. KI offers a spectrum of power systems that address both aesthetic and technical needs.

KI Modular Power Systems support a variety of environments, from training rooms and learning environments to meeting areas and individual workstations.

For those seeking power and data at the worksurface, KI's PowerUp[®] system and Villa Series[™] modules feature innovative press-and-release covers. When multiple worksurfaces require power that is easily reconfigured, Activ8[®] electrical system reduces the number of power sources and discreetly hides power cords.

PowerUp[®] System



PowerUp modules contain two data ports and receptacles to power two devices per module. Each module is housed in a press-and-release cover for easy access. The module plugs directly into a standard outlet. PowerUp can be specified with most KI table solutions and is available in a wide array of KI's standard poly colors. PowerUp can be specified with Activ8 when powering multiple workstations.

Villa Series[™]



Villa is perfect for those seeking a sleek, stylish power solution. Villa Series contains two data ports and receptacles to power two devices per module, while featuring a thinner module profile and metallic paint options. Its components and capabilities are consistent with PowerUp and can be specified with Activ8 when more power is needed.

Activ8[®] Electrical System



Perfect for applications where configurations may frequently change, like classrooms and training environments, Activ8 reduces the number of power sources needed for multiple workstations. Activ8 allows up to eight power modules to be "daisy-chained" on a single power cord. Activ8 provides discreet power within a beam which neatly hides power cords. The infeed and jumpers are all that is needed to power tablets, laptops or other mobile devices. Specify with either PowerUp or Villa Series for power at the worksurface or for undersurface power for use with existing grommets.



Enlite Tables with PowerUp Modules



Seminar Table with PowerUp Module



Genesis Desking with PowerUp Module



DataLink Training Tables with Activ8 PowerUp Modules



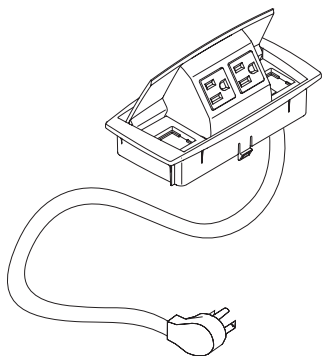
InTandem Training Tables with Activ8 Undersurface Power Modules



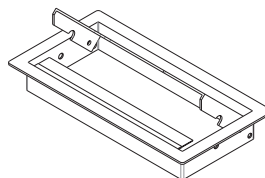
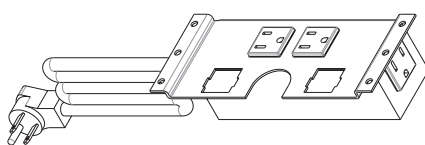
Trek Tables with PowerUp Modules

Statement of Line

Power Modules



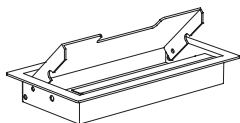
PowerUp® Module



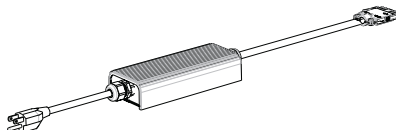
Villa Series™ Module

Activ8® Electrical System

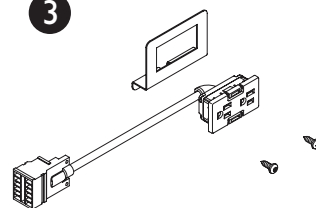
1



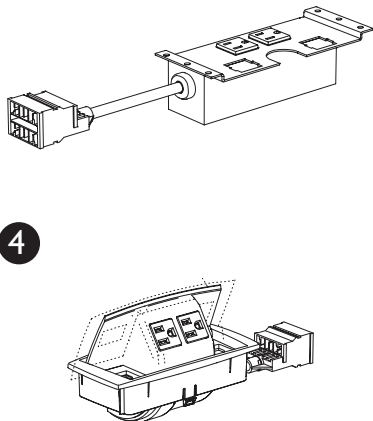
2



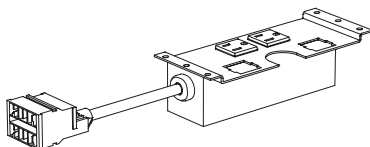
3



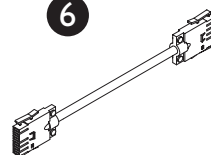
4



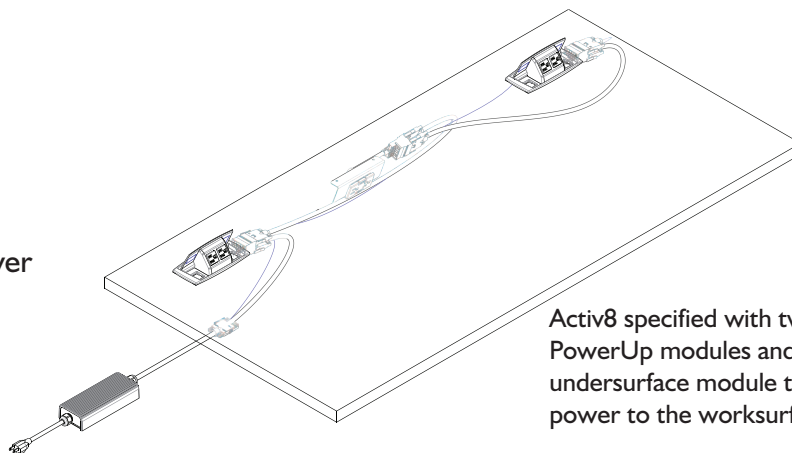
5



6



1. Activ8 Villa Series Module with Cover
2. Activ8 Infeed
3. Activ8 Undersurface Module
4. Activ8 PowerUp Module
5. Activ8 Villa Series Module without cover
6. Activ8 Jumper (29", 53" and 77")



Activ8 specified with two PowerUp modules and one undersurface module to add power to the worksurface.

Learn more about
Modular Power Systems



Printed on FSC® certified paper
using only vegetable-based inks,
including metallics. Please recycle.



KI is a trusted expert for furniture and wall systems around the globe.
USA | CANADA | MEXICO | UK | EUROPE | ASIA | MIDDLE EAST | AUSTRALIA

1330 Bellevue Street • P.O. Box 8100 • Green Bay, WI 54308-8100 • 1-800-424-2432 • www.ki.com

© 2015 Krueger International, Inc. All Rights Reserved. KI-01001R1/HC/IP/0415
KI and Furnishing Knowledge are registered trademarks of Krueger International, Inc.
Villa Series™ is a trademark of ECA.



Furnishing Knowledge®