

Disassembly Instructions



Jury Base Seating

Material Type: A . Steel B. Plastic

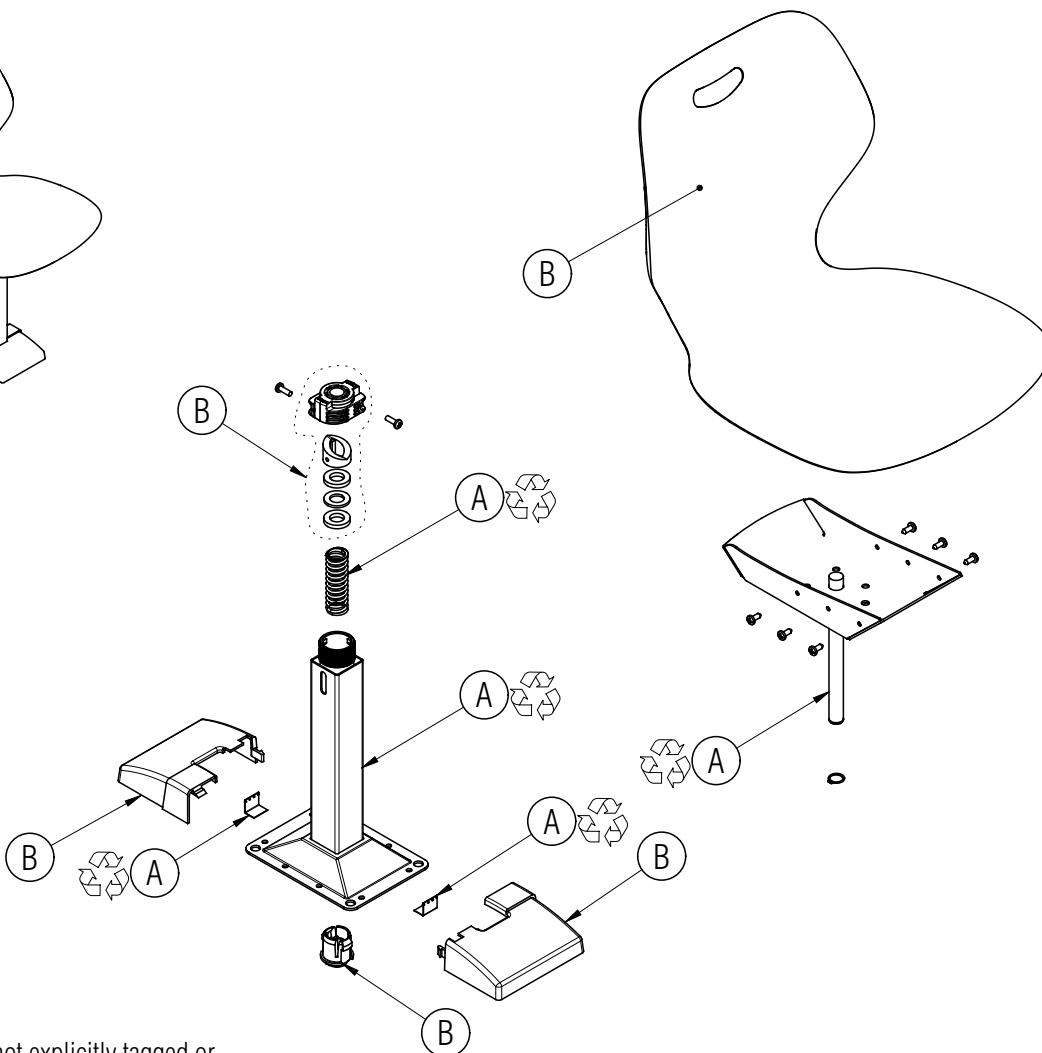
Procedure:

1. Remove the screws holding the chair onto the seat spider plate and remove the chair.
2. Pry off the base covers and remove the nuts holding the chair assembly to the floor. Remove the chair assembly and remove the cover clips from under the flange of the column base.
3. Remove the retaining ring holding the seat spider shaft onto the base and remove the seat spider.
4. Remove the screws holding the upper cam onto the top of the pivot tube and remove the upper cam, lower cam, spacers, bearing and return spring.
5. Drive out the lower pivot bushing.

General Notes:

1. Disassembly time: 10-15 minutes
2. This procedure assumes basic familiarity with hand tools and furniture terminology: no specialized training is required
3. All materials removed and disassembled shall be sorted and segregated with like materials and disposed of or recycled according to recycling availability or waste acceptance
4. For items to be recycled, refer to KI's End of Life Recycling Matrix and KI's End of Life Recovery Options Matrix, available at www.ki.com

All fasteners not explicitly tagged or shown are Material Type A: Steel



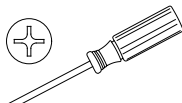
Required Tools



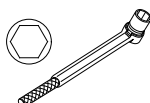
Gloves



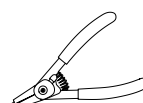
Safety Glasses



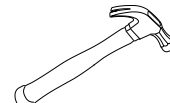
Philips Screwdriver



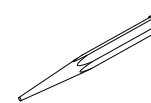
Hex Socket Wrench



Snap Ring Pliers



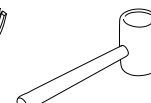
Claw Hammer



Drift Punch



Pry Bar



Rubber Mallet