

Select Step



Select Step Mohawk Group's premier line of performance resilient tile has been selected for maximum performance in demanding environments. Each plank and tile features an M-Force™ Enhanced Urethane finish. Maintenance on Select Step is simple and can be done without the use of acrylic polishes, reducing occupied costs over VCT flooring. The collection includes tile and wood visuals that cover a variety of species and realistic embossed textures.

Collection	Select Step - Wood & Stone
Style Number	C0007
Brand	Mohawk Group - Hard Surface
Product Type	Resilient Tile



DESIGN

Overall Gauge	.118" (3mm)
Wear Layer	20 mil (0.5mm)
Finish	M-Force™ Enhanced Urethane
Colors Available / Size	Each color only available in size shown 8 colors of 6" x 48" (152mm x 1219.2mm) 6 colors of 7.25" x 48" (184.2mm x 1219.2mm) 5 colors of 18" x 36" (457.2mm x 914.4mm) 6 colors of 18" x 18" (457.2mm x 457.2mm)
Packaging	
6" x 48"	36 sf/ctn (3.34 m ² /ctn); 18 pcs/ctn; 42 lbs/ctn (19.05 kg/ctn)
7.25" x 48"	36.25 sf/ctn (3.36 m ² /ctn); 15 pcs/ctn; 42 lbs/ctn (19.05 kg/ctn)
18" x 36"	36 sf/ctn (3.34 m ² /ctn); 8 pcs/ctn; 42 lbs/ctn (19.05 kg/ctn)
18" x 18"	36 sf/ctn (3.34 m ² /ctn); 16 pcs/ctn; 42 lbs/ctn (19.05 kg/ctn)
Installation	Glue Down
Recommended Adhesive	M95.0 Resilient Flooring Adhesive, MS160 Spray, M700 Pressure Sensitive Adhesive
Recommended Underlayment	Mohawk AccuSound™



PERFORMANCE

Construction	Commercial Grade Resilient Tile
Classification	ASTM F1700 - Class III, Type A - Smooth, Type B - Embossed
Squareness	ASTM F2055 - Passes - 0.010 in. max
Size and Tolerance	ASTM F2055 - Passes - ±0.016 in. per linear foot
Thickness	ASTM F386 - Passes - As specified ±0.005 in.
Dimensional Stability	ASTM F2199 - Passes - ≤ 0.020 in. per linear foot
Static Load Limit	ASTM F970 - Passes, modified - 1500 psi
Residual Indentation	ASTM F1914 - Passes - Average less than 8%
Slip Resistance	ASTM D2047 - Passes - > 0.6 Wet, 0.6 Dry
Resistance to Chemicals	ASTM F925 - Passes - No Change
Resistance to Light	ASTM F1515 - Passes - ΔE ≤ 8
Resistance to Heat	ASTM F1514 - Passes - ΔE ≤ 8
Critical Radiant Flux	ASTM E648 - Passes - ≥ 0.45 watts/cm ² , Class 1
Smoke Density	ASTM E662 - Passes - < 450



SUSTAINABILITY

Certification	FloorScore® Certified
---------------	-----------------------



SERVICE

Warranty	Limited 10 Year Commercial
----------	----------------------------

Recommended Applications

Appropriate for light to heavy commercial traffic including applications in the following areas:

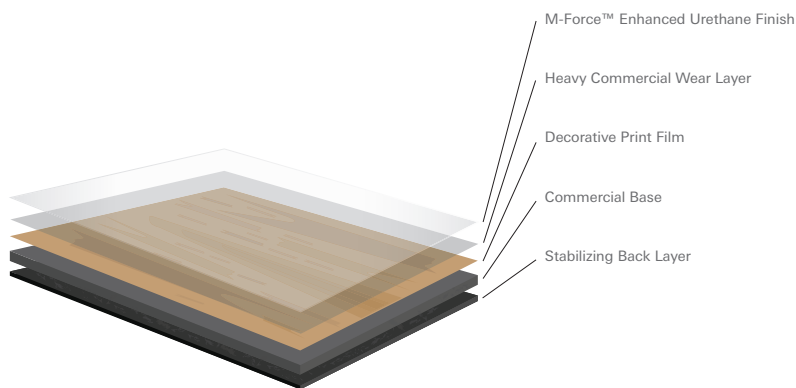
- Retail stores
- Restaurants
- Hospitality – throughout
- Healthcare – non-aseptic areas, medical offices
- Corporate – break rooms, corridors, conference rooms, offices

Selling Features

- M-Force™ Enhanced Urethane finish and 20 mil wear layer protects against commercial traffic
- Wood textures emulate natural materials
- No-polish maintenance reduces occupied costs
- FloorScore® Certified

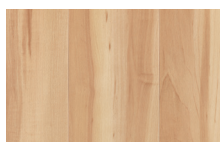
Select Step Wood & Stone

Construction Select Step tiles feature a 20 mil commercial wear layer and are coated with M-Force™ Enhanced Urethane, which is polish-optional for versatile, cost-effective maintenance. The commercial backing layer supports the tile for dimensional stability.

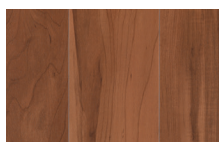


Select Step is a trusted collection of resilient tile, providing a full range of organic-inspired visuals appropriate for commercial environments. Wood options are designed in a wide color palette, offering distressed and rustic styles as well as modern grey tones and linear grain patterns. Porcelain visuals include traditional marbles as well as updated stones in 18" x 36" formats.

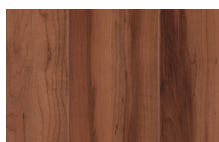
Colorways available in 6" x 48" planks



P012S Natural Wheat



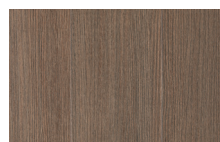
P014S Sorrell



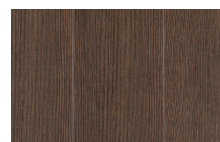
P013S Ginger Snap



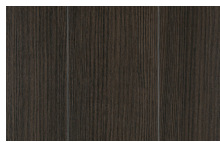
P009S Rawhide Tan



P007S Brown Shutter



P010S Farmhouse Brown

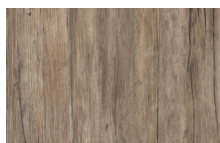


P011S Plantation Brown



P008S Cottage Gray

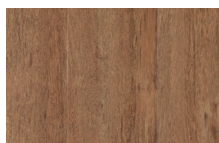
Colorways available in 7.25" x 48" planks



P001S Barnwood Chestnut



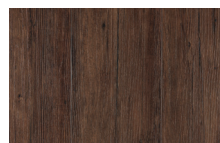
P005S Tanned Tassel



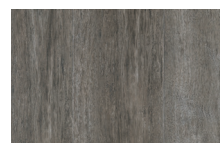
P004S Warm Cider



P003S Tanned Chestnut



P002S Sable Chestnut

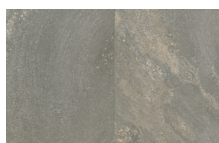


P006S Dovetail Gray

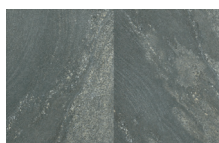
Colorways available in 18" x 36" tiles



T002M Sea Salt



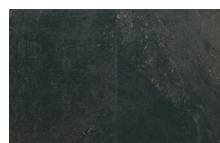
T003M Tea Tin



T005M Earl Gray



T001M Bronze Kona

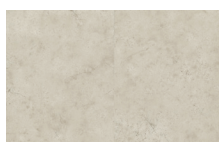


T004M Cast Iron

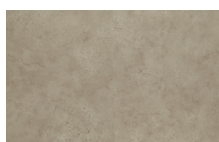
Colorways available in 18" x 18" tiles



T007M Pearl Cloud



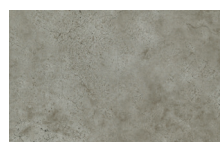
T016M Artisan White



T012M Light Mocha



T010M Imperial Gray



T014M Thai Mountain



T009M Azteca