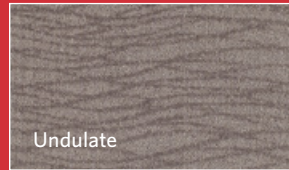


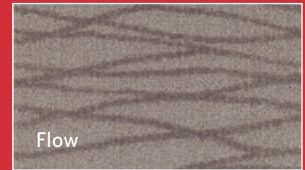
CONSTANTINE®

PEN & INK

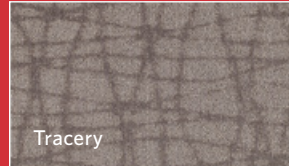
Abbozzi / Continuum / Flow
Tracery / Undulate



Undulate



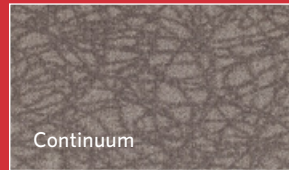
Flow



Tracery



Abbozzi



Continuum



PRICE



PRICE

Milliken™



INSPIRED. INSPIRING.

Pen makes contact. With a continuous movement of hand across the surface, shapes emerge inside the lines. Tight angles morph into undulated forms creating elegant details in this dense, loop and tip-shear construction. With an eye toward the artful, Pen & Ink forms an uninterrupted flow of luxury textures.

Continuum in Nib, broadloom installation



Continuum in Nib, monolithic tile installation



Undulate in Nib, broadloom installation



Flow in Nib, broadloom installation



Undulate in Nib, monolithic tile installation



Flow in Nib, monolithic tile installation

Abbozzi and Tracery in Silverpoint, monolithic tile installation



Tracery in Nib, broadloom installation



Abbozzi in Nib, broadloom installation



Tracery in Nib, monolithic tile installation



Abbozzi in Nib, monolithic tile installation



Flow in Silverpoint, monolithic tile installation



UND121 IRIDIUM
(Abbozzi ABB, Continuum CTM,
Flow FLW, Tracery TRA)



UND47 NIB
(Abbozzi ABB, Continuum CTM,
Flow FLW, Tracery TRA)



UND73 WASH
(Abbozzi ABB, Continuum CTM,
Flow FLW, Tracery TRA)



UND45 KALAMOI
(Abbozzi ABB, Continuum CTM,
Flow FLW, Tracery TRA)



UND44 STYLUS
(Abbozzi ABB, Continuum CTM,
Flow FLW, Tracery TRA)



UND120 SILVERPOINT
(Abbozzi ABB, Continuum CTM,
Flow FLW, Tracery TRA)



UND27 BLOTTER
(Abbozzi ABB, Continuum CTM,
Flow FLW, Tracery TRA)



UND75 VELLUM
(Abbozzi ABB, Continuum CTM,
Flow FLW, Tracery TRA)



UND90 CHAMOIS
(Abbozzi ABB, Continuum CTM,
Flow FLW, Tracery TRA)



UND114 STUDY
(Abbozzi ABB, Continuum CTM,
Flow FLW, Tracery TRA)



UND118 CROW QUILL
(Abbozzi ABB, Continuum CTM,
Flow FLW, Tracery TRA)



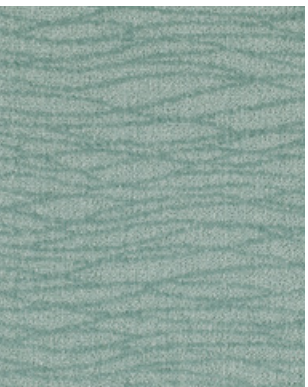
UND87 SKETCH
(Abbozzi ABB, Continuum CTM,
Flow FLW, Tracery TRA)



UND124 SCRIBE
(Abbozzi ABB, Continuum CTM,
Flow FLW, Tracery TRA)



UND60 RASTRUM
(Abbozzi ABB, Continuum CTM,
Flow FLW, Tracery TRA)



UND101 DISEGNO
(Abbozzi ABB, Continuum CTM,
Flow FLW, Tracery TRA)

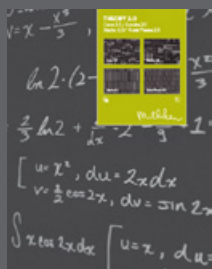


UND89 ALLEGORY
(Abbozzi ABB, Continuum CTM,
Flow FLW, Tracery TRA)

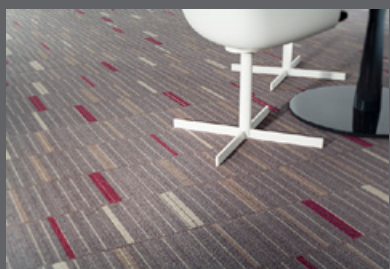
PEN & INK

Abbozzi / Continuum / Flow / Tracery / Undulate

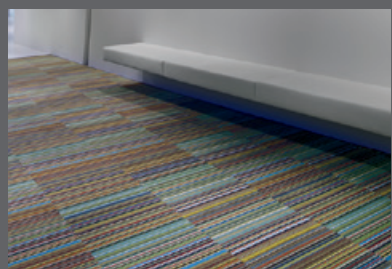
Have you seen our other collections? Visit us online today.



Theory 2.0



Fixate



Construction

Tufted, Loop/Tip-Shear

Tile Size

50 cm x 50 cm (19.7" x 19.7")

Broadloom Width

13' 6" (4.11 m)

Pattern Repeat

Abbozzi, Flow, Tracery, Undulate:

18" x 35.4"

Continuum: 18" x 14.7"

Yarn Type

100% Antron® Legacy Nylon

Type 6,6

Stain Repel / Stain Resist / Soil Release

StainSmart®

Tufted Face Weight

Abbozzi: 42 oz/yd² (1,424 g/m²)

Continuum: 44 oz/yd² (1,492 g/m²)

Flow: 39 oz/yd² (1,322 g/m²)

Tracery: 41 oz/yd² (1,390 g/m²)

Undulate: 39 oz/yd² (1,322 g/m²)

Finished Pile Height

Abbozzi: Tile 0.150" / BL 0.159"

Continuum: Tile 0.151" / BL 0.159"

Flow: Tile 0.141" / BL 0.158"

Tracery: Tile 0.123" / BL 0.154"

Undulate: Tile 0.133" / BL 0.152"

Average Density

Abbozzi: Tile 9,216 / BL 8,513

Continuum: Tile 9,083 / BL 8,898

Flow: Tile 9,447 / BL 8,225

Tracery: Tile 10,215 / BL 8,602

Undulate: Tile 9,798 / BL 8,600

Standard Backing

Tile: PVC-Free Comfort Plus® ES

Cushion

Comfort Plus® is available with TractionBack®

Broadloom: Endura-Loc™ High Performance Backing with Woven Latex Secondary

Texture Appearance Retention Rating (TARR)

Heavy

Recommended Installation Methods



MONOLITHIC



BROADLOOM

TractionBack®

Simplify your modular installation with Milliken's patented TractionBack®, an innovative backing system that is faster, more cost efficient, and environmentally superior to wet adhesives and peel-and-stick carpet tile.



antron. *a*



Growing greener for over 100 years.

Visit milliken.com for more information.

This cushion-back carpet tile product is covered by one or more patents, published applications and/or patents pending. Specifications are subject to normal manufacturing tolerances and may be changed without prior notice.