

## DESCRIPTION

The 2HBHT Series is designed for use in high mounting height applications where periodic cleaning with high pressure is required. This pendant mounted luminaire with optional stem mount available, has a hole-free design and is enclosed and gasketed to protect against infiltration of particles and airborne bacteria. The sealed housing and door frame allow relamping without contamination of the clean areas. These luminaires are U.L. listed and C.S.A. certified for wet locations and are manufactured in accordance with U.S.D.A., F.D.A., N.S.F and Federal Standard 209E. **800 PSI hosedown rating is standard.**

<b>Catalog #</b>		<b>Type</b>
<b>Project</b>		
<b>Comments</b>		<b>Date</b>
<b>Prepared by</b>		

## SPECIFICATION FEATURES

### A...Lens

One-piece, clear extruded lens with choice of prismatic or clear acrylic. Optional glass shielding available.

### B...Fasteners

Flush mounted, stainless steel machine screws secure through captive cage nuts in housing. Screw locations are evenly spaced to compress gasketing on all sides.

### C...Housing

Die-formed, CRS housing with seam welded and sealed end caps. Tented top to facilitate water run-off. Contains no exposed holes that would allow air or moisture passage. Standard white high reflectance polyester powder coat finish. Gloss: 85%; Reflectance: 93%; Hardness: 2H; Salt Spray: 500 Hours. Optional brushed stainless steel finish for corrosive chemical environments.

### D...Optics

Die formed reflectors are faceted for 4 and 6 lamp configurations with two optical distributions – medium and wide. Medium beam optics utilizes 95% specular substrate while the wide distribution utilizes a high performance 95% reflective polyester powder coated finish.

### E...Lens Retention & Gasket

Unique, Particlock™ lens retention system utilizes continuous, 18 ga. clampdowns to sandwich gasketing between lens, and door frame. Closed cell, one piece gasketing surrounds perimeter of lens and door for an even environmental seal to the housing.

### F...Door/Shielding

(Must be specified.) One-piece, 18 ga., fully gasketed, outside door with die-formed and beveled edges eliminates seams which could entrap microscopic contaminants. Two braided, stainless steel cables on one side of door provide hinging.

### G...Ballast

Standard, Class P, CBM/ETL ballast.

### H...Mounting

Standard pendant mount via chain or cable. Fixture comes with standard grommated cord or cord & plug. Mounting hardware ordered separately.

### I...Stem Mount

Optional 3/4" stem mount available on housing using integrated hub (stems are not provided).

### Labels

U.L./cUL certified.



## F-BAY 2HBHT SERIES

2' x 4' Hosedown  
Fluorescent High-Bay  
4 or 6 Lamp

FLUORESCENT PENDANT  
ONE-PIECE DOOR  
T5 LAMP TECHNOLOGY  
T8 LAMP TECHNOLOGY



## ENERGY DATA

Input Watts:

**EB Ballasts**

432 = 109W

632 = 167W

**EB/Plus Ballasts**

432 = 147W

632 = 221W

**ER Ballasts**

432 = 112W

454 = 229W

632 = 169W

654 = 346W

**ER/Plus Ballasts**

432 = 144W

632 = 218W

\* Reference the lamp/ballast data in the Technical Section for specific lamp/ballast requirements

\*\* Consult Pre Sales Technical Support.

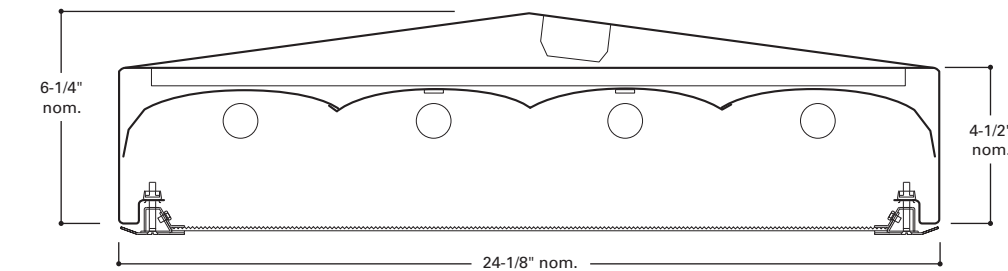
LAMPS CONTAIN MERCURY. DISPOSE ACCORDING TO LOCAL, STATE OR FEDERAL LAWS

**LINEAR DISCONNECT**

Safe and convenient means of disconnecting power.

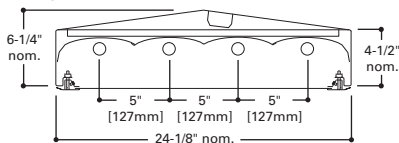


ADC080248

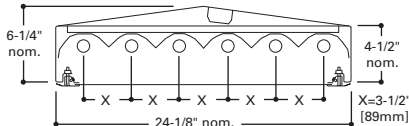


## LAMP CONFIGURATIONS

### 4-lamp

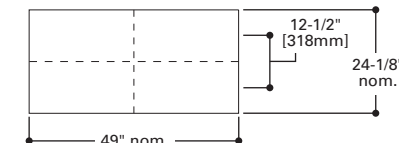


### 6-lamp

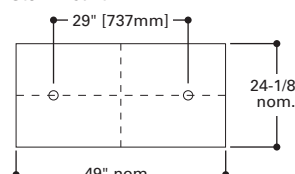


## MOUNTING DIMENSIONS

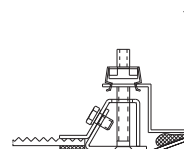
### Chain/Cable Mount



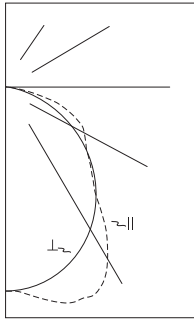
### Stem Mount



## DOOR FRAME

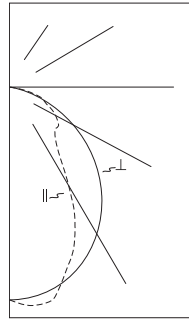


PHOTOMETRICS



**2HBHT-632-CL**  
 (2) Electronic Ballasts  
 (6) F32T8/TL835 lamps  
 3000 lumens  
 Spacing criterion:  
 (II) 1.2 x mounting height, (⊥) 1.2 x mounting height  
 Efficiency 68.1%  
 Test Report:  
 2HBHT632CL.IES  
 LER =75  
 Yearly Cost of 1000 lumens, 3000 hrs at .08 KWH = \$3.22

Angle	Along II	45°	Across ⊥
0	4538	4538	4538
5	4601	4543	4510
10	4787	4628	4442
15	4969	4705	4319
20	4999	4740	4160
25	4938	4685	3958
30	4514	4559	3711
35	3882	4262	3434
40	3100	3739	3121
45	2696	3118	2782
50	2392	2414	2420
55	2169	1992	2035
60	2008	1643	1638
65	1762	1377	1235
70	1400	1131	843
75	875	772	485
80	355	360	211
85	77	76	48
90	0	0	0



**2HBHT-654T5-CL**  
 (3) Electronic Ballasts  
 (6) F54T5/841HO 54W lamps  
 4400 lumens  
 Spacing criterion:  
 (II) 1.0 x mounting height, (⊥) 1.2 x mounting height  
 Efficiency 52.9%  
 Test Report:  
 2HBHT654T5CL.IES  
 LER =40  
 Yearly Cost of 1000 lumens, 3000 hrs at .08 KWH = \$6.03

Angle	Along II	45°	Across ⊥
0	8058	8058	8058
5	8298	8229	8014
10	8281	8222	7894
15	7647	8038	7681
20	6853	7410	7382
25	5872	6624	7000
30	4611	5872	6542
35	3428	4902	6018
40	2751	3736	5440
45	2431	2770	4810
50	2365	2164	4141
55	2227	1806	3435
60	1957	1671	2715
65	1577	1388	1998
70	1358	1043	1309
75	918	734	707
80	416	394	270
85	87	84	48
90	0	0	0

Coefficients of Utilization

rc rw RCR	Effective floor cavity reflectance																
	80%			70%			50%			30%			10%			0%	
	70	50	30	70	50	30	70	50	30	70	50	30	70	50	30	0	
0	81	81	81	79	79	79	79	76	76	76	72	72	72	69	69	69	68
1	75	72	69	66	73	70	68	65	67	65	63	65	63	61	62	61	58
2	68	63	58	55	66	62	58	54	59	56	53	57	54	52	55	53	49
3	62	56	50	46	61	54	50	46	52	48	45	51	47	44	49	46	43
4	57	49	44	39	56	49	43	39	47	42	38	45	41	38	44	40	37
5	53	44	38	34	51	44	38	34	42	37	34	41	37	33	40	36	33
6	49	40	34	30	48	39	34	30	38	33	30	37	33	29	36	32	29
7	45	36	31	27	44	36	30	26	35	30	26	34	29	26	33	29	25
8	42	33	28	24	41	33	27	24	32	27	24	31	27	23	30	26	23
9	40	31	25	21	39	30	25	21	29	25	21	29	24	21	28	24	21
10	37	28	23	19	36	28	23	19	27	23	19	27	22	19	26	22	18

Coefficients of Utilization

rc rw RCR	Effective floor cavity reflectance																
	80%			70%			50%			30%			10%			0%	
	70	50	30	70	50	30	70	50	30	70	50	30	70	50	30	0	
0	70	70	70	69	69	69	69	66	66	66	63	63	63	60	60	60	59
1	65	63	61	59	64	61	59	58	59	57	56	57	55	54	55	54	51
2	60	56	52	49	59	55	51	49	53	50	47	51	48	46	49	47	45
3	55	50	45	42	54	49	45	42	47	44	41	46	43	40	44	42	40
4	51	45	40	36	50	44	40	36	42	39	36	41	38	35	40	37	35
5	47	40	36	32	46	40	35	32	39	35	31	37	34	31	36	33	31
6	44	37	32	28	43	36	32	28	35	31	28	34	31	28	33	30	28
7	41	34	29	26	40	33	29	25	32	28	25	32	28	25	31	27	25
8	38	31	26	23	38	31	26	23	30	26	23	29	26	23	29	25	23
9	36	29	24	21	35	28	24	21	28	24	21	27	23	21	27	23	21
10	34	27	22	19	33	26	22	19	26	22	19	25	22	19	25	21	18

Zonal Lumen Summary

Zone	Lumens	%Lamp	%Fixture
0-30	3768	20.9	30.7
0-40	6124	34.0	50.0
0-60	10121	56.2	82.6
0-90	12258	68.1	91.5
0-180	12258	68.1	100.0

Typical VCP Percentages

Room Size (Ft.)	Height Along		Height Across	
	8.5'	10.0'	8.5'	10.0'
20 x 20	35	43	41	46
30 x 30	33	34	39	40
30 x 60	35	33	40	39
60 x 30	39	39	43	42
60 x 60	40	36	43	40

Zonal Lumen Summary

Zone	Lumens	%Lamp	%Fixture
0-30	5876	22.3	37.6
0-40	8802	33.3	56.3
0-60	13385	50.7	85.7
0-90	15627	59.2	75.3
0-180	15627	59.2	100.0

Typical VCP Percentages

Room Size (Ft.)	Height Along		Height Across	
	8.5'	10.0'	8.5'	10.0'
20 x 20	37	44	39	42
30 x 30	34	35	37	37
30 x 60	35	33	39	37
60 x 30	40	39	42	40
60 x 60	40	36	42	39

ORDERING INFORMATION

SAMPLE NUMBER: 2HBHT-654T5-A-UNV-EBT2-U

<p><b>Width</b> 2=24"</p> <p><b>Series</b> HBHT=High Bay Hose Down w/Tented Top</p> <p><b>No. of Lamps</b> 4=4 Lamps 6=6 Lamps</p> <p><b>Lamp Type</b> 28T5=28W T5 Lamps (48") 32=32W T8 Lamps (48") 49T5=49W T5HO Lamps (48") 51T5=51W T5HO Lamps (48") 54T5=54W T5HO Lamps (48")</p> <p><b>Distribution</b> Blank=Medium (Specular Aluminum) G=Wide (High Reflectance White)</p>	<p><b>Shielding</b> A=Prismatic Acrylic Lens &amp; Steel Door Frame CL=Clear Acrylic Lens &amp; Steel Door Frame 93=Prismatic Tempered Glass &amp; Steel Door Frame 94=Clear Tempered Glass &amp; Steel Door Frame</p> <p><b>Voltage<sup>(1)</sup></b> UNV=Universal 120/277 Voltage UNC=Universal 347/480 Voltage<sup>(2)</sup> 120V=120 Volt 277V=277 Volt 347V=347 Volt</p> <p><b>Options</b> <b>Lamps Installed</b> L8830=T8 Lamp, 85CRI 3000K L8835=T8 Lamp, 85CRI 3500K L8841=T8 Lamp, 85CRI 4100K L8850=T8 Lamp, 85CRI 5000K L5830=T5 Lamp, 85CRI 3000K L5835=T5 Lamp, 85CRI 3500K L5841=T5 Lamp, 85CRI 4100K L5850=T5 Lamp, 85CRI 5000K HL=Add HL at end of lamp for high lumen lamps, T8 only GL=Single Element Fuse GM=Double Element Fuse EL=Emergency Installed<sup>(1)</sup></p>	<p><b>Ballast Type<sup>(1)</sup></b> <b>T8 Systems</b> EB8 =T8 Electronic Instant Start. Total Harmonic Distortion &lt; 10% No. of Ballast 1 or 2 EB8 /PLUS=T8 Electronic Instant Start.<sup>(2)</sup> High Ballast Factor &gt;1.15. Total Harmonic Distortion &lt; 10% No. of Ballast 1 or 2 ER8 =T8 Electronic Program Rapid Start. Total Harmonic Distortion &lt; 10% No. of Ballast 1 or 2 ER8 /PLUS=T8 Electronic Program Start. High Ballast Factor &gt;1.15. Total Harmonic Distortion &lt; 10% No. of Ballast 1, 2 or 3</p> <p><b>T5 Systems</b> EHT =T5 Linear Electronic Start High Ambient.<sup>(2)</sup> Total Harmonic Distortion &lt; 10% No. of Ballast 1, 2 or 3</p>	<p><b>Options</b> PM=Pendant Mount Stem<sup>(4)</sup> C3=3' Power Cord<sup>(5)</sup> C6=6' Power Cord<sup>(5)</sup> PC3=3' Power Cord &amp; Plug (Specify Voltage)<sup>(1) (4)(5)</sup> PC6=6' Power Cord &amp; Plug (Specify Voltage)<sup>(1) (5)</sup> SSN=Brushed Stainless Steel Door Finish SHN=Brushed Stainless Steel Housing Finish</p> <p><b>Accessories</b> (order separately) Y-Hook=(2) Snap Hooks, #2 Cable (Specify 10' or 30'), order 2 per fixture HBHT-Chain/Set=(2) 6ft. Stainless Steel Chains, (4) large S-Hooks</p>	<p><b>Packaging</b> U=Unit Pack PAL=Pallet Pack PALC=Job Pack In Carton</p>
--	---	--	--	---

SHIPPING INFORMATION

Catalog No.	Wt.
2HBHT-654T5	50 lbs.
2HBHT-454T5	48 lbs.

NOTES: <sup>(1)</sup>Voltage must be specified when ordered with plugs, motion sensors or emergency ballasts. <sup>(2)</sup>2 lamp ballast configurations only for T5 UNC versions. <sup>(3)</sup>3 lamp ballast configurations in EB8/PLUS only for T8 UNC versions. <sup>(4)</sup>3/4" stem only, supplied by others. Power supply fed through stem during installation. <sup>(5)</sup>Always supplied with a 6 ft. 3-wire cord as standard through pendant stem hub. <sup>(6)</sup>Available for chain or cable mount options only.