

DESCRIPTION

6 inch LED recessed sealed downlight specially designed for LED technology. Two-stage reflector system produces smooth distribution with excellent light control and low aperture brightness. Lumen packages include 1000, 1500, 2000 and 3000 delivered lumens with color temperatures of 2700K, 3000K, 3500K and 4000K. Bottom trim ring accepts smooth or prismatic acrylic or glass, and fastens to the housing using (4) flush, countersunk stainless-steel screws. IP66 standard. NSF rated.

SPECIFICATION FEATURES

Lower Shielding Reflector

0.050" thick aluminum lower reflector in combination with a lensed upper optical chamber.

Bottom Trim Ring

Steel trim ring, powder coat painted anti-microbial white, retained with (4) flush countersunk, stainless-steel screws. Gasketing seals lens to trim ring, trim ring to ceiling. Stainless steel ring available.

Plaster Frame Collar

Die-cast aluminum 1-1/2" deep collar accommodates ceiling materials up to 2".

Universal Mounting Bracket

Accepts 1/2" EMT, C channel and bar hangers and adjusts 5" vertically from above and below the ceiling.

Thermal

Extruded aluminum heat sink conducts heat away from the LED module.

LED (Light-Emitting Diode)

LED system contains high brightness white LEDs combined with a high reflectance upper reflector and convex transitional lens producing even distribution with no pixilation. Rated for 50,000 hours at 70% lumen maintenance. Auto resetting, thermally protected, LEDs are turned off when safe operating temperatures are exceeded. Flexible disconnect allows for tool-less replacement of LED engine from below ceiling.

Junction Box

(4) 1/2" and (2) 3/4" trade size pry-outs positioned to allow straight conduit runs. Listed for (8) #12 AWG (four in, four out) 90°C conductors and feed thru branch wiring.

Driver

Driver can be serviced from above or through the aperture.

Environmental

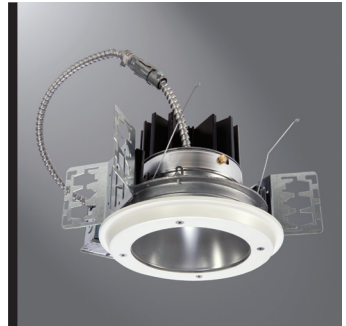
Fixture not to be operated in ambient temperatures above 40° C.

Code Compliance

Thermally protected and CSA listed for protected wet locations. IP66 standard from below the ceiling. Optional City of Chicago environmental air (CCEA) marking for plenum applications. EMI/RFI emissions per FCC 47CFR Part 18 Class B consumer limits. Non-IC rated - Insulation must be kept 3" from top and sides of housing. RoHS Compliant. Title 24 2008 Compliant with designated trims. Photometric testing completed in accordance with IES LM 79 standards. LED life testing completed in accordance with LM 80 standards. NSF rated. IP66 rated.

Warranty

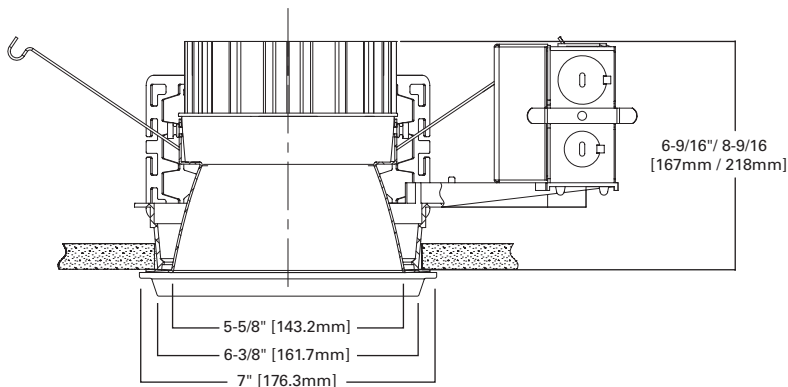
5-year warranty.



FFLD6A FV/S6LM0 FSBT6

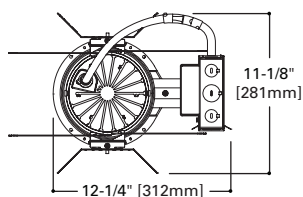
6" Sealed/Medical LED
Downlight
Flush Lens

1,000, 1,500, 2,000 or 3,000 Lumens

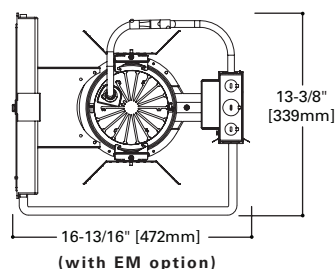


LUMENS	HEIGHT
1000	6-9/16"
1500	6-9/16"
2000	8-9/16"
3000	8-9/16"

TOP VIEW



TOP VIEW WITH BATTERY



ENERGY DATA

Delivered Lumens	Input Watts
1000	14.7
1500	22.6
2000	33.6
3000	46

ORDERING INFORMATION

Example:

Line Item #1: Housing: **FFLD6A15D010TE** = 6" LED Plaster Frame, 1500 Lumen, 0-10V DimmingLine Item #2: Power Module: **FERM6A10835** = 6" Power Module, 85 CRI, 3500K Color TemperatureLine Item #3: Reflector: **FV/S6LM0LI** = 6" Sealed Reflector, Specular ClearLine Item #4: Bottom Trim: **FSBT694** = 6" Sealed Bottom Trim, 0.187" Smooth, Clear Tempered Glass

Housing	Delivered Lumens ¹	Driver	Options	Power Module	Lumens	CRI	Color Temp	Reflector	Finish	Bottom Trim	Lens	Accessories
FFLD6A = 6" aperture FFLD6ACP = 6" aperture, Chicago plenum ⁴				FERM6A					LI	FSBT6		
10 = 1000 lumens 15 = 1500 lumens 20 = 2000 lumens 30 = 3000 lumens				FERM6A = 6" module 10 = 1000 15 = 1500 20 = 2000 30 = 3000				FV/S6LM0 = 6" Reflector FV/S6LM0E = 6" Reflector for use with IEM Integral Emergency Option LI = Specular Clear W = Gloss White				
D010TE = 120-277V, 0-10V 10% dimming or trailing edge 120V dimming D5LT = Fifth Light DALI dimming DL3 = 1% - 100% dimming, 120-277V Lutron Hi-lume Ecosystem or 3-wire DLT = 1% - 100% dimming, 120V Lutron Hi-lume forward phase dimming DMX = DMX dimming DE010 = 1 to 100% Dimming 120-277V, 50/60Hz 0-10V				8 = 80 9 = 90 27 = 2700K 30 = 3000K 35 = 3500K 40 = 4000K 27CP = 2700K, Chicago Plenum 30CP = 3000K, Chicago Plenum 35CP = 3500K, Chicago Plenum 40CP = 4000K, Chicago Plenum				FSBT6 = Sealed Bottom Trim, Powder Coat Painted Matte White, Anti-microbial FSBT6SS = Sealed Bottom Trim, Stainless Steel, Powder Coat Painted Matte White FSBT6NAT = Sealed Bottom Trim, Aluminum, Matte White Natatorium Finish, Stainless Steel Hardware 94 = 0.187" Smooth Clear Tempered Glass 89BV = 0.125" Smooth Clear Acrylic 89BI = 0.125" Clear Acrylic with RFI Grid				
IEMBOD = Emergency module, internal ^{2,3}												HB26 = C Channel Bar Hanger, 26" Long, Pair HB50 = C Channel Bar Hanger, 50" Long, Pair RMB = Wood Joist Bar Hanger, 22" Long, Pair

Notes:

¹ Nominal delivered Lumens will vary depending on selected CCT, driver and reflector finish.² Not available in Chicago Plenum.³ Not CSA approved.⁴ Not available with emergency battery pack.

PHOTOMETRICS

See website for photometrics / IES file.