

## DESCRIPTION

The Fail-Safe FSR combines maximum security construction features with energy saving technology. This recessed luminaire utilizes a one-piece overlapping door frame, security lensing and tamper-resistant fasteners to maximize impact-resistance and prevent contraband concealment and unauthorized fixture penetration. UL/cUL listed for damp location. The FSR is ideal for confinement/security applications. Suitable for use in inmate cells, psychiatric wards, secure corridors and general population areas.

Catalog #		Type
Project		
Comments		Date
Prepared by		

## SPECIFICATION FEATURES

### Fasteners

Stainless steel tamper-resistant T20 TORX® screws standard. Allen-head screws with center reject pin optional (SF3).

### Housing

Die-formed CRS body with welded corners to form a one-piece housing which prevents contraband concealment and unauthorized fixture penetration.

### Finish

High gloss, electrostatically applied, white powder coat finish, average minimum reflectance 92%.

### Door

One-piece, CRS door frame (12, 14, 16, or 18 ga.) with die-formed edges and tightly closed corners increases rigidity. Aircraft cable secures door to housing.

### Light Mask

Gasketing surrounds door frame and prevents light leaks.

### Lens

Choice of prismatic acrylic, prismatic polycarbonate or prismatic tempered glass on fixture side, clear polycarbonate or clear tempered glass on environmental side.

### Lamps

By others.

### Lens Retention

Lens secured by thru-studs and vertically adjustable internal CRS hold-downs.

### Ballast

Electronic Class P, CBM/ETL ballast.

### Labels

UL/cUL listed for damp locations. Wet location under covered ceiling optional.



## FSR12

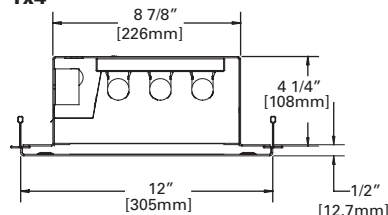
1x1  
1x2  
1x4  
Biaxial  
T5  
T8  
Quad  
TT

Fluorescent  
Confinement/Correctional

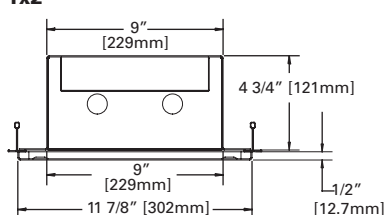
RECESSED

## CROSS-SECTION DIMENSIONS

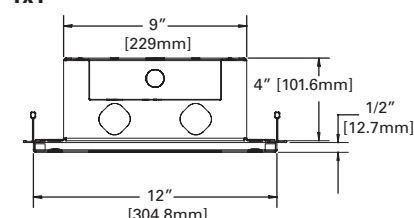
### 1x4



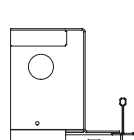
### 1x2



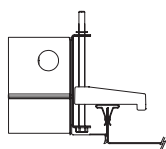
### 1x1



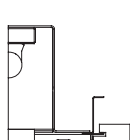
## CEILING COMPATIBILITY



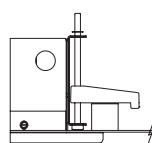
T-Grid (TG)



Metal Pan (MP)



Concealed Z-Spine (CZ)



Security Ceiling (SC)

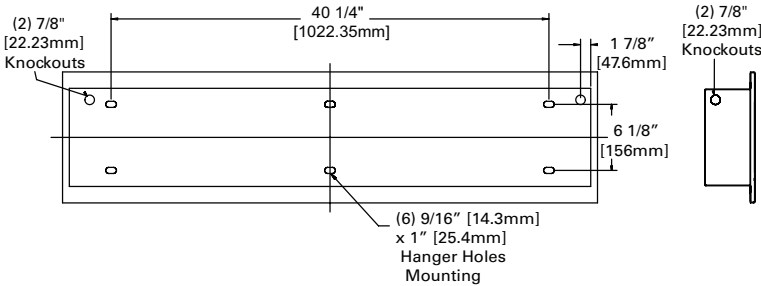
### Electronic Ballast Data

Consult Cooper Lighting Representative

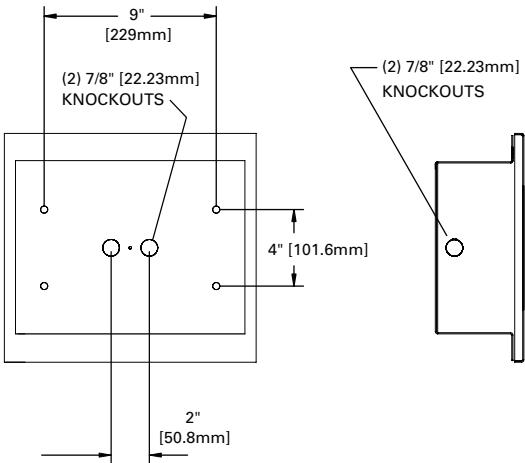
TORX® is a registered trademark of Camcar Division of Textron Inc.

TYPICAL MOUNTING DETAIL

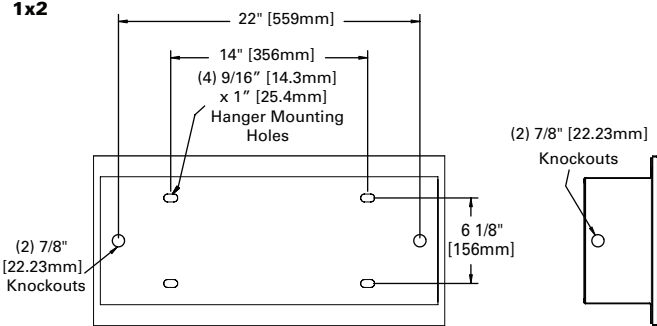
1x4



1x1



1x2



ORDERING INFORMATION

SAMPLE NUMBER: FSR-TG-D12-332-UNV-80/86-EB81-GLR

Product Family	Door	Fixture Width	Lamp Type	Voltage	Lens Type	Ballast	Options	Accessories
<b>FSR</b>		<b>12</b>			<b>/</b>			
FSR = Maximum Security Recessed Luminaire	S=12 ga. (Ultimax) X=14 ga. (Maximum) D=16 ga. (Medium) N=18 ga. (Minimum)	12=12" Wide	120=120V 277=277V UNV=120V- 277V 347=347V		Inner Layer <sup>4</sup> (Optional) 90=0.005 UV Absorbing Overlay	Electronic Ballast <sup>2</sup> EBT1=(1) Ballast for use with Compact Lamp EBT2=(2) Ballasts for use with Compact Lamp EB51=(1) Ballast for use with T5 Lamp EB52=(2) Ballasts for use with T5 Lamp EB81=(1) Ballast for use with T8 Lamp EB82=(2) Ballasts for use with T8 Lamp EBX1=(1) Ballast for use with Biaxial Lamp EBX2=(2) Ballasts for use with Biaxial Lamp		9306 =Allen-Head Wrench VRSD=T20 Center Pin Tamperproof TORX ® - head screwdriver
TG=T-Grid <sup>6</sup> MP=Metal Pan <sup>1, 5</sup> CZ=Concealed Z-Spline <sup>6</sup> SC=Security Ceiling <sup>10, 11, 13, 14</sup>			Fixture Side 80=0.125 Prismatic Acrylic 81=0.156 Prismatic Polycarbonate 82=0.187 Prismatic Polycarbonate 93=0.156 Prismatic Tempered Glass /		Environmental Side <sup>4</sup> 84=0.125 Clear Polycarbonate 85=0.187 Clear Polycarbonate 86=0.250 Clear Polycarbonate 87=0.375 Clear Polycarbonate 88=0.500 Clear Polycarbonate 94=0.187 Clear Tempered Glass 96=0.250 Clear Tempered Glass 97=0.375 Clear Tempered Glass 98=0.500 Clear Tempered Glass	EL4=EM Pack, T8, BX EL5=EM Pack, T5, T5HO FNL=Fluorescent Night Light, 5, 7, 9 Watt FNL13=Fluorescent Night Light, 13 Watt LNL=LED Night Light GLR=Fuse and Holder CPHF=Concealed piano hinge, full length 14G=14-Gauge Housing RGT=Removable Gear Tray WL= Wet Location		
1' Nom. Length Compact Fluorescent <sup>12</sup> 113=(1) 13W Lamps 126=(1) 26W Lamps 213=(2) 13W Lamps 226=(2) 26W Lamps 313=(3) 13W Lamps <sup>9</sup> 2' Nom. Length T5 Fluorescent 114=(1) 14W Lamps 124=(1) 24W Lamps 214=(2) 14W Lamps 224=(2) 24W Lamps 314=(3) 14W Lamps <sup>3</sup> 324=(3) 24W Lamps <sup>3</sup> T8 Fluorescent 117=(1) 17W Lamps 217=(2) 17W Lamps 317=(3) 17W Lamps Biaxial Fluorescent 140BX=(1) 40W Lamps 240BX=(2) 40W Lamps	4' Nom. Length T5 Fluorescent 128=(1) 28W Lamps 154=(1) 54W Lamps 228=(2) 28W Lamps 254=(2) 54W Lamps 328=(3) 28W Lamps <sup>7</sup> 354=(3) 54W Lamps <sup>8</sup> T8 Fluorescent 132 =(1) 32W Lamps 232 =(2) 32W Lamps 332 =(3) 32W Lamps							
<p><b>Notes:</b></p> <p>1 For metal pan ceilings, ceiling system specifications are required to ensure compatibility. Signed submittal drawings may be required.</p> <p>2 For specific electronic ballast, specify brand and catalog number.</p> <p>3 EBP not available due to space restrictions.</p> <p>4 See Lens Ordering Guide for other available lens choices.</p> <p>5 MP ships with swing-out brackets standard. For yoke mounting frame, specify YMF.</p> <p>6 TG and CZ ship without swing-out brackets or yoke mounting frames. Please specify SWBR or YMF if required.</p> <p>7 Not available with EBP.</p> <p>8 EBP available with single 3-lamp ballast.</p> <p>9 Not available with FNL.</p> <p>10 SC ships with Swing-out brackets standard. For yoke mounting frames, specify YMF.</p> <p>11 SC designed for security ceiling systems that consist of metal "panels", either solid or perforated. A hole is cut in the "panel" and the fixture is places above. Door frame protrudes below ceiling line, and fully conceals the fixture/housing.</p> <p>12 Compact fluorescent - "twin-tube" lamps only.</p> <p>13 Ceiling cut-out dimensions; 1x1: 11-1/8" x 12-1/4", 1x2: 11-1/8" x 24-1/4", 1x4: 11-1/8" x 48-1/4"</p> <p>14 Fixture ships with (4) swing-out brackets standard.</p>								